

# LUVERNE, MINNESOTA WELCOMES YOU



Parade

10 a.m.

Main Street

**\$2.00**

Field

1 p.m.

LHS Athletic Field



# *Welcome...*

On behalf of the Luverne Area Chamber of Commerce we welcome you to Luverne and the 54th Annual Tri-State Bank Festival. We are proud of the past heritage of this festival and thank you for being part of this tradition. Over the years the festival has developed into one of the premier high school marching events in the Midwest. The original founders would be proud of the development of this event which still has its primary objective, the education of student musicians, supporters and fans.

To the student musicians, we thank you for your dedication to the marching band. Your communities, parents, and supporters are proud of you. We wish you the best during the day and hope you come away with fond memories of Tri-State. Remember, there are no losers at Tri-State. We know everyone will do their best and that is all anyone asks. You are all winners with us.

To the supporters and fans of the marching bands, we know you will have a great time in Luverne and hope you have the opportunity to visit our Luverne businesses. We look forward to serving you today and in the future. We invite you back to Luverne and look forward to seeing you throughout the year.

*Dave Smith*  
*Executive Director*  
*Luverne Area Chamber of Commerce*







# 54th Annual Tri-State Band Festival

September 25, 2004  
Luverne, Minnesota

## PARADE

Luverne Main Street  
Begins at 10 a.m.

## FIELD

Luverne High School Athletic Field  
Begins at 11 a.m.

Listed in Top 25 Festivals & Events  
in Minnesota!

A production of Tollefson Publishing  
Luverne, Minnesota



# Finals Score Sheet

## CLASS A-1

### Parade

1st Place \_\_\_\_\_

2nd Place \_\_\_\_\_

3rd Place \_\_\_\_\_

4th Place \_\_\_\_\_

## CLASS A

### Parade

1st Place \_\_\_\_\_

2nd Place \_\_\_\_\_

3rd Place \_\_\_\_\_

### Field

1st Place \_\_\_\_\_

2nd Place \_\_\_\_\_

3rd Place \_\_\_\_\_

## CLASS AA

### Parade

1st Place \_\_\_\_\_

2nd Place \_\_\_\_\_

3rd Place \_\_\_\_\_

### Field

1st Place \_\_\_\_\_

2nd Place \_\_\_\_\_

3rd Place \_\_\_\_\_

## CLASS AAA

### Parade

1st Place \_\_\_\_\_

2nd Place \_\_\_\_\_

3rd Place \_\_\_\_\_

### Field

1st Place \_\_\_\_\_

2nd Place \_\_\_\_\_

3rd Place \_\_\_\_\_

4th Place \_\_\_\_\_

## CLASS AAAA

### Parade

1st Place \_\_\_\_\_

2nd Place \_\_\_\_\_

3rd Place \_\_\_\_\_

### Field

1st Place \_\_\_\_\_

2nd Place \_\_\_\_\_

3rd Place \_\_\_\_\_

4th Place \_\_\_\_\_

## SWEEPSTAKES TROPHIES

### Parade

Field \_\_\_\_\_

Overall \_\_\_\_\_

## K.M. GETMAN AWARD

## AUXILIARY AWARDS

### Outstanding

Drum Major \_\_\_\_\_

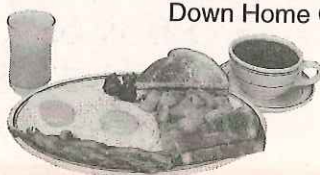
Auxiliary \_\_\_\_\_

Drum Line \_\_\_\_\_

Horn Line \_\_\_\_\_

## Welcome to the Tri-State Band Festival

- BREAKFAST SERVED ALL DAY  
Best pancakes in town.
- GOLDEN COLLECTION  
Guests 60 and over, lighter portions, lighter prices.
- FABULOUS DESSERTS
- TO-GO ORDERS



Where friends meet to eat!  
Down Home Country Hospitality

*Ready for a  
real meal?*



IT'S A COUNTRY KITCHEN KIND OF D.  
Open 7 days a week  
S. Hwy. 75 • Luverne, MN  
507-283-4458



# 2004-2005 Calendar of Upcoming Events

Green Earth Players "Nuncrackers" .....	November 12-14 & 19-21
Holiday Open House.....	November 18, 19, 20
8th Annual Winterfest.....	December 3, 4, 5
Christmas at the Palace.....	December 10
Music Boosters Carnival.....	January 22
Blue Mound Figure Skaters Show.....	March 12
Green Earth Players "Arsenic and Old Lace" .....	April 15-17 & 22-24
City Wide Rummage.....	April 30
Buffalo Days.....	June 3, 4, 5
Relay for Life.....	June 17 & 18
43rd Annual Hot Dog Night.....	July 14
Border to Border.....	July 25 & 26
Luverne All-School Reunion.....	July 29, 30, 31
Rock County Fair.....	July 28, 29, 30
55th Tri-State Band Festival.....	September 24

*For information contact Luverne Chamber of Commerce - 507-283-4061*

*luvernechamber@iw.net*



**Luverne City Offices**

PO Box 659, Luverne, MN 56156

507-449-2388 (24 hour voice mail)

<http://www.cityofluverne.org>



# Luverne School District welcomes you

We, at Luverne Public Schools, are pleased to welcome all competing bands, their

families and fans to the 53rd Annual Tri-State Band Festival.

We are proud of our facilities, programs and students, and enjoy showcasing the school and community at this major event.

District 2184 has a regional reputation for providing excellent educational opportunities for all students.

This year 1,288 students are enrolled for the 2004-05 school year.

Roughly 90 percent of



our graduates continue their education beyond high school with over 90 percent of those students completing their post-secondary program.

Typically 80 percent of our graduates take the ACT exam with an average result of 22.4.

The Luverne Dollars for Scholars Chapter is ranked second in the United States with a net worth of significantly more than two million dollars.

This year, the Dollars for Scholars program passed the milestone of dispersing more than \$1 million since it began in 1984.

Scholarships awarded ranged from 500 to \$4,000 to eligible graduates.

We offer all day every day kindergarten supported by Reading

Recovery and Title 1 programs.

The district is currently reviewing the new Social Studies and Science Standards established by the State of Minnesota.

The district continues to use the Four Block framework for language arts as well as Accelerated Reader and Reading Counts to supplement our language arts curriculum.

Students have a wide variety of subject areas to choose from, including a well developed vocational area, advanced sciences, math, Spanish and German.

Many high school courses are articulated with area post secondary institutions which allows both high school and college credits to be earned simultaneously.

In addition, we also offer Advanced Placement in Literature and Calculus.

The students are divided into K-5, 6-8 and 9-12 levels.

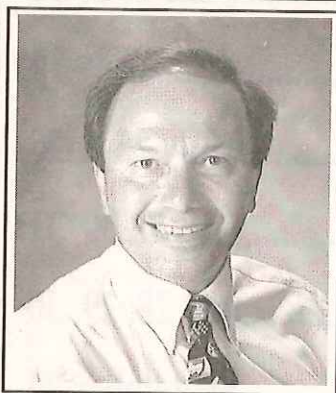
We have two building principals and a total of 95 full time equivalent teachers.

Because we offer a wide variety of opportunity and a school of top quality, more than 100 students have chosen to attend our district through the open enrollment option.

As a school and community we welcome you to the Tri-State Band Festival another tradition of excellence in Luverne, Minnesota.

**Vince Schaefer,  
Superintendent**

Visit us on the Web:  
[www.isd1284.net](http://www.isd1284.net)

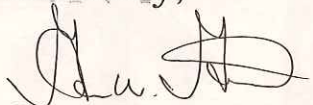


## Welcome to Luverne's 54th Tri-State Band Festival

On behalf of the City of Luverne, it is a pleasure to welcome band members, parents, and spectators to the Tri-State Band Festival.

We hope you enjoy your visit and welcome the opportunity to acquaint you with our community - beautiful parks, excellent shopping, and friendly people.

Sincerely,

  
Glen Gust, Mayor





Lori Ehde photo/Reprint 0908.bandfest committee

## Tri-State Band Festival Committee

The Tri-State Band Festival Committee is an arm of the Luverne Area Chamber of Commerce, and its role is to run the festival from year to year. It's a demanding job that requires efficient teamwork from each of its members, who work on organizing the event for nearly a year prior to each festival.

Members of the Tri-State Band Festival Committee meet regularly throughout the year, but the month of September is the time of year committee members swing into action. The 2004 Tri-State Band Festival Committee includes (front row, from left) Paula Thielbar, Pam Haakenson, Dianne Ossentfort, Mike Haakenson, Linda Wenzel, Janine Papik, Bill Stegemann, (second row) Jack Bennett, Anna Van Batavia, Margaret Cook, Mary Goheen, Marcia Bork and Tara Zewiski. Committee members not pictured include Kevin Aaker, Jim Boeve, Keith Aanenson and Carla Ennenga.

Welcome to the 2004  
Tri-State Band Festival

**CONNELL  
CAR CARE**

Quality Used Cars

509 E. Main • Luverne, MN  
507-283-2341 • 800-884-2341

[www.connellcar.com](http://www.connellcar.com)

After Hours: Terry Connell 507-283-8848

"AFFORDABLE PROFESSIONAL SERVICE"



**Band Fest Special!**

**20% Off  
STOREWIDE**  
**New Fall Fashions and Shoes**  
Good Sat., Sept. 27 only

*Gabe's*  
**Clothing & Shoes**  
For Men & Women  
217 E. Main Street • Luverne, MN • 507-283-8224

No Tax  
on Clothing  
& Shoes





# Living for music

## Parade marshal has long history of musical involvement

By Sara Strong

Dolly Talbert — a woman whose name has become synonymous with music — will lead the Tri-State Band Festival parade as marshal this year.

Talbert is known for her piano playing, teaching and her long years as a vocal instructor at Luverne High School.

She gets credit for many of the lifelong musical habits of Luverne graduates.

"There's so many ways you can use your music in your adult life," Talbert said. "There's been a lot of kids who went through the program who either work as musicians, teach music, or who even work with their churches in music."

Being the Tri-State Band Festival marshal is one of a long list of honors in Talbert's life, which is full of musical highlights.

She was named Minnesota Music Educator of the Year in 1992. That award meant a lot to Talbert, since it required nominations and was judged by a strict panel.

She said it was important to her because many times, instructors from the Metro area are chosen.

One of Talbert's choirs also performed at the Minnesota Music Educators Association, chosen by audition tapes and an application process.

Another group of students performed at the Air Force Academy Chapel in Colorado Springs. Talbert said the acoustics of building itself made the choir members realize how



Sara Strong photo/banddolly

This year's Tri-State Band Festival Parade Marshal, Dolly Talbert, is known for her piano playing, teaching and her long years as a vocal instructor at Luverne High School.

good they could sound.

"The chords just hung in the air," she said.

Talbert also taught in Sauk Rapids, Rush City, Pine City and Belgrade.

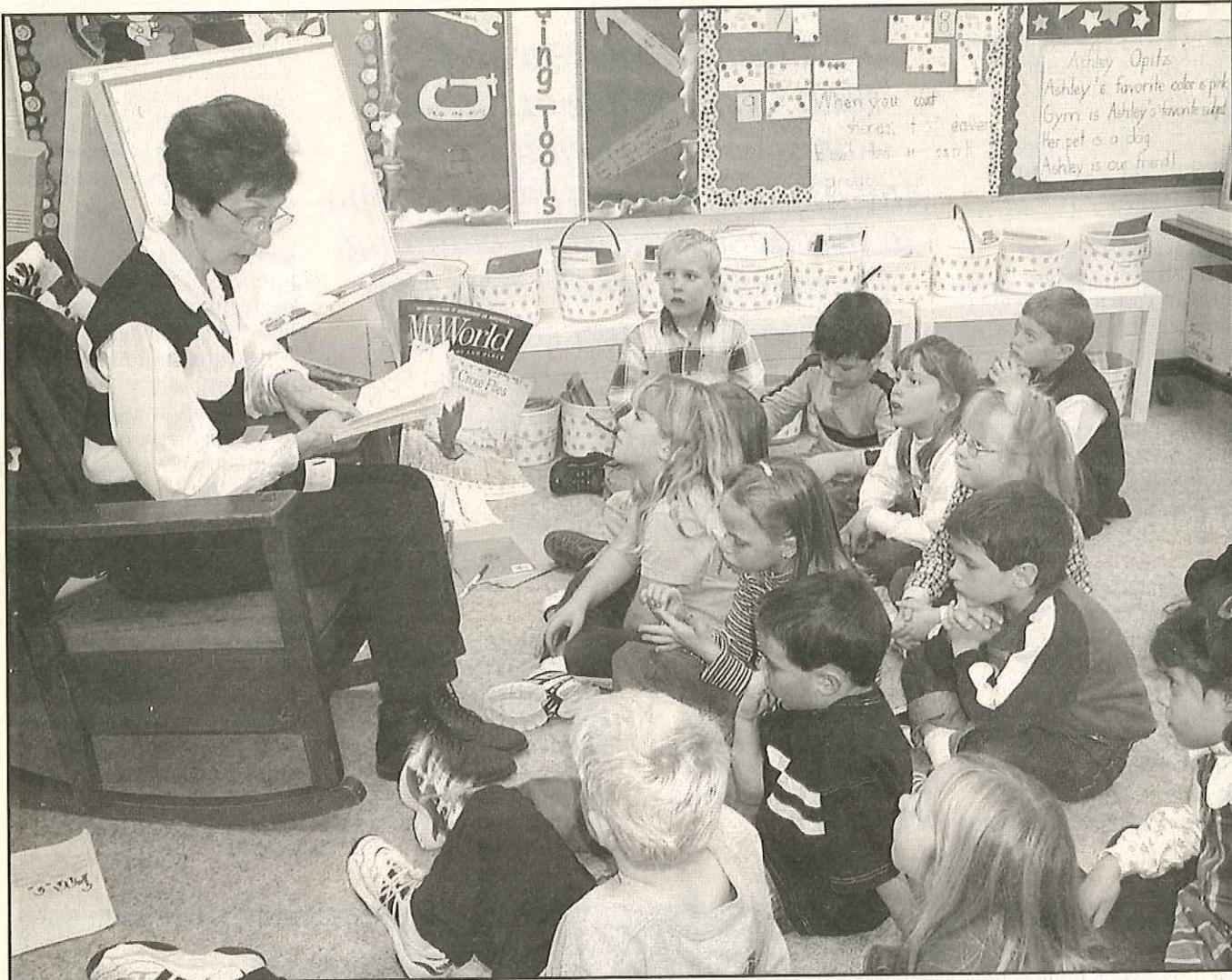
Many people might not

realize that Talbert is a composer, herself, although most of her work isn't publicly performed.

While a teacher in Luverne, she was in charge of choir programs,

including junior and senior high choirs, mixed choir, women's choir, theory for seniors, voice lessons and other vocal





Even though Dolly Talbert been retired from teaching for 11 years, Talbert is still filling her schedule with musical activities. For some of those continued efforts in the school, Talbert was named the 2001 Friend of Education.

## Dolly Talbert/Continued from page 6

activities. Under her direction, Luverne earned many superior ratings in regional and state contests. Talbert received her

bachelor of science degree in music education from Bemidji State university, but she continued education through

Mankato State, St. Cloud State, the University of Minnesota and St. John's University.

Talbert said she

enjoyed the entire process of working on notes and enunciation with

Dolly Talbert/See p. 8



**Luverne  
Community Hospital**

305 E. Luverne, P.O. Box 1019  
Luverne, MN  
507-283-2321



Luverne Area  
Community Foundation

[www.luvernecommunityhospital.org](http://www.luvernecommunityhospital.org)

**Sincerely Yours Hairstylists**

walk-ins welcome • open evenings  
123 E. Main Luverne • 507.283.8061

**Cuts • Foils • Nails  
Perms • Colors  
Manicures & Pedicures  
Tanning**

Felicia • Mary • Valerie • Linda • Pat • Tracy



## Dolly Talbert/Continued from page 7

individuals — and bringing their voices together in a final, collective performance.

"When that happens, you just get goose bumps," Talbert said.

### Still playing hard

Even though she's been retired from teaching for 11 years, Talbert is still filling her schedule with musical activities.

For some of those continued efforts in the school, Talbert was named the 2001 Friend of Education.

She works in the school with the music program, accompanying instrumental and vocal students for competitions. She has accompanied elementary and middle school programs as well.

She is noted for writing songs for the elementary school's Character Building program, and she

*"Nothing is more wonderful than to see people at nursing homes who are looking down, and all of a sudden pay attention to the music, and start clapping. Or, they hear an old song they used to know and sing along.*

*It's valuable for the kids to see that, too."*

— Dolly Talbert,

*Tri-State Band Festival Parade Marshall*

still has about 20 private students.

Talbert still reaches out through music by doing personal performances at nursing homes and by doing public recitals with her students.

"Nothing is more wonderful than to see people at nursing homes who are looking down, and all of a sudden pay attention to the music, and start clapping. Or, they hear an old song they used

to know and sing along. It's valuable for the kids to see that, too," Talbert said.

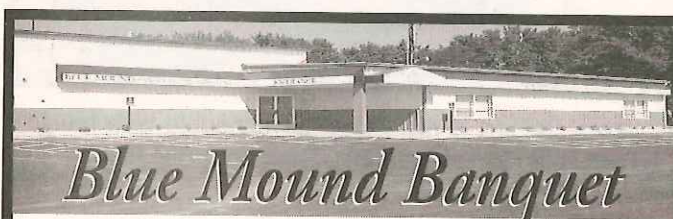
She has a love for music and the process of creating or interpreting it — but it's a tough love.

Talbert is known for getting things right and admits her teaching and performing style is strict and "of the old school."

Lynette Hoiland is a former student of Talbert's. She said, "Dolly is the strongest musical influence of my life. ... I can't think of a better parade marshal."

Hoiland is a worship leader for New Life Celebration Church and has been active in other church and community musical projects, including Green Earth Players drama productions. Hoiland sings at weddings and is asked to perform solos for other

Dolly Talbert/See p. 11



## Blue Mound Banquet

### & Meeting Center

*"Where people meet for a good time"*

401 West Hatting, Luverne • 507-449-1122

Deli 507-283-2557

- SEATING FOR 400
- Fully Catered Meals
- Wedding Cakes
- Floral Designs
- Fine Linen & China Service
- Table Service available
- Professionally Staffed Facility
- Unlimited Menu Choices
- Specialty Groups
- Full Bars
- Accommodations for DJ or Live Band
- Exceptional Audio Visual capabilities
- Non-smoking Facility
- Off-site Catering available
- LIMITED Dates available



Your Full Service  
Supermarket

205 E. Warren  
Luverne, MN  
283-4429

**Glen's**  
*Food Center*

[www.glens-food.com](http://www.glens-food.com)

Hours: Mon. - Sat. 7 a.m. - 11p.m.; Sun. 8 a.m. - 9 p.m.

**Deli • Fresh Baked Bakery Products**

**Freshest Produce in the Midwest**

**Fresh Quality Meats • Floral • Dry Cleaning**

**ATM Cash Machine • Lottery • Money Orders**



# Buttons for sale

Mayor Glen Gust (right) purchases the first band button from Luverne Area Chamber of Commerce Director Dave Smith for the annual Tri-State Band Festival. Committee members have been working to sell the buttons, which serve as admission to the field events.





Since 1948

# LUVERNE FARM STORE

Quality & Service

S. Highway 75 • Luverne, MN • 507-283-9555 or 1-800-956-9556

Serving the local area with quality service since 1948

- Livestock Management & Feed Milling
- Hog, Cattle, Equine & other feeds
- Lawn Care Service
- Lawn & Garden Health Supplies
- Pet & Specialty Feeds



## ServiceMASTER®

### Back to school time?

ServiceMaster is the **smart choice** for all your cleaning needs!

Call for a  
**FREE Estimate**  
507-283-9473  
888-900-9473



## BRANDENBURG GALLERY

211 E. Main - Luverne, MN - 507-283-1884

Monday - Friday - 8:00 AM - 5:00 PM

Thursday Evenings until 8:00 PM

Saturday - 10:00 AM - 5:00 PM

*Good Luck to all Participants!*

## MINNWEST BANK LUVERNE

MoneyLine (888) 616-BANK • [www.minnwestbank.com](http://www.minnwestbank.com)  
Member FDIC

MINNWEST BANK GROUP



(507) 283-2366 • 116 East Main • Luverne



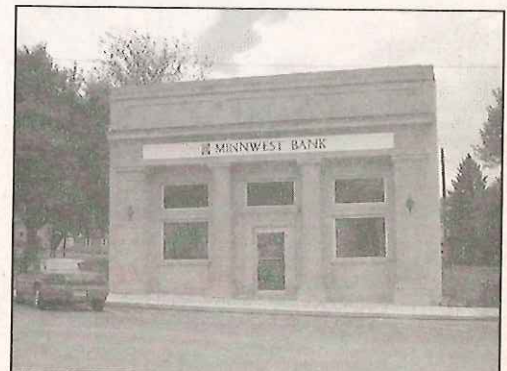
(507) 449-5888 • Glen's Food Center  
205 East Warren • Luverne

**Come visit  
our friendly  
staff at  
any of our  
convenient  
locations.**

**ATM  
available  
at Main  
Street &  
Hwy. 75.**



(507) 283-9131 • Hwy. 75 • Luverne



(507) 673-2334 • Main Street  
Beaver Creek



## Dolly Talbert/Continued from page 8



events.

Hoiland's three children took lessons from Talbert as well.

Hoiland credits Talbert for honing her skills and expecting the best from her, and all her students.

"She gets results by having high expectations," Hoiland said. "If you perform well for Dolly, you earn her respect, and I've always tried to do that."

Recently, Talbert's "high expectations" came out in her when she pointed out a problem in the church choir where she's the accompanist.

One choir member turned to her and said, "I feel like I'm getting ready for contest."

Talbert said, "We were laughing and I was trying to apologize — but once a teacher, always a teacher, I guess."



Stop by and check out our variety of **Fine Gourmet Foods, Linens, Dishware & Collectibles**

**Grapevine's**  
Gifts for all of life's journeys

121 E. Main Street, Luverne, MN 507-283-2137

## Verne Drive-In Theatre

South Hwy. 75 • Luverne, MN

507-283-0007

**Movies Nightly**

**Concession Stand  
featuring:**

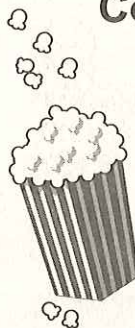
**Pop • Popcorn**

• Hot Dogs

• Barbecues

• Pizza

• Nachos



Check out our website for movies  
[www.verndrivein.com](http://www.verndrivein.com)





# Pump'NPak



1002 S. Kniss, Luverne • 507-283-3942

OPEN 7 DAYS A WEEK 6:00 a.m. to 12 midnight

Join the Pump N' Pak Frequent  
Fueller Club and Save \$\$\$ on Gas.

KRISPY KREME'S • CANDY • POP • BEER  
SNACKS • COFFEE/CAPPUCCINO • CIGARETTES  
LOTTERY • ATM • PAY PHONE

## Welcome to Luverne

from the office of

**Skewes, Klosterbuer  
& Vajgrt, LLP**

120 N. McKenzie, Luverne, MN  
507-283-9111

# Z P P I N I F I R E N Z E

stainless steel modular Italian charm bracelets



**Buy 3 charms -  
FREE bracelet.**

It's Zo Zexy  
to Express  
Yourself.

Enjoy a relaxing shopping  
experience at Luverne's  
largest & finest gift shop.

# Rocking Horse

Gift Shoppe



208 E. Main, Luverne • 507-283-4441



# 9



## Extra Value Meals



Starting at

# \$3.19

each

*Save over \$1 each!!!*

**Double  
Cheesburger  
or McChicken  
Extra Value  
Meals \$3.19**

**Triple Thick  
Milkshakes**



I-90 and S. Hwy. 75, Luverne, Minn.



© 1999 McDonald's Corporation

PLUS TAX-PRICES VARY BASED ON INDEPENDENT OPERATOR PARTICIPATION





## Winning button design

Whitney Maine (right) submitted the winning design for this year's Tri-State Band Festival Button.

The design features all the musical components in a marching band and contains information about the festival.

Maine is pictured with Pam Haakenson, representing the Tri-State Band Festival Committee.

Traditionally, high school students create the designs for the buttons which are sold to support the community activity.

The parade and field competition are scheduled for Sept. 25.



Submitted photo

## Your Full Service 24 Hour Bank



- **Internet Banking** [www.ffmbank.com](http://www.ffmbank.com)
- **FF&M Line** 283-1811
- **E-Statements and Internet Bill Pay**
- **ATM at our West Entrance**



# First Farmers & Merchants

NATIONAL BANK

303 E. Main, Luverne MN  
507-283-4463  
[www.ffmbank.com](http://www.ffmbank.com)

**We believe in you.** <sup>TM</sup>  
Member FDIC. And the community.



## Good Luck to the Tri-State Band Festival participants!



**Hartquist Funeral Home  
Engbretson Chapel**  
209 West Elm Street  
Luverne, Minnesota 56156  
507-283-2777  
Jeff Hartquist

## CRAGOE REAL ESTATE

129 E. Main • Luverne, MN • 507-283-2647 or 1-800-689-2647  
Gene Cragoe, broker -- Home phone: 507-283-1839  
Tammy Makrum, Bill Korth, Andy Steensma & Bob Zinnel



E-mail:  
info@cragoe.com

*Homes • Acreages • Commercial • Land  
Rentals • Lake Property • Mobile Homes*

to buy, sell or view: [www.cragoe.com](http://www.cragoe.com)

## SEARS

**In  
Stock  
Or We  
Will  
Order!**

Appliances  
Lawn & Garden  
Tools • Electronics  
Exercise Equipment

**SAME**

National Pricing  
National Service  
National Warranties

**507-283-8786**

**We  
Match  
Prices**

500 East Main (East Main Street & Blue Mound Ave.) in Luverne, MN  
HOURS: Monday - Friday 9 a.m. - 8 p.m., Saturday 9 a.m. - 6 p.m., Sunday 12 noon - 5 p.m.  
Brett & Tammi Miller, owners

## THE FURNITURE HOUSE

*"Now that's what you had in mind"*

- Furniture for Every Room in Your Home!
- Hunter Douglas & Fabricut Window Fashions
- Full Line of Accessories
- Free In-Home Design Consultation

**507-283-9501**

Tim & Karis Gust, owners

## We Buy Corn.

(members or non-members)



**We Sell Quality Dry Distillers Grain  
& Modified Wet Feed.**

For Current Prices Call Jay at:

**507-283-9518**

or Toll Free at:

**1-877-333-CORN**

E-mail: [jsommers@agrienergy.com](mailto:jsommers@agrienergy.com)



502 South Walnut, Luverne, MN 56156

Visit our website: [BuyCorn.com](http://BuyCorn.com)

## Blue Mound Ice Arena

601 West Hatting • Luverne, MN  
507-449-9138

### ARENA ACTIVITIES:

- Hockey
- Public Skating
- Ice Shows
- Skating Lessons

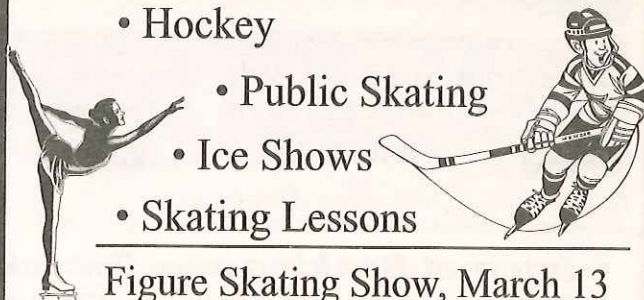


Figure Skating Show, March 13

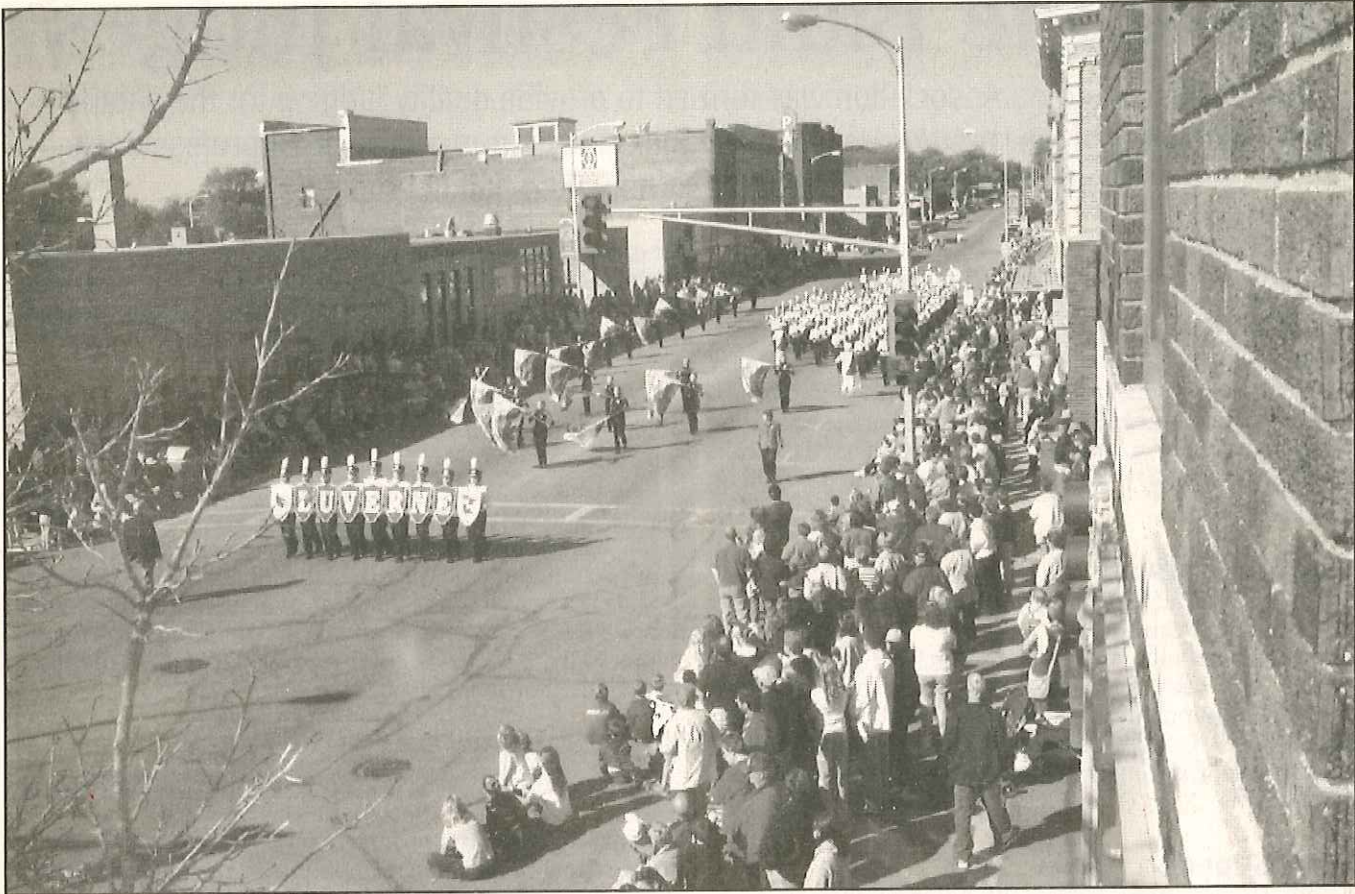
Ice Sheet: 85' x 200' • Seating Capacity: 500

Hourly Rental Available

**Building available for off season rental  
during summer months.**

Mailing Address: P.O. Box 591, Luverne, MN  
or call 507-449-9138





A seat in Luverne City Hall's second-floor chambers provides a bird's eye view of Luverne High School's marching band performance during the 2001 Tri-State Band Festival.

## *BaVa Video Productions*

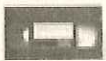
Do you have a **GRADUATING SENIOR**?  
Wouldn't it be nice to have all of those video  
taped memories on DVD?

Let Us help. We can turn your VHS tapes into  
personalized DVDs.

<http://www.bavavideoproductions.com>

(507) 220 - 4947

B. Kim Aartzen



Welcome to the

## Tri-State Band Festival!

\*\*\*\*\*

**STROEH'S AUTO CENTER**

321 East Main Street • Luverne, MN  
507-283-4226

*Where fine craftsmen  
produce work with pride!*

## Country Cupboards

2 miles south of Luverne, MN on Highway 75

**507-283-8176**

**Good Luck to all Band Festival  
Participants!**

### Vander Kooi Law Office, P.A.

Benjamin Vander Kooi, Jr.

Attorney at Law

127 E. Main • PO Box 746

Luverne, Minnesota

Phone 507-283-9546



# Meet the Band Festival judges

The Tri-State Judging Association was formed to provide quality judging for the parade and field bands in the tri-state area. Tom Haugen draws from a pool of 25 professionals, all of whom have had success in marching band competition.

## Tom Haugen

Tom Haugen will judge marching and maneuvering general effect.

Tom Haugen is the founder of Tri-State Judging Association and is an active clinician, guest conductor, and judge in the concert, jazz, and marching band areas. After 40 years of teaching, Tom is presently serving as an adjunct faculty member for Luther College, Decorah, Iowa, where he supervises student teachers in the field of music education.

## Richard Dufault

Richard Dufault, Waseca, will judge marching and maneuvering execution.

Richard Dufault, retired from teaching in the public schools, has been an active adjudicator and clinician for bands during the past 30 years. His bands, during his teaching years, were very centered around concert literature, solo and ensemble contests as well as marching competitions.

## John Greene

John Greene, Apple Valley, will judge percussion.

John is presently in his 26<sup>th</sup> year of teaching, with the past 19 years in the Rosemount-Apple Valley School District where he also serves as an instrumental music coordinator. Currently at Falcon Ridge Middle School in Apple Valley, he teaches 6<sup>th</sup> and 8<sup>th</sup> grade bands, percussion ensemble and studio percussion and flute. He is judge administrator for the Mid-America Competing Band Directors' Association and the Minnesota Percussion Association.

## Lane Powell

Lane Powell, Cresco, Iowa, will judge color guard.

Lane Powell is in his 11<sup>th</sup> year of teaching and is currently the Director of Bands at Fillmore Central Middle School in Preston. Previous to this position, Mr. Powell taught for four years in Cambridge, Ill., and five years at Crestwood High School in Cresco, Iowa. A

frequent adjudicator and clinician, Mr. Powell's bands have earned consistent superior ratings and have won several regional and state level festivals in the areas of concert, jazz, and marching band.

## Andrew Schmidt

Andrew Schmidt, New Brighton, will judge music execution.

Andrew Schmidt is presently the band director at Highview Middle School in Mounds View. His marching band background includes marching with the Irondale High School Band of New Brighton and with the Madison Scouts Drum and Bugle Corps of Madison, Wis. He started his teaching career as a middle school band director in Sioux Falls, S.D. Mr. Schmidt is active as a clinician and an adjudicator in the upper Midwest.

## Dave Heilman

Dave Heilman, Madison, Wis., will judge music general effect.

Currently director of instrumental music at McFarland High School in Madison, Mr. Heilman is also the executive director of the Wisconsin State High School Marching Band Championships, an active clinician, drill designer, percussion instructor and adjudicator with concert bands, percussion ensembles, marching bands and show choirs.

Welcome to Luverne's  
54th Tri-State Band Festival!  
**RENFRO** *Variety Store*

***It's the FUN place to shop  
for all your needs!***

206 East Main Street, Luverne, Minnesota

**507-283-2628**

Margaret Vegge, owner

**TOTAL CARD, INC.**



1 Roundwind Road  
Luverne, MN 56156



**Blue Mound  
Chiropractic**

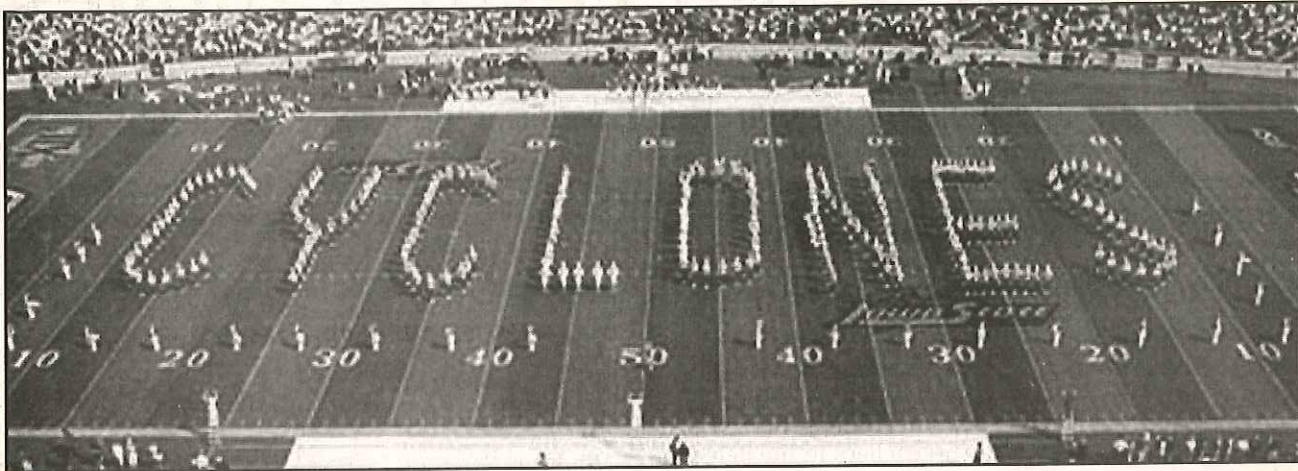
123 W. Main • Luverne, MN  
Most insurance accepted.

**507-283-3700**

Dr. Jeff Priebe  
Chiropractor

Hours: Mon. - Tues. - Wed. - Fri. 8 a.m. - 5:30 p.m.  
Thurs. 1 p.m. - 6:30 p.m.





## Iowa State University Marching Band is guest band for 2004 Tri-State Band Fest

Composed of up to 300 student members, the Iowa State University Cyclone Football "Varsity" Marching Band is a vital part of the action of Big XII football.

Known for their polished and energetic approach to halftime entertainment, the Cyclone Marching Band marches in a variety of styles to sizzling musical arrangements — performing a variety of different shows over the course of the season.

Each year our athletic bands perform before more than a half-million people, including the fans who regularly pack Jack Trice Stadium.

Recent performances have also included the Humanitarian Bowl in Boise, Idaho, the Eddie Robinson Classic in Kansas City, the Insight.com Bowl in Phoenix, Ariz., and the Independence Bowl in Shreveport, La.

Through rehearsals, travel, and the excitement of marching in front of thousands of cheering fans, the members of our Cyclone Marching Band share rich experiences that create social as well as musical bonds.

Like all bands at Iowa State University, the Cyclone Marching Band is open to all students, regardless of major.

More than 70 different majors are represented in the band, with more than one-third of the students majoring in engineering.

On game weeks, the marching band rehearses five times a week for one hour and 20 minutes

*We would like to thank the members of the Luverne Area Chamber of Commerce for the invitation to perform this afternoon, and wish all of the bands good luck in their performances today.*

a day, and on the mornings prior to home football games.

On non-performance weeks, the band rehearses four times a week.

While there is a large time commitment, the students find band to be a fun and active break from their studies.

Most of our students actually record higher grade-point-averages

over the fall semester when compared to the spring semester.

We play at all home football games (six in 2004) and take at least one trip per season.

The band also performs in the annual Band Extravaganza at the C.Y. Stephens Auditorium on campus, which also features the wind ensemble, symphonic band and jazz ensemble.

Regional marching band exhibitions/competitions are often our favorite performances, as we are thrilled to play for such enthusiastic crowds.

In addition to our performance at the Tri-State Band Festival, the band has also traveled and performed at Muscatine, Iowa, High School and at the annual Iowa/Iowa State football game this past month.

For more information on the Cyclone Marching Band and other bands at Iowa State University, visit us on the Web at [www.music.iastate.edu/org/marching](http://www.music.iastate.edu/org/marching).


We would like to thank the members of the Luverne Area Chamber of Commerce for the invitation to perform this afternoon, and wish all of the bands good luck in their performances today.






### Luverne Middle School Band hosts 2004 Tri-State Band Festival

The host band for the 54<sup>th</sup> Tri-State Band Festival is the Luverne Middle School Band. The 60-member seventh- and eighth-graders in the band will march in the parade. The band is directed by Mary Goheen. They will play the selection "Free Spirit" by Andy Clark.




**Buffalo Ridge**  
INSURANCE


808 S. Kniss  
Luverne, MN  
507-283-2381



Marilyn Bloemendaal  
CPCU



Cory Bloemendaal



Pam Haakenson

Auto • Home  
Business  
Life • Health  
Investment  
Farm • Crop

CALL FOR YOUR APPOINTMENT TODAY!  
**(507) 449-7424**



**SALON  
JaRiah**

222 E. MAIN STREET, SUITE 101  
LUVERNE, MN 56156

**MARY AUKES**

**Welcome to Luverne's  
54th Tri-State Band Festival**

**Sudenga  
Communications, Inc.**



Authorized Agent

504 E. Lincoln • Luverne, MN • 507-283-0066  
207 S. Story • Rock Rapids • 712-472-3342

**Welcome to the 54th  
Tri-State Band Festival**

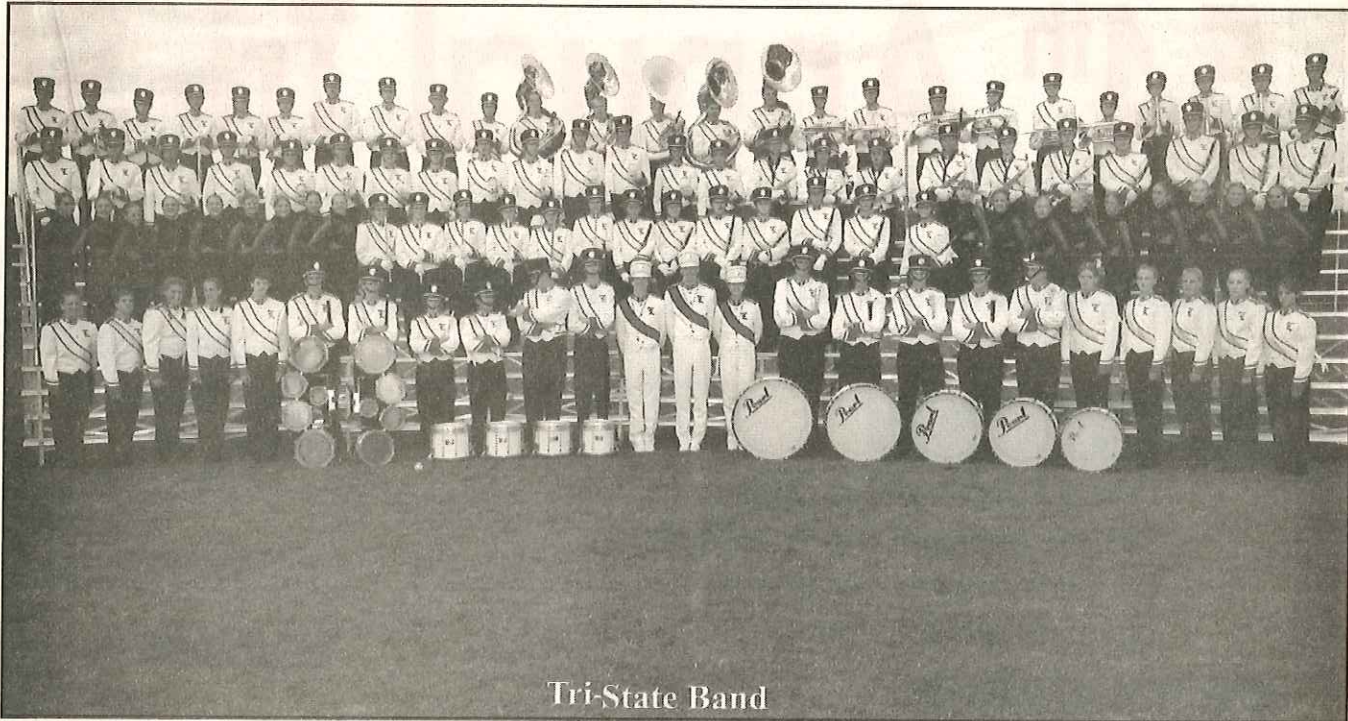
For all your insurance needs see  
Carey Tunnissen & Linda Wenzel.



**MINNWEST INVESTMENT &  
INSURANCE CENTER**

located in the Minnwest Bank Building  
**507-283-9586**





Tri-State Band

## Luverne, MN

The Luverne High School Band is under the direction of Dale Nelson and Mary Goheen. Drum majors are Christina Lovett, Craig Oeding and Andraya Gacke. Senior High enrollment is 385 students.

 **Lewis**  
family drug



Have your parade film developed  
while you have lunch.

117 S. Spring St., Luverne, MN 507-283-9549



## COOL STUFF

STOP  
AND SEE  
WHAT'S NEW.



## THOSE BLASTED THINGS

Vance or Becky Walgrave

S. Hwy. 75 and I-90, Luverne • 507-283-4027 or 507-283-4042



# 54<sup>th</sup> Annual Tri-State

**PARADE TIME: 10 a.m. Main Street**

## PARADE ORDER

VFW & Legion Color Guard  
Parade Marshal (Dolly Talbert)  
Luverne Mayor (Glen Gust)  
Luverne Middle School Band (Host)

## BAND ORDER

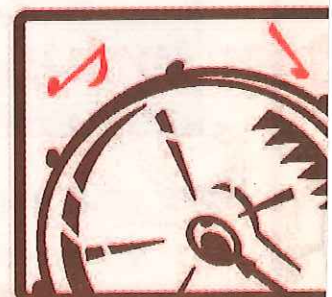
1. Garretson, SD.....A-1
2. Murray County Central, MN.....A-1
3. NRHEG - New Richland, MN.....A-1
4. MACCRAY - Clara City, MN.....A-1
5. Sibley-Ocheyedan, IA.....A
6. Sioux Center, IA.....A
7. West Lyon, IA.....A
8. Luverne, MN.....AA
9. Pipestone Area, MN.....AA
10. Stewartville, MN.....AA
11. Worthington, MN.....AAA
12. Brookings, SD.....AAA
13. Brandon Valley, SD.....AAA
14. Champlin Park, MN.....AAAA
15. Hastings, MN.....AAAA
16. Sioux Falls Washington, SD.....AAAA



Need help? See any  
committe  
wearing white jack

No coolers allo

Handicap  
and seatin





# Tri-State Band Festival

## FIELD EXERCISES: 1 p.m. Luverne H.S.

(Field Gates will open at noon)

### FIELD ORDER

#### National Anthem

performed by Karen Radisewitz, Luverne

1:00	Sibley-Ocheyedan, IA .....	A
1:15	Sioux Center, IA .....	A
1:30	West Lyon, Inwood, IA .....	A
1:45	Luverne, MN .....	AA
2:00	Pipestone Area, MN .....	AA
2:15	Stewartville, MN .....	AA
2:30 – 2:45 Break		
2:45	O’Gorman HS, Sioux Falls, SD .....	AAA
3:00	Brookings, SD .....	AAA
3:15	Huron, SD .....	AAA
3:30	Brandon Valley, SD .....	AAA
3:45	Champlin Park, MN .....	AAAA
4:00	Hastings, MN .....	AAAA
4:15	Washington HS, Sioux Falls, SD .....	AAAA
4:30	Aberdeen Central, SD .....	AAAA
4:45	Iowa State University	
5:15	Awards Ceremony	

Tri-State Band Festival  
member  
with red lettering.  
ed on the field.  
d parking  
available.

Good Luck to all participants

**CWGW**  
Business Insurance.

*Permitted*

Continental Western Group  
Tri-State Region  
Ten Roundwind Road  
Luverne, Minnesota 56156  
(507) 283-9561;  
(800) 533-0303







## Pipestone, MN

Pipestone Area High School has competed at the Tri-State Band Festival every year since its beginning in 1951. The band is directed by Michael Hensch. Drum majors are Michael Larson and Samantha Forseth. The band consists of 71 members.



**NEED SOME FRESH DECORATING IDEAS?**  
The professionals at *The Final Touch* have lots of unique suggestions and ideas that will help you coordinate the entire project.

**PAINT**  
Let us help you choose the perfect color for your home. 

**FLOORING DEPARTMENT**  
Durastone & Duraceramic Tile, Laminates, Vinyls, Carpeting, and more. Installation tech available.

**HUNTER DOUGLAS WINDOW FASHIONS**  
Many styles to choose from. We will measure and install for free with purchase.  
\*Some restrictions apply.

**WALLPAPER**  
All books on sale now! Nice selection of in-stock borders

**ALSO AVAILABLE:**  
Custom Framing and Glass Repair  
Unique Giftware Department

 **The Final Touch**  
A Complete Home Decor Store  
507-283-2565  
205 E. Main • Luverne, MN



We urge everyone to take the day off & attend the

# TRI-STATE BAND FESTIVAL

Good luck to all bands in the competition!!!

Confident in the future of  
Luverne & the surrounding areas.

**Latham Agency, Inc.**  
Insurance

126 E. Main • Luverne, MN • 507.283.9181

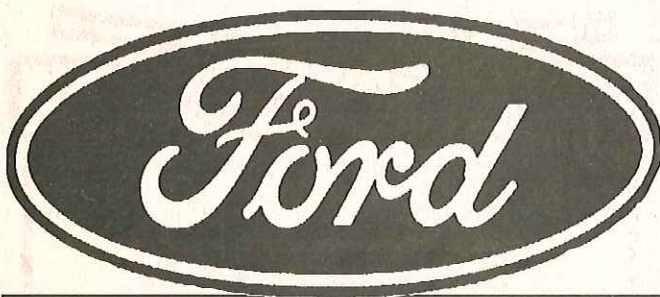






## Garretson, S.D.

Garretson High School (the Blue Dragons) will make its ninth appearance at the Tri-State Band Festival this year. The band will participate in parade competition only. The director is Nick Sittig. Drum majors are Hilary Jones, Val VanDeBerg and Betsy Karli. School enrollment is 177 students.



**JOEL HERMAN**  
home: 283-4148



**TOM STERRETT**  
home: 283-8615



**AL NELSON**  
home: 712-477-2390



Blue Oval Certified  
Thumbprint is a symbol  
of personal commitment  
to customer satisfaction.

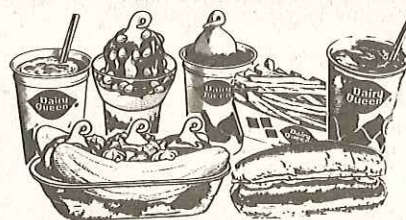
312 East Main • Luverne, MN  
507-283-4427 or 1-888-283-4427  
[www.hermanmotor.com](http://www.hermanmotor.com)

# Herman Motors

Celebrating 72 years in Luverne

Welcome to Dairy Queen...  
For a cool treat or a hot meal!

*HOT EATS  
COOL TREATS*



Luverne, MN  
Phone 283-9082  
Open 10:30 a.m.  
to 10 p.m.  
7 days a week

**We Treat You Right®**

Dairy Queen® stores are proud sponsors of the Children's Miracle Network  
Telethon, which benefits local hospitals for children.

©AM D.Q. Corp/2003

©Reg. U.S. Pat. Off. AM D.Q. Corp

## Insurance & Annunities



**Good Luck at  
Band Fest!**

Dave Gangestad,  
Lisa Diekmann  
and Tim Knoll

**The Estenson Company, Inc.**

419 East Main • Luverne, MN • 507-283-2386





## Brandon, S.D.

Brandon Valley High School has had 23 years of experience with the Tri-State Band Festival. Kevin Kessler, 1993 Luverne High School graduate, directs the band and is assisted by Bruce Wildes and Bob Goheen. Drum majors are Laura Meyer, Jodi Peterson, Lyndsay Polzin and Jillian Tucek. The school enrollment is 825 students.

### Brandon Natural Care Center

912 Redwood Blvd., Brandon, SD

*Our clinic will be offering massage therapy in addition to quality chiropractic care for your whole family.*

*Come in for your FREE consultation today, and see how Brandon Natural Care Center can help you with your health care needs.*

**Dr. Amanda J. Van Voorst**  
Chiropractic Physician

Accepting appointments now **Call: 605-582-8900**



*"Quality Chiropractic Care for the Whole Family"*

## A+ Kids Stuff

Brandon's Finest Children's  
Clothing Consignment Shop

Tues.-Fri. 10 a.m. - 5:00 p.m. Sat. 10 a.m. - 3:00 p.m.  
Closed Sunday & Monday



## My Door Is Always Open

*Call for a free market  
analysis on your property.*

**Kimberly A. Kremlacek**  
Salesperson



**Town & Country  
REALTORS Inc.**  
308 East Holly  
Brandon, SD 57005

Business  
Cellular

605-582-2111  
605-351-0650

[www.town-n-countryrealtors.com](http://www.town-n-countryrealtors.com)



**Superior Buildings &  
Lumber Supplies, Inc.**

MN License 20188205

• **Service** • **Experience** • **Quality**

E. of Luverne on Co. Rd. 4, 1.25 miles,  
2 miles S. on Co. Rd. 9 and E. 1 7/8 miles.

**Phone 507-283-4631 or 507-283-9713**  
**Luverne, Minnesota**





## Inwood, IA

West Lyon Community High School Band is under the direction of Lynette Wedeking. Ashley Ballou, Tyler Knobloch and Jordan Smidt are drum majors. West Lyon has participated in the Tri-State Band Festival for 39 years. The band will compete in both parade and field competition. The school has 238 students enrolled.



## Pella Corporation

1800 N. Main Avenue  
Sioux Center, IA  
Phone: 712-722-3800

## Farmers Elevator Coop

*"Large enough to serve...small enough to care"*

Alvord 712-473-2210 • Rock Valley 712-476-5321  
Doon 712-726-3252 • Hudson, SD 605-984-2224  
Larchwood 712-477-2705 • Inwood 712-753-4527  
Rock Rapids 712-472-2515 • Lester 712-478-4401



## Cooperative Elevator Association

P.O. Box 69 • 1107 2nd Ave. 333 South Central Avenue 823 Main Street • P.O. Box  
Sibley, IA 51249 Hartley, IA 51346 69 Ochevedan, IA 51345  
Phone 712-754-2526 Phone 712-728-2945 Phone 712-758-3621

Fax 712-758-3625 • cea@evertex.net



## Vickerman

DISTRICT 22 STATE SENATOR

**651-296-5650**

226 State Capitol  
St. Paul, MN 55155

Paid for by the Vickerman Volunteers,  
2252 221st Street, Tracy, MN 56175





## Slayton, MN

The Murray County Central High School Band will appear in parade competition only. It has participated in the Festival since the '70s. The band is under the direction of Carrie J. Backman. Emmalee Anderson is the drum major. The band has 40 members. School enrollment is 230 students.

Catering • Anniversary Parties • Banquets  
Graduation Parties • Meetings • Wedding Receptions

## Countryside Inn

*Family Steakhouse & Banquet Center*

STEAKS • SEAFOOD • CHICKEN

**Tim & Cindy Berglund**  
Managers

Bus. 507-483-2735  
Res. 507-264-3764

208 Louisiana Ave. • P.O. Box 307  
Adrian, Minnesota 56110

*Enjoy the 2004 Tri-State Band Festival!*

## Exchange State Bank



(507) 962-3250  
Hills, MN



(507) 855-2357  
Steen, MN

(507) 967-2570  
Ellsworth, MN

**"Good Banks In Good Communities"**

Member FDIC

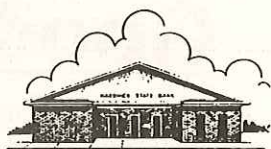




### Worthington High School

The Trojan Marching Band will again appear in the Tri-State Band Festival this year. The band will participate in parade competition only. No information about the band or its director were available for this printing.

### Hardwick STATE BANK



102 West Main St. • P.O. Box 35  
Hardwick, MN 56134-0035  
Phone 507-669-2150

Member F.D.I.C.

### Good Luck To All Band Festival Participants!

### Keith's Grocery & Bake Shoppe

219 Maine Ave., Adrian, MN

507-483-2959

Hours: Mon.-Sat. 8 a.m. to 9 p.m.; Sun. 8 a.m. to 2 p.m.

### SO JO's Sportswear

107 W. Main  
Pipestone, MN  
507-825-2906

#### and Embroidery

- Sweaters • Jackets • Socks
  - T-Shirts • Blankets • Hats • Towels
- in YOUR school colors!

Gifts for Weddings • Showers • Birthdays

#### COMPUTERIZED EMBROIDERY

for individual, team or group events!

A financial services organization like no other.

- Wide range of products and services
- Retirement plans
- Annuities
- Life insurance
- Mutual funds
- Health insurance
- And other benefits of membership



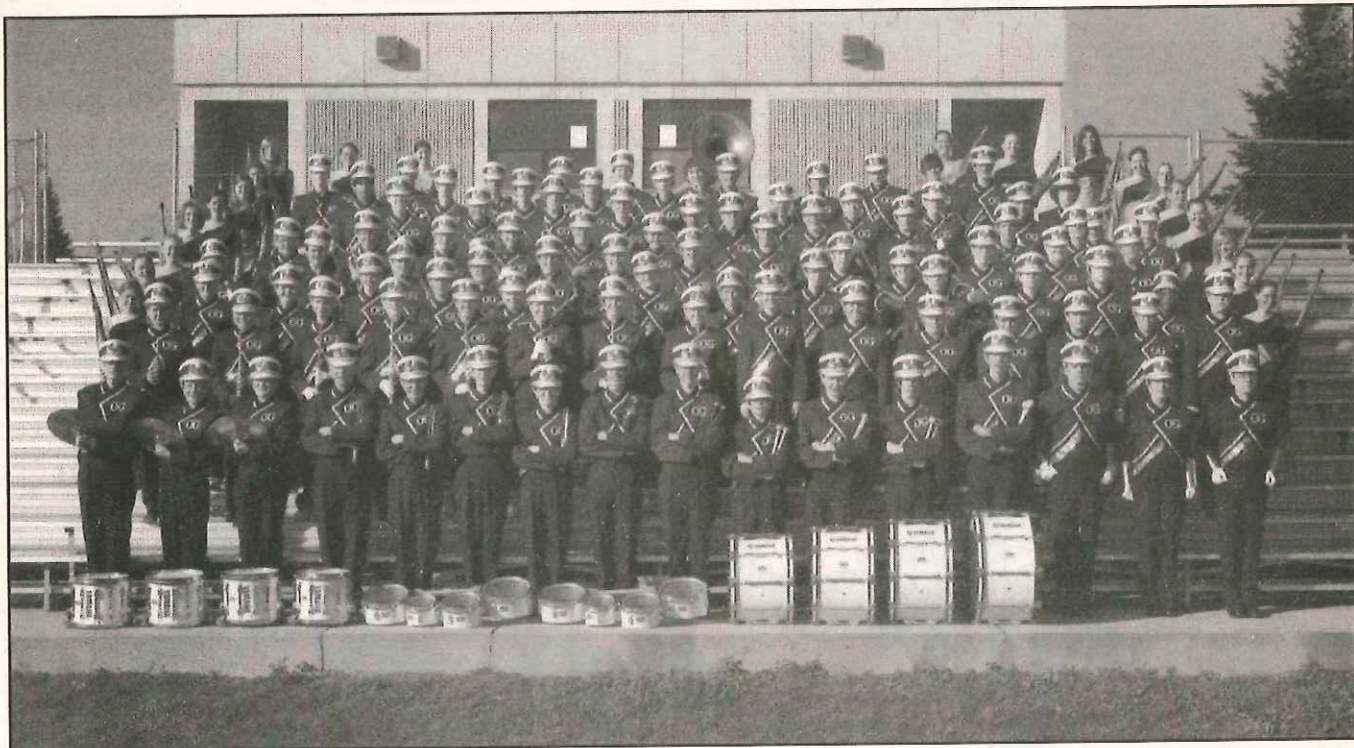
DALE SLIETER, RIC  
222 East Main Street  
Luverne, MN 56156  
507-283-3920

#### Thrivent Financial for Lutherans™

Registered Representative for securities offered through Thrivent Financial Investment Management, Inc., 625 Fourth Avenue South, Minneapolis, MN 55415-1665, 800-THRIVENT (800-847-4836), a wholly owned subsidiary of Thrivent Financial for Lutherans. Member NASD. Member SPIC.  
20328PB R7-04 2200-402670

©2004, 2002 Thrivent Financial for Lutherans





### Sioux Falls, S.D.

The O'Gorman Marching Knights have appeared in the Tri-State Band Festival three times. They will take part in field competition only. The band is under the direction of Jim Smith. Joe Cudzilo, Maddie Donovan and Ben Sieverding are drum majors. Student enrollment is 622.



## Sioux Valley Clinic

Luverne

300 East Brown Street • Luverne, MN 56156  
Phone 507-283-4476

## Good Luck

Adrian Dragons Marching Band  
in Tri-State Band Competition!



**Adrian State Bank**

P.O. Box 129 322 Maine Avenue  
Adrian, Minnesota 56110  
507-483-2447

Member FDIC



Custom  
Floor Covering  
Sales & Installation

## JERRY HOFF Floor Covering

311 West Dodge • Luverne, MN 56156  
507-283-4543



**Kozlowski**  
INSURANCE AGENCY

Call us for a price  
comparison today.



Shirley Top  
Agent



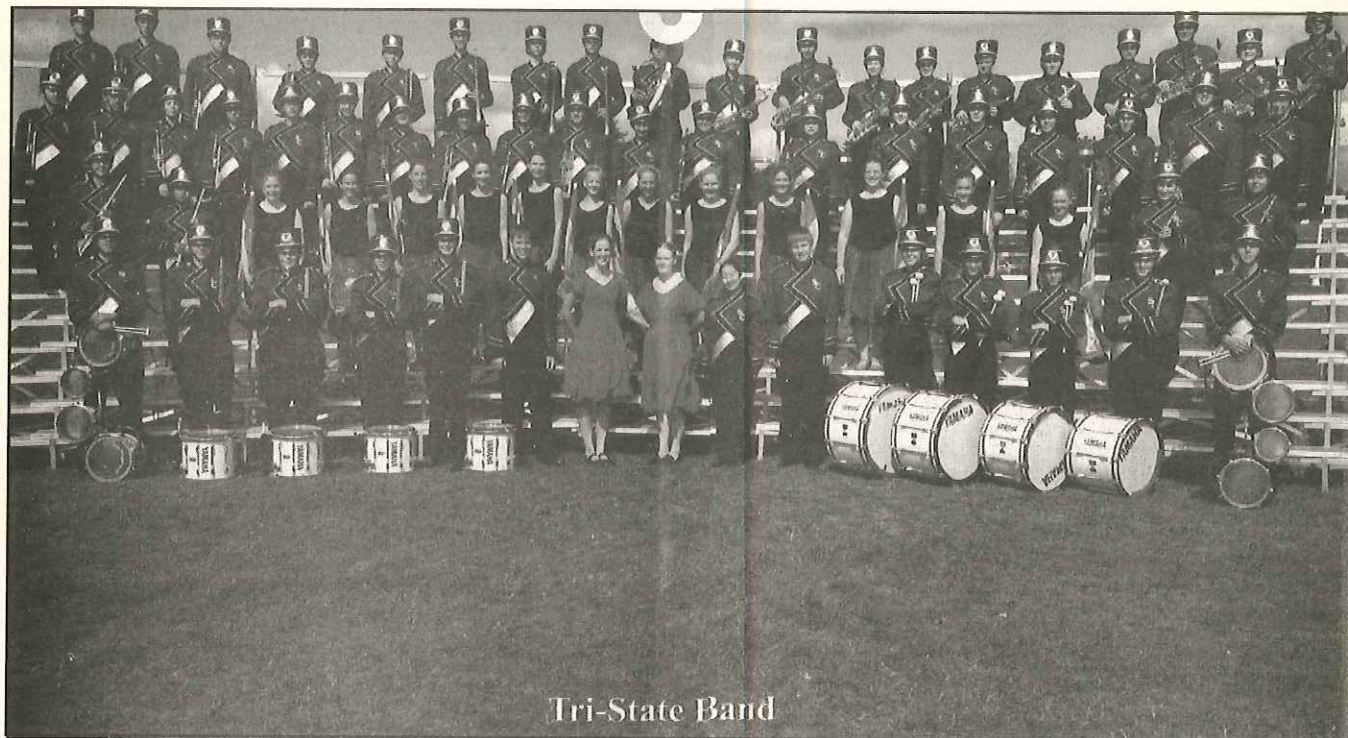
Sara  
VanNieuwenhuizen  
Agent/Customer Service

507-283-3704  
Toll Free 1-877-631-3704  
Fax 507-283-3733

904 South Highway 75, Luverne, MN

Main office located in Pipestone, MN Toll Free 1-888-825-3366






Tri-State Band

## Sioux Center, IA

The Sioux Center Community High School Marching Band has appeared in the Tri-State Band Festival for more than 30 years. The band is directed by Kyle Jahn. Drum majors are Meggan Jacobsma and Jean Yusten. The school's enrollment is 300 students.



**Luverne**

**Body Shop**  
**Auto Glass**

411 W. Gabrielson Road, Suite 2  
Luverne, MN 56156

Phone: 507-283-8711    Fax: 507-283-8711  
E-Mail: [luverne@iw.net](mailto:luverne@iw.net)

507-283-9161


I-90 & U.S. 75 So., Luverne, MN 56156

Call ahead for after hours pick-up

- Mag's Meat Market 10 a.m. - 4 p.m.
- Meeting & Party Rooms
- Open Mon. - Sat. 5 p.m.

*"We've STEAKED our Reputation on Quality since 1938"*

- STEAKS
- SEAFOOD
- COCKTAILS



**MAGNOLIA**  
STEAK HOUSE

*"The Original"*

**LUVERNE COMMODITIES**  
Full Service  
Commodity Office

Robert Loosbrock

1-800-950-4561  
Call collect 507-283-9575

1447 US Hwy. 75  
3 miles North  
of I-90 on HWY 75  
Luverne, MN 56156

Meulebroeck, Taubert & Co., PLLP

Certified Public Accountants  
190 S. Freeman • Luverne, MN 56156  
507.283.4055

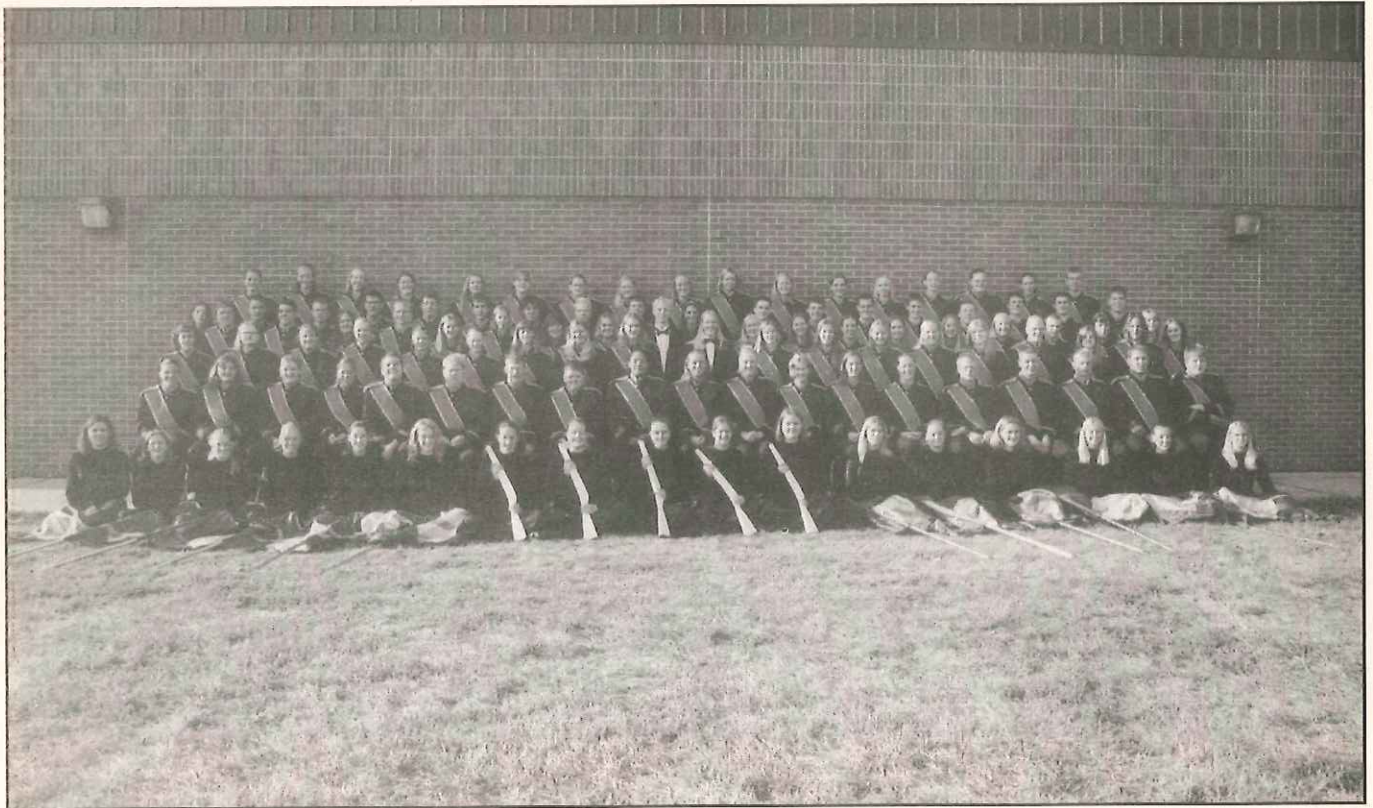
**Experienced tax preparers with offices in  
Pipestone, Luverne, Russell, Tyler & Lake Wilson**

- Tax planning and preparation
- Electronic tax filing available
- Agir-Plan™ - pretax medical deductions

- Accounting and book-keeping services
- Payroll services

Dave Friedrichsen, Michael Reker, Krista Kroon,  
Phyllis Vos, Jami Feikema & Lois Mulder





## Sibley, IA

Sibley-Ocheyedan High School is competing in the Tri-State Band Festival for its 34<sup>th</sup> year. They are entered in parade and field exercises. The Marching Generals are under the direction of Peter Carlson. Drum majors are Shannon Brockshus, Meredith DeBoom and Erin Thole. Enrollment is 302 students.

### Welcome to the Tri-State Band Festival

Serving Buffet (11 a.m. - 8 p.m.)  
on Saturday, Sept. 25



**Good Things Everyday!**

110 E. Main, Luverne  
507-283-2379



Trophies & Plaques  
Custom Engraving  
Free Delivery

Terry Reisch, owner  
211 S. Donaldson  
Luverne, MN  
507-283-2234

**We supplied and engraved the 2004  
Tri-State Band Festival Trophies!**

**Congratulations to all Tri-State  
Band Festival Participants!**

**Re-ELECT**

**Doug Magnus**



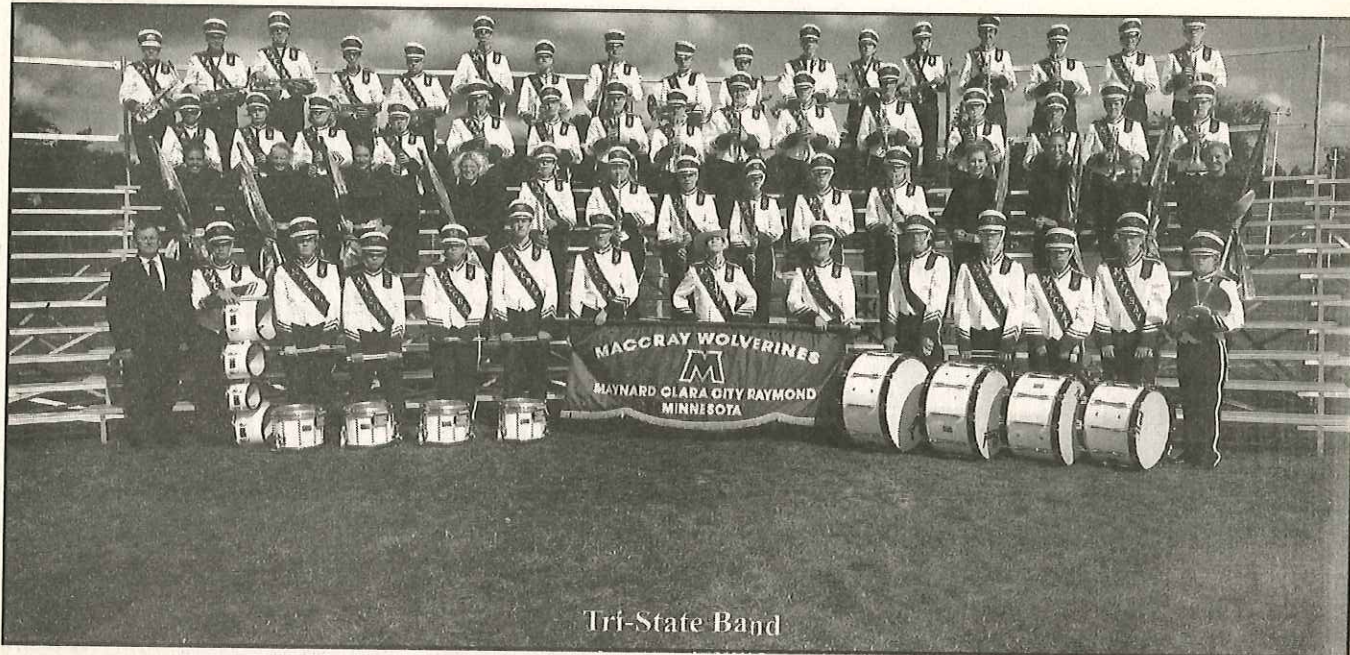
Responsible  
and  
Responsive

Government  
Working for You

**State  
Representative**

Paid for by the Doug Magnus Campaign Committee, Warren  
Hanson, Treasurer, 2924 Queen Ave., Slayton, MN 56172





Tri-State Band

## Clara City, MN

MACCRAY (Maynard, Clara City and Raymond) High School Band is making its second appearance at the Tri-State Band Festival this year. They will compete in parade only. The band is directed by Everett Schulz and assisted by Vickie Schulz. Drum major is Jodi Sunderland. School enrollment is 280 students.



102 E. Maple, Luverne, MN

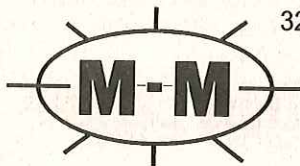
507-283-9151

Sam Berghorst

Lumber - Windows  
Cabinets - Siding  
Plywood - Doors  
Vanities - Cement  
Steel Paint - Paneling  
Fencing - Ceiling Tile  
Insulation

OPEN Monday thru Friday 7:30 a.m. to 5:30 p.m.  
Saturday 8:00 a.m. to 12 noon

**Your Hometown Farm  
and Home Discount Store  
Supports the  
Tri-State Band Festival.**



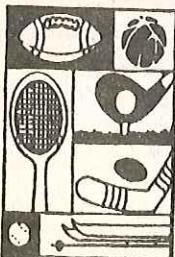
321 W. Hatting, Luverne, MN

507-283-2075

STORE HOURS:

Mon. - Fri. 8 a.m. to 8 p.m.;  
Sat. 8 a.m. to 5 p.m.  
Sun. Noon to 5 p.m.

**FOR ALL YOUR SPORTS EQUIPMENT AND APPAREL, STOP AT**



# Center Sports

316 Tenth Street • Worthington, MN

- Mon.-Thurs. 8:30 a.m. - 6:00 p.m.
- Fri. 8:30 a.m. - 8:00 p.m.
- Sat. 8:30 a.m. - 5:00 p.m.

Centre Mall  
Sioux Center, IA

- Mon. - Fri. 9 a.m. - 9 p.m.
- Mon - Sat. 9a.m. - 5 p.m.





### Sioux Falls, S.D.

The Washington High School Band has appeared in the Tri-State Band Festival multiple times. They will appear in parade and field exercises. The band is directed by Jennifer K. Hawkinson and Kyle Haugen. Drum majors are Courtney Heitkamp, Amy Nachtigal and Ryan Miller. The school enrollment is 2,010.

## LUVERNE COUNTRY CLUB

Located east of Luverne. Take Hwy. 16 east to  
Cty. Rd. 9 south, turn on first left. Clubhouse is  
located on right side.

Golf Carts & Driving Range Available

**CALL 507-283-4383**

*for tee times*

## LUVERNE FAMILY CHIROPRACTIC, P.A.



Dr. Terry Poe

Most Insurance's accepted.

• Specializing in Work & Auto Related Injuries

Open: Monday, Tuesday, Wednesday 9 a.m. - 6 p.m.  
Thursday 1 - 6 p.m.; Friday 9 a.m. - 5 p.m.

109 S. Freeman • Luverne, MN • 507-283-9484

## SHARKEE'S

SPORTS BAR & GRILL



Open Daily at 11:00 a.m. • South Hwy. 75, Luverne

### NOON SPECIALS

Come out and see  
what's new  
on our menus!

Up to 1,200 seating capacity  
on main floor

- Wedding Receptions•
- Anniversaries•
- Class Reunions•
- Family Reunions•
- Sales Meetings•
- Company Functions•







## Brookings, S.D.

Brookings High School Marching Band will once again compete in the Tri-State Band Festival this year. They will compete in both parade and field exercises. The band is directed by Brian LeMaster. Drum majors are Bobbi Wendorff, Erin Sourite and Dan Stratten. School enrollment is 791 students.

## Enjoy the 54th Annual Tri-State Band Festival!

### Ask us about these Programs

- ★ Discount rates for electric heating and air-conditioning
- ★ Low interest loans for heating systems
- ★ Lifetime warranty Marathon water heaters at a huge discount. Free for gas conversion and new construction (Marathon heater program requires the installation of an SVE load control.)



**SIoux VALLEY  
ENERGY**

A Touchstone Energy® Cooperative



Call Us at 1-800-234-1960

## Tri-State Band Festival Button



# SALE

To all customers wearing a Band Festival Button,  
the Luverne Style Shop will discount:

# 10% off

the purchase of any dress, blouse, slack, skirt,  
sweater, purse, hat or knitwear item!

**Sale Good thru Saturday, Sept. 25**

Buy your Band Buttons at the  
Luverne Area Chamber of Commerce Office

## Luverne Style Shop

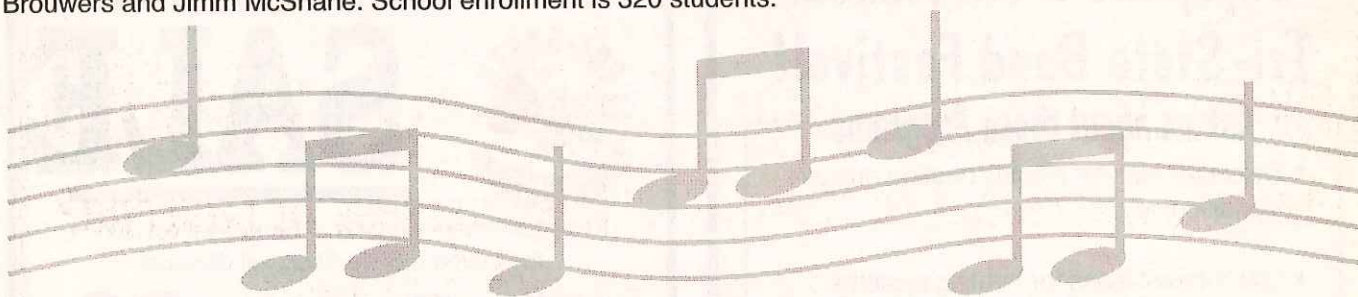
202 East Main Street • Luverne, Minn.





### New Richland, MN

The New Richland-Hartland-Ellendale-Geneva Marching Band is under the directorship of Dave Haugh. This will be the band's 7<sup>th</sup> appearance in the Festival. It will participate in parade competition only. Drum majors are Jessica Brouwers and Jimm McShane. School enrollment is 320 students.



**CITY CENTRE APARTMENTS**



**RENTS REDUCED!**

- Secured entrance system
- Stove, refrigerator & dishwasher included
- Community room, elevator & many floor plans to choose from!

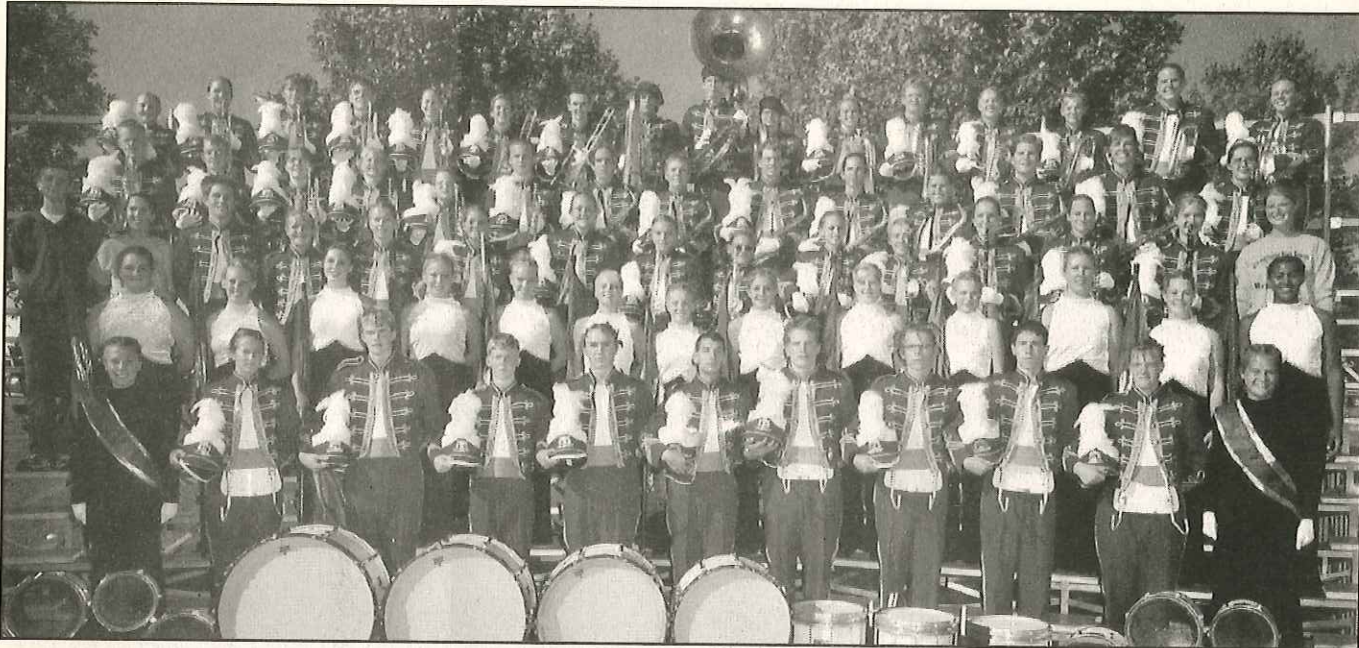
**DUNHAM PROPERTY MANAGEMENT**

**507-449-5879 or 1-800-844-9816**

or Cragoe Realty at 507-283-2647 or (cell) 920-3815

**No Coolers  
Allowed on  
the Field.**





## **Stewartville, MN**

The Stewartville High School Band will appear at the Tri-State Band Festival for the first time this year. They will participate in both parade and field exercises. Jessica Tloughan is the director. Drum majors are Tricia Fredricksen and Sarah Christie. School enrollment is 520.



***Are you interested in starting a new business in Luverne?***

There are several programs & funding opportunities available.

# **Luverne Means Business!**

Contact our Economic Development Office

203 East Main • Luverne, MN • 507-449-5033

[www.luverneadvantage.com](http://www.luverneadvantage.com)

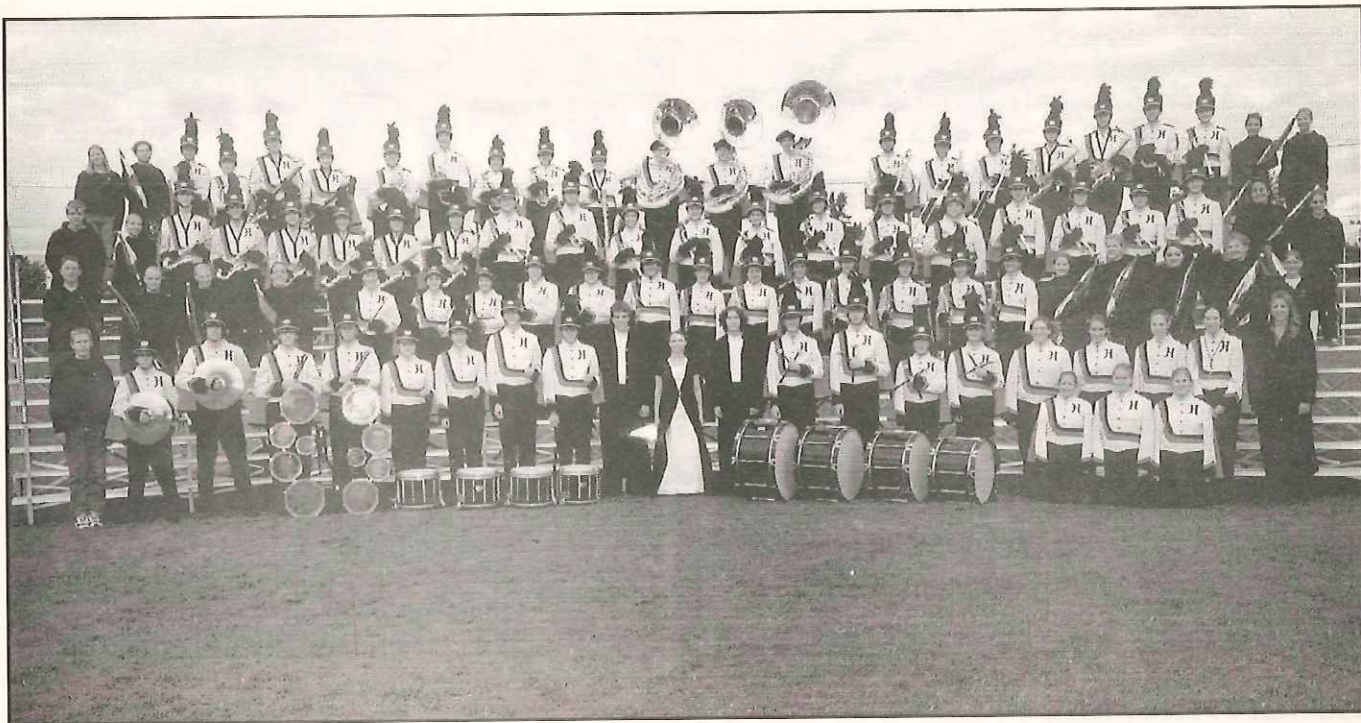
*Spec Homes  
Welcome*

*Visit Our  
Website*

## **Residential Lots for Sale**

## **Evergreen Additions & Sybesma Addition**





## Huron, S.D.

Huron Tiger Marching Band is competing in the Tri-State Band Festival for the 6<sup>th</sup> time this year. The band is under the directorship of Jennifer Brown. Drum majors are Jacqueline Langland, Tori Bjorke and Alex Wollman. High school enrollment is 755 students.

## Glow Bowling Friday Night & Saturday Night

8:30 - 10:30 p.m. 11:00 p.m. - 1:30 a.m.

**Come Try Our Touch Tune  
Sound System**

**Pizza • Hamburgers  
• Hot Dogs • Chicken Strips**

# Valley Lanes & Rec Center

900 N. Splitrock Blvd.  
Brandon, S.D.  
605-582-7003



## THE COFFEY HAUS

111 East Main, Luverne • 507-283-8676

Open Monday-Friday 8 a.m. to 3 p.m., Saturday 9 a.m. to 1 p.m.

DINE-IN • CARRY-OUT • CATERING • SPECIAL OCCASIONS • PARTIES

HausMade	Sandwiches	Specialty Coffees
Soups	Pastries	& Teas
Salads	Breads	Espresso Drinks



808 Main St., Edgerton • 507-442-7321

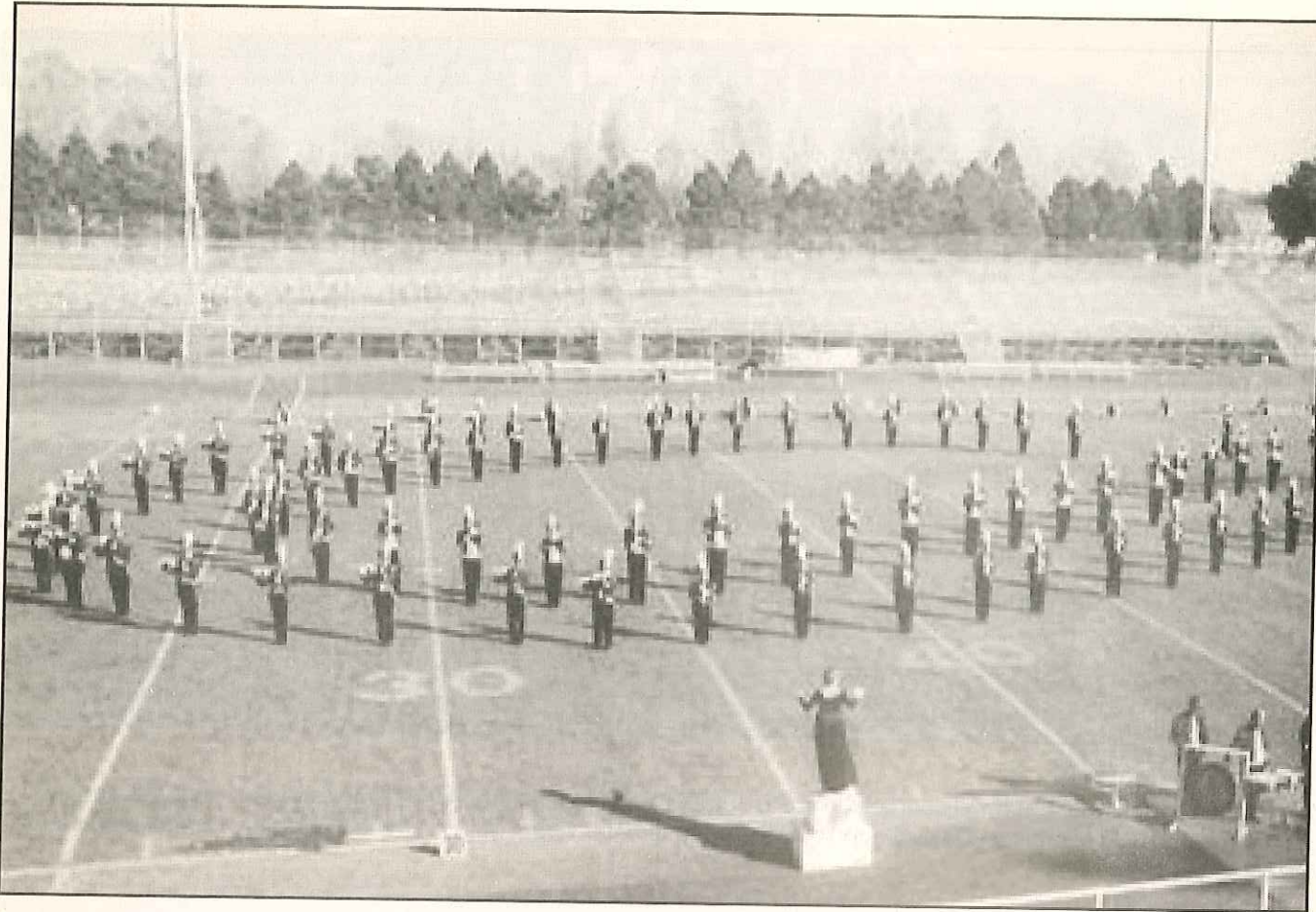
Open Monday-Saturday 7 a.m. to 5:30 p.m., Wednesday 7 a.m. to 9 p.m.

For the "best", "freshest", "home town" pastry & bakery items in the area.

Breads	Candy	Party Breads	Pies
Rolls	Cookies	Bars	Cakes
Buns	Almond Patties		

Bakery items delivered to the Coffey Haus Mondays, Wednesdays and Fridays. Call a day ahead of delivery days to ensure your choices or special orders.





### Aberdeen, S.D.

The Central High School Band, Aberdeen, S.D., will participate in the Tri-State Band Festival after an absence of many years. They are entered in field exercises only. Band directors are Jerry Letcher, Dennis McDermott and Jim Panerio. Color guard director is Jessica Perkins. Katie Koester and Kevin Kelly are the drum majors. School enrollment is 1,200.



**FOOD SHOP**

915 S. Kniss, Luverne  
507-283-4162

NEW - Diesel

Gift Shop



**TRI-STATE  
BAND FESTIVAL**

LUVERNE, MN  
54<sup>TH</sup> ANNUAL  
SEPTEMBER 25, 2004

**Buy a  
Band  
Button!**

\$3 in advance or  
\$4 Band Fest Day





## Hastings, MN

Hastings High School Band will compete in the Tri-State Band Festival for the first time this year. They will compete in parade and field exercises. Emily Chandler is the band director. Drum Major is Austin Wellman. School enrollment is 1,800 students.



# Take a Friend to College!

Take along a little of home when you're away from home.

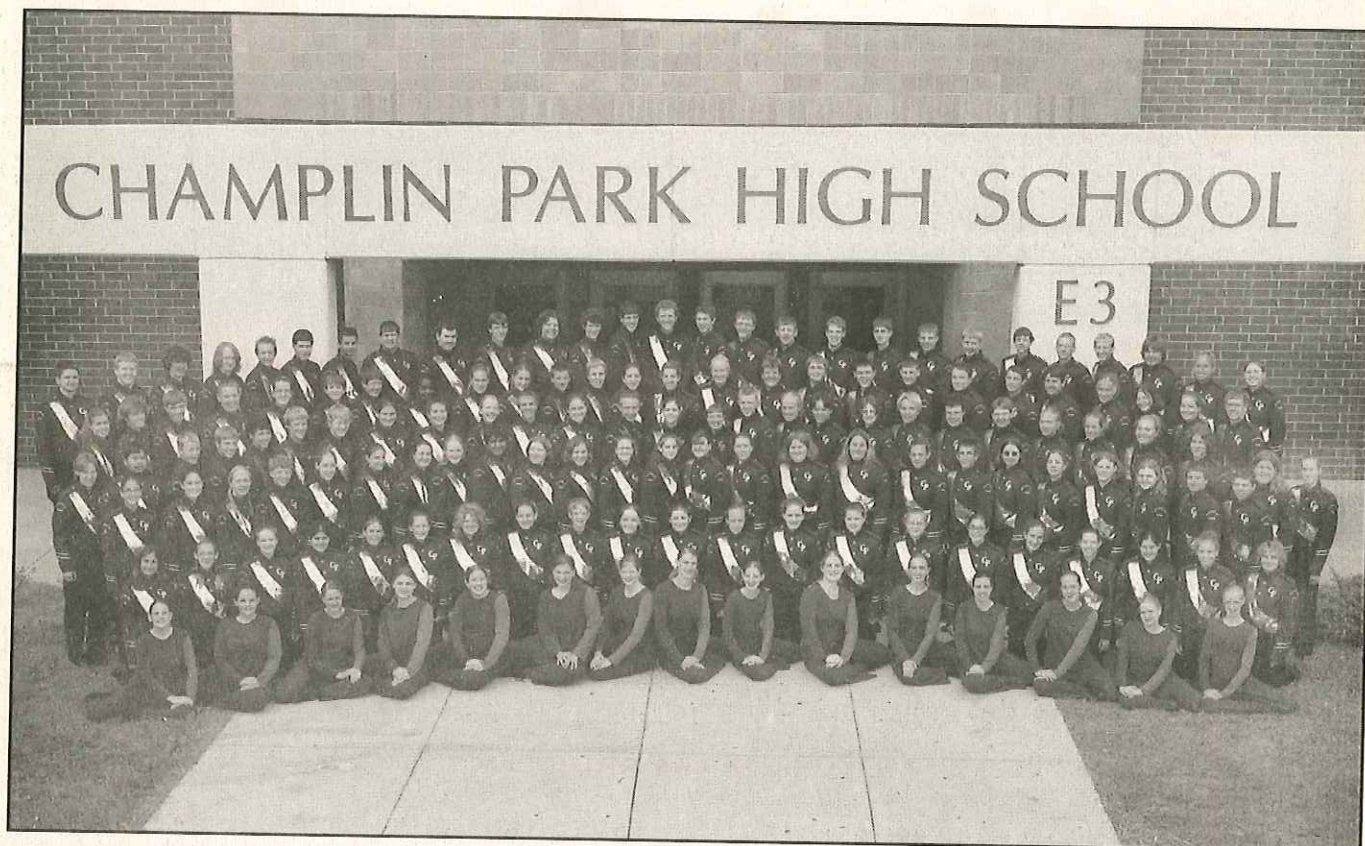
Subscribe to the *Star Herald* and keep in touch with the local and county news of friends, family and community.

There's no better way to brighten a school day!

**Our special student rate is only \$38.00 for 9 months**

Student's name \_\_\_\_\_  
 Name of college \_\_\_\_\_  
 College mailing address \_\_\_\_\_  
 City \_\_\_\_\_ State \_\_\_\_\_ Zip \_\_\_\_\_  
 Date school starts \_\_\_\_\_  
 Please include payment of \$38.00 and send to:  
**Rock County Star Herald**  
 P.O. Box 837 • Luverne, MN • 56156-0837





### Champlin, MN

The Champlin Park High School is participating in the Tri-State Band Festival for the second time. They will be in both parade and field exercises. The band is under the direction of Steven Lyons and Dan Grivna. Jamie Murphy, Derek Dinzl and Mara Grivna are drum majors. No photo was available at the time

**PUT IT  
IN  
PRINT**

•Letterheads

•Envelopes

•Business Cards

•Business Forms

•Carbonless Forms

•Computer Forms

•Statements

•Invoices

No job too big  
or too small!

Free estimates!

Whatever your needs,  
ask us first!

**ANNOUNCER  
PRINTING**

117 West Main, Luverne  
507-283-2333

**Thank you** to the featured advertisers on these pages.  
Because of them and their financial support, it was possible to present  
the 2004 Tri-State Band Festival information.

*The official Tri-State Band Festival program is a featured publication  
of Tollefson Publishing, Luverne, Minnesota.*



# Celebrate 9 on 90!

We have been at our I-90 Location for 9 Years, and we hope you will help us celebrate throughout the entire month of September. Since September is the 9th month, we like to think of this as our

## "Golden Anniversary"

Buy a vehicle and we'll  
Wine and Dine you  
at one of Luverne's finest restaurants.

Feel Fine  
when you get your oil changed for only \$19.99.

If your vehicle feels out of Line,  
come in to save \$9  
on an alignment.

Make your vehicle Shine  
with an "Express Detailing" for only \$24.99.

Sink a putt on the 9th green and win a prize!



**Papik**  
MOTORS  
I-90 LUVERNE

 **PONTIAC** Fuel for the Soul  **Chevrolet**  **Jeep**

 **GMC**  **DODGE**  **BUICK**

**AN AMERICAN REVOLUTION**

507-283-9171 • 1-800-634-7701  
[www.papik.com](http://www.papik.com)



# 54 Years of Marching Band Excellence



**Luverne**  
AREA CHAMBER OF COMMERCE

*"Where The Buffalo Still Roam"*



102 East Main • Luverne, MN 56156-1831  
Phone/Fax 507-283-4061 or 1-888-283-4061 • E-mail: [luvernechamber@iw.net](mailto:luvernechamber@iw.net)







Athletic Field

High School

# 2004 Tri-State Band Festival Parade Route Luverne, Minnesota

Estey

Freeman

Cedar

McKenzie

Spring

Oakley

Blue Mound

Main Street

Maple St

Warren

Railroad

SHARKEES

Armory



Parade Route

Judging Area



