

Luverne Minnesota

Welcomes You

to the



PARADE

10:00 a.m. Main Street

FIELD

1:00 p.m. LHS Athletic Field

\$2.00

Welcome

to the

48th Annual Tri-State Band Festival

The Tri-State Band Festival is a special time for the people of Luverne. Each year we look forward to hosting the multitude of festival fans that congregate in our city.

This year, the 48th Annual Tri-State Band Festival brings together 27 high school marching bands from the far corners of Minnesota, Iowa, and South Dakota for a day of spirited competition. We are also proud to host the **Brassworks** as our guest band.

The City of Luverne and the Band Festival Committee extend a warm welcome to all band members, band parents, and everyone who participates in and supports the Tri-State Band Festival. Enjoy the day!

Brassworks

In the five years since **Brassworks** was formed, they have performed in three states in front of over 600,000 people. The first few years of their existence was devoted exclusively to parade performances. But, in the past few years, **Brassworks** has expanded its range and evolved as the most versatile and entertaining all-brass ensemble in the Midwest.

Unique in make-up and mission, **Brassworks** is organized as a non-profit corporation. All proceeds from their performances go back into the organization for instruments, uniforms, and the like. Their primary goal is to entertain and have fun. However, it is very important to them to promote instrumental music and music education.

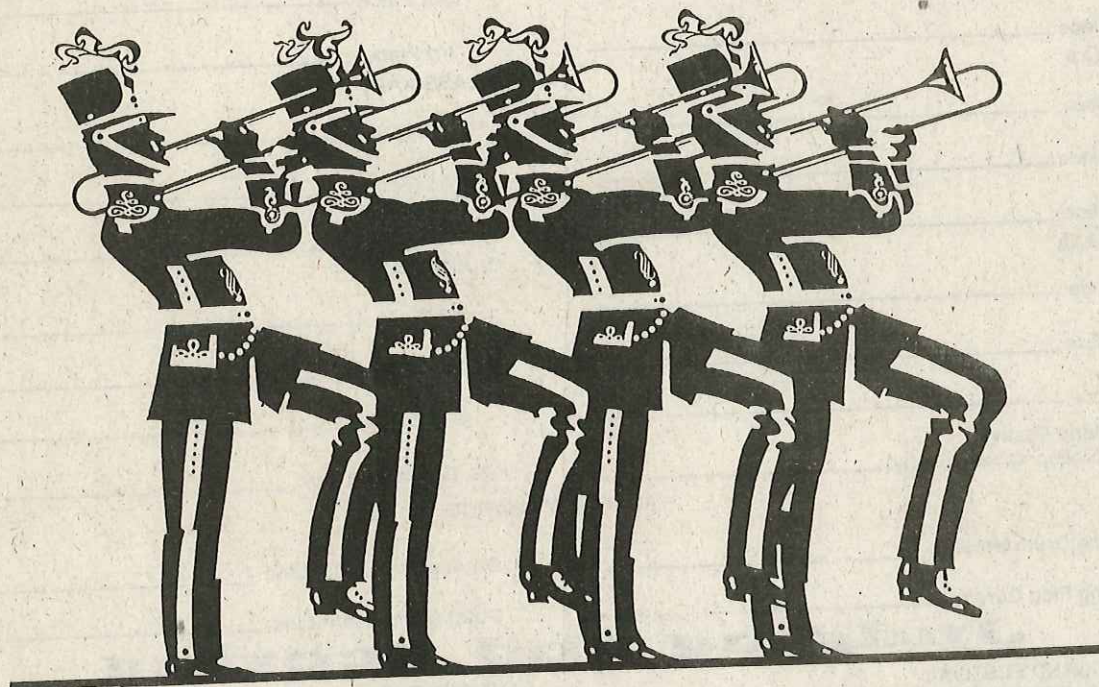
The **Brassworks** membership consists of talented individuals from ages nineteen to thirty-seven who love to play great arrangements of great music. In fact, four members are currently band directors, while a number of others are studying music. Not lost in this is the fact that many of their members have "normal jobs" but prove that one can still have fun playing their horn long after they get out of school.

Brassworks rehearses one evening a week in preparation for performances. In addition to the Tri-State Band Festival, **Brassworks** will make guest appearances with a number of high school bands. **Brassworks** has also produced a two-hour show which they will perform in a number of cities throughout the next year.

This past summer, **Brassworks** released their first recording called, "Gimme The Works!" As for **Brassworks**, this recording was a major financial and artistic risk for the organization. However, it seems as though the risk has paid off. Response to the recording has been outstanding. So much so, that plans are in the works for number 2. A quick look down the song list reveals one reason why. There is everything here from jazz, to rock, to swing, to light classical, to soundtracks. All played like only **Brassworks** can play it.

Brassworks is very proud to have the opportunity to perform at the Tri-State Band Festival. In fact, many members are very familiar with the festival after having competed here either as members of bands or as staff members. Good luck to everyone today and remember to have fun!

48th Annual Tri-State Band Festival



September 26, 1997
Luverne, Minnesota

• PARADE •

Luverne
Main Street
Begins at 10:00 a.m.

• FIELD •

Luverne High School
Athletic Field
Begins at 1:00 p.m.

***Listed in Top 25 Festivals & Events
in Minnesota!***

A production of Tollefson Publishing
Luverne, MN

Finals Score Sheet

PARADE WINNERS

CLASS A

1st Place _____

2nd Place _____

3rd Place _____

CLASS AA

1st Place _____

2nd Place _____

3rd Place _____

CLASS AAA

1st Place _____

2nd Place _____

3rd Place _____

CLASS AAAA

1st Place _____

2nd Place _____

3rd Place _____

Tri-State Band Festival

Traveling Sweepstakes Trophy _____

FIELD WINNERS

CLASS A

1st Place _____

2nd Place _____

3rd Place _____

CLASS AA

1st Place _____

2nd Place _____

3rd Place _____

CLASS AAA

1st Place _____

2nd Place _____

3rd Place _____

CLASS AAAA

1st Place _____

2nd Place _____

3rd Place _____

K.M. GETMAN Award _____

AUXILIARY AWARDS:

Outstanding Drum Major _____

Outstanding Drum Line _____

Outstanding Flag Corps _____

Outstanding Horn Line _____

Judging and Scoring

TRI-STATE BAND FESTIVAL

TRAVELING SWEEPSTAKES TROPHY

This trophy is awarded for the band with top points over all. The winning band also receives a plaque. A band must win this trophy 3 consecutive years to retain it permanently. All winners will retain the plaque.

K.M. GETMAN ORIGINATORS AWARD

This award will be a special award made to the band which, throughout their Tri-State Band Festival participation, best exhibits the pride, spirit, enthusiasm, friendliness and unity of high school marching bandmen. In 1951 Ken Getman and other originators of the festival saw a need for an educational opportunity for bands to share ideas and see one another perform. This award commemorates the past ideas and future hopes of the Tri-State Band Festival. Judging for this award will be done by members of the Tri-State Band Festival Committee who have worked with and observed bands the entire day. The winner of the K.M. Getman receives a plaque.

SPECIAL UNIT AWARDS

Auxiliary Unit Plaques will be awarded in field competition to the top band in each category for drum major, flag corps, drum line and horn line. These plaques will be given in addition to the regular awards.

PARTICIPATION

All bands that participate win place trophies. Trophies given after field competition.

ADJUDICATION

There are 6 judges evaluating each band: 1 Music Execution Judge; 1 Marching General Effect Judge; 1 Marching Execution Judge, Timing and Penalties Judge - field only; 1 Music General Effect Judge; 1 Percussion-Execution & Analysis Judge; 1 Auxiliary Judge. All judges, whether execution or general effect, shall work on a build-up scoring system.

SCORING SYSTEM

Point allotment:

20 Points: Music-Execution

20 Points: Marching-General Effect

20 Points: Marching-Execution

20 Points: Music-General Effect

10 Points: Percussion-Execution & Analysis

10 Points: Auxiliary

The Tri-State Band Festival is sanctioned by the appropriate musical agencies in all states involved. It is also approved by the National Association of Secondary School Principals (NASSP) for their 1998-99 Advisory List of Contests and Activities.

Spacing of bands during the parade is required for judging purposes.

Minnegasco®

1998 parade marshal grew up with festival

'It's my second favorite day of the year. It's second only to Christmas'

By Carole Olson



The 1998 Parade Marshal, Janine Jordahl Papik, is a lifelong lover of the Tri-State Band Festival. "The festival started in 1951. It's easy to remember because that's the year I was born. I'm sure I was at that first band festival, held by my mom. I've gone every year. I grew up just loving it, and I haven't changed. They couldn't keep me away."

It's probably impossible to know whether the festival shaped Janine's interest in music or if because she is so musically inclined, the festival and its pageantry have always been special to her. The festival has been a continuing, joyous part of her life from childhood up to her time as a parent and festival committee member.

"I've always loved marching bands and music," she said. "The fact all these kids and their families are coming from three states shows what kids are about when they pull together and work. It's such a good community event."

Photo by Carole Olson

1998 Tri-State Band Festival Parade Marshal Janine Papik has loved music her entire life. Particularly, she grew up as an avid fan of the band festival, and even led the Magnolia Marching band when she instructed there. "This is a real honor" she said about being this year's parade marshal. "It means more to me than almost anything."

She grew up watching the
Parade marshal/See page 4

Parade marshal/Continued from Page 3

young musicians and waiting to be part of the big day. She joined band and took baton twirling lessons so she could be a majorette in the band. After graduation from high school, she majored in music at Mankato State.

When she and her husband, Gary, returned to live in Luverne, she worked as a teacher and director of the Magnolia High School Band. Despite the fact the band hadn't done much marching, other than at football games, she wrote a program for them, and they participated in The Tri-State Band Festival in both the parade and field

"The fact all these kids and their families are coming from three states shows what kids are about when they pull together and work. It's such a good community event."

Janine Papik,
1998 parade marshal

competitions. "We received a participation trophy, and if there had been an award for the smallest school, we would have won," she said, smiling.

Janine has served on the festival committee at different times. With all of the varied jobs that make the festival run smoothly, she made sure that her

duties allowed her to watch the parade and field events. In essence she told the committee assigning tasks, "I'll work, but don't give me a job that will make me miss the events. I like to watch every band in the parade and on the field, and I don't like to miss anything."

As a parent she has en-

couraged and accompanied three young musicians, Heidi, Gretchen and Jordan, in their many musical interests. In addition to vocal events and their many years participating in a violin group called "The Grace Notes," Heidi and Gretchen both played instruments and served as drum majors in the band. Heidi went on to be part of the South Dakota State University Band that performed as guest band at the festival. Sophomore son Jordan is a trumpet player in the band this year.

As far as being parade marshal, Janine said, "When Pam Haakenson



BAND FESTIVAL SPECIAL

25% OFF

Any One Item

New Fall Fashions or Shoes

If item is currently sale priced, we will give you the larger discount for best savings.

Coupon good Saturday, Sept. 26 only. Excludes Red Wing boots & Easy Spirit Shoes

- No tax on clothing or shoes -

COOK'S

- CLOTHING FOR MEN
- LADIES WEAR
- MEN'S/LADIES SHOES

217 EAST MAIN STREET • LUVERNE, MN • 507-283-8224



Parade marshal/Continued from page 4

asked me, I was absolutely surprised and humbled by it." She said she really feels more comfortable on the sidelines, as accompanist for musical groups and as a worker along the parade route, rather than leading the parade, but she added, "This is a real honor. It means more to me than almost anything."

"For me it's my second favorite day of the year. It's second only to Christmas. When you ask, 'What do you like about it?' it's like asking, 'What do you like about Christmas?'"

Janine said it's like she can see bits of the festival all through the years, the

fall season in all its variations: hot, cold, rainy, snowy and clear. She sees the changing styles of uniforms, the twirlers, auxiliary units and all their different costumes and accessories, the drum majors, the styles of directors, the field shows and their increasing levels of difficulty and dif-

ferent themes.

What makes it all most amazing to her is knowing that the participants are high school kids who have committed themselves to long hours of demanding practice to do their best for themselves, for their schools and for their communities.

WELCOME TO LUVERNE'S 48TH ANNUAL TRI-STATE BAND FESTIVAL



The BRASSWORKS band from the Midwest

In the five years since BRASSWORKS was formed, they have performed in three states in front of over 600,000 people. The first few years of their existence was devoted exclusively to parade performances. But, in the past few years, BRASSWORKS has expanded its range and evolved as the most versatile and entertaining all-brass ensemble in the Midwest.

Unique in make-up and mission, BRASSWORKS is organized as a non-profit corporation. All proceeds from their performances go back into the organization for instruments, uniforms, and the like. Their primary goal is to entertain and have fun. However, it is very important to them to promote instrumental music and music education.

The BRASSWORKS membership consists of talented individuals from ages nineteen to thirty-seven who love to play great arrangements of great music. In fact, four members are currently band directors, while a number of others are studying music. Not lost in this is the fact that many of their members have "normal jobs" but prove that one can still have fun playing their horn long after they get out of school.

BRASSWORKS is very proud to have the opportunity to perform at the Tri-State Band Festival. In fact, many members are very familiar with the festival after having competed here either as members of bands or as staff members. Good luck to everyone today and remember to have fun!



MINNWEST BANK GROUP

Luverne, MN

507-283-2366

Member F.D.I.C.

116 East Main Street

Introducing the Band Festival judges...

The Tri-State Judging Association was formed eight years ago by Tom Haugen to provide quality judging for the parade and field bands in the Tri-state area. This past year the group provided adjudication for more than 40 parade and field show competitions. Haugen draws from a pool of 25 professionals, all of whom have had success in the marching area. This year's team brings with them a total of 145 years' experience in the marching band field.

Today's judges are...

Tom Haugen

Tom Haugen, Alexandria, will judge marching execution.

Haugen retired on June 1 after 37 years of teaching at the high school level. He is presently teaching short term at the University of Minnesota - Morris in the instrumental department. His marching band at Jefferson High School appeared in the 1998 Tournament of Roses Parade in

Pasadena, Calif., and his bands at Luverne, and Cresco, Iowa, were former Tri-State Band Festival Sweepstakes winners.

Richard Dufault

Richard Dufault, Waseca, will judge music execution.

Dufault recently retired from teaching in the Waseca schools where he developed the Waseca band program into one of Minnesota's finest. His Waseca marching

band won numerous sweepstakes awards at the Tri-State Band Festival from 1980 through 1993. Dufault is in constant demand as an evaluator and clinician throughout the Midwest.

David Young

David Young, Bellevue, Neb., will judge marching and maneuvering general effect.

Young was the band director at Bellevue East High School for 25 years where he developed one of the finest marching programs in Nebraska. In 1996 his band was the sweepstakes winner at the prestigious Mid-Iowa Band Championship in Ankeny, Iowa. Young is now a noted drill and music writer for many of the bands in the Omaha and Lincoln, Neb., areas.

sota. From 1993 through 1996 Goldsmith's band was undefeated in parade and field competition.

Ken Martinson

Ken Martinson, Nashville, Tenn., will judge guard.

Martinson has worked with numerous color guards throughout the Midwest. He was the guard specialist for the Jefferson High School marching band for 10 years and was the force behind the Vikingland Band Festival in Alexandria, helping develop it into Minnesota's premier summer marching band event. He now resides in Nashville where his web site, MARCHING.COM, is the information resource for parade and field competitions throughout the United States.

Barry Peterson

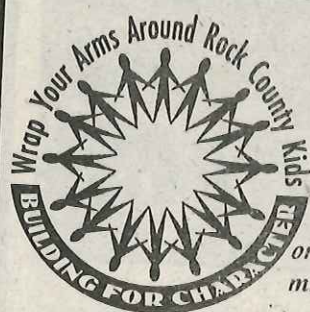
Barry Peterson, Eagan, will judge percussion.

Peterson teaches in the Eagan school system where he has developed one of the finest drum lines in the state. This past year, his drum line at Eagan High School was the Winter Drum Line champion. Peterson is also drum line instructor of Jefferson High School marching band, Alexandria.

Jeff Goldsmith

Jeff Goldsmith, Burnsville, will judge music general effect.

Goldsmith is presently the band director at Burnsville High School. He previously taught at Irondale High School where his Irondale marching band became the driving force behind the re-birth of the parade and field bands in the state of Minne-



Asset Building

Music - Asset #13

Kids are involved in band, orchestra, or choirs or they take music lessons. They practice one or more hours a week.

48% of HBC and Luverne youth we surveyed have this asset in their lives.

At Home? Show your support by attending your children's performances.

At School: Have a school talent show. Encourage soloists, groups and garage bands to participate.

In the Community: Sponsor youth bands, orchestras and singing groups. Provide a place to practice.

In the Congregation: Encourage adults in the congregation to offer free music lessons to young people as a ministry.

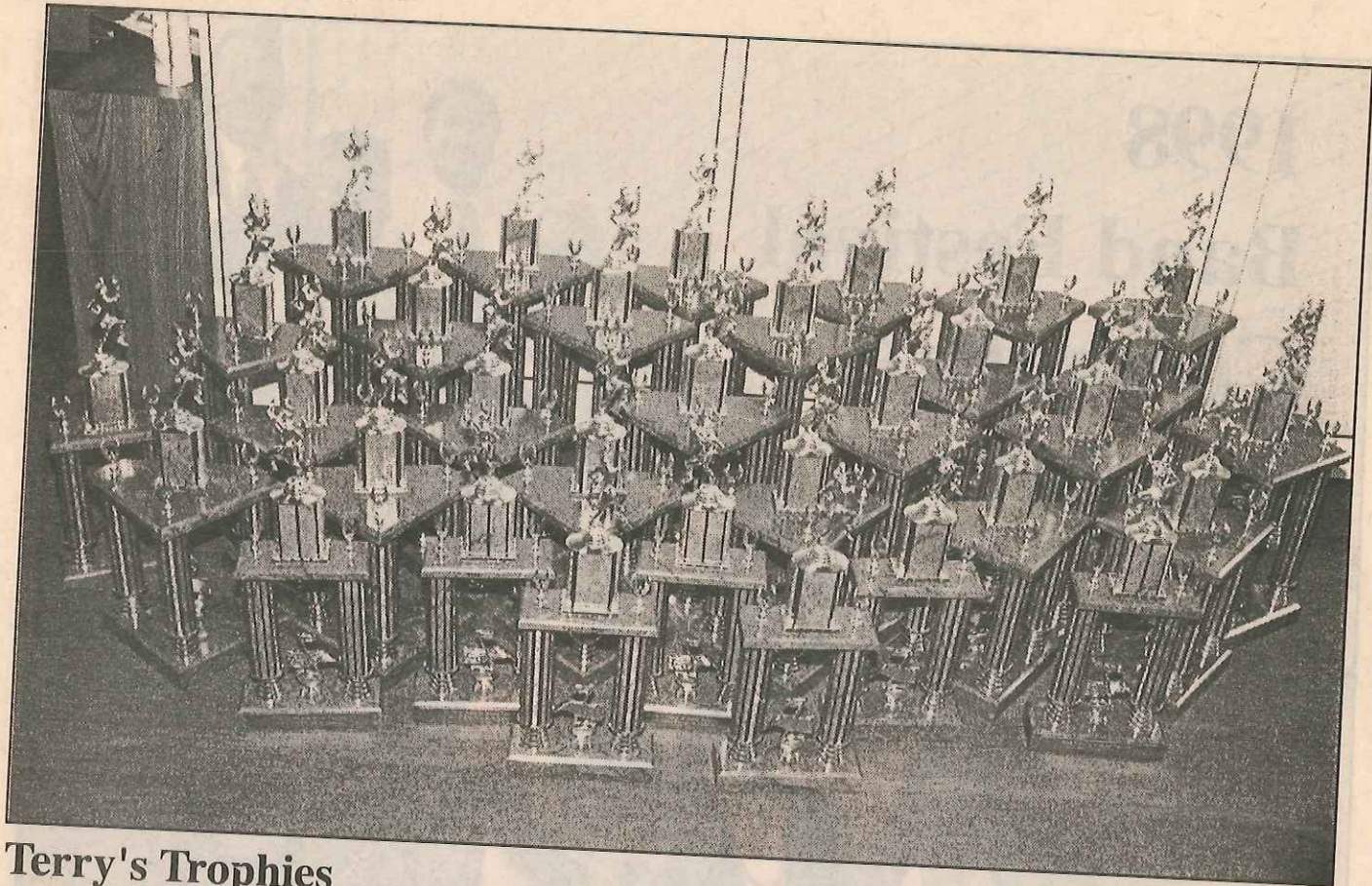
*Congratulations to all participants from:
The Rock County Family Coordinating Council
Strengthening The Family Grant, Southwest MN Foundation*

1998 Band Festival Committee members



Photo by Carole Olson

Planners for the 1998 Tri-State Band Festival meet regularly throughout the year, but the month of September is the time when committee members swing into action. Committee members include (bottom to top, from left) Paula Thielbar, Kim Boysen, Darla Fransen, Norma DeJongh, Linda Wenzel, Marcia Bork, Terrie Gulden, Jim Boeve, (center) Lona Klosterbuer, Margaret Cook, Bill Stegemann, Glenda Bremer, Dianne Ossenfort, Mike Haakenson, Craig Boysen, (front) Dale Nelson, Pam Haakenson and Dave Smith. Not pictured are Mary Goheen, Keith Aanenson, Anna Van Batavia and Ben McClure. Bands from around the region will perform in parade and field competition Saturday, Sept. 26.



Terry's Trophies

Terry Reisch, Luverne, assembles all the trophies for the Tri-State Band Festival. Reisch has owned Terry's Trophies in Luverne since May 1995.

Photo by Lori Ehde

**TERRY'S
TROPHIES**

**Trophies & Plaques
Custom Engraving
Free Delivery**

Terry Reisch, owner
211 S. Donaldson
Luverne, MN
507-283-2234

**We supplied & engraved the 1998
Tri-State Band Festival Trophies!**

SO JO'S
Sportswear
and Embroidery

122 W. Main
Pipestone, MN
507-825-2906
Sue Fey
Home 777-4164

•Sweaters • Letter Jackets • Socks
• Nylon Jackets • T-Shirts
• Sweatsuits • Hats
in YOUR school colors!
COMPUTERIZED EMBROIDERY
for teams, parents or individuals!



**PREUSS
Chiropractic Center**

Dr. William L. Preuss

Provider for Araz, Medica, Preferred One,
BCBS & State Health Plans.

Massage Therapy given by Ardath Schmidt

103 E. Main • Luverne, MN • Phone 507-283-2561

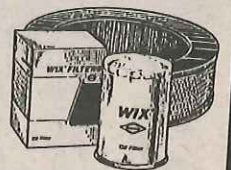
**QUALITY AUTO PARTS
AT LOWER PRICES!**

Featuring:

Quality WIX Filters

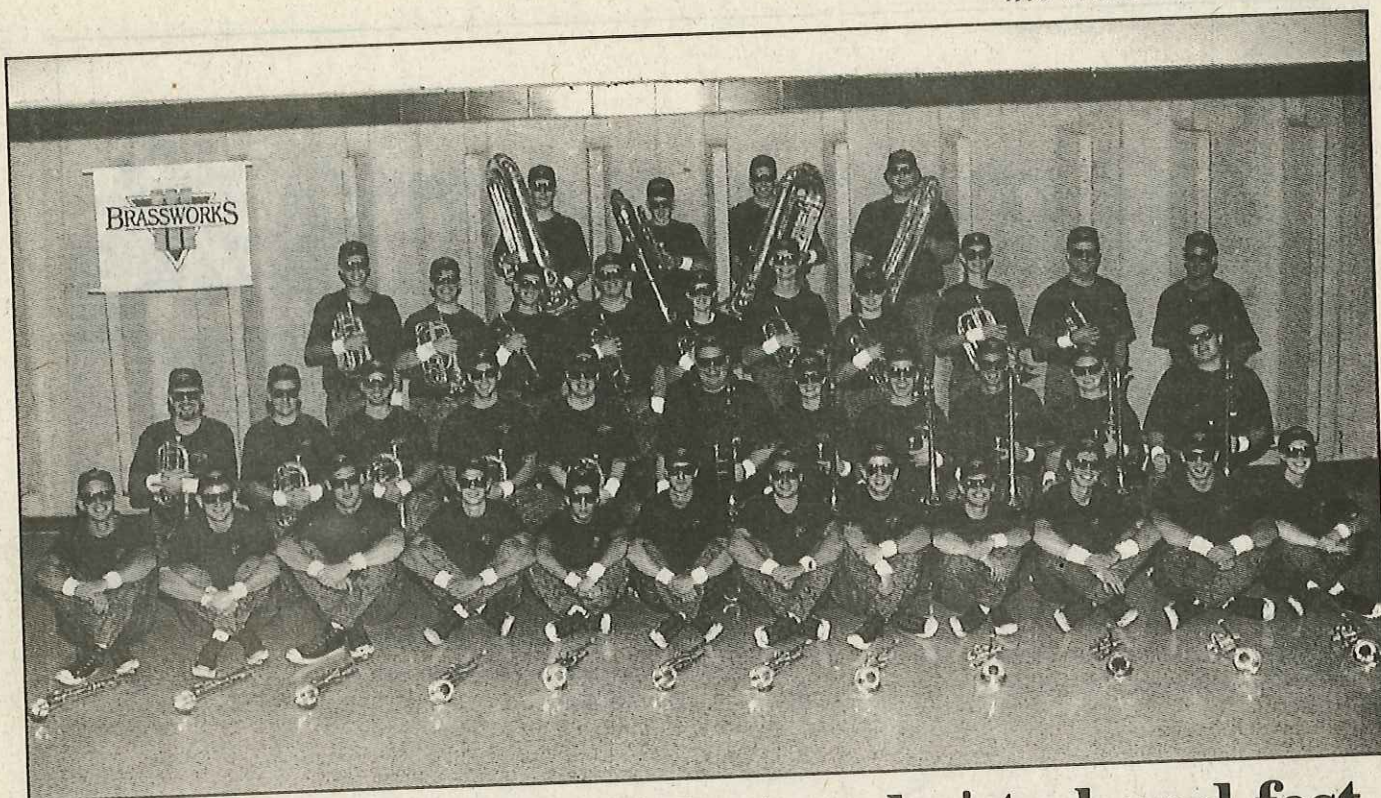
**STURDEVANT'S
AUTO SUPPLY**

505 E. Main • 507-283-2371
LUVERNE



WIX FILTERS

Sturdevant's
since 1912
Steve Popp, Manager



Guest band brings 'the works' to band fest

The Brassworks performs everything from jazz and rock to light classical

In the five years since Brassworks was formed, it has performed in three states in front of more than 600,000 people. The first few years of its existence was devoted exclusively to parade performances.

But, in the past few years, Brassworks has expanded its range and evolved as the most versatile and entertaining all-brass ensemble in the Midwest.

Unique in make-up and mission, Brassworks is organized as a non-profit corporation. All proceeds from their performances go back into the organization for instruments, uniforms, and the like.

entertain and have fun. However, it is very important to them to promote instrumental music and music education.

The Brassworks membership consists of talented individuals from ages 19 to 37 who love to play great arrangements of great music. In fact, four members are currently band directors, while a number of others are studying music.

Not lost in this is the fact that many of their members have "normal jobs" but prove that one can still have fun playing their horn long after they get out of school.

evening a week in preparation for performances. In addition to the Tri-State Band

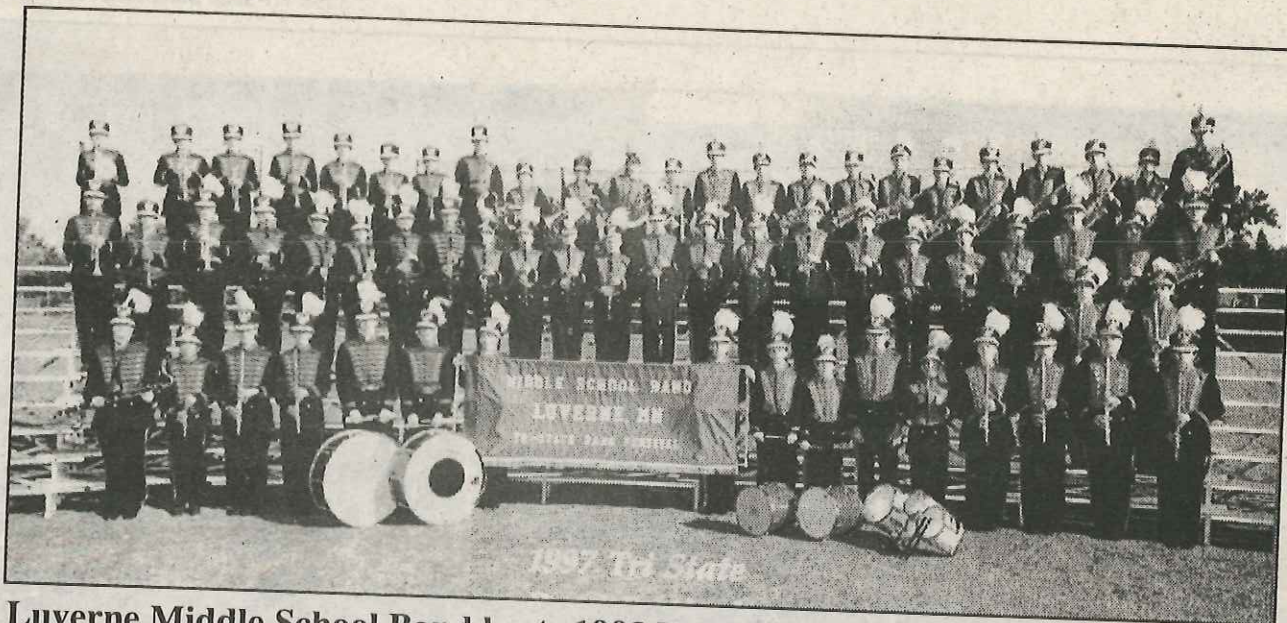
Festival, Brassworks will make guest appearances with a number of high school bands. Brassworks has also produced a two-hour show which it will perform in a number of cities throughout the next year.

This past summer, Brassworks released its first recording called, "Gimme The Works!" For Brassworks, this recording was a major financial and artistic risk for the organization. However, it seems as though the risk has paid off. Response to the recording has been outstanding. So much so, that plans are in the works

for number 2. A quick look down the song list reveals one reason why. There is everything here from jazz to rock to swing to light classical to soundtracks, all played like only Brassworks can play it.

Brassworks is very proud to have the opportunity to perform at the Tri-State Band Festival. In fact, many members are very familiar with the Festival after having competed here either as members of bands or as staff members. Good luck to everyone today and remember to have fun.

For more information about Brassworks, call 1-800-990-7406.



Luverne Middle School Band hosts 1998 Tri-State Band Festival

The host band for the 48th Tri-State Band Festival is the Luverne Middle School Band. The seventh- and eighth-graders in the band will march in the parade. The band is directed by Mary Goheen.

Welcome to the Tri-State Band Festival

For all your insurance needs see
Stacie Remme & Carrie Tunnissen



located in the Minnwest Bank Building

507-283-9586

Welcome to Luverne

from the office of

**Skewes, Klosterbuer
& Vajgrt**

120 N. McKenzie, Luverne, MN

507-283-9111

Tri-State Band Festival Special

**Buy one, get one free
on all drinks.**

Carry out available. Kitchen open 11 a.m. to 10 p.m.

**Scotty's BAR
and GRILL**

South Hwy. 75,
Luverne, Minn

Phone
507-283-9647



**Buy a
Band
Button!**

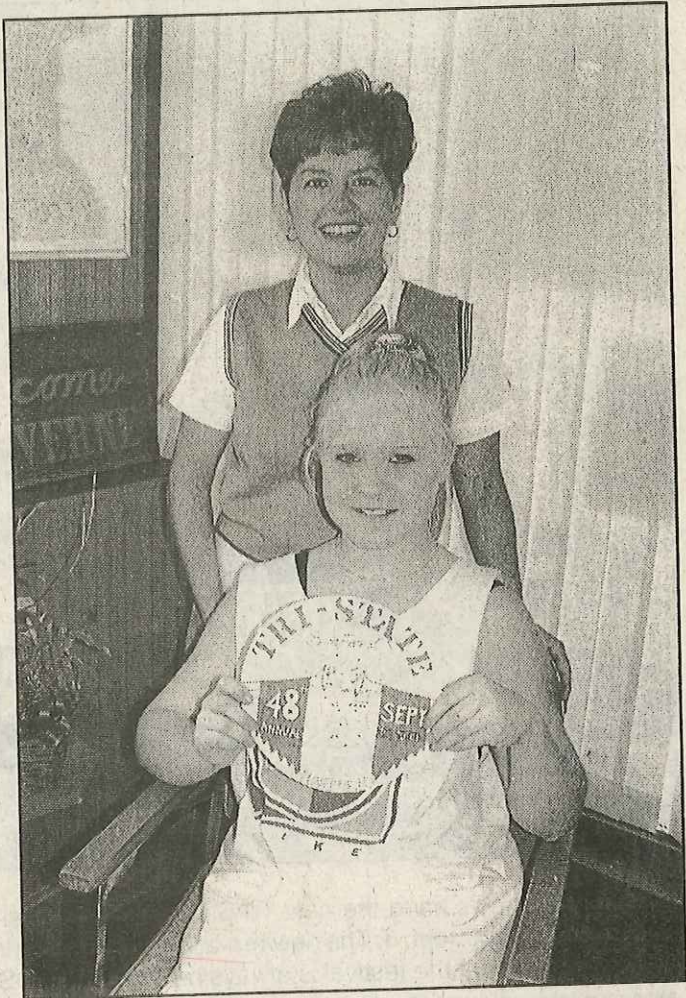
They are \$2 before
the Band Festival and
\$3 on Sat., Sept. 26.



Photo by Carole Olson

Band Festival button

Tami Emery captures the excitement and pageantry of Luverne's 48th annual Tri-State Band Festival in her design for the festival button. Each year, art students at LHS submit their ideas for the button, and the winner is chosen by the Band Festival Committee. She is pictured with Pam Haakenson, chairwoman of the Button Committee. The buttons sales help fund the festival awards and activities.



Custom Floor Covering Sales & Installation **JERRY HOFF** Floor Covering

311 West Dodge • Luverne, MN 56156
Phone 507-283-4543



MINN-I-KOTA VETERINARY CLINIC

Veterinary Care for Large & Small Animals

602 East Main
Luverne, MN 56156

507-283-8507

Dr. Marlen D. Van Otterloo



First Farmers & Merchants

NATIONAL BANK

We believe in you.™
Member FDIC. And the community.

303 East Main Street
Luverne, MN 56156
(507) 283-4463

www.ffmbank.com

107 East Main Street
Pipestone, MN 56164
(507) 825-3301

SOUTHWEST CRISIS CENTER

107 South McKenzie • Luverne, MN
507-283-9917

*Providing advocacy service
to victims of domestic and
sexual abuse.*

24 Hour Crisis Line
1-800-376-4311





Luverne city crews hang the new Tri-State Band Festival banner over Main Street at the Cedar Avenue stoplights Tuesday morning, Sept. 8. The new red-and-white banner includes the band festival logo of marching trombonists, and it reminds fans that the festival is always held on the last Saturday in September.

Photo by Lori Ehde

Welcome Participants and Spectators
to the Tri-State Band Festival

Cash 24 hours a day with our



WHEN...
WHERE...

YOU NEED IT

Advantage

- Available 24 hours at our office in Luverne, located directly across the street from the Comfort Inn.
- Use your card nation-wide where you see the Cirrus symbol.



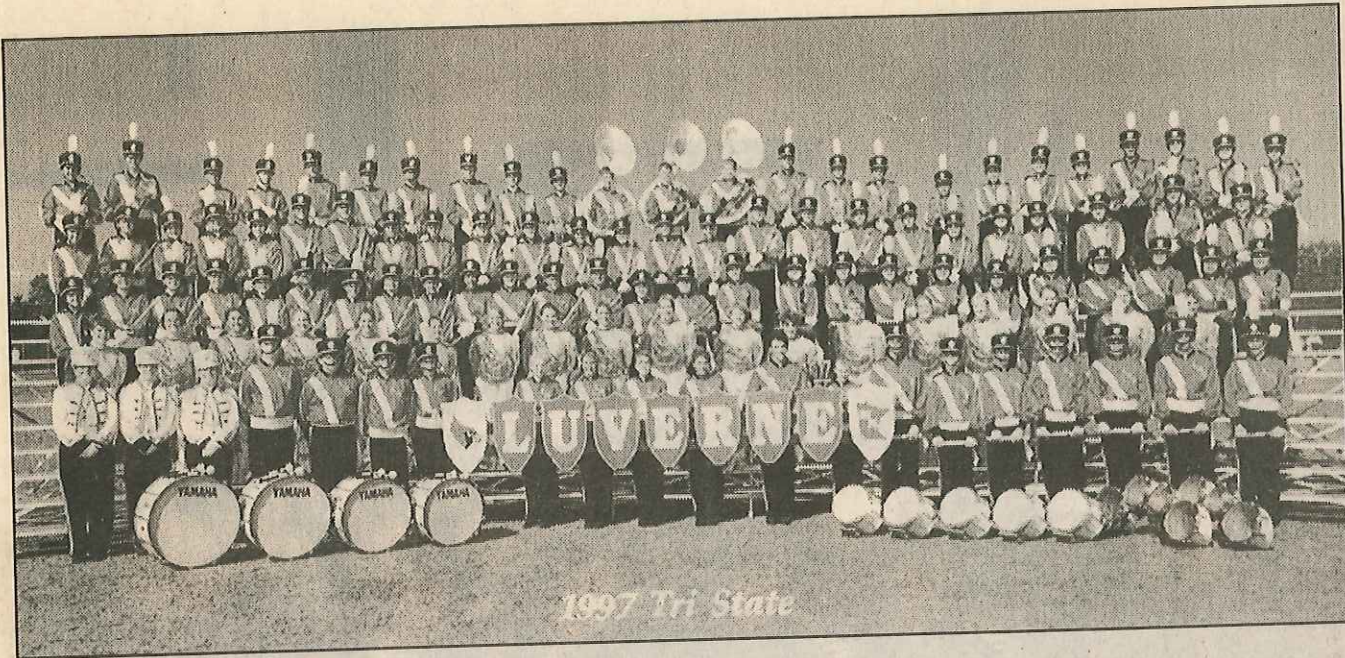
First

NATIONAL BANK AND TRUST

Pipestone • Luverne • Magnolia • Beaver Creek

Financial leadership for Southwest Minnesota

Member FDIC



1997 Tri State

Luverne, MN

The Luverne High School Band is under the direction of Dale Nelson and Mary Goheen. Drum majors are John Cox, Brianne Cronin and Stephanie Rollag. Senior High School enrollment is 446 students.



Herman Motors

Celebrating 66 Years in Luverne

•Fords •Mercurys •Ford Trucks



312 East Main • Luverne, MN
507-283-4427 or 1-888-283-4427

• www.hermanmotor.com

after hours call Joel Herman: 507-283-4148



*If It's Fuel, Tires or
Lubricants, Call Us!*

Phone 507-283-9116

On-The Farm or At-The-Station

ROCK COUNTY CO-OP OIL CO.

Jim Jellema, manager

South Highway 75 • Luverne, MN • Phone 507-283-9116

Buffalo Ridge
INSURANCE

First National Bank Bldg.
South Highway 75
Luverne, MN
Phone 507-283-2381



Marilyn Bloemendaal,
r.p.c.u.



Cory Bloemendaal



Pam Haakenson

Auto
Home
Business
Life
Health
Investment

We hope you enjoy the
47th Annual Tri-State Band Festival!



Adrian, MN

The Adrian High School Marching Dragons Band has performed at the Tri-State Band Festival since its beginning. It will participate in parade only. The band is under the direction of Paul Swick. Melanie Dass is drum majorette. School enrollment is 190 students.

*Where fine craftsmen
produce work with pride!*

Country Cupboards

2 miles south of Luverne, MN on Highway 75

507-283-8176

**Enjoy the 48th Annual
Tri-State Band Festival!**

bis Berkley
Information
Services

10 Roundwind Road, Luverne, MN
Phone 507-283-9195 • FAX 283-2627



Roger Achterhof



Paul Alink

FGL Commodity Services

106 East Main, Luverne, Minnesota 56156
Phone 507-283-9101

W & W Welding & Machine

204 West Hatting

Luverne, Minnesota



Farm welding, portable
welding, millwork,
brazing, cutting lathe
work, custom built
trailers, stock point for
oxygen and acetylene.

- 24 Hour Service -

Shop Phone
507-283-2260

Dean Wenzel
owner

Home Phone
507-283-2528



Ellsworth, MN

Ellsworth Public School band is in its fourth year of marching and will appear in parade only. The band is under the direction of Jodi Ackerman. Drum major is Julie Pommer. School enrollment is 59 students.

The Historic **PALACE** THEATRE

104 East Main Street • Luverne, Minnesota 56156
(507) 283-8526



109 E. Main St., Luverne, MN
Rosalie Baumgard, owner/stylist

Phone: 507-283-2052

Toll Free: 1-800-950-4407

FRIDAYS

Haircuts
\$9.75

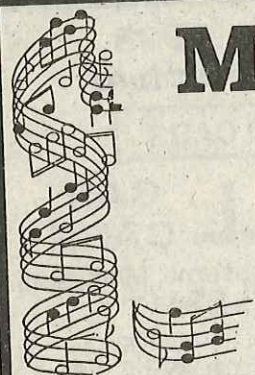
SATURDAYS

Shampoo/Set
\$9.75

MANITOU CARPETS

Welcomes Tri-State Musicians!!

Manitou Carpets
113 West Main, Luverne
507-283-9206





George, IA

The George-Little Rock Community School Marching Band is directed by Glen Kruger. The band will appear in parade only. This will be its second appearance in the Festival. Drum majors are Crystal Popkes and Maggie Janssen. School enrollment is 161 students.

Enjoy Great Music
AND Great SAVINGS



SAVE UP TO \$8.99 WITH THIS COUPON!

Enjoy Your Favorite Toppings
LARGE TWO-TOPPING PIZZA
Get a Second, just 7.00 more
8.99

Offer good with this coupon, through Oct 7, 1998.
Not valid with any other coupon or special offer.

SAVE UP TO \$3.50 WITH THIS COUPON!

Enjoy a **JUMBO**
PEPPERONI PIZZA
Your Classic Favorite!
10.99

Offer good with this coupon, through Oct 7, 1998.
Not valid with any other coupon or special offer.

For Convenient
Delivery Call
283-8680
Limited Delivery Area
South Kniss @ the Interstate
Luverne

We accept Visa, Discover & MasterCard

**Godfather's
Pizza.**



For all of your Houseware,
Appliance and Hardware Needs

Just Ask CELLULARONE®
RENTAL

Tru-Test Paints with Computerized Color Matching

Luverne True Value

S. Hwy. 75, Luverne, MN 507-283-8068

MOST MAJOR CREDIT CARDS ACCEPTED

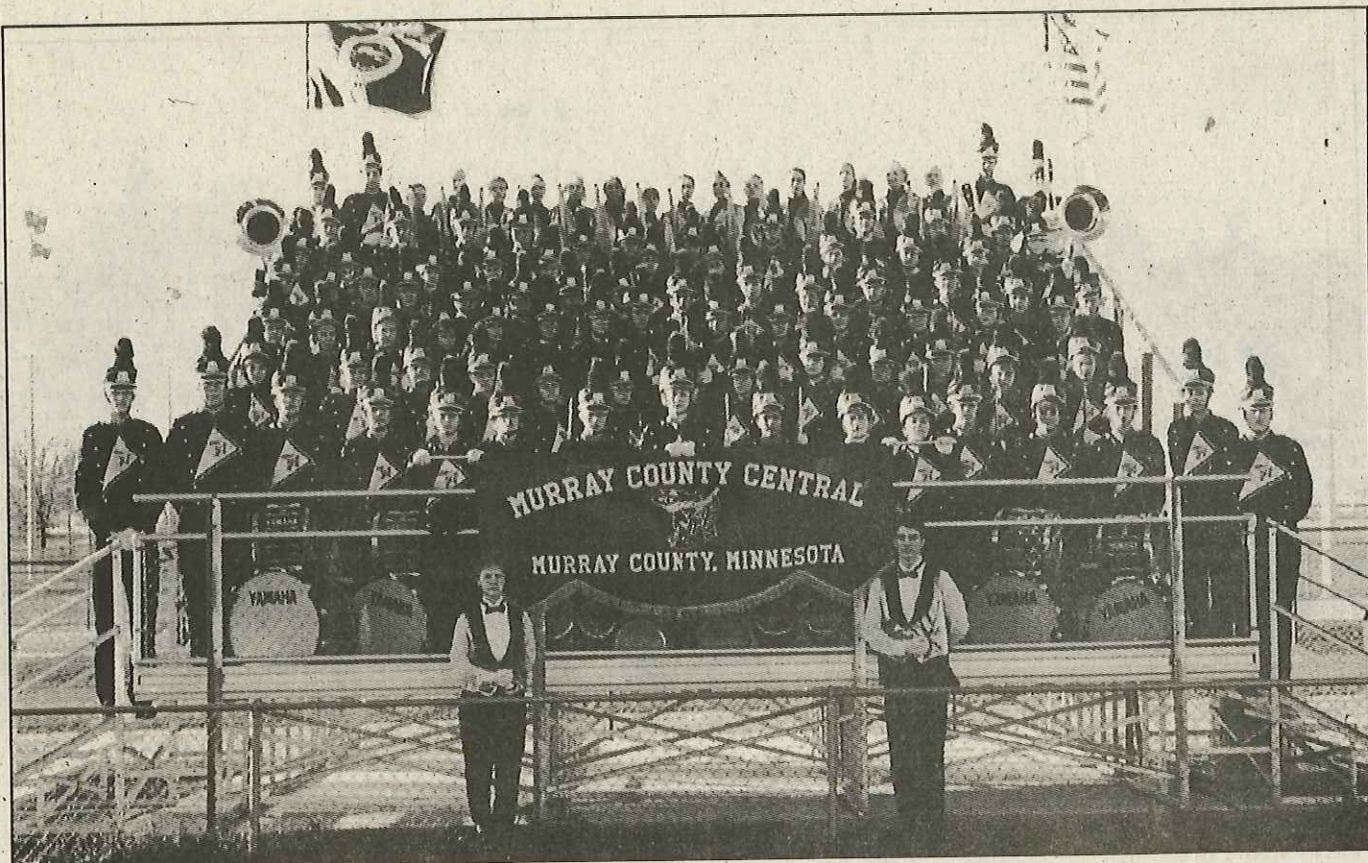
Welcome to the 1998
Tri-State band Festival

QUALITY USED CARS

CONNELL CAR CARE

509 East Main Luverne, Minnesota
Phone 507-283-2341

After Hours: Dave Connell 507-283-8690;
Don Spease 507-283-2750; Terry Connell 507-283-8848



Slayton, MN

The Murray County Central High School Band will appear in parade competition only. The band is under the direction of Donna Larson. The band has appeared at the Festival off and on over the past 20 years. Ross Behrends, Ann Rohrer and Amy Christiansen are drum majors. School enrollment is 275 students.

Vineyard Growth ASSOCIATES

We believe in a holistic approach to therapy. Viewing individuals as whole persons with emotional, spiritual, and physical needs, all of which must be respected and balanced in an integrated treatment approach.

We provide psychological services for a full range of individual, family and community concerns.

Dr. Joy Vineyard

Licensed Psychologist

Vineyard Growth Associates

111 West Main St., Luverne, MN 56156

Phone 507-283-4940

See our newly redecorated gift shop!

featuring:

- ✓ **Boyd's Bears** (Dollstone, Folkstone, Wee Folkstone)
- ✓ **Harmony Kingdom**
- ✓ **Snowbabies**
- ✓ **Precious Moments**
- ✓ **Beanie Babies**

And Much More!



Laudon's Gifts & Collectibles

121 E. Main • Luverne, MN • 507-283-2137

*Good Luck to the
participants in the
Tri-State Band Festival!*

Engebretson Funeral Home

Serving Rock County for over 40 years.
Luverne, MN 507-283-2777

THE Sewing Basket



720 S. Sycamore, Sioux Falls, SD • 605-339-1392

204 E. Main, Luverne, MN • 507-283-9769

Authorized Dealer of Viking & White

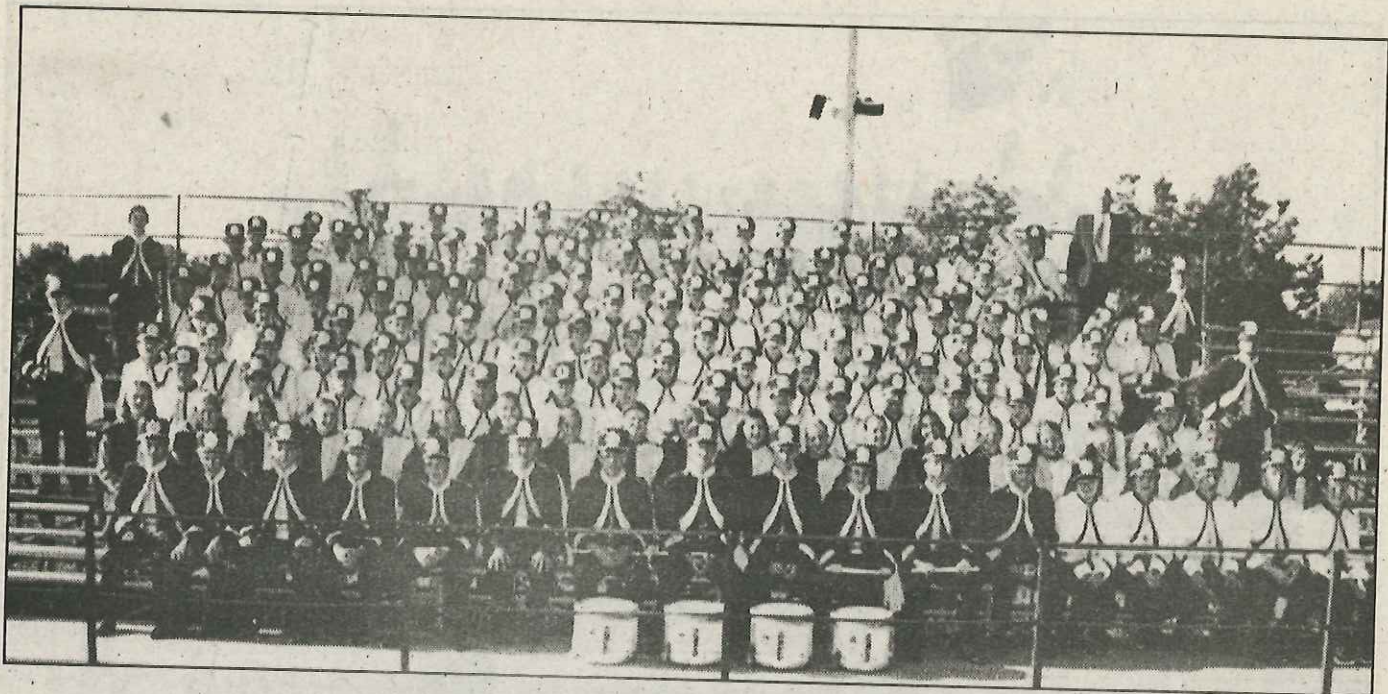
Sewing Machines & Sergers

WHITE

SALES & SERVICE

VIKING

America Sews • Tuesday, Oct. 20
Call Sewing Basket for reservation!



Madison, S.D.

Madison High School has competed 23 years at the Tri-State Band Festival and will compete in both parade and field. The Spirit of Madison is directed by Dennis Hegg. Drum majors are Kyle Eastman, Pam Sweet, Amanda Schultz and Jaime Haiar. Enrollment is 540.



**Portraits
with Style**



**myhre
studio**

N. Hwy. 75, Luverne, MN
(1/2 mile north of city limits, west side)
507-283-4325



Welcome to the

Tri-State Band Festival!

NELSON AUTOMOTIVE

126 West Main Street • Luverne, Minnesota
507-283-8659



**Michael D. Cox
Financial Services**

212 E. Main St. • P.O. Box 716
Luverne, MN • 507-283-9590 or 800-260-1014



Mike Cox
Registered Representative
FSC Securities Corporation

Nancy Van De Berg
Insurance Agent
MN 2006 2720



Stop in for Great Country Cookin'
& "Down Home" Hospitality!

Kids' Menu & Senior
Citizens' Menu

Call 507-283-4458
for take-out



I-90 & Hwy. 75, Luverne
Best Pancakes in Town!

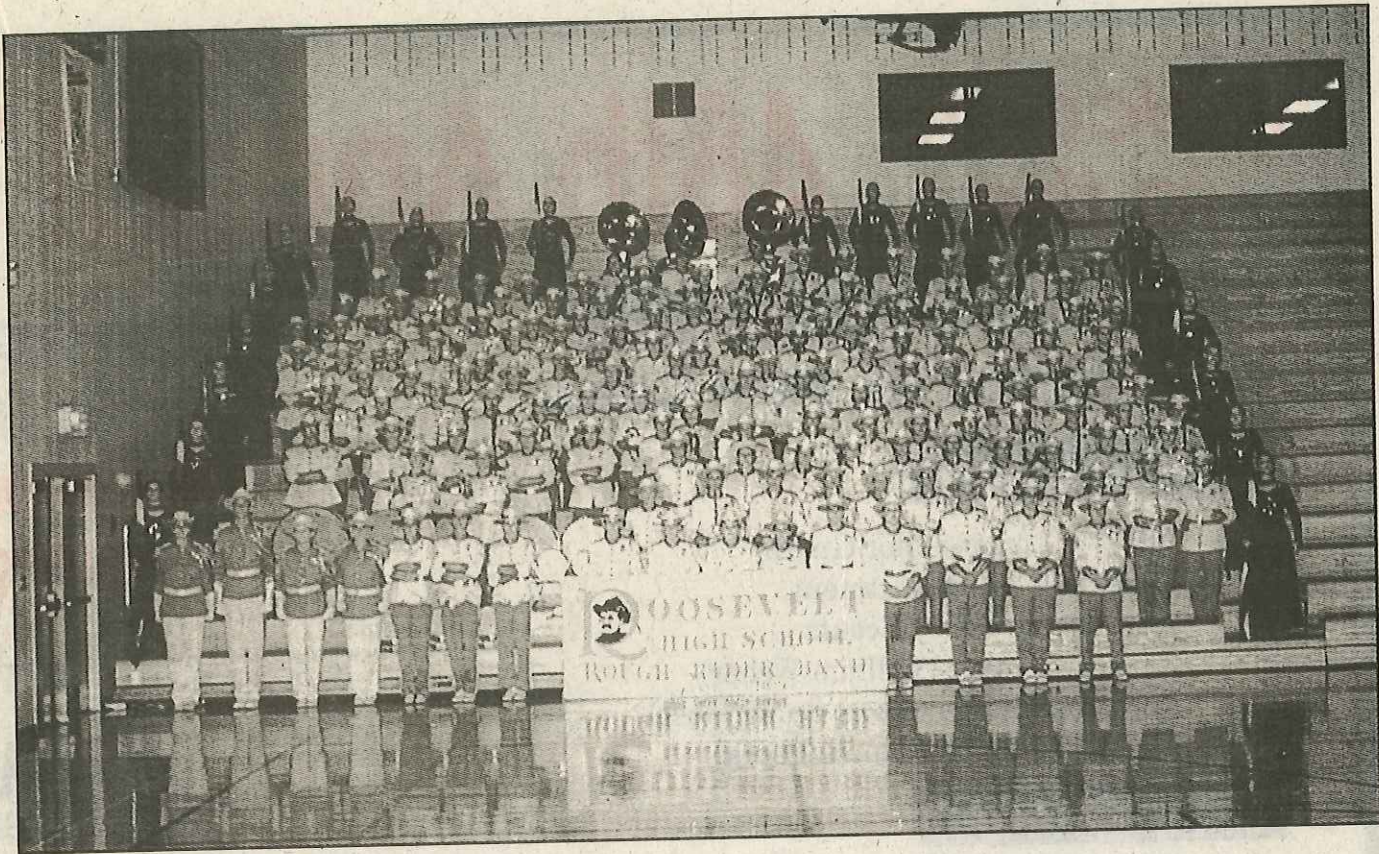
BREAKFAST ANYTIME

Raney & Jan Israelson, owners

Sun.-Thurs. 6 a.m. to 11 p.m.; Fri. & Sat. 6 a.m. to Midnight

Large Homemade
Cinnamon Rolls

NEW
Incredi-Bowls!



Sioux Falls, SD

The Roosevelt High School Rough Rider Band will compete in the Tri-State Band Festival for its second time in parade and field competition. The band is directed by Kelly Jacobsma. Drum majors are Nicole Makens, Nikol Moyer, Jeremy Van Hill and Kyle Brown. High school enrollment is 1,800.

THE BARGAIN CENTER

118 S. McKenzie, Luverne • 507-283-8013

Just in Shipment of **NEW FURNITURE**

Bunk Beds • Sofas • Loveseats • Dinettes
Entertainment Centers • End Tables & Coffee Tables
Mattresses • Box Springs • Oak Curio Cabinets

Always a nice selection of good, used merchandise.



LOOPY'S DOLLAR STORE

supports your 1998 Tri-State Band Festival!

Open Mon.-Sat. 9 a.m.-5:30 p.m. & Thurs. 'til 9 p.m.
Downtown Luverne • 507-283-2716

When you look ahead, look to us.

- Life Insurance • Health Insurance
- Annuities • Retirement Plans
- Other benefits for Lutherans



Jim Sonntag, FIC LUTCF

96C3184

119 E. Main • Luverne, MN • 507-283-2299



LUTHERAN BROTHERHOOD

A Family of Financial Services for Lutherans

Welcome to the 1998 Tri-State Band Festival!



Stop in and try one of our Wraps!

SUBWAY

I-90 & S. Hwy. 75,
Luverne, MN
507-283-4133

9 a.m. to 12 p.m. Sun. - Thurs. • 9 a.m. to 2 a.m. Fri & Sat.

Welcome to the 48th Annual T

PARADE TIME:
10:00 a.m. Main Street

PARADE ORDER

VFW & Legion Color Guard
Luverne Fire Department
Girl Scouts & Boy Scouts
Luverne Mayor (William Weber)
Luverne Middle School Band (Host)
Parade Marshal (Janine Papik)

BAND ORDER

- | | | |
|-----|--|-------|
| 1. | West Lyon - Inwood, IA | A |
| 2. | Sibley-Ocheyedan, IA | A |
| 3. | Tracy Area, MN | A |
| 4. | McCook Central, Salem, SD | A |
| 5. | Sioux Center, IA | A |
| 6. | Chamberlain, SD | A |
| 7. | Ellsworth, MN | A1 |
| 8. | New Richland-H-E-G, MN | A1 |
| 9. | George-Little Rock, IA | A1 |
| 10. | Adrian, MN | A1 |
| 11. | Murray County Central, MN | A1 |
| 12. | Viborg, SD | A1 |
| 13. | Luverne, MN | AA |
| 14. | Maurice - Orange City, Floyd Valley, IA | AA |
| 15. | Pipestone - Jasper, MN | AA |
| 16. | Spirit Lake, IA | AA |
| 17. | Brandon-Valley, SD | AAA |
| 18. | Madison, SD | AAA |
| 19. | Huron, SD | AAA |
| 20. | Brookings, SD | AAA |
| 21. | Worthington, MN | AAA |
| 22. | Washington - Sioux Falls, SD | AAAA |
| 23. | Yankton, SD | AAAA |
| 24. | Roosevelt - Sioux Falls, SD | AAAA |
| 25. | Southwest State University, Marshall, MN | Guest |

****No Cooler
On The
Handicapped
seating**



**Need
See any Tri
Festival c
member w
jackets
lette**



Tri-State Band Festival

s Allowed

Field**

parking &
available.

FIELD EXERCISES:

1:00 p.m. Luverne High School

(Field Gates will open at noon.)

FIELD ORDER

12:45	National Anthem - Colby Anderson	
1:00	West Lyon - Inwood, IA	A
1:15	Woodbury Central - Merville, IA	A
1:30	Sibley - Ochevedan, IA	A
1:45	McCook Central - Salem, SD	A
2:00	Sioux Center, IA	A
2:15	Chamberlain, SD	A
2:30	Luverne, MN	AA
2:45	Maurice-Orange City-Floyd Valley, IA	AA
3:00	Pipestone - Jasper, MN	AA
3:15	Spirit Lake, IA	AA

BREAK

3:45	Brandon-Valley, SD	AAA
4:00	Madison, SD	AAA
4:15	Huron, SD	AAA
4:30	Brookings, SD	AAA
4:45	Washington - Sioux Falls, SD	AAAA
5:00	Yankton, SD	AAAA
5:15	Roosevelt - Sioux Falls, SD	AAAA
5:30	Sioux City North, IA	AAAA
6:00	BRASSWORKS	
6:20	Olympic Retreat	
6:30	Awards Ceremony	

Help?

State Band

Committee

earing white

with red

ing.

Tri-State Insurance Company of Minnesota

One Roundwind Road, Luverne, Minnesota 56156-9989 (507)283-9561

a subsidiary of W.R. Berkley Corporation



Brandon, SD

Brandon Valley High School has had 17 years of experience with the Tri-State Band Festival. Bob Goheen directs the band and is assisted by Bruce Wildes and Kevin Kessler. Field commanders are Maron Sorenson, Julie Bachman, Eric Skalland and Crystal Truax. The school's enrollment is 760.

THE COFFEY HAUS

111 East Main, Luverne • 507-283-8676

Local artists' works on consignment.



Open
Monday-Friday
7 a.m. to 4 p.m.
Saturday
8 a.m. to 3 p.m.

Available: The "Coffey Room" for meetings and parties.
Call Sue for reservations.

Latte • Cappuccino • Mocha • Espresso
Italian Soda • Java Slush
Specialty Coffees & Teas

Lite Lunches
Fresh Baked Pastries • Breads
Cookies • Muffins

Welcome to the
48th Annual
Tri-State
Band Festival



Ferrellgas

South Hwy. 75
Luverne, MN
1-800-457-9191
or 507-283-2325

Family FLOORS & FURNITURE

Woody • Aaron • Markell

Stop in & see our selection of
floor coverings & furniture!

Knowledge and service are our specialty!

OPEN: Mon. & Thurs.: 9 am-8 pm Brandon, SD • Hwy. 11 & Hwy. 16
Tues.-Wed.-Fri.: 9 am-5:30 pm; (across from McHardy Park)
Sat.: 9 am-5 pm
605-582-2744



New Richland, MN

The New Richland-Hartland-Ellendale-Geneva Marching Band is under the directorship of Dave Haugh. Color guard instructor is Julie Fleming. They will appear in parade competition only. Drum majors are Tim Coyer and Katie Recknor. School enrollment is 248 students.

TRANSFORMING COMMUNICATIONS



Local Phone



Long Distance



Operator Services



Web Site Development



Cable TV



LAN/WAN Networking



Internet Access

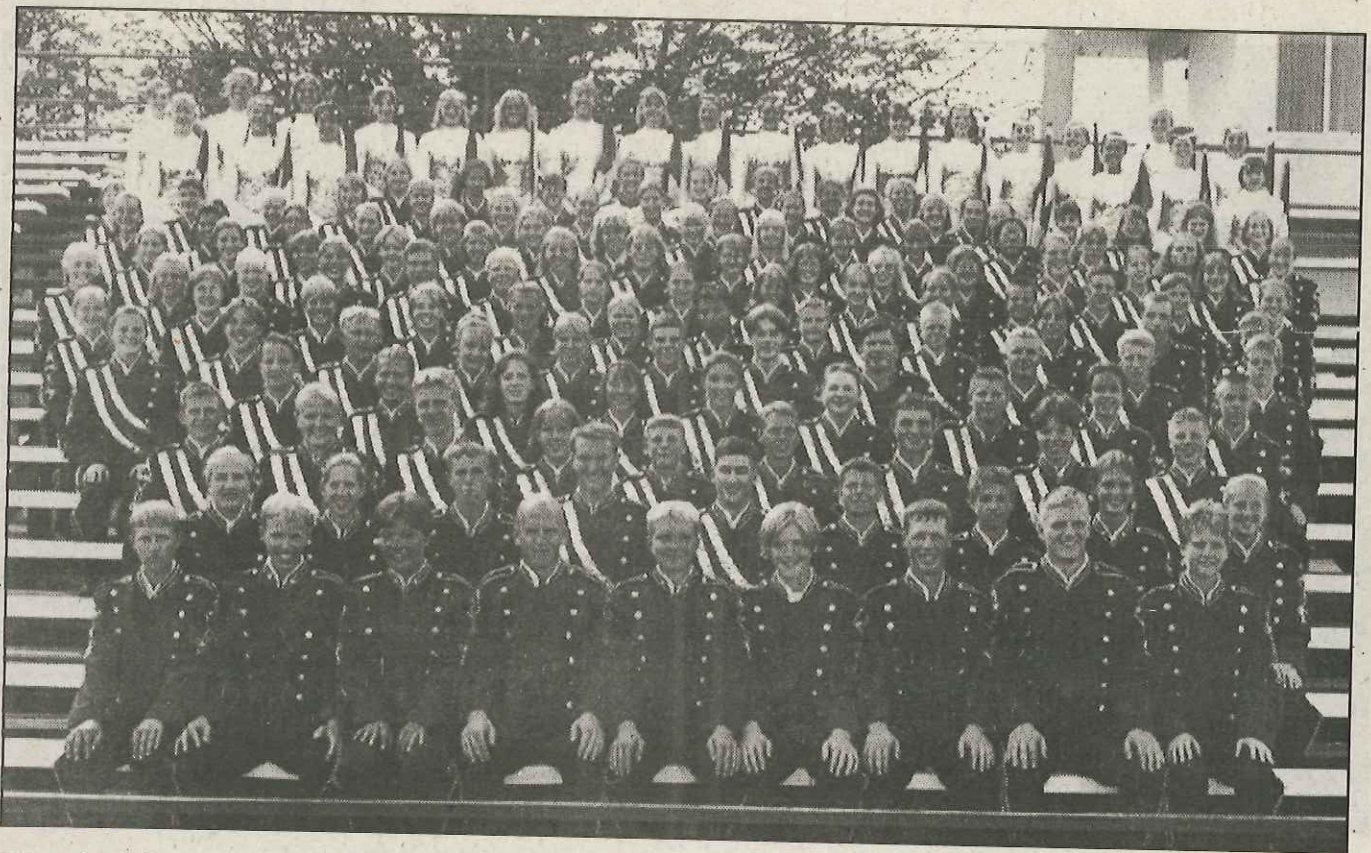


Paging & Mobile Radio

1.800.239.7501

P.O. Box 66 Irene, SD 57037
www.dtg.com

DTGTM
Dakota Telecommunications Group



Maurice-Orange City/Floyd Valley, IA

The Pride of the Dutchmen Marching Band under the direction of Steve Connell, a 1970 graduate of Luverne High School, and assistant director and guard instructor Mary Holcomb, will participate in both parade and field events. Drum majors are Eric Reeves and Rebecca Vander Molen. Senior high enrollment is 446.

Welcome to Dairy Queen...
For a cool treat or a hot meal!



We Treat You Right®

Dairy Queen® stores are proud sponsors of the Children's Miracle Network Telethon, which benefits local hospitals for children.

© AM D.Q. Corp. 1993

**HOT EATS
COOL TREATS.**



brazier.
Luverne, MN
Phone 283-9082
Open 10:30 a.m.
to 10 p.m.
7 days a week.

© Reg. U.S. Pat. Off., AM D.Q. Corp.

Good Luck all Band Festival Participants!

**Glen's
Food Center**

210 East Lincoln, Luverne, MN

OPEN 7 DAYS A WEEK

Mon. - Sat. 7 a.m. - 11 p.m.

Sunday 8 a.m. - 9 p.m.

**PHONE: 507-283-4429 (all store)
or 507-283-2557 (bakery/deli)**

**Deli • Bakery • Videos
Floral • Balloons • Cards • Catering**

**The BEST Deals
on Wheels**

Jim's Auto Sales
of Luverne, Inc.

507-283-2656

All States Realty Inc.

**Real Estate is our
ONLY Business...**

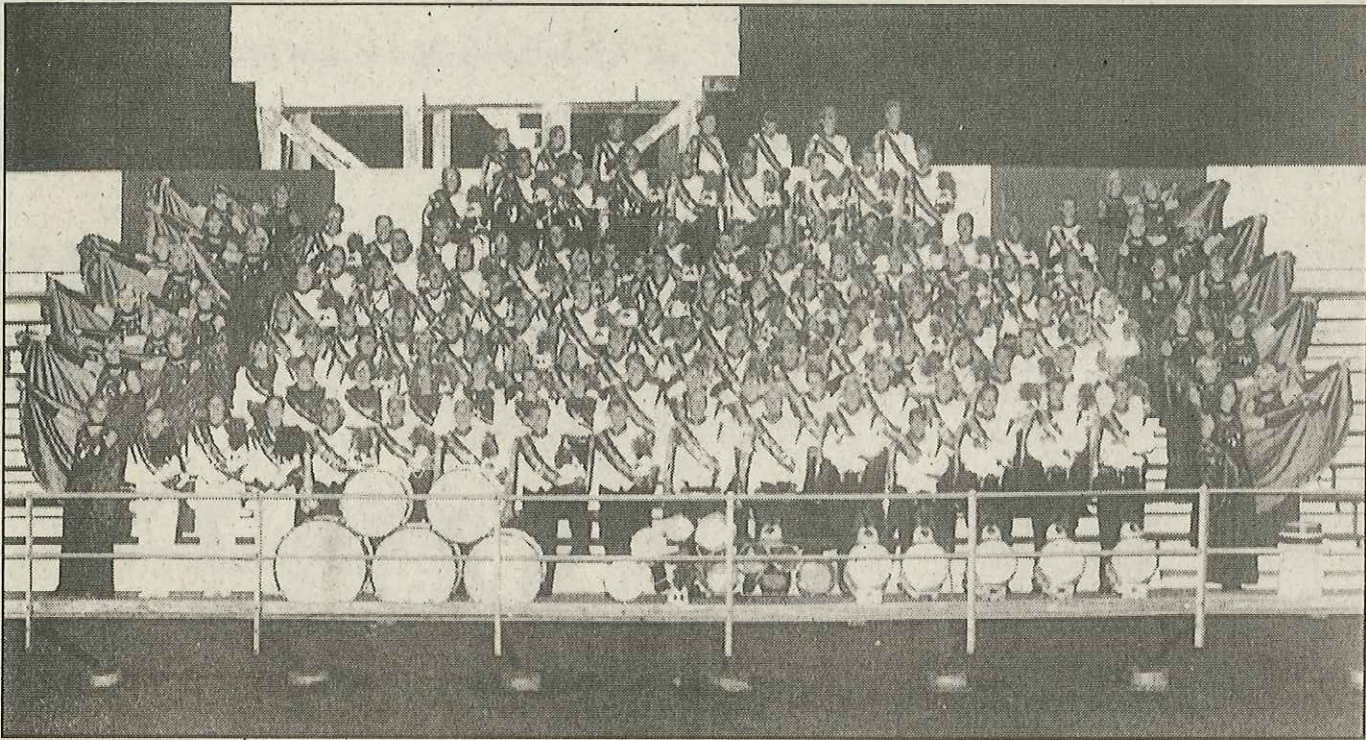
And we work at it full time!

Edwin Elbers, broker, home 283-8047

Dennis McNeil, home 283-8321

Ray Hoogeveen, home 283-2095

Bob Jarchow, Audrey Aanenson, Evelyn Bremer, Ken Husen, Keith Luethje, Roger Spease, Joyce Wessels, Terrie Gulden



Pipestone, MN

Pipestone-Jasper High School has competed at the Tri-State Band Festival every year since its beginning in 1951. The band is directed by Bob Carlson. Drum majors are Amanda Woodlee, Sara Roelfsma and Meredith Hayes. Enrollment is 430 students.

Tri-State Band Festival Button



SALE

To all customers wearing a Tri-State Band Festival Button, The Luverne Style Shop will discount:

10% off

the purchase of any dress, blouse, slack, skirt, sweater, purse, hat or knitwear item!

• Sale good thru Saturday, Sept. 26 •

Buy your Band Buttons at the Luverne Area Chamber of Commerce Office.

Luverne Style Shop

202 East Main Street • Luverne, Minn

WAYNE'S BODY SHOP

CELETTE

We'll Restore Your Car
To Factory
Specifications.



- Auto Glass Installation
- Body Repair & Refinishing
- Classic Car Restoration

310 West Hatting • Luverne, MN • 507-283-8083

Wayne Walgrave, Owner

PRIME VEST

Financial Services, Inc.

Stocks - Bonds - Mutual Funds
US Government Securities,
IRAs - & more

Joseph Baloun
Investment Executive

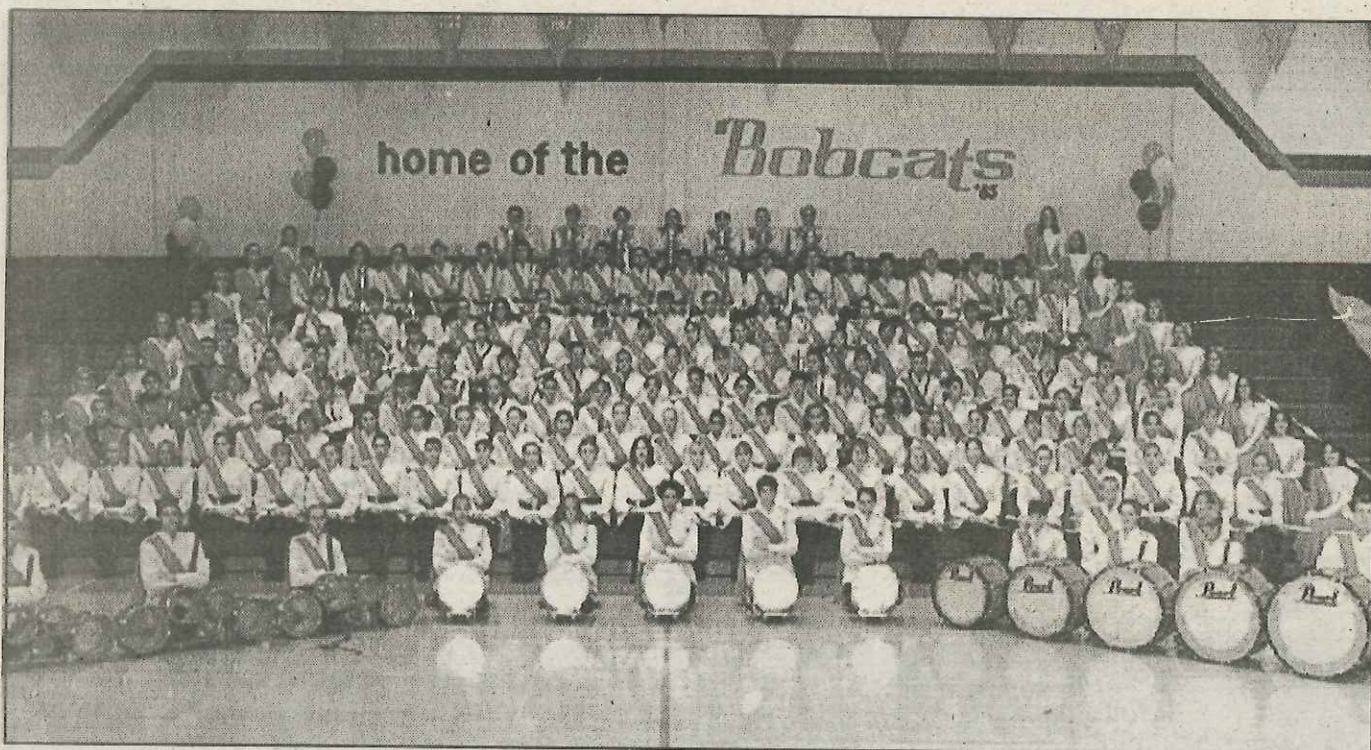
Located
at



Minnwest Bank
Luverne

116 East Main
507-283-2366

Securities provided by PRIMEVEST: • Not FDIC insured
• No financial Institution Guarantee • May Lose Value.



Brookings, S.D.

Brookings High School Marching Band will again appear in both field and parade competition in this year's Festival. The band is directed by Lance Burnett. Drum majors are Katey Coull, Sarah Stratton and Mary Nelson. High school enrollment is 970 students.

Welcome to the 1998 Tri-State Band Festival!

1948 (50) 1998
LUVERNE FARM STORE
Quality & Service

Gary Golla
South on Hwy. 75 • Luverne, MN • 507-283-9555

Welcome to Luverne! "We Service What We Sell"

- Muzzle Loading • Guns & Accessories • Licenses
- Fishing Supplies • Scopes & Binoculars
- Loading Supplies • Archery Supplies

Full Service Licensed Gunsmith

HARVEY'S

Trading Post, Inc.

Hwy. 75 & Main • Luverne, MN
507-283-8158

Welcome to the Tri-State Band Festival

All-You-Can-Eat

PIZZA & CHICKEN BUFFET

11 a.m. to 2 p.m.-Saturday, Sept. 26

Includes pizza, chicken, broasted potatoes and salad bar



The Pizza Ranch

Good Things Everyday!

110 E. Main, Luverne
507-283-2379

Free Local Delivery



Salem, SD

McCook Central High School Band is appearing at the Tri-State Band Festival for the fourth time. The band is under the direction of Terry Keehn. Flag coordinator is Brenda Moerke. Drum majors are Mindi Ecklein, Heather Fischer and Kim Ecklein. High school enrollment is 172 students.

Enjoy the 1998 Tri-State Band Festival!

Exchange State Bank of Hills

"A Good Bank in a Good Community"

Hills, Minnesota 56138
507-962-3250

Steen Branch
507-855-2357



HOURS:
Monday-Wednesday, Friday
8:30 a.m.-Noon, 1:00 p.m.-3:00 p.m.
Thursday
8:30 a.m.-Noon, 1:00 p.m.-6:00 p.m.

FOR YOUR USE...
We have a FAX machine available
for your use. Stop by today and
inquire!

DRIVE-UP WINDOW HOURS:
Monday-Wednesday, Friday
8:00 a.m.-5:00 p.m.
Thursday
8:00 a.m.-6:00 p.m.

STEEN BRANCH HOURS: Monday-Friday 10:00 a.m. to Noon, 1:00 p.m.-2:00 p.m.



Brown Church

The Only Church in Minnesota Closed on Sunday!

Antiques ♦ Collectibles ♦ Primitives
Furniture - Old, Used, Newtiques
Glassware ♦ Crocks ♦ Pottery

Estey & Main Luverne, MN 507-283-2586

Hours: Best chance, 10 a.m. - 4 p.m. Mon. - Sat. or by appointment

"Worth a Drive in the Country" for Antiques and Collectibles

1 1/2 miles south of I-90 Exit, 2 east and 3 3/4 south

Luverne, MN 507-283-4093

Hours: Mon. - Sat. 10:00 a.m. - 5:00 p.m.



Country View Antiques

Hillside Antiques

- Buy and Sell Antique Furniture •
- Restoration •

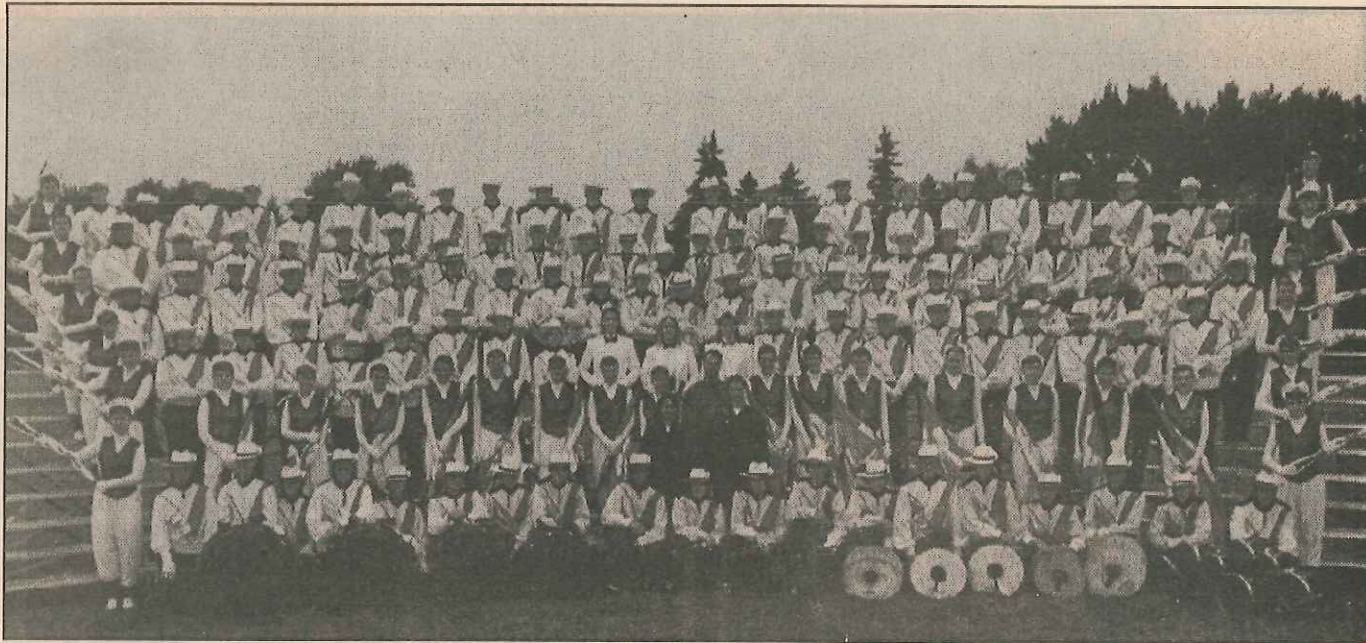
Open Mon.-Sat. 10 a.m.-5 p.m.

R.R. 3, Box 22B • Luverne, MN

1 mile east of Luverne on County Road 4 (Main Street),

1/2 mile north on County Road 9 and 1/4 mile east

507-283-2985



Sibley, IA

Sibley-Ocheyedan High School is competing in the Tri-State Festival for its 16th time this year. The Marching Generals are under the direction of Dan Stout. Drum majors are Trevor Helmers and Kari Zevenbergen. Enrollment is 328 students.



220 E. Main Luverne, MN 507-283-8605
Scott VandeWeerd
Imprinted & Embroidered Sportswear
Promotional Products

OFFERMAN & COMPANY
LUVERNE COMMODITIES
STOCKS & BONDS
IRAs

Robert Loosbrock
 REGISTERED REPRESENTATIVE

313 E. Main
 Luverne, MN 56156
 Call Toll Free 1-800-950-4561
 Call Collect 507-283-9575

Edward Jones

Earl Hanson
 Investment Representative

101 East Main
 Box 626
 Luverne, MN 56156
 507-283-4469 • 800-243-4469

Serving Individual Investors Since 1871

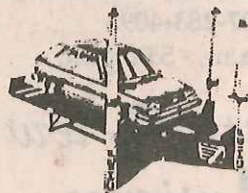


Fred's Body Shop

Now available,
 collision repair on the

CHIEF E-Z-LINER

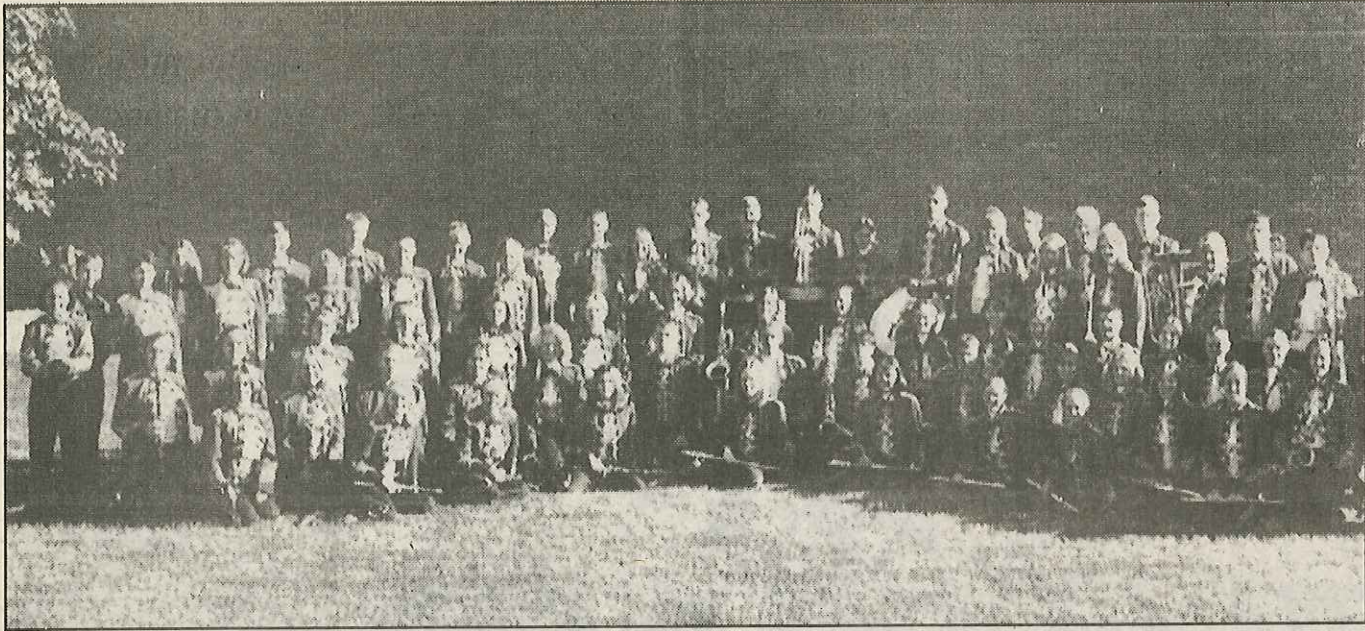
For unitized body damage, we use the Chief EZ Liner II to accurately and quickly repair your car to manufacturer's specifications.



303 W. Edgehill

Luverne, MN

PHONE 507-283-2728



Sioux Center, IA

The Sioux Center Community High School has appeared in the Tri-State Band Festival for more than 20 years. The band is directed by Julie Hulstein. Drum majors are Kelly Bahrke and Tim Vander Ploeg. The school's enrollment is 297 students.

Good Luck

Adrian Dragons Marching Band
in Tri-State Band Festival Competition!



Adrian State Bank
P.O. BOX 129 322 MAINE AVENUE
ADRIAN, MINNESOTA 56110
PHONE: 507-483-2147

Member F.D.I.C.

**Good Luck to all the bands at the
Tri-State Band Festival!**

HAIR Ltd.

**101 S. McKenzie • Luverne, Minnesota
507-283-9519**

Open Monday-Thursday 9 a.m. to 8 p.m.
Friday 9 a.m. to 5 p.m.
Saturday 8 a.m. to 3 p.m.

**Good Luck to All
Band Festival Participants!**

Pamida
Hometown Values

405 W. Interstate Drive
Luverne, MN
507-283-1965

**PAMIDA
PHARMACY**

405 W. Interstate Drive
Luverne, MN
507-283-2156

for the least,"
"Most of the best,"

• STEAKS
• SEAFOOD
• COCKTAILS

• Open Mon. - Sat. 5 p.m.
• Meeting & Party Rooms
• Vern's Meat Market 9 a.m.-5 p.m., Mon.-Sat.

1-90 & U.S. 75 So., Luverne, MN 56156
507-283-9161

T.C. Dispanel
S.C. Dispanel

Steak House & Lounge



Spirit Lake, IA

The Spirit Lake High School Band is making its 11th appearance in the Festival. The Force is under the direction of Jason Pentico. Drum majors are Graham Thorbrogger and Mary Souder. Enrollment is 418 students.



Bill's Exhaust Pros

404 South Kniss, Luverne, MN

Phone 507-283-0025 or

Toll Free 1-800-840-7150

Mon.-Fri. 7:30 a.m.-5:00 p.m., Saturday 7:30 a.m.-12 Noon

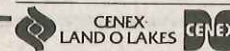


"Only what you need. . .
at a price guaranteed"



Welcome to the
48th Annual Tri-State Band Festival!

Hills-Beaver Creek
COOP FARM SERVICE
Hills, MN 962-3221 Beaver Creek, MN 673-2388



Green Lantern

CAFE & STEAK HOUSE

Marv & Fran Kern,
managers

Hardwick, MN
669-2601

Hours:

Mon.-Thurs. 7 a.m. - 10 p.m.
Fri. & Sat. 7 a.m. to 11 p.m.
Sun. 8 a.m. to 10 p.m.

Green Lantern

BAR

Q-Ball & Joe Swenson,
owners

Hardwick, MN
669-2601

Bar Hours:

Mon.-Sat. 11 a.m. - 1 a.m.
Sun. Noon - Midnight

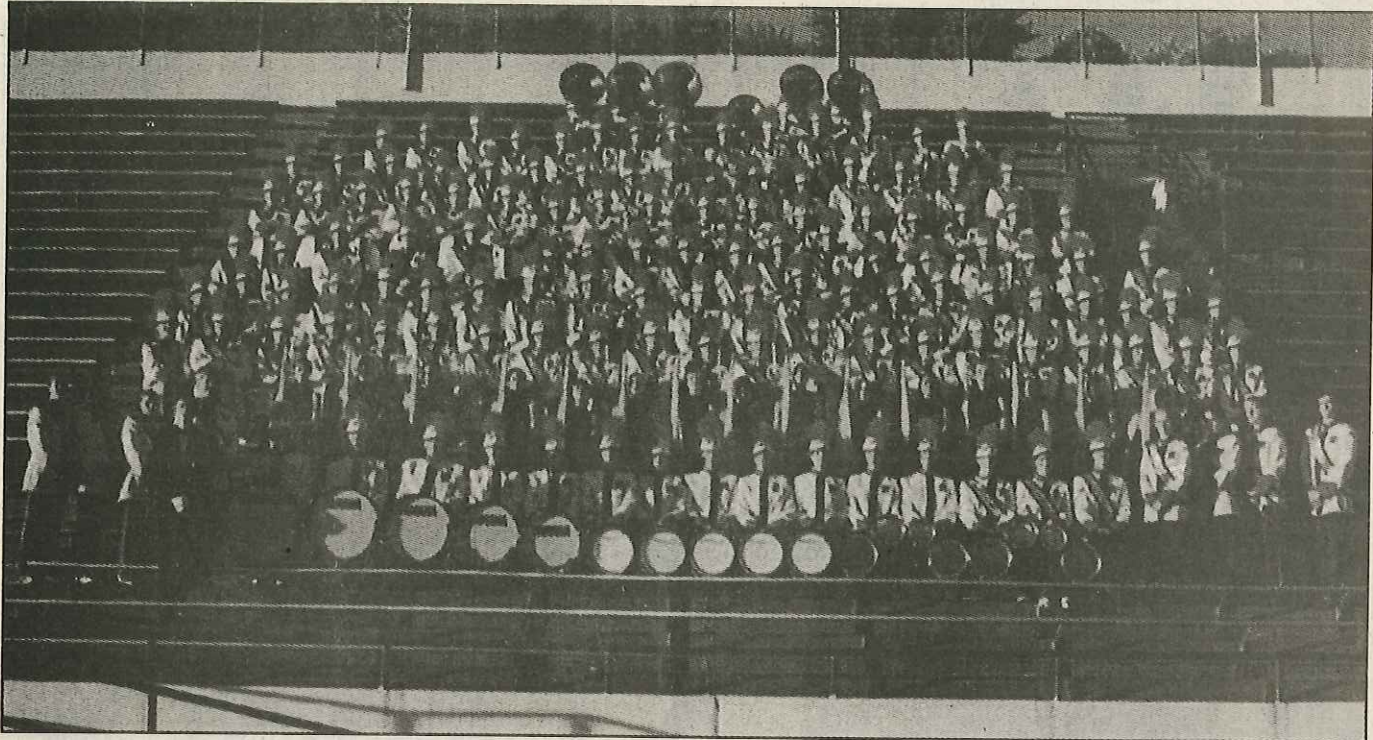
Good Luck To All
Band Festival Participants!

Keith's Grocery & Bake Shoppe

219 Maine Ave., Adrian, MN

507-483-2959

Hours: Mon.-Sat. 8 a.m. to 9 p.m.; Sun. 8 a.m. to 2 p.m.



Sioux City, IA

North High School Marching Band will compete in field events in its sixth appearance at the Tri-State Band Festival. The band is under the direction of Larry Kisor, Kevin Linder, Mark Lucas, Melanie Hovland, Jessica Muffit, Stacy Nichols and Mark Nelms. Drum majors are Kris Byam, Jeff Guntren and Matt Rixner. School enrollment is 1,400.

SEE US FOR YOUR CUSTOM ORDERS
OF JACKETS, SHIRTS, CAPS AND MORE.

PRINT EXPRESS

SCREENPRINTING & EMBROIDERY

207 E. MAIN • LUVERNE, MN

OVER 20 YEARS EXPERIENCE

888-283-1770 OR 507-283-1770

In-House Printing for fast delivery!!

Jubilee foods

105 S. Estey
Luverne, MN

Phone

507-283-4408

OPEN 7 DAYS A WEEK

Monday thru Saturday 6 a.m. to 10 p.m.

Sunday 8 a.m. to 8 p.m.

- Complete Deli & Bakery Departments
- Vacuum Bags & Belts
- Quality Meats & Fresh Produce • Dry Cleaning
- Travelers Express Money Orders • Ice
- Friendly Employees and Fast Service
- Greeting Cards • Postage Stamps
- Copy Machine Available



Students! (Age 5 to ??)

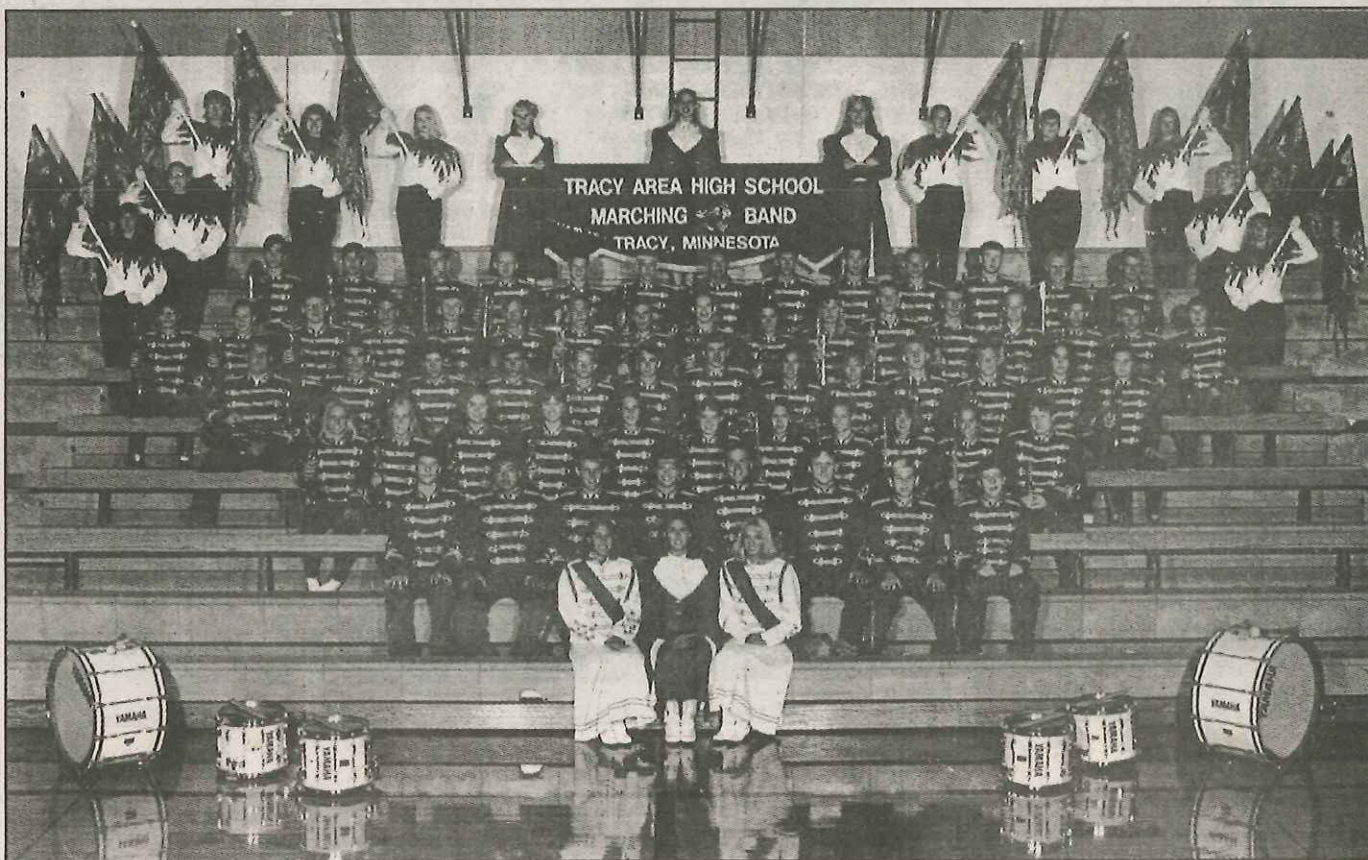
\$1⁰⁰ Off Haircut

Coupon expires Oct. 31, 1998 at Shear Reflections, Luverne.

Shear Reflections

210 E. Main • Luverne, MN • 507-283-4343

OPEN: Monday - Saturday. Evening appts. available.



Tracy, MN

Tracy Area High School will appear in parade competition in its 13th year at the Festival. Chris Miller directs the band. Drum majors are Amy Hanson, Jessica Boerboom and Heidi Miller. Senior high school enrollment is 345.



Make a Note of This!

We do

Custom Embroidery

right at our store. Stop in and let us help you design something just for you!

Sue's Shirts & Sportswear

214 East Main, Luverne, MN 507-283-8538

THE LUVERNE VFW
Highway 75 • Luverne, MN

Lounge and
Kitchen open at 11:00 a.m.

NOON LUNCHEONS

Mon.-Sat. open at 11:00 a.m.

featuring a variety of entrees
from the lighter side to the hearty appetite with
specials each day. Private rooms also available.
Remember! You're always welcome!

**Welcome to Luverne's
Tri-State Band Festival!**

RENFRO *Variety Store*

***It's the FUN place to shop
for all your needs!***

206 East Main Street, Luverne, Minnesota

507-283-2628

Margaret Vegge, owner

**Welcome to Luverne's
48th Tri-State Band Festival**

Sudenga Communications

504 E. Lincoln • Luverne, MN • 507-283-0066

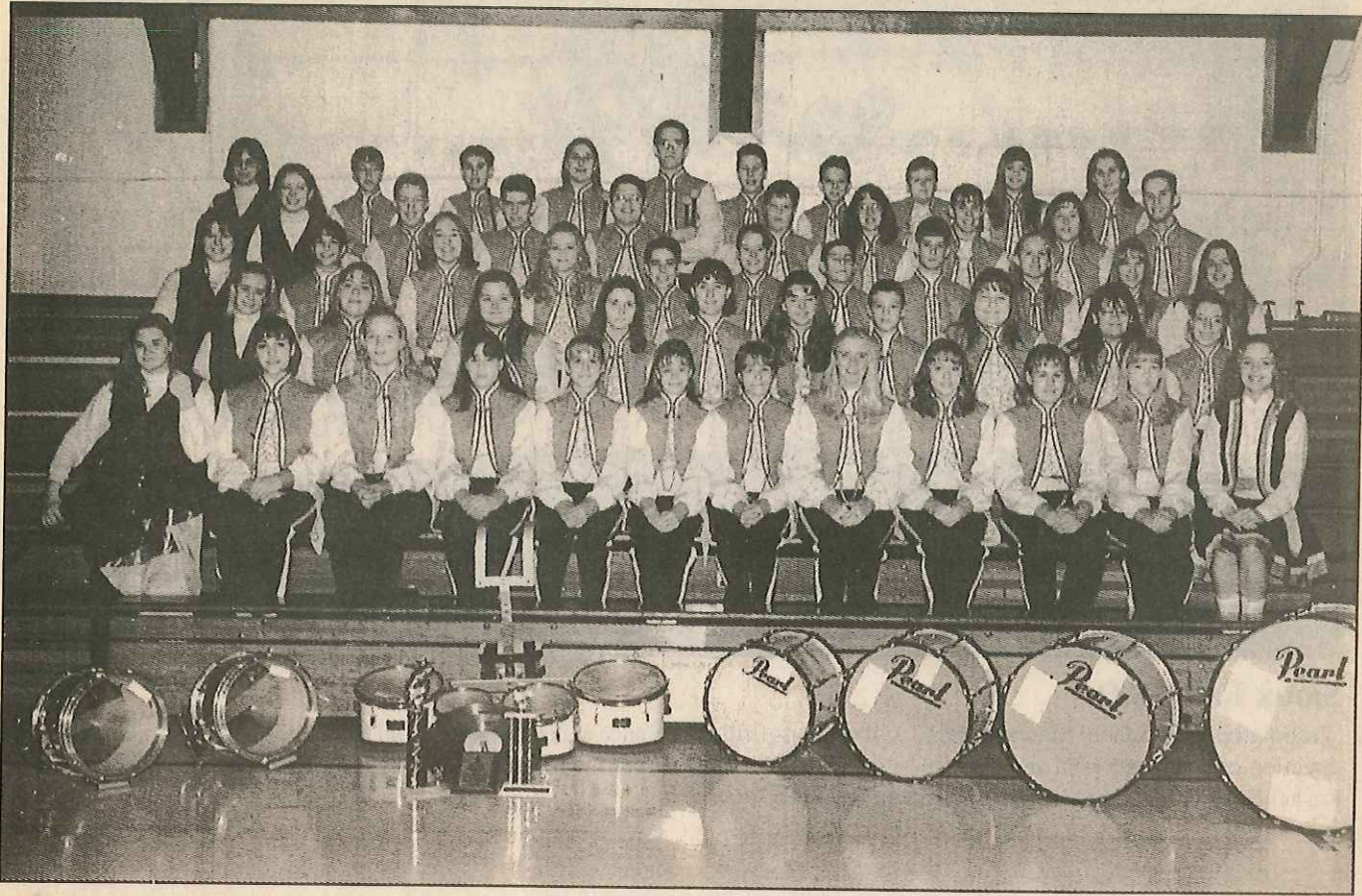
Authorized agent for

Cellular 2000

Better Call.

Service provided by:





Viborg, SD

The Viborg High School Marching Band will participate in the Tri-State Marching Band Festival for the first time this year. The band is directed by Derick Bluford. Drum major is Jami Overby. School enrollment is 90 students.

*Welcome to Luverne's
Tri-State Band Festival!*

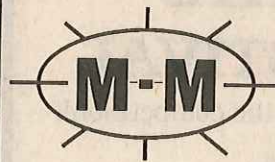
The Estenson Co.

123 West Main, Luverne, Minnesota

Phone: 507-283-2386

- Insurance • Accounting
- Income Tax Service

SUPPORTS THE TRI-STATE



BAND FESTIVAL

**SO. HWY 75
507-283-2075**

STORE HOURS:
Mon.-Fri. 8 a.m. to 8 p.m.;
Sat. 8 a.m. to 5 p.m.;
Sun. Noon to 5 p.m.



Auto Glass & Collision Repair

411 W. Gabrielson Road, Luverne, MN

Phone 507-283-8711

**Good Luck to all Band Festival
Participants!**

Vander Kooi Law Office, P.A.

Benjamin Vander Kooi, Jr.

Attorney at Law

127 East Main, P.O. Box 746

Luverne, Minnesota

Phone 507-283-9546



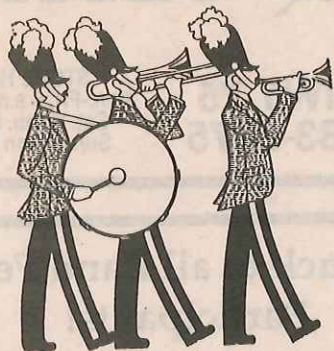
Sioux Falls, S.D.

Washington High School Marching Band will make its fifth appearance at the Tri-State Band Festival. The band is under the direction of Gary Pederson and assistant director Rick Jensen. Drum majors are Dana Wigg, Jeni Melvin, Justin Rae and Rachel Engelbrecht. High school enrollment is 1,800.

We urge everyone to take the day off & attend the

TRI-STATE BAND FESTIVAL

Good luck to all bands in the competition!!



Confident in the future of Luverne &
the surrounding areas.

Latham Agency, Inc.

Insurance
126 E. Main • Luverne, MN
507-283-9181

TRUST THE WATER EXPERTS.

At Culligan, our mission is to understand your water needs. We know water and we can recommend the water system best fit to solve your water problem. Trust the Experts. Call your Culligan Man.

114 N. Kniss, Luverne, MN
507-283-9105 or 888-283-9105

THE
CULLIGAN
MAN

Culligan.
Trust The Experts.

©1990 CULLIGAN INTERNATIONAL COMPANY

Since Culligan Dealers are independently operated, offers and participation may vary.



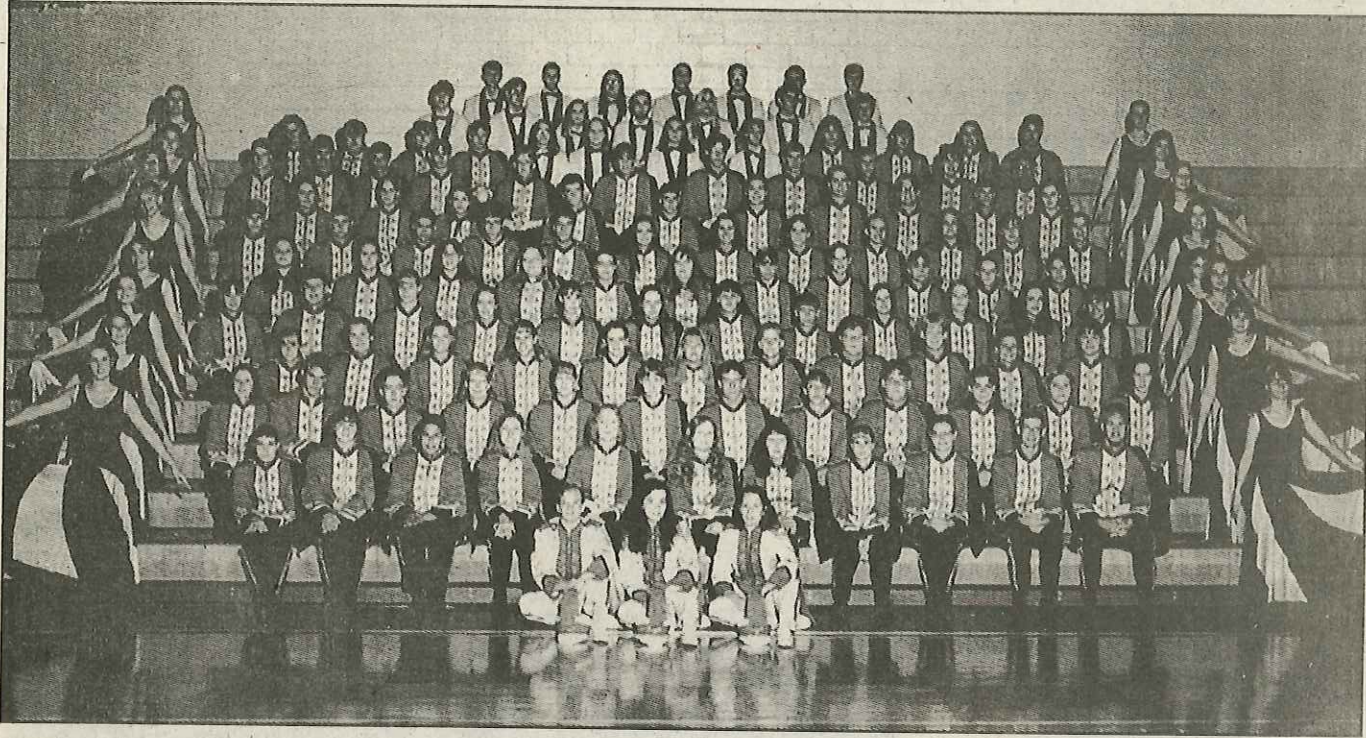
Luverne Eagles Club

312 West Harrison, Luverne, MN
Phone 507-283-9661

Open 4 p.m. Weekdays & 1 p.m. on Saturdays
Happy Hour: 5:30-6:30 p.m.

LADIES NIGHT every Wednesday night
MEN'S NIGHT every Thursday night

The Eagles Club is available for any non-profit organization to use. Call the Club Manager at 283-9661 if you're interested in booking the Eagles Club for wedding receptions, class reunions, parties, etc.



Yankton, S.D.

Yankton High School Marching Band will appear for the first time in both parade and field competition in the Tri-State Band Festival. The band is directed by Ted Powell. Drum majors are Tim Mulhair, Annie Carey and Derek Hisek. School enrollment is more than 1,000 students.



THANKS EVERYONE!

...the bands for participating,
the spectators for coming to watch,
& the advertisers for supporting
the 48th Annual Tri-State Band Festival



Moville, IA

Woodbury Central High School is making its second appearance at the Tri-State Band Festival and will participate in field competition. The band is under the directorship of Julie Weigandt. Rose Rumohr is drum major. The school has 210 students enrolled.

CRAGOE REAL ESTATE

419 E. Main • Luverne, MN • 507-283-2647 or 1-888-627-2463

213 Maine Avenue • Adrian, MN • 507-483-2000

Gene Cragoe, broker -- Home phone: 507-283-1839

Lowell Binford, Bob Zinnel, Gert Wessels, Leon & Mary Pick, Ida Reverts, Bryan Fodness & Andy Steensma



**Homes • Acreages
Commercial Land Rental
Lake Property • Mobile Homes**

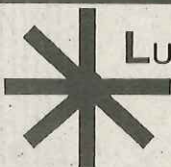


*No One Knows
The Country
Like We Do*

Dr. Paul Henriksen Optometrist

212 West Main St.
Pipestone, MN 56164

**Phone 507-825-5444
Toll free 1-800-750-5448**

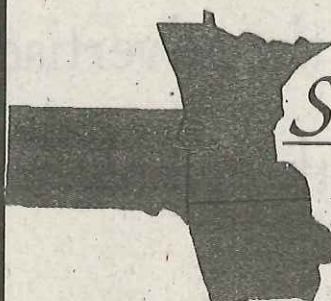


**LUVERNE
BUILDING
CENTER**

102 East Maple
Luverne, MN
Phone 507-283-9151
Larry Voss &
Sam Berghorst

Lumber - Windows - Cabinets - Siding
Plywood - Doors - Vanities - Cement - Steel
Paint - Paneling - Fencing - Roofing
Hardware - Ceiling Tile - Insulation

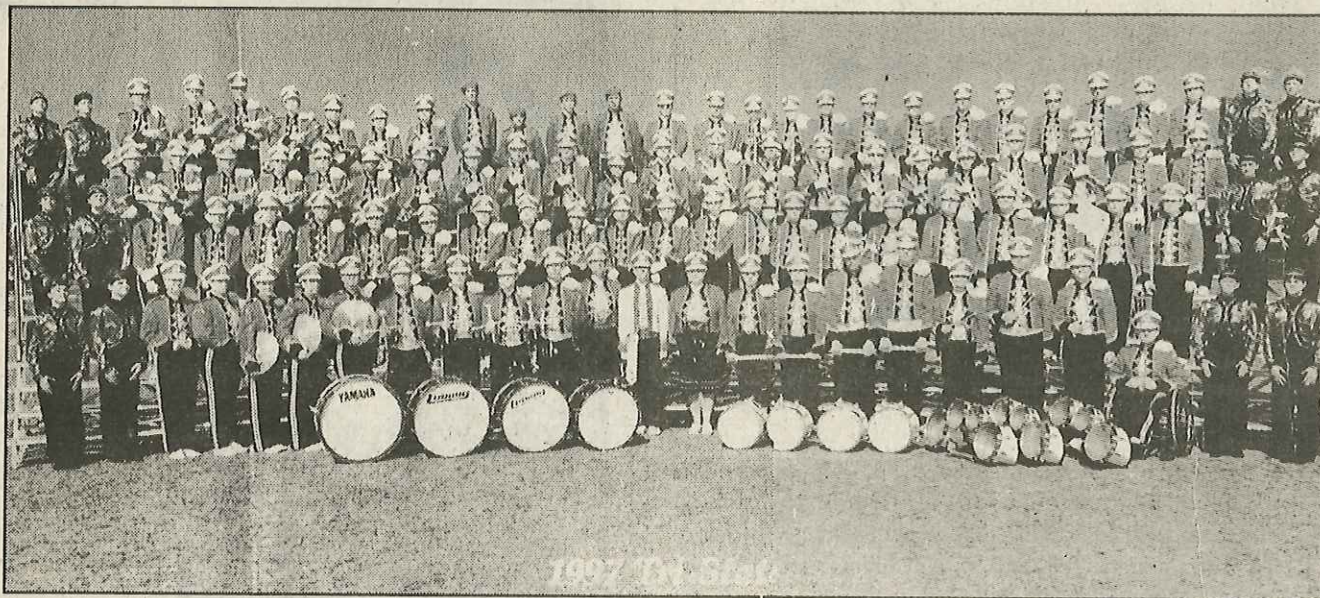
OPEN Monday thru Friday 7:30 a.m. to 5:30 p.m.
Saturday 8:00 a.m. to 12:30 p.m.



State Line

**Insurance &
Financial Services**

228 South Main, Hills, MN 56138 • 507-962-3700



Inwood, IA

West Lyon Community School High School Band is under the directorship of Lynette Wedeking. Abbie Cooper and Tami Wulf are drum majors. The band will compete in both parade and field competition. The school has 300 students enrolled.

Enjoy The Band Festival!



TACO JOHN'S
A WHOLE LOT OF MEXICAN.

More Than You Imagined™
South Hwy. 75, Luverne, MN
Phone 283-4562
Sunday-Saturday 11 a.m. to 10 p.m.
Drive Thru Extended Hours - Friday &
Saturday 11 a.m. to 11 p.m.

Roundwind Travel

313 East Main, Luverne, MN
Phone 507-283-2308 or 1-800-227-3273

**Remember, there is NO
CHARGE for our SERVICE!**

Airlines - Cruises - Amtrak - Bus Tours
Hotel Reservations - Car Rentals

Luverne Flowers and Greenhouses

811 West Warren
Luverne, Minnesota 56156
Phone 507-283-4451

Full service
floral and
landscaping!
Plant Now
For Spring!



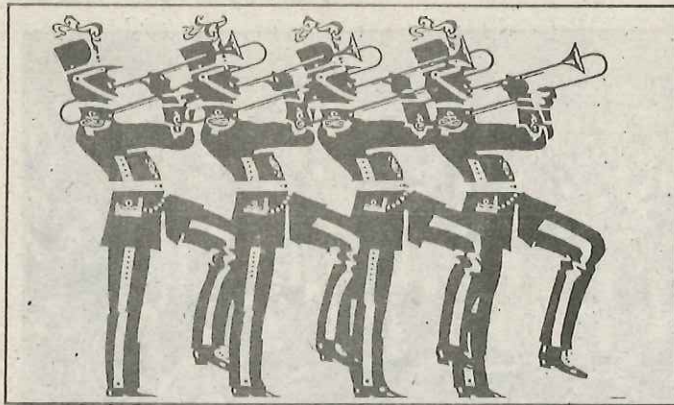
Enjoy a round of golf at the LUVERNE COUNTRY CLUB

Located east of Luverne. Take Hwy. 16 east to Cty. Rd. 9 south, turn on first left. Clubhouse is located on right side.

Golf Carts & Driving Range Available

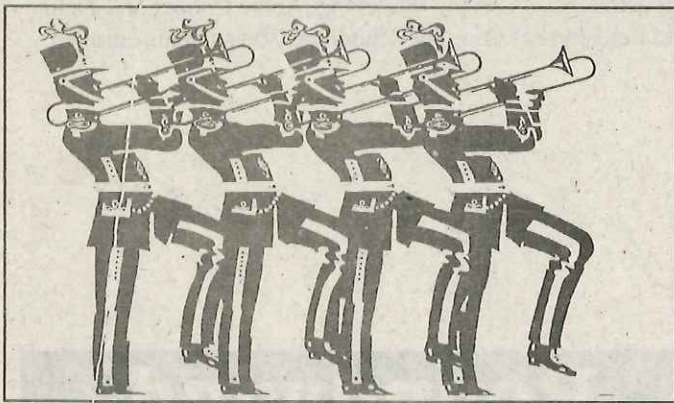
CALL 507-283-4383

for tee times



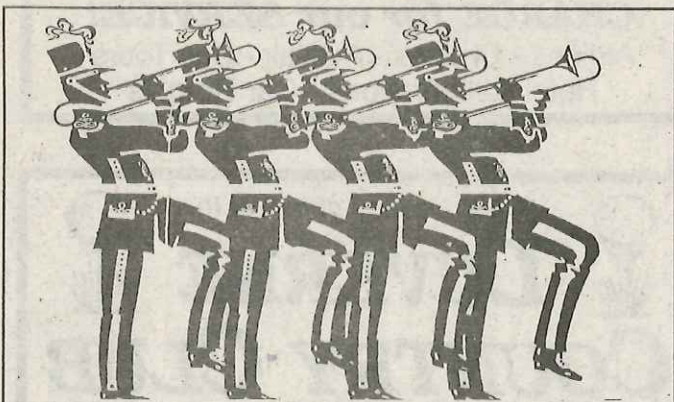
Huron, S.D.

The Huron High School Marching Band will appear at the Tri-State Band Festival for the first time this year participating in both parade and field competition. The band is directed by Larry Petersen. Drum majors are Laura Nesson and Karen Anderson. School enrollment in senior high is 750 students.



Chamberlain, SD

The Chamberlain High School band is participating in parade and field competition in the Festival. The band is directed by Kory Vrieze. Drum majors are Alicia Schaub and Summer Spreckels. School enrollment is 300.



Worthington, MN

The Worthington High School Band is directed by Craig Brenden. Drum major is Ami Grote. The band has appeared at the Tri-State Band Festival for 37 years. They will participate in parade only. School enrollment is 820 students.





4

Extra Value Meals





starting at

\$2.99

each

1. **BIG MAC® Sandwich**
large fries, medium soft drink
2. **TWO CHEESEBURGERS**
large fries, medium soft drink
3. **QUARTER POUNDER® Sandwich**
large fries, medium soft drink
4. **McCHICKEN® Sandwich**
large fries, medium soft drink

Hamburgers

79¢

each

Cheeseburgers

89¢

each

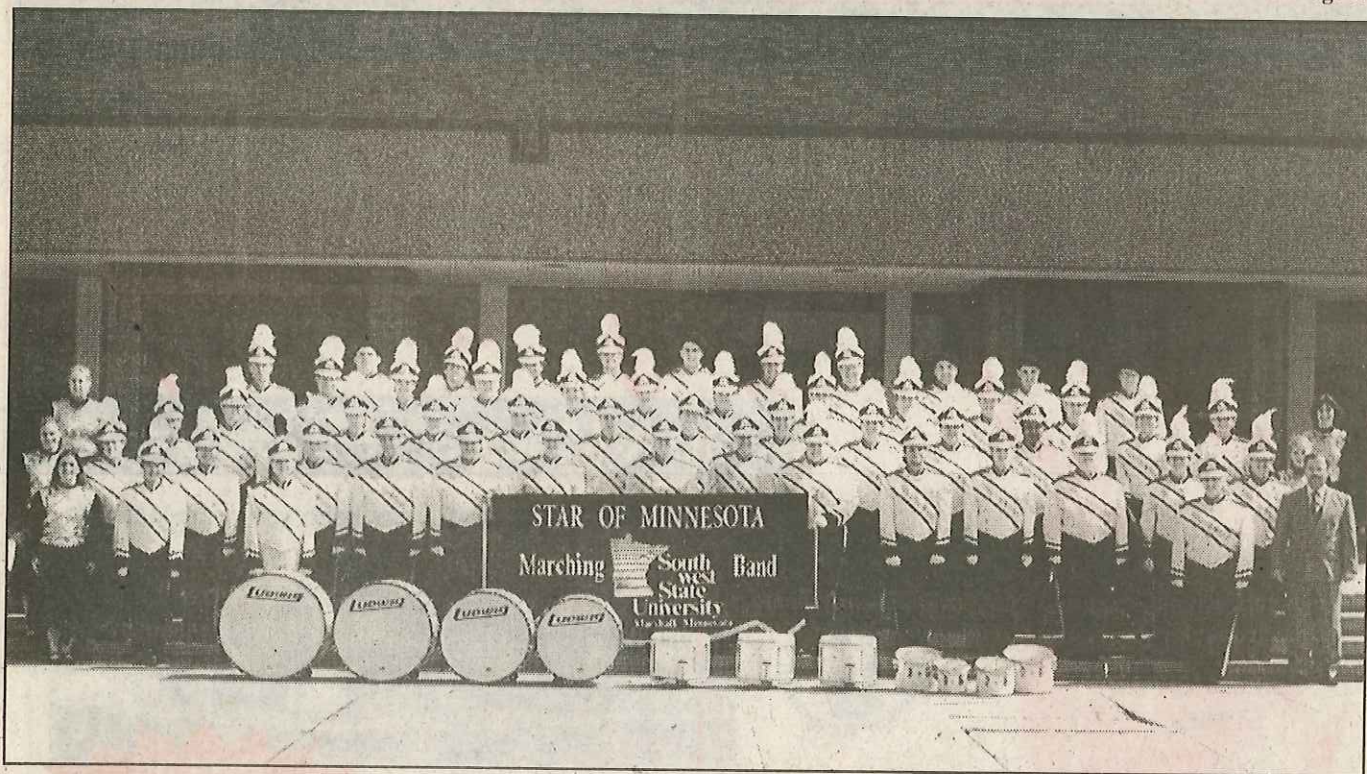


McDonald's®

I-90 and S. Hwy. 75, Luverne, Minn.

©1998 McDonald's Corp. All rights reserved. PLUS TAX. PRICES MAY VARY BASED ON INDEPENDENT OPERATOR PARTICIPATION.



SSU Marching Band is guest in parade

The Star of Minnesota Marching Band is beginning its third season at Southwest State University, Marshall

The Star of Minnesota Marching Band is beginning its third season at SSU. After a year of planning, the band became a reality in the fall of 1996, and has since made a significant musical contribution to the campus and southwestern Minnesota.

The membership is growing, and the enthusiasm and desire to succeed is contagious.

Through the end of October, the band performs at area high school football games, SSU football games, and other area parades and events. Parades this fall include the Tri-

State Band Festival in Luverne, and the Festival of Bands in Sioux Falls, S.D.

A highlight of the season is the Roof Raisin' In-

**"Our goal is to
achieve individually
and collectively,
and have fun
in the process."**

Marching Band.

Membership in the band is open to all students, regardless of major, and all receive a \$300 band scholarship per year for playing in the marching band and pep band. In 1997-98 the marching band, in only its second season was named best club/organization on campus.

door Marching Concert in the recreation athletic facility on Monday, Oct. 26. The drum major this year is Tricia Taylor, a former drum major of the Pipestone-Jasper Arrow

The band welcomes new students who will continue the excellent tradition that has been established. Our goal is to achieve individually and collectively, and have fun in the process.

Buying • Leasing • Selection • Service • Financing

Symphony of Savings!

Papik Motors • I-90, Luverne

"How many Papik stickers have you seen today?"



Service after the Sale

- FREE** pickup & delivery in the tri-state area
- FREE** shuttle service
- FREE** alignment check with every service visit
- FREE** loaner car
- FREE** car wash with every service visit
- FREE** coffee (Seattle's Best)

**Over 30
New 1999's
in Stock!
More Arriving Daily!**

**Over 15
New 1998's
Close-Out Prices!**

At Papik Motors we want to take care of all your automotive needs, so you will return again & again!



**A special invitation from
Janine Papik,
1998 Band Festival Parade Marshal,
to come & enjoy Luverne's 48th annual
Tri-State Band Festival
on Saturday, Sept. 26.**

**Papik
MOTORS**

**I-90 in Luverne, MN
507-283-9171 or 800-634-7701**

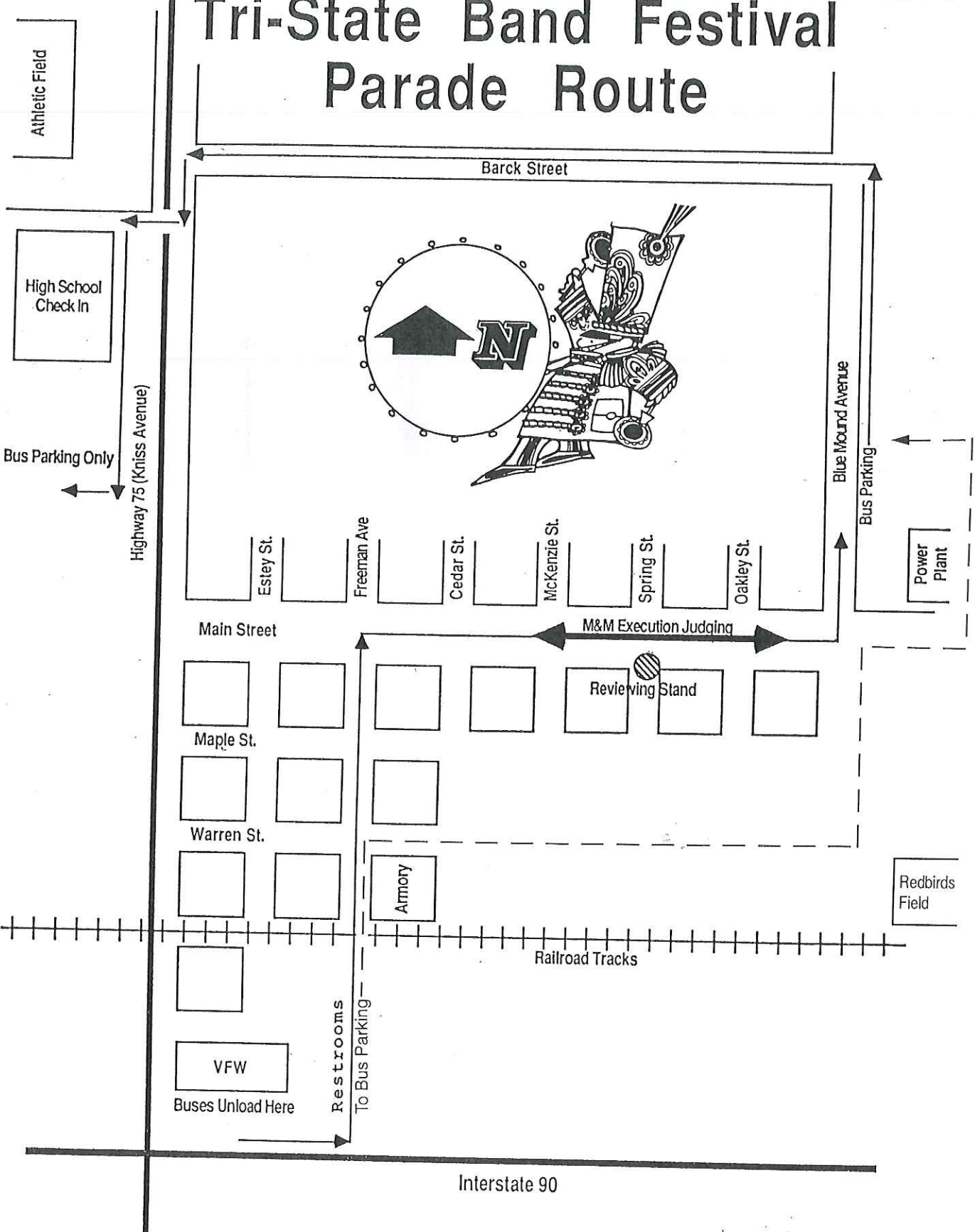
<http://www.Papik.com>

E-mail: Sales@Papik.com

**OPEN: M, T, W, & F 8 a.m. to 5:30 p.m.
TH 8 a.m. to 9 p.m. & S 8 a.m. to 4 p.m.**



Tri-State Band Festival Parade Route





**AREA CHAMBER OF COMMERCE
Convention and Visitors Bureau**

102 East Main • Luverne, MN 56156-1831 • Phone/Fax 507-283-4061

• Calendar of Upcoming Events •

- *Holiday Food Festival.....Oct. 31**
- *2nd Annual Winterfest.....Dec. 4-5-6**
- *Music Boosters Carnival.....Jan. 23**
- *Home Show.....April 17**
- *11th Annual Citywide Rummage Sale.....April 17**
- *Buffalo Days/Arts in the Park.....June 4-5-6**
- *37th Annual Hot Dog Night.....July 15**
- *Rock County Fair.....date to be set later**
- *Border-to-Border Triathlon.....Aug. 2-3**
- *49th Annual Tri-State Band Festival.....Sept. 25**

• Special Attractions •

- | | |
|--|---------------------------------------|
| *Rock County Indoor Pool & Fitness Center | *Rock County Community Library |
| *Blue Mound Ice Arena | *Carnegie Cultural Center |
| *Palace Theatre & Museum | *Luverne City Park |
| *Holy Trinity Church | *Schoneman Park |
| *Rock County Courthouse | *Blue Mounds State Park |
| *Hinkly House Museum | *Historic Walking Tour |
| *Rock County Museum | *Maplewood Chapel |

For more information, please contact:

Luverne Area Chamber of Commerce

102 East Main • Luverne, MN 56156-1831 • Phone/Fax 507-283-4061

E-mail: chamber@rconnect.com