

# **Luverne, Minnesota**

## **Welcomes You**



# **Tri-State Band Festival**

**September 30, 2000**  
**Luverne, MN**

## **Parade**

**10:00 a.m.**  
**Main Street**

**\$2.00**

## **Field**

**1:00 p.m.**  
**LHS Athletic Field**



# **Welcome** **to the** **50th** **Annual Tri-State Band Festival**

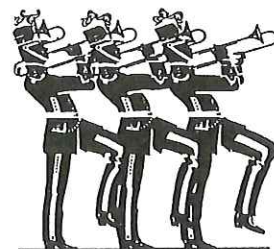
The Tri-State Band Festival has been an institution for the past 50 years. Other festivals have started over the years, many of them patterned after the Tri-State Band Festival. When the original founders established the festival it was for the purpose of promoting high school marching bands and was to be used as an educational experience. This original concept has been carried out for the past 50 years.

The Tri-State Band Festival is run by the Luverne Area Chamber of Commerce. It is not affiliated with or sponsored in any way by the Luverne Public Schools. All of the proceeds from the festival are put back into the festival or used for the promotion of marching band education.

The Luverne Area Chamber of Commerce sends out information to high school marching bands inviting them to attend the festival. Because the Luverne school district and the Luverne high school marching band are not responsible for the festival, the Chamber has invited the Luverne band to participate just as any other band in the competition.

Several of the area marching competitions are sponsored by a school, the local marching band, or their booster and therefore remove themselves from competition because of possible conflict of interest. There are other competitions that are sponsored by outside organizations and at these festivals, the local marching bands participate.

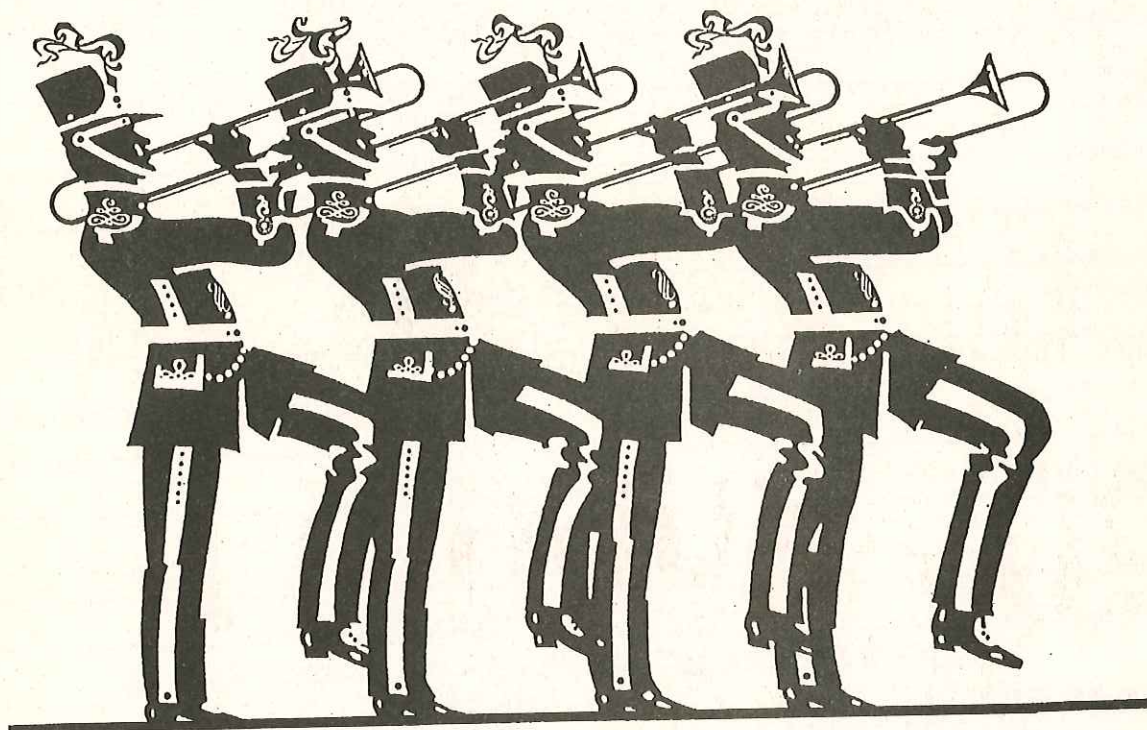
The Chamber of Commerce feels that any band who wishes to participate should have the opportunity. Over the years the Tri-State Band Festival has become one of the premier festivals in this part of the country. We hope that bands and band supporters will continue to participate in the Tri-State Band Festival.







# **50th Annual Tri-State Band Festival**



**September 30, 2000**  
**Luverne, Minnesota**

## **• PARADE •**

**Luverne  
Main Street  
Begins at 10:00 a.m.**

## **• FIELD •**

**Luverne High School  
Athletic Field  
Begins at 1:00 p.m.**

***Listed in Top 25 Festivals & Events  
in Minnesota!***

**A production of Tollefson Publishing  
Luverne, MN**



# Finals Score Sheet

## PARADE WINNERS

### CLASS A

1st Place \_\_\_\_\_

2nd Place \_\_\_\_\_

3rd Place \_\_\_\_\_

### CLASS AA

1st Place \_\_\_\_\_

2nd Place \_\_\_\_\_

3rd Place \_\_\_\_\_

### CLASS AAA

1st Place \_\_\_\_\_

2nd Place \_\_\_\_\_

3rd Place \_\_\_\_\_

### CLASS AAAA

1st Place \_\_\_\_\_

2nd Place \_\_\_\_\_

3rd Place \_\_\_\_\_

Tri-State Band Festival

Traveling Sweepstakes Trophy \_\_\_\_\_

## FIELD WINNERS

### CLASS A

1st Place \_\_\_\_\_

2nd Place \_\_\_\_\_

3rd Place \_\_\_\_\_

### CLASS AA

1st Place \_\_\_\_\_

2nd Place \_\_\_\_\_

3rd Place \_\_\_\_\_

### CLASS AAA

1st Place \_\_\_\_\_

2nd Place \_\_\_\_\_

3rd Place \_\_\_\_\_

### CLASS AAAA

1st Place \_\_\_\_\_

2nd Place \_\_\_\_\_

3rd Place \_\_\_\_\_

K.M. GETMAN Award \_\_\_\_\_

## AUXILIARY AWARDS:

Outstanding Drum Major \_\_\_\_\_

Outstanding Drum Line \_\_\_\_\_

Outstanding Auxiliary \_\_\_\_\_

Outstanding Horn Line \_\_\_\_\_

## Judging and Scoring

### TRI-STATE BAND FESTIVAL

#### TRAVELING SWEEPSTAKES TROPHY

This trophy is awarded for the band with top points over all. The winning band also receives a plaque. A band must win this trophy 3 consecutive years to retain it permanently. All winners will retain the plaque.

#### K.M. GETMAN ORIGINATORS AWARD

This award will be a special award made to the band which, throughout their Tri-State Band Festival participation, best exhibits the pride, spirit, enthusiasm, friendliness and unity of high school marching bandmen. In 1951 Ken Getman and other originators of the festival saw a need for an educational opportunity for bands to share ideas and see one another perform. This award commemorates the past ideas and future hopes of the Tri-State Band Festival. Judging for this award will be done by members of the Tri-State Band Festival Committee who have worked with and observed bands the entire day. The winner of the K.M. Getman receives a plaque.

#### SPECIAL UNIT AWARDS

Auxiliary Unit Plaques will be awarded in field competition to the top band in each category for drum major, guard/auxiliary, drum line and horn line. These plaques will be given in addition to the regular awards.

### PARTICIPATION

All bands that participate win placement trophies. Trophies will be presented after the field competition.

### ADJUDICATION

There are 6 judges evaluating each band: 1 Music Execution Judge; 1 Marching General Effect Judge; 1 Marching Execution Judge, Timing and Penalties Judge - field only; 1 Music General Effect Judge; 1 Percussion-Execution & Analysis Judge; 1 Auxiliary Judge.

### SCORING SYSTEM

Point allotment:

20 Points: Music-Execution

20 Points: Marching-General Effect

20 Points: Marching-Execution

20 Points: Music-General Effect

10 Points: Percussion-Execution & Analysis

10 Points: Auxiliary

The Tri-State Band Festival is sanctioned by the appropriate musical agencies in all states involved. It is also approved by the National Association of Secondary School Principals (NASSP) for their 2000-01 Advisory List of Contests and Activities.

Spacing of bands during the parade is determined by the need to properly evaluate each band in the judging area.

**Minnegasco®**  
**HOME**  
**SERVICE**  
**PLUS**





Crowds lined both sides of Main Street for the first Tri-State Band Festival in 1951.

Star Herald file photo

## 50 years of Tri-State Band Festival

The tradition of marching band excellence began with the Tri-State Band Festival back in 1951.

The idea was developed by several Luverne businessmen interested in music and marching bands in particular.

The original intent of the festival was to develop an educational experience for band members. This tradition has continued for 50 years.

The group worked to contact schools in the area including schools in Minnesota, South Dakota, and Iowa; hence the name, Tri-State Band Festival.

The original festival parade route began at the old elementary school building which is now the location of the City Centre apartments.

The parade route is actually the reverse of the current route. The bands formed around the school and then proceeded east from the elementary school and traveled west down Main Street.

The bands turned south on Freeman Avenue and marched to the fairgrounds. At the fairgrounds the bands received a lunch and then performed at the athletic field which is now the grandstand area of the fairgrounds.

From 1951 to 1957 baton twirlers and flag corps were judged separately in the school gymnasium. Medals were given to the winners, and they wore their medals in the parade that followed later in the morning.

Originally there were three judges, one each from

Iowa, Minnesota, and South Dakota. All comments were done with handwritten notes.

There was no parade judging, only field, in classes assigned as A, B, C, and CC. Performances were rated but not designed as a contest. In the years 1951 to 1953 a mass band selection was played at the conclusion of the festival.

As the decline of baton twirlers in bands increased, the committee decided in 1957 to drop the twirling contest.

In 1958 the festival was moved to the current high school athletic field, and judges' comments were recorded live on large reel-to-reel recorders.

One recorder was provided per judge. After the

presentation, the tapes were edited, clipped, and spliced and sorted onto a 1/2-hour reel that was mailed to each school the week after the festival.

This was a long and laborious task compared to the cassette tapes provided the same day at the current festivals. Other changes began to happen during the 1960s.

Classes were changed from A, B, C, CC to I, II, III, IV, V based on enrollment in grades 9-12.

In 1967 the festival and ratings started which gave way to a contest rather than a performance, and trophies were given for 1<sup>st</sup>, 2<sup>nd</sup> and 3<sup>rd</sup> places.

In 1970 a sweepstakes award was given for the com-



### History/From page 3

bined field and parade totals. The band festival was not a full-fledged contest.

Larger schools from the three states came including: Anoka, Rapid City, and Willmar.

In 1975 the number of judges increased to seven and a timer was added. All judges were members of the Association of Marching Band Judges.

In 1980 the United States Marine Drum and Bugle Corps of Washington, D.C., was the guest band. It was secured through the Minnesota legislative representatives including Walter Mondale. The drum and bugle corps was a hit and was invited back for several years.

The festival has grown and is now one of the premier high school marching events in the Midwest. We believe the festival is the longest running of its type in the nation.



Star Herald file photo from 1951

Tri-State Band Festival has a long history of coinciding with the first chilly days of fall.



**BAND FESTIVAL SPECIAL**

**25% OFF**

**Any One Item**

**New Fall Fashions or Shoes**

*If item is currently sale priced, we will give you the larger discount for best savings.*

*Coupon good Saturday, Sept. 30 only. Excludes Red Wing boots & Easy Spirit Shoes*

**- No tax on clothing or shoes -**

**COOK'S**

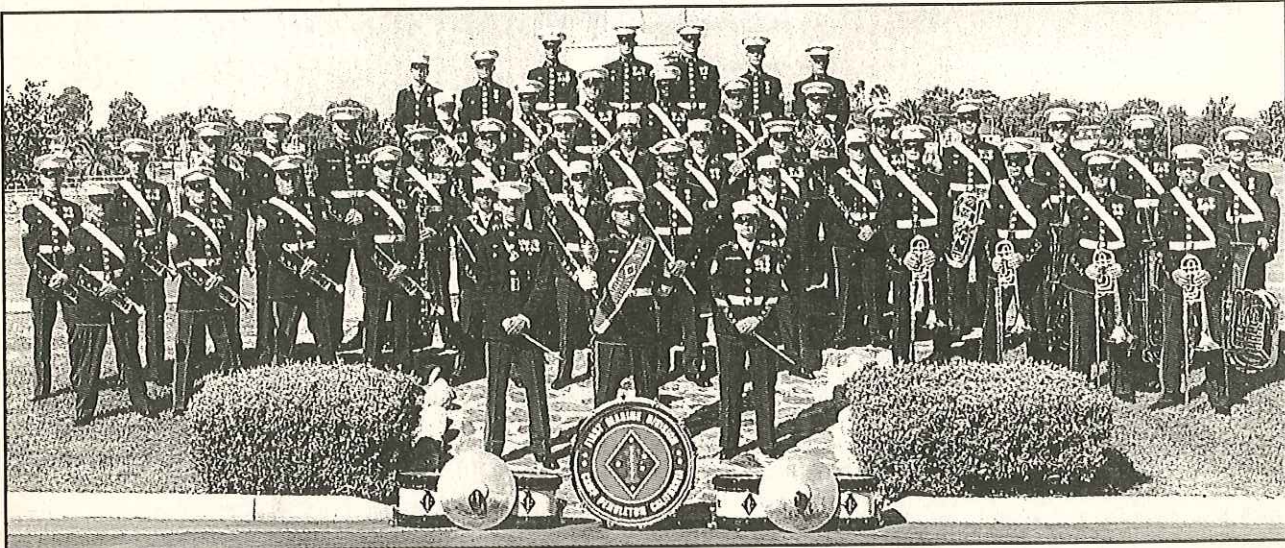
- CLOTHING FOR MEN
- LADIES WEAR
- MEN'S/LADIES SHOES

217 EAST MAIN STREET • LUVERNE, MN • 507-283-8224





# WELCOME TO LUVERNE'S 50TH ANNUAL TRI-STATE BAND FESTIVAL



## United States Marine Corps Band

*Chief Warrant Officer Two Michael W. Edmonson, band Director*

*Master Sergeant Teresa A. Browndorf, Enlisted Band Leader*

*Gunnery Sergeant George E. Schweizer, Drum Major*

The First Marine Division Band was organized during World War II in the Pacific Theater of Operations and is currently based at Marine Corps Base, Camp Pendleton, California.

Consisting of approximately 50 members, the mission of the First Marine Division Band is to provide musical support to the First Marine Division as well as, tenant commands aboard Camp Pendleton and the surrounding community. The Band fulfills its numerous musical requirements by performing as a Military Marching Band, Concert Band, and has the added capabilities of smaller ensembles such as Jazz Combo, Dixieland Band, Party Band, Woodwind Quintet, and Brass Quintet. The Band appears in over 400 performances annually.

Past highlights include the Annual Tournament of Roses Parade, The World Cup Soccer Finals Championship Match, and the American Film Institute's "Tribute to Steven Spielberg." More recently, the Band performed the 55th Anniversary Landing of Peleliu in the Palau Islands.

The Ceremonial Band is the most often used group of the 1st Marine Division Band. Providing musical support for military reviews, parades, and patriotic opening ceremonies, the band has traveled throughout the United States and the world. Locations such as Dallas, Houston, Cincinnati, and Philadelphia have been a few of the band's most recent trips. The Ceremonial Band has performed for Heads of State, foreign dignitaries, and stars of the entertainment industry. The band has performed at such notable events as the Gold Cup Soccer Championship, The Santa Barbara Polo Championship and the Tournament of Roses Parade.

All Marine Corps bands fulfill the purpose of preserving the values that comprise the unique and fundamental national strength and character of the United States. Whether performing on the march, or in concert, the First Marine Division Band continues this tradition, and remains the "Pride of the Division."



116 East Main Street, Luverne, MN  
507-283-2366 or Ag Dept. 507-283-9589  
MONEYLINE: 1-888-616-BANK (2265)  
Member F.D.I.C.



# Introducing the Band Festival judges...

The Tri-State Judging Association was formed more than 10 years ago by Tom Haugen to provide quality judging for the parade and field bands in the Tri-state area. Haugen draws from a pool of 25 professionals, all of whom have had success in the marching area.

## Today's judges are...

### Tom Haugen

Tom Haugen, Alexandria, is the head judge and marching and maneuvering general effect judge.

Haugen is an active clinician, guest conductor and judge in the concert, jazz and marching band areas. He has been a presenter at the Iowa, Nebraska, Minnesota and Canadian Bandmasters Conventions. His marching bands in Luverne, Cresco, Iowa, Charles City, Iowa, and Alexandria were first place or sweepstakes winners in the National Cherry Blossom Parade in Washington, D.C., Festival of States, St. Petersburg, Fla., Fiesta Bowl, Tempe, Ariz., and the Red River Exhibition in Winnipeg, Canada. In 1998 his Alexandria band marched in the Rose Parade, Pasadena, Calif. His bands were also sweepstakes winners in the Tri-State Band Festival in 1968, 1978 and 1979. Haugen is presently an adjunct faculty member at Luther College, Decorah, Iowa, where he supervises student teachers in the field of music education.

### Richard Dufault

Richard Dufault, Waseca, will judge music execution.

Dufault recently retired from teaching in the Waseca schools where he developed the Waseca band program into one of Minnesota's finest. His Waseca Marching Jays won numerous sweepstakes awards at the Tri-State Band Festival from 1980 through 1993. They also competed successfully in major competitions throughout the United States. Dufault is in constant demand as a guest conductor, clinician and judge. He presently serves as the music director of "Brass Works."

### Jim Smith

Jim Smith, Sioux Falls, S.D., will judge music general effect.

Smith is the band director at O'Gorman High School in Sioux Falls. He started the O'Gorman marching band 25 years ago and it is now one of the finer field show bands in the tri-state area. Prior to moving to O'Gorman, Smith taught at West Lyon High School in Inwood, Iowa, and developed a band that was a consistent class winner with the Tri-State Band Festival.

### Dave Haugen

Dave Haugen, Sioux Falls, S.D., will judge marching execution.

Haugen is the band director at Patrick Henry Middle School in Sioux Falls. Prior to his present position he taught at Anoka High School in Anoka and at Lincoln High School in Sioux Falls where he developed marching bands that were among the finest in the Midwest. These two bands won a total of nine sweepstakes awards at the Tri-State Band Festival between 1975 and 1990. His bands have also been sweepstakes winners at the National Cherry Blossom Festival in Washington, D.C., the Rose Festival in Cannon City,

Colo., and the Red River Exhibition in Winnipeg, Canada. His Lincoln High School band also marched in President Jimmy Carter's Inaugural Parade.

### Barry Peterson

Barry Peterson, Apple Valley, will judge percussion.

Barry Peterson's background as a performer, composer/arranger and educator covers a broad array of unique and varied experiences. Since the mid-'80s he has written for and instructed numerous top groups in the upper Midwest. Peterson has also been an integral part in the development and growth of the Minnesota Percussion Association. He is a 1981 and 1988 undergraduate at St. Cloud State University, and he is currently completing his master's degree at St. Mary's University. Peterson is presently teaching in the Rosemount-Apple Valley-Eagan School District in the Twin Cities. He participated in Tri-State competition in the late '70s as part of the Willmar High School Marching Cardinals.

### Ken Martinson

Ken Martinson, Nashville, Tenn., will judge guard/auxiliary.

In the past 18 years, Martinson has been involved with literally every facet of marching activity: performer, instructor, spectator, even manager and judge. His participation with the Tri-State Band Festival began in 1983 as a member of the Alexandria Jefferson High School Band.

His work as a color guard designer for 11 years earned numerous top guard awards. Martinson marched with a DCI "Top 12" drum and bugle corps and in 1991 founded the Vikingland Drum Corps Classic. He was the force behind the Vikingland Band Festival, helping develop it into Minnesota's premier summer marching band event. He has served on judging panels at parade and field competitions throughout the Midwest. In 1996 he founded MARCHING.COM, the information resource for band events across the United States.



- STEAKS
- SEAFOOD
- COCKTAILS

*"We steak our reputation on quality"*

- Open Mon. - Sat. 5 p.m.
- Meeting & Party Rooms
- Vern's Meat Market 9 a.m.-5 p.m., Mon.-Sat.

T.C. Dispanet  
S.C. Dispanet

I-90 & U.S. 75 So., Luverne, MN 56156  
507-283-9161





Photo by Lori Ehde

## 2000 Tri-State Band Festival Committee

Getting ready for the 50th Annual Tri-State Band Festival is no small task, and members of the Band Fest Committee have been preparing all year long. Pictured left to right, bottom row: Janine Papik, Mike Haakenson, Jim Boeve, Kevin Aaker, Pam Haakenson, Paula Thielbar and Dave Smith. Second row: Dianne Ossenfort, Glenda Bremer, Marcia Bork, Tara Zewiske, Linda Wenzel, Margaret Cook and Lorna Bryan. Third row: Bill Stegemann and Ron McClure. Missing from photo: Anna Van Batavia, Carla Enninga, Keith Aanenson, Dale Nelson and Mary Goheen.



### FLOORS & FURNITURE, INC.

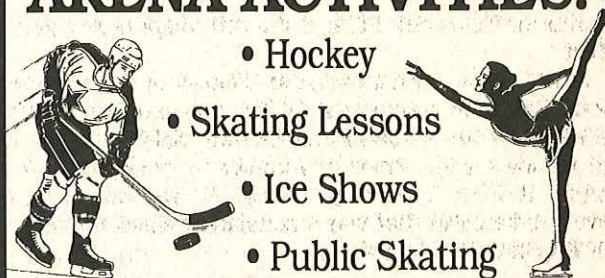
**Woody • Chris • Markell**  
*Stop in & see our selection of  
 floor coverings & furniture!*  
*Knowledge and service are our specialty!*

OPEN: Wed., Fri. - 9 a.m. to 5:30 p.m. 224 S. Splitrock Blvd., Brandon, SD  
 Mon., Tues. & Thurs. - 9 a.m. to 8 p.m. (Across from the High School)  
 Sat. - 9 a.m. to 5 p.m. Closed Sunday  
 605-582-2744

## Blue Mound Ice Arena

601 West Hatting • Luverne, MN  
 507-283-9138

### ARENA ACTIVITIES:



- Hockey
- Skating Lessons
- Ice Shows
- Public Skating

### Figure Skating Show, March 17

Ice Sheet: 85' x 200' • Seating Capacity: 500

Summer Roller Blading

Hourly Rental Available

**Building available for off season rental  
 during summer months.**

Mailing Address: P.O. Box 591, Luverne, MN  
 or call: 507-283-9138





## Terry's Trophies

Photo by Sara Quam

Terry Reisch, Luverne, assembles all the trophies for the Tri-State Band Festival. Reisch has owned Terry's Trophies since May 1995. The trophies have been displayed in the Chamber of Commerce window prior to competition.

*Visit  
Us...*



**Brandenburg  
Gallery**  
211 East Main Street  
Luverne, Minnesota  
507-283-1884

**TERRY'S  
TROPHIES**



Trophies & Plaques  
Custom Engraving  
Free Delivery  
Terry Reisch, owner  
211 S. Donaldson  
Luverne, MN  
507-283-2234

**We supplied and engraved the 2000  
Tri-State Band Festival Trophies!**

**Welcome to Luverne's  
50th Tri-State Band Festival!**

**RENFRO** *Variety Store*

***It's the FUN place to shop  
for all your needs!***

206 East Main Street, Luverne, Minnesota  
507-283-2628  
Margaret Vegge, owner



# Tri-State Band Festival evolves

We have seen a number of changes in the Tri-State Band Festival during the years since its inception.

Not only has the route and judging criteria been changed, but the schools themselves have also changed.

There are a number of consolidations through the years that have reduced the number of marching bands in the festival, but we believe it has also improved the quality of the bands participating.

Consolidations included Beaver Creek and Hills — now Hills-Beaver Creek; Hardwick and Magnolia — now consolidated with Luverne; Jasper, Holland and Woodstock — now consolidated with Pipestone/Jasper; Inwood and Lester — now part of West Lyon; Boyden and Hull — now Boyden-Hull; Brandon and Valley Springs — now Bran-

**On the field there are more and larger productions that have pushed many of the bands to a state of excellence we could never have dreamed of in 1951 and yet we have realized this excellence in 2000.**

don Valley; and Orange City and Maurice — now Maurice/Orange City/Floyd Valley.

Along with the schools, the type of band formations and uniforms have also changed.

Percussion units have changed to multiple drums, and include xylophone, tympani, and high tech sound equipment to accompany field as well as marching units.

The band styles have changed from the tight block style to larger bands with a more open style and a wide variety of music while march music was predomi-

nant in the past.

Bands used to have one or more baton twirlers and smaller flag units while today's bands have much larger auxiliary units that can take up to one-third of the entire band.

We have seen many bands change due to the influence of Drum Corps International.

We have also noticed a change in the bands to reflect some of the unique marching features presented by the U.S. Marine Drum and Bugle Corps during their appearances in Luverne.

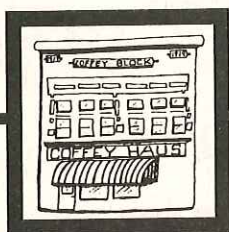
Another major change is

the development of the organization over the years.

When the first festivals were begun there was no secretary at the Chamber of Commerce; the entire event was coordinated by volunteers.

In the late 1960s with the establishment of the Luverne Chamber of Commerce, the band festival committee became an official part of the Chamber. With an official office and staff supporting the event, the festival began to grow and in 1980 received national accreditation.

The main trend we have seen over the years is the improvement of the bands themselves. On the field there are more and larger productions that have pushed many of the bands to a state of excellence we could never have dreamed of in 1951 and yet we have realized this excellence in 2000.



"Under the green awning"

## THE COFFEY HAUS

Open Monday-Friday 8 a.m. to 4 p.m.,  
Saturday 8 a.m. to 3 p.m.

- Lite Lunches
- Home Baked
- Soups
- Pastries
- Sandwiches
- Desserts
- Salads
- Breads
- Specialty Coffees & Teas
- Espresso Drinks

Dine In • Catering • Carry-out

111 East Main, Luverne, MN • 507-283-8676



Celebrating the  
50th Annual  
Tri-State Band Festival!

**Joseph Baloun**  
Investment Executive

Located  
at



**Minnwest Bank**  
Luverne

116 East Main  
507-283-2366

Securities provided by PRIMEVEST: • Not FDIC insured  
• No financial Institution Guarantee • May Lose Value.



102 E. Maple Luverne, MN  
507-283-9151  
Sam Berghorst

Lumber - Windows  
Cabinets - Siding  
Plywood - Doors  
Vanities - Cement  
Steel Paint - Paneling  
Fencing - Roofing  
Hardware - Ceiling Tile  
Insulation

OPEN Monday thru Friday 7:30 a.m. to 5:30 p.m.  
Saturday 8:00 a.m. to 12 noon



## Cragoe Real Estate

129 E. Main • Luverne, MN • 507-283-2647 or 1-888-627-2463

213 Maine Avenue • Adrian, MN • 507-483-2000

Gene Cragoe, broker – Home phone: 507-283-1839

Lowell Binford, Bob Zinnel, Leon & Mary Pick, Ida Reverts,  
Bryan Fodness, Dan Amborn & Andy Steensma



**Homes • Acreages**  
**Commercial • Land • Rentals**  
**Lake Property • Mobile Homes**

E-mail: gene4430@rconnect.com Website: www.cragoe.com

## 2000 special awards

As a special feature of the 50th Annual Tri-State Band Festival, the festival committee will recognize bands that have participated in the festival for 25 years or more.

The strength of the festival is in the bands that have continued to support the event by their presence.

A great deal has changed since the first festival, but one thing remains. We still host the finest marching bands in the Tri-State area, and we wish to recognize the following bands for their continued support.

**LUVERNE HIGH SCHOOL** — 50 years\*

**PIPESTONE-JASPER** — 50 years\*

**SIOUX CENTER** — 44 years\*

**ADRIAN** — 43 years

**WEST LYON** — 36 years

**WORTHINGTON** — 36 years\*

**SIBLEY-OCHEYEDAN** — 31 years

**BRANDON-VALLEY** — 27 years

\*Denotes bands at the first festival in 1951.



Welcome to the  
**Tri-State  
Band Festival!**

\*\*\*\*\*

**NELSON AUTOMOTIVE**

126 West Main Street • Luverne, Minnesota  
507-283-8659

Welcome Participants and Spectators  
to the Tri-State Band Festival

**Cash 24 hours a day with our**



**YOU NEED IT**

**advantage**  
24 Hour Teller

**For your convenience - both locations**

**Jubilee Branch**

**205 E. Warren • 449-5888**

Mon. - Fri. 9 a.m. to 7 p.m.

Sat. 9 a.m. to 2 p.m.

**Main Office • S. Hwy. 75 • 283-9133**

Mon. - Fri. 8:30 a.m. - 4 p.m. Lobby

Mon. - Fri. 8 a.m. - 5:30 p.m. Drive-up

Sat. 8 a.m. - 12 noon Drive-up



**First  
National  
Bank**

Poestone • Luverne • Magnolia • Beaver Creek

**Bringing You the Best!**

Member FDIC



# Button design was a community competition

By Lori Ehde

Luverne native Kevin Van Westen submitted the winning design for this year's Tri-State Band Festival button.

Band Festival buttons, which serve as admission to field competition, are normally designed by high school art students, who compete for the honor.

This year, in honor of Tri-State Band Festival's 50<sup>th</sup> Anniversary, the Band Festival Button Committee opened the design contest to the public.

Designs must have incorporated the words: 50<sup>th</sup> Annual Tri-State Band Festival, Luverne, Minnesota, September 30, 2000.

Three colors plus white could be used. And no cardinal logos were allowed, because the Tri-State Band Festival is a community event and should not be promoted as a school-sponsored activity.

Entries were judged by the Band Festival Button Committee, and Van Westen received a \$50 Chamber gift certificate for his winning effort.

Pam Haakenson, chair of the Button Committee, said it's difficult to say specifically what judges look for.



Kevin Van Westen,  
winning designer of  
2000 band button

"A lot of it boils down to the one that catches your eye," Haakenson said. "If the button has a musical theme to it, that's something we look for."

Senior high art students plus graphic arts students were specifically invited to enter the community contest.

Buttons are sold prior to and during the festival for \$3, and the same button design is printed on Band Fest T-shirts, also sold prior to and during the event for \$10.

OFFERMAN & COMPANY  
LUVERNE COMMODITIES  
STOCKS & BONDS  
IRAs

**Robert Loosbrock**

REGISTERED REPRESENTATIVE

313 E. Main  
Luverne, MN 56156  
Call Collect  
507-283-9575

Call Toll Free  
1-800-950-4561



**MINN-I-KOTA  
VETERINARY CLINIC**

*Veterinary Care for Large & Small Animals*



602 East Main  
Luverne, MN 56156

**507-283-8507**

Dr. Marlen D. Van Otterloo

**Welcome to the 2000  
Tri-State Band Festival!**



**Eat Healthy.  
Try one of our  
low fat subs!**

**SUBWAY**

I-90 & S. Hwy. 75,  
Luverne, MN  
507-283-4133

9 a.m. to 12 p.m. Sun. - Thurs. • 9 a.m. to 2 a.m. Fri & Sat.

**SO JO's**  
**Sportswear**  
and Embroidery

Sweaters • Letter Jackets • Socks  
• Nylon Jackets • T-Shirts  
• Sweatsuits • Hats  
in YOUR school colors!

**COMPUTERIZES EMBROIDERY  
for teams, parents or individuals!**

107 W. Main  
Pipestone, MN  
507-825-2906  
Sue Fey  
Home 777-4164



# Quilt commemorates 50 years of Tri-State Band Festival buttons

Local volunteers have created something special for the 50<sup>th</sup> anniversary of the Tri-State Band Festival.

The quilt has an area of 54 blocks, with 50 of the blocks filled with pictures of the Tri-State Band Festival buttons from each year since it began.

The idea for the quilt came from Linda Wenzel, a member of the Tri-State Band Festival Committee.

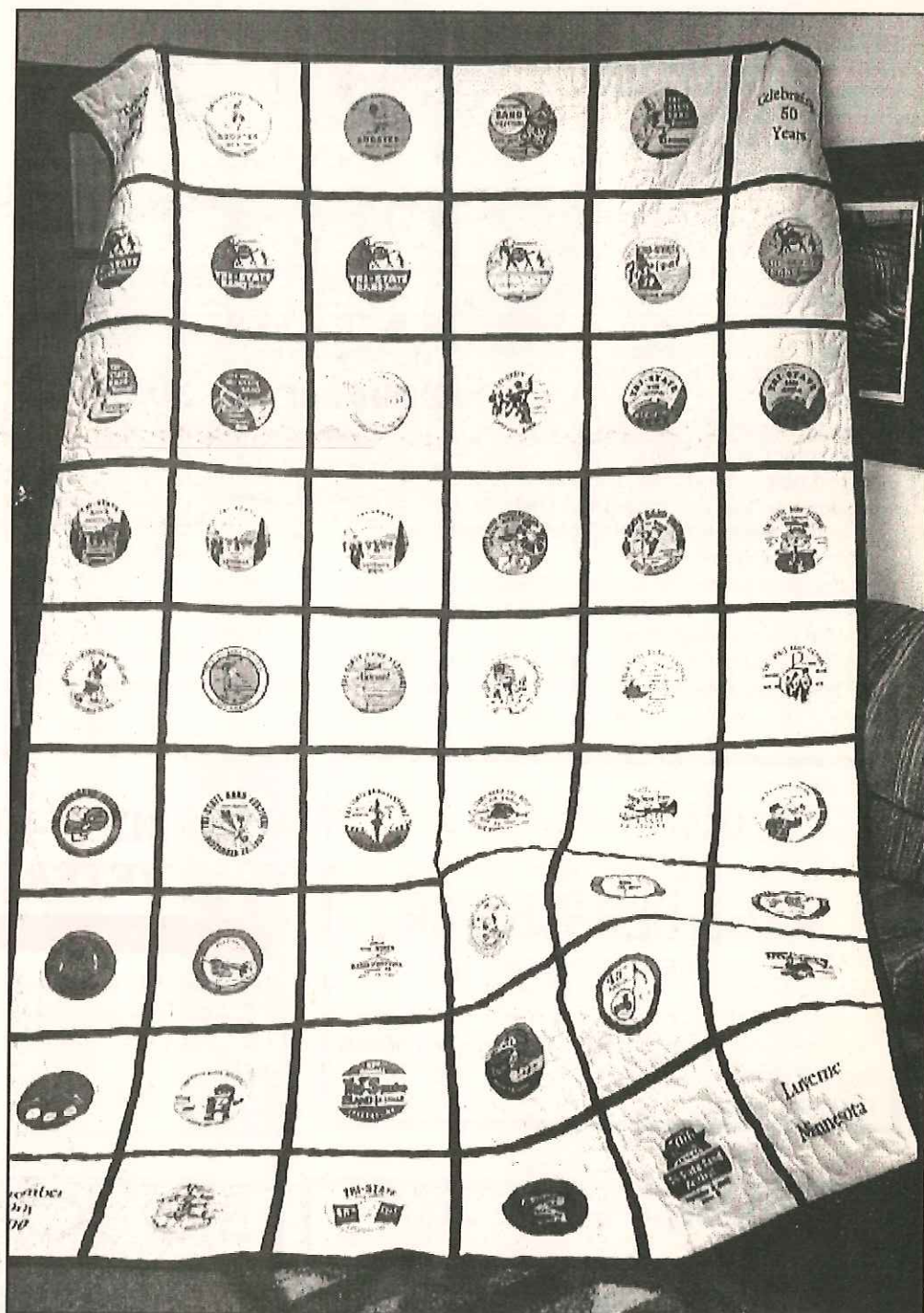
"We tried to think of something unique to help celebrate this momentous occasion," Wenzel said.

"As far as we know, this is the oldest existing band festival in the United States."

All of the work on the quilt was done by volunteers.

Community members Jim Juhl of Myhre Studio and Dave Haugom of Print Express helped format the Tri-State button pictures so that they could be put on the quilt.

Blue Mound Quilters Club members sewed the pieces together. Darlene Fick, Dorothy Texel, Elaine Mann, Carol Svingen, Millie Lais and Deb Scholten did most of the work in



one evening. Millie Lais sewed the blocks together.

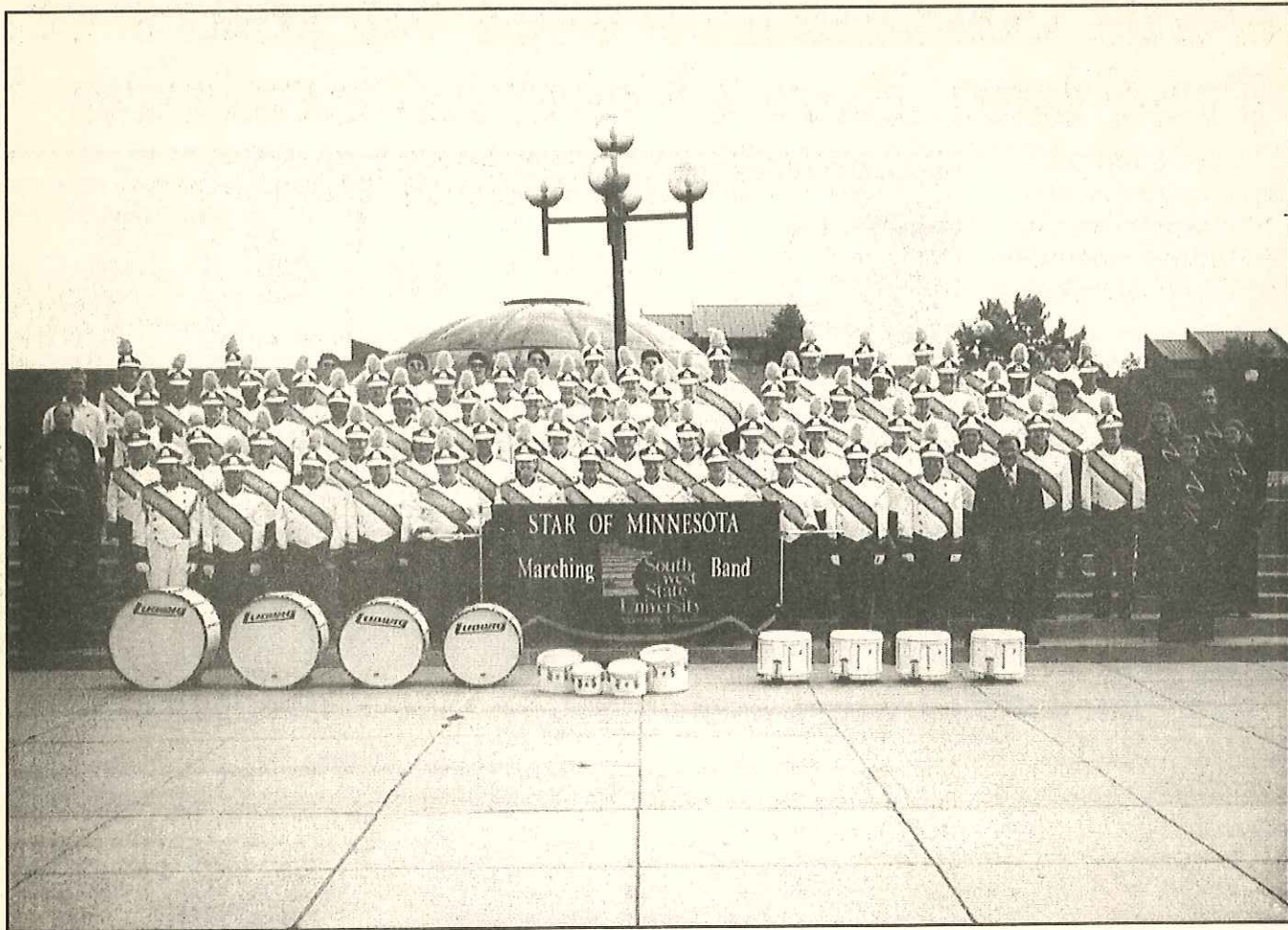
The quilt is displayed in the Luverne Style Shop window

and will be raffled off at the Tri-State Band Festival.

Tickets are \$1 with the money from the raffle going toward

the festival's bleacher fund. The Festival Committee is hoping to help buy new bleachers for the Luverne football field.





## Southwest State University Marching Band

The Southwest State University Marching Band, Marshall, Minn., marks its fifth year in operation. Its numbers have increased from 35 students to 100 in the year 2000.

This past year the band traveled to Sydney and Melbourne, Australia.

The band performed for more than 65,000 people at the Australian rules game on May 13 at the Melbourne

Cricket Ground.

The band will perform on the street and field during the 50th Annual Tri-State Band Festival. The SWSU band will give a field performance during the afternoon break of the field competition.

The director of bands is Dr. Alan Taylor, and Allison Fick of Luverne is a member of the SWSU marching band.

**Good Luck to all Band Festival Participants!**

**Vander Kooi Law Office, P.A.**

Benjamin Vander Kooi, Jr.  
Attorney at Law  
127 East Main, P.O. Box 746  
Luverne, Minnesota  
**Phone 507-283-9546**

**Luverne Family Chiropractic**

*accident • rehab • wellness*



**Dr. Jeff Priebe**



**Dr. Terry Poe**

**Office Hours:**

Mon., Tues., Wed., Fri. - 8 a.m. to 5 p.m., Thursday - 2 p.m. to 7 p.m.

109 S. Freeman • Luverne, MN • 507-283-9484



## Honorees from past serve as 2000 Parade Marshals

As part of the 2000 Tri-State Band Festival the festival committee decided that instead of selecting one parade marshal for this year's event we would invite all past parade marshals to return to the festival and be our parade marshals to emphasize the diversity and longevity of the festival.

The Tri-State Band Festival began having a parade marshal in 1968 with Dr. G.N. Getman, one of the original founders. For a few years there were no parade marshals after Getman, but in 1974 it was decided to have a parade marshal every year. That individual would be someone who has worked with the festival over the years and helped to develop it as it is today.

With that in mind the 2000 committee invited past marshals for this year's festival, and the following have accepted and will be part of the parade and field events.

•**Dr. Bob Keitel (1975):** One of the original forces behind the band festival, now retired, he still works with the festival when asked and provides much of the history of the early festival.

•**Marcia (Herreid) Flannery (1976):** Marcia is the daughter of the late Lloyd Herreid, one of the originators of the festival.

•**Catherine Untiedt Dibbern (1977):** Catherine is the widow of Wayne Untiedt, one of the original band festival members.

•**Ferd Luebke (1978):** Ferd was one of the festival originators. He lives in Wisconsin and still returns to the festival whenever he can.

•**Barb Eitreim McClure (1980):** Barb is the daughter of Harvey Eitreim, former superintendent of schools in Luverne. Barb resides in Brooklyn Center.

•**Virginia Von Holt (1982):** Former secretary of the Luverne Chamber, she served as the first official staff of the festival and is now retired and lives in Sioux Falls, S.D.

•**Lester Mahaffay (1983):** Les was junior and senior high band director for the Luverne school district and is now retired from teaching. He led a Luverne marching band down th street for 20 years. He now plays tuba for the Sioux Empire Brass Society.

•**Martha (Sellen) Nuffer (1984):** Martha was a baton twirler with the Luverne band in the '50s and was one of the premier twirlers in the area. She was responsible for the success of twirlers. She lives in Papillion, Neb.

•**Tom Haugen (1986):** He participated in the festival for 11 years as a director and another 15 years as a judge. Tom is currently the head judge for the Tri-State Band Festival. He and his wife reside in Alexandria.

•**Tim Connell (1988):** Tim served on the committee for many years and continues to support the festival as a backer. Tim is a district judge representing southwest Minnesota.

•**Ray Gibson (1989):** Ray is now retired. For many years he served on the committee and coordinated many of events with the National Guard in Luverne.

•**Marilyn Bloemendaal (1990):** Owner of Buffalo Ridge Insurance, Marilyn served on the committee for many years and is still an active supporter.

•**Art Wulf (1991):** Art has been a long-time committee member of the festival.

•**Richard Johnson (1992):** Richard is retired and lives in Minneapolis. He served as a band director in Luverne in the late '50s and '60s.

•**Lucille Getman (1993):** Lucille is the widow of Ken Getman, one of the original founders of the festival. Lucille annually presents the K.M. Getman Award at the festival.

•**Rolf Berg (1994):** Rolf is a Culligan dealer and resides in north Texas. He served on the band festival committee for many years while living in Luverne.

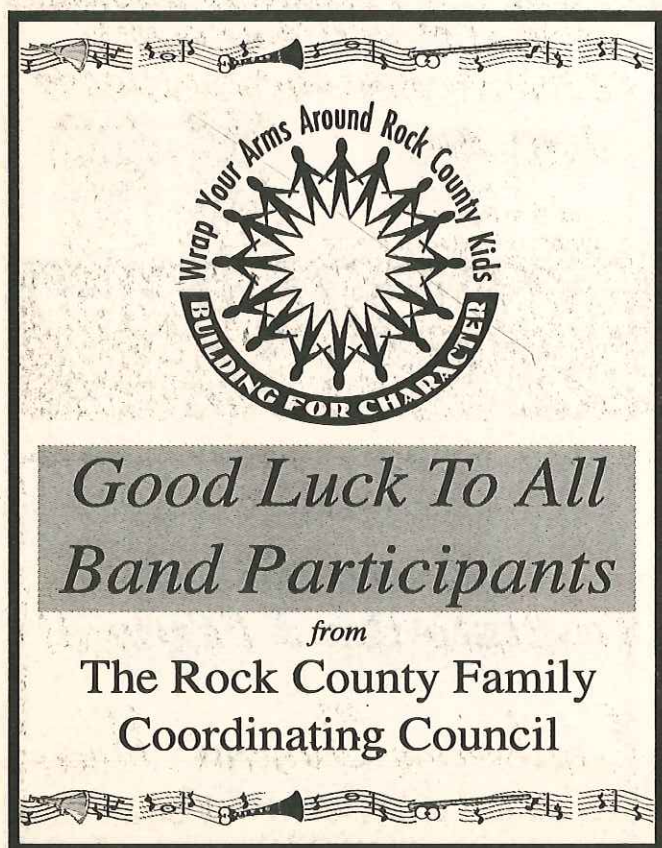
•**Myrna Norton Phelps (1995):** Myrna was music director for Luverne Elementary school for many years and gave many of our local musicians their start. She is retired and presently lives in Fairmont.

•**Norma DeJongh (1996):** Norma served as Chamber executive director for 17 years.

•**Keith Aanenson (1997):** Keith was the city police chief and was a band festival committee member for many years. He helped with traffic and logistic problems.

•**Janine Papik (1998):** Janine has been with the festival in a number of capacities. While in school she was a baton twirler. She returned as a band director in Magnolia and now serves on the festival committee.

•**Barb Weber (1999):** Barb served on the festival committee for many years.







## Luverne Middle School Band hosts 2000 Tri-State Band Festival

The host band for the 50<sup>th</sup> Tri-State Band Festival is the Luverne Middle School Band. The seventh- and eighth-graders in the band will march in the parade. They will play the selection "Ameristar" by Mike Story. The band is directed by Mary Goheen.



### Bill's Exhaust Pros

404 South Kniss, Luverne, MN

Phone 507-283-0025 or

Mon.-Fri. 7:30 a.m.-5:00 p.m., Saturday 7:30 a.m.-12 Noon



"Only what you need. . .  
at a price guaranteed"



**For all of your Houseware,  
Appliance and Hardware Needs**

**Just Ask  
RENTAL**

Tru-Test Paints with  
Computerized Color Matching



### Luverne True Value

S. Hwy. 75, Luverne, MN 507-283-8068

MOST MAJOR CREDIT CARDS ACCEPTED

## "HEY, CULLIGAN MAN<sup>®</sup>"

**Sales - Rentals - Service**

Reverse Osmosis Drinking Water

Softeners & Filters

Bottled Water

**Culligan** Softener Salt  
Trust The Experts

114 N. Kniss, Luverne, MN 507-283-9105



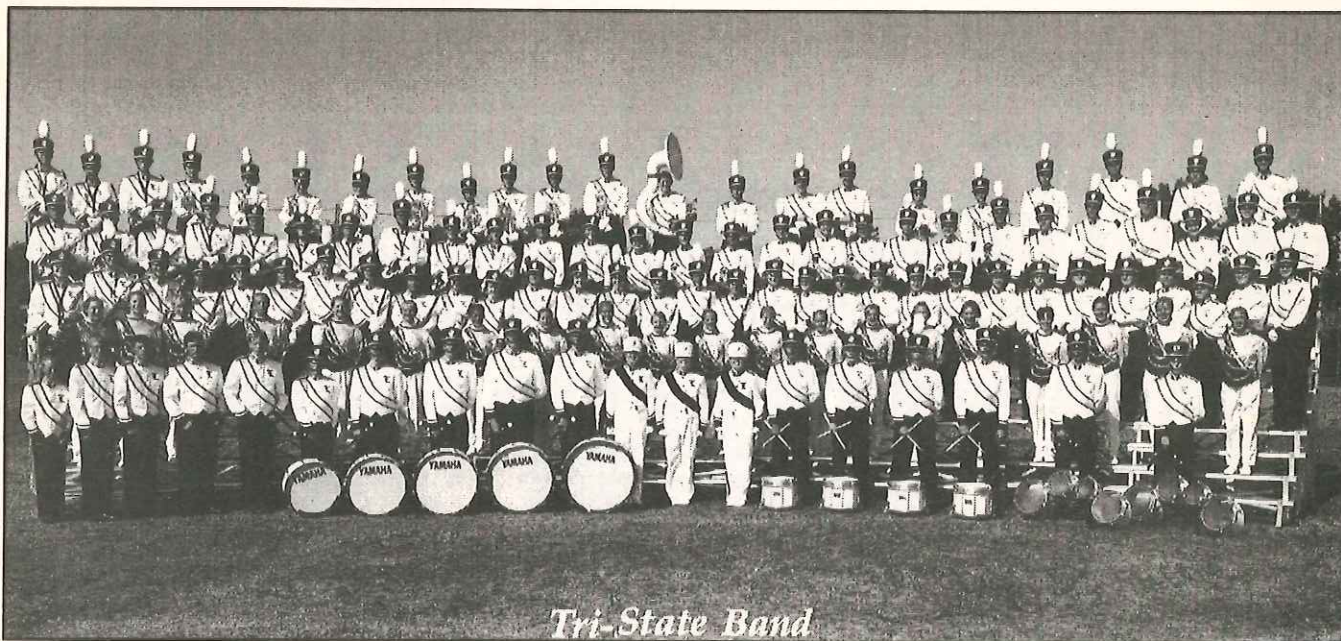
**Good Luck to the  
participants in the  
Tri-State Band Festival!**

### Engebretson Funeral Home

Serving Rock County for over 40 years.

507-283-2777



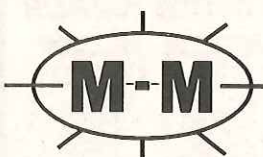


*Tri-State Band*

## Luverne, MN

The Luverne High School Band is under the direction of Dale Nelson and Mary Goheen. Drum majors are Dan Antoine, Nicole Fuerstenberg and Laura Vogt. Senior High School enrollment is 460 students.

## SUPPORTS THE TRI-STATE



## BAND FESTIVAL

**SO. HWY 75**  
**507-283-2075**

**STORE HOURS:**  
Mon.-Fri. 8 a.m. to 8 p.m.;  
Sat. 8 a.m. to 5 p.m.;  
Sun. Noon to 5 p.m.

## Green Lantern

CAFE & STEAK HOUSE

Hardwick, MN  
669-2601

## Green Lantern

BAR

Q-Ball, owner

Hardwick, MN  
669-2601

### Hours:

Cafe & Bar Open 7 Days a Week  
Steakhouse Open Friday - Sunday 5 to 10 p.m.  
Brunch Buffet - Sunday 10 a.m. to 1 p.m.

## Enjoy the 2000 Tri-State Band Festival!

## Exchange State Bank of Hills

"A Good Bank in a Good Community"

Hills, Minnesota 56138  
507-962-3250

Steen Branch  
507-855-2357



**HILLS BRANCH LOBBY HOURS:** Monday, Tuesday, Wednesday and Friday - 8:30 a.m. to 4:30 p.m. (Open over noon), Thursdays 8:30 a.m. to 7:00 p.m. (Open over noon)

**HILLS BRANCH DRIVE-UP WINDOW HOURS:** Monday, Tuesday, Wednesday and Friday - 8:00 a.m. to 5:00 p.m., Thursday 8:00 a.m. to 7:00 p.m.  
**STEEN BRANCH HOURS:** Mon.-Fri. 10:00 a.m. to Noon; 1:00 p.m.-2:00 p.m.



## Stop in for Great Country Cookin' & "Down Home" Hospitality!

Kids' Menu & Senior  
Citizens' Menu

Call 507-283-4458  
for take-out



Large Homemade  
Cinnamon Rolls

I-90 & Hwy. 75, Luverne  
Best Pancakes in Town!  
**BREAKFAST ANYTIME**

Raney & Jan Israelson, owners

Open 7 Days a Week: Sun. thru Thurs. 6 a.m. - 10 p.m., Fri. & Sat. 6 a.m. - 11 p.m.





## Adrian, MN

The Adrian High School Marching Dragons Band has performed at the Tri-State Band Festival for 43 years. It will participate in parade only. The band is under the direction of Laura Schoolen. Andrea Burzlaff is drum majorette. School enrollment is 207 students.

## Welcome to the Tri-State Band Festival

All-You-Can-Eat

# PIZZA & CHICKEN BUFFET



Good Things Everyday!

110 E. Main, Luverne

507-283-2379

Free Local Delivery

11 a.m. to 2 p.m.-Saturday, Sept. 30

Includes pizza, chicken, broasted potatoes and salad bar



## FOOD SHOP

915 S. Kniss, Luverne

507-283-4162

Open 24 hours 7 days a week.



## Herman Motors

Celebrating 68 Years in Luverne

•Fords •Mercurys •Ford Trucks



312 East Main • Luverne, MN

507-283-4427 or 1-888-283-4427

[www.hermanmotor.com](http://www.hermanmotor.com)

after hours call Joel Herman: 507-283-4148





### Brandon, S.D.

Brandon Valley High School has had 19 years of experience with the Tri-State Band Festival. Bob Goheen directs the band and is assisted by Kevin Kessler and Bruce Wildes. Drum majors are Monica Wulf, Lindsay Thoreson, Sarah Thoreson and Crystal Meyer. The school's enrollment is 800.

### Tri-State Band Festival Button



# SALE

To all customers wearing a Tri-State Band Festival Button, The Luverne Style Shop will discount:

# 10% off

the purchase of any dress, blouse, slack, skirt, sweater, purse, hat or knitwear item!

• Sale good thru Saturday, Sept. 30 •

Buy your Band Buttons at the Luverne Area Chamber of Commerce Office.

## Luverne Style Shop

202 East Main Street • Luverne, Minn

## Palace Theatre

104 East Main • Luverne, MN • 507-283-8526

Adults \$4.50 • Senior Citizens (55 & up) \$3.50  
Children (12 & under) \$3.50

Open every evening  
Saturday & Sunday Matinees

Enjoy FREE REFILL on pop & popcorn

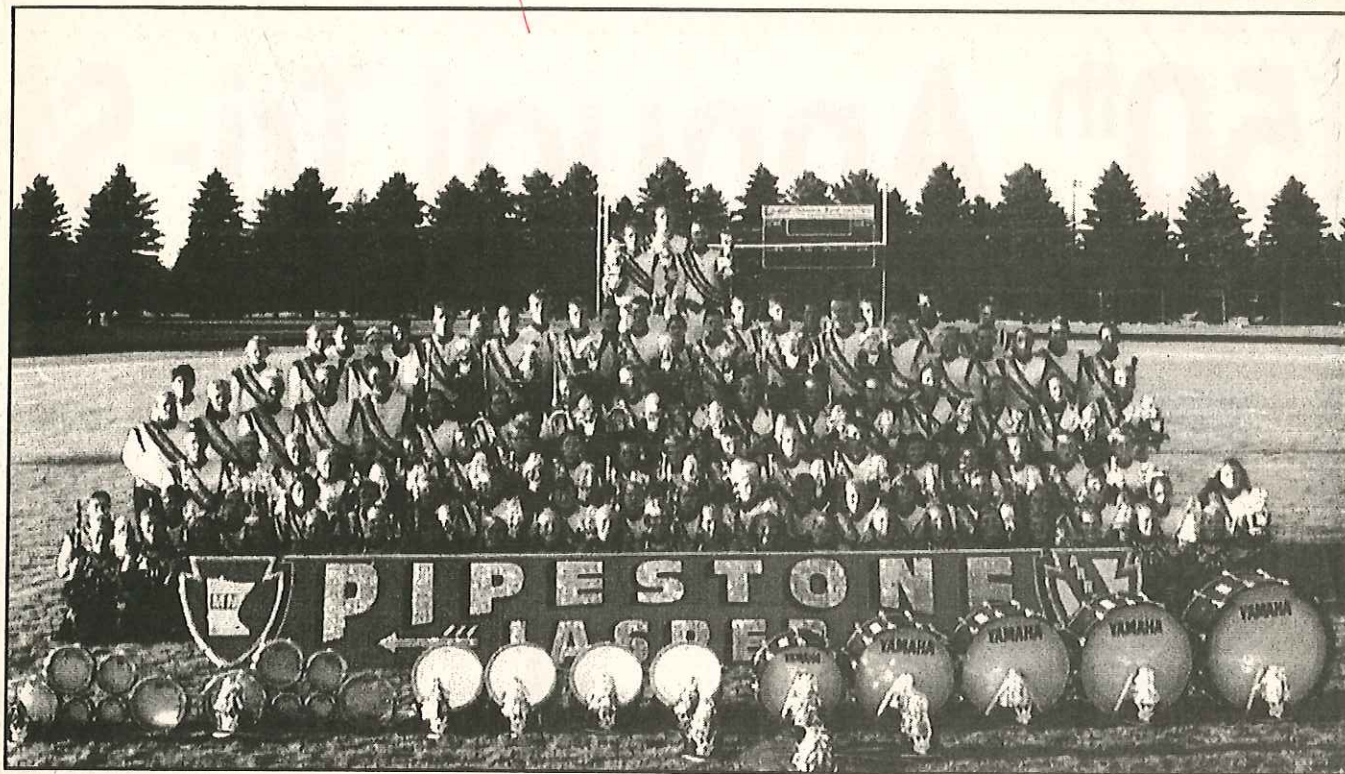
*Welcome to the  
50th Annual  
Tri-State  
Band Festival*



**Ferrellgas**

South Hwy. 75  
Luverne, MN  
1-800-457-9191  
or 507-283-2325





## Pipestone, MN

Pipestone-Jasper High School has competed at the Tri-State Band Festival every year since its beginning in 1951. The band is directed by Dan Start and Georgia Taylor. Drum majors are Pamela Schulze, Kia Martinsen and Laura Foster. The band will compete in both parade and field exercises. School enrollment is 465 students.

## Welcome to Luverne's Tri-State Band Festival!

- New Shipments  
Coming Weekly •
- Quality Name Brands at  
Less Than Retail Price •

**Lowest Prices  
Around!!**



**American**  
Salvage & Surplus

Downtown Hills, MN

507-962-3416

(in the former S & R Grocery Store)

Mon. - Fri. 9 a.m. to 7 p.m.,

Sat. 9 a.m. to 4:30 p.m.



**The Final Touch**  
A Complete Home Decor Store

222 E. Main, Luverne, MN • 507-283-2565

Just In! New Redlin Collectibles!

- Cotton Throws • Prints
- Clocks • Plates • More!

Unique LIGHTED PICTURES

**A Complete Home Decor Store**

**ADMIT ONE**

**Luverne  
Drive-In Theatre**

South Hwy. 75 • Luverne, MN

507-283-0007



**Concession Stand  
featuring:**

- Pop • Popcorn
- Hot dogs
- Barbecues
- Pizza
- Nachos

**ADMIT ONE**



# 50<sup>th</sup> Annual Tri-State

**PARADE TIME: 10 a.m. Main Street**

## PARADE ORDER

VFW & Legion Color Guard  
Luverne Middle School Band (Host)  
Past Parade Marshals

## BAND ORDER

1. George - Little Rock, IA.....A
2. Garretson, SD.....A
3. Adrian, MN.....A
4. West Lyon - Inwood, IA.....A
5. Murray County Central - Slayton, MN.....A1
6. South O'Brien H.S., Paullina, IA.....A1
7. New Richland - H-E-G, MN.....A1
8. Tracy Area, MN.....A1
9. Sioux Center, IA.....A1
10. Pipestone - Jasper, MN.....AA
11. Lennox, SD.....AA
12. Luverne, MN.....AA
13. Worthington, MN.....AAA
14. Brookings, SD.....AAA
15. Crestwood H.S. - Cresco, IA.....AAA
16. Brandon - Valley, SD.....AAA
17. Waseca, MN.....AAA
18. Washington H.S. - Sioux Falls, SD.....AAAA
19. Lincoln H.S. - Sioux Falls, SD.....AAAA

Southwest State University - Marshall, MN (guest band)

1st Marine Div. Marching Band - Camp Pendleton, CA (guest band)



**Need help?** See any T  
committee  
wearing white jacke

**No coolers allow**

**Handicappe  
and seating**

# Con

One Ro



# ate Band Festival

**FIELD EXERCISES: 1 p.m. Luverne H.S.**  
(Field Gates will open at noon)

## FIELD ORDER

12:45	National Anthem - Southwest State University	
1:00	Sibley - Ocheyan, IA.....	A
1:15	South O'Brien H.S., Paullina, IA.....	A
1:30	Parkston, SD.....	A
1:45	Sioux Center, IA.....	A
2:00	West Lyon - Inwood, IA.....	A
2:15	Pipestone - Jasper, MN.....	AA
2:30	Lourdes H.S. - Rochester, MN.....	AA
2:45	Lennox, SD.....	AA
3:00	Luverne, MN.....	AA
<b>3:15 - 3:45 Break - Southwest State University</b>		
3:45	Brookings, SD.....	AAA
4:00	Crestwood H.S. - Cresco, IA.....	AAA
4:15	Brandon - Valley, SD.....	AAA
4:30	Waseca, MN.....	AAA
4:45	Washington H.S. - Sioux Falls, SD.....	AAAA
5:00	Lincoln H.S. - Sioux Falls, SD.....	AAAA
5:15	1st Marine Division Band	
5:45	Awards Ceremony	



-State Band Festival  
member  
with red lettering.

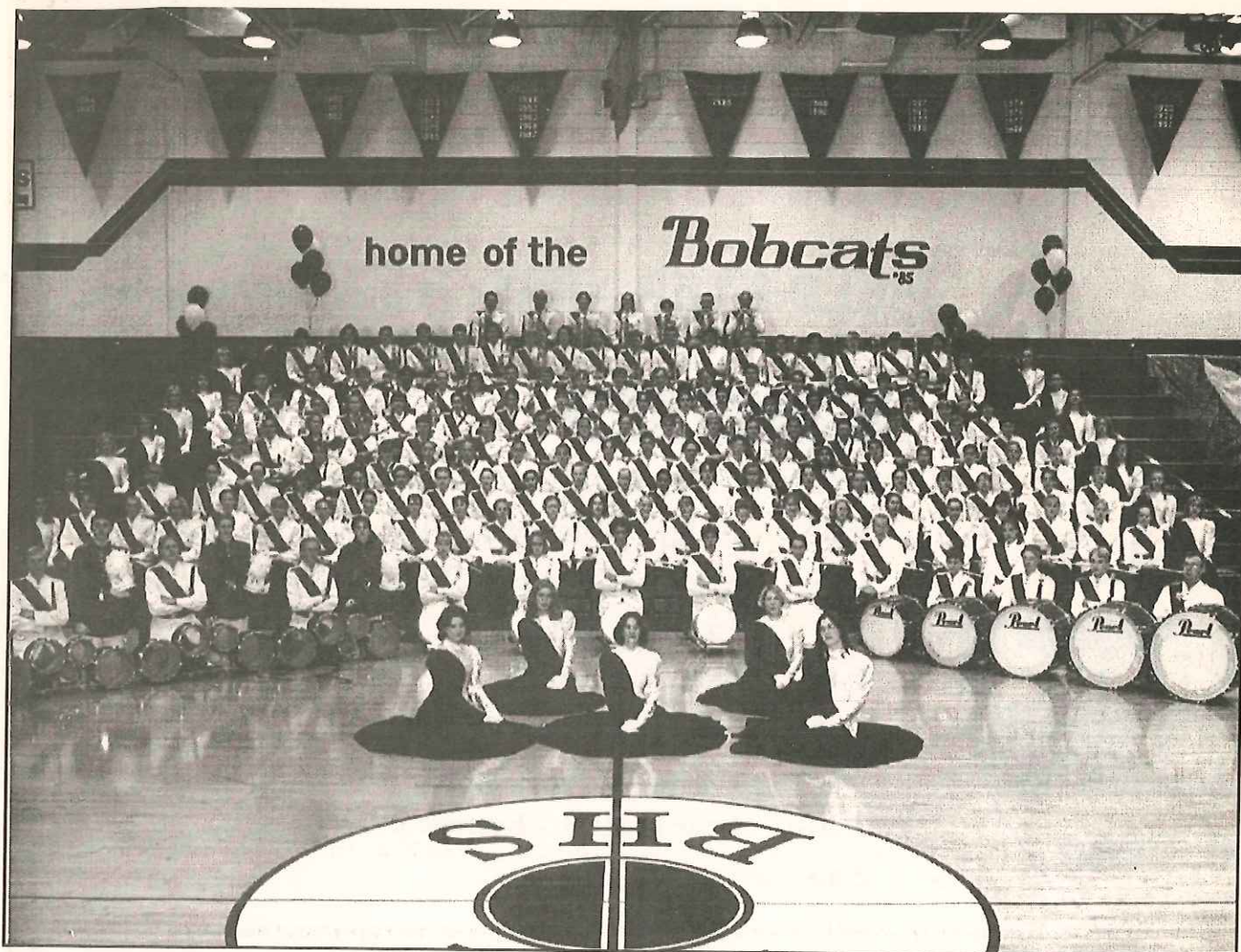
d on the field.

l parking  
available.

**Continental Western Group**  
**Tri-State Region**

ndwind Road • PO Box 500 • Luverne, Minnesota 56156-0500 • 800-533-0303





## Brookings High School Marching Band

Brookings High School Marching Band will make its perennial appearance at the Tri-State Band Festival. The band is directed by Lance Burnett. Darci Nelson, Richard Townes and Stephanie Meyer are the drum majors. School enrollment is 940 students.

*Buffalo Ridge*

INSURANCE



Marilyn Bloemendaal  
CPCU



Cory  
Bloemendaal



Pam  
Haakenson

808 S. Kniss  
Luverne, MN  
507-283-2381

Auto • Home  
Business  
Life • Health  
Investment  
Farm • Crop

**We hope you enjoy the  
50th Annual Tri-State Band Festival!**

**Welcome to Luverne's  
50th Tri-State Band Festival**

**Cellular 2000®**

**MIDWEST  
WIRELESS**

Authorized Agent

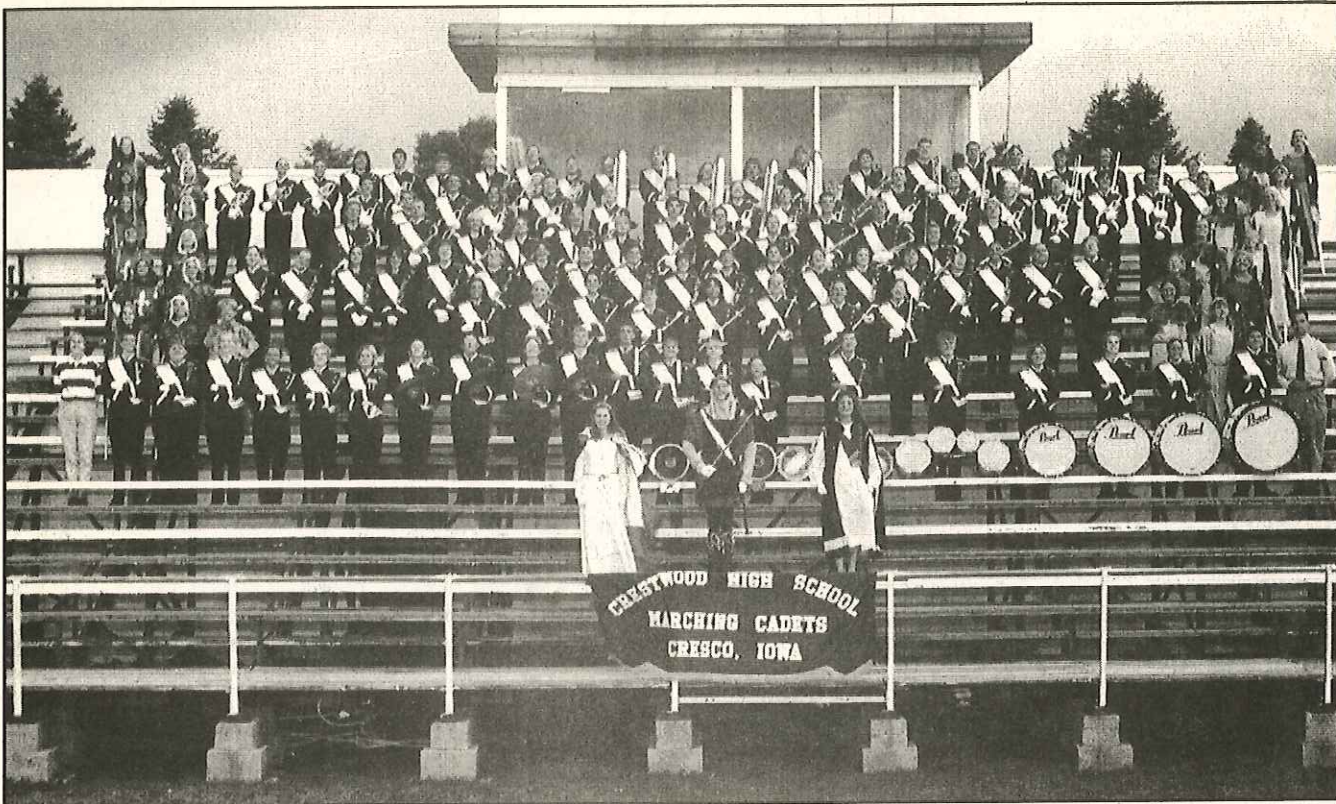


CLEARLYDIGITAL™

**Sudenga Communications**

504 E. Lincoln • Luverne, MN • 507-283-0066





## Cresco, IA

Crestwood High School has made several appearances at the Tri-State Band Festival. The band will compete in both parade and field. The band is directed by Lane M. Powell. The drum majors are Andrew Riha, Amanda Kraft and Lynette Keune. School enrollment is unofficially at 550 students.



### Luverne Eagles Club

312 West Harrison, Luverne, MN  
Phone 507-283-9661

Open 4 p.m. Weekdays & 1 p.m. on Saturdays  
Happy Hour: 5:30-6:30 p.m.

LADIES NIGHT every Wednesday night  
MEN'S NIGHT every Thursday night

The Eagles Club is available for any non-profit organization to use. Call the Club Manager at 283-9661 if you're interested in booking the Eagles Club for wedding receptions, class reunions, parties, etc.

*Welcome to Luverne's*

*50th Tri-State Band Festival!*

### The Estenson Co.

123 West Main, Luverne, Minnesota  
Phone: 507-283-2386

- Insurance • Accounting
- Income Tax Service



### **CITGO** *Food Shop*

818 North Kniss, Luverne, MN  
Phone 507-283-8733



Open 7 days a week 5 a.m. to 11 p.m.

GAS • POP • BEER • CANDY • CHIPS • PIZZA • CIGARETTES  
SUBS • COFFEE • DONUTS • ICE • DAILY PAPERS  
GREYHOUND BUS STOP • POWERBALL  
24 HOUR GAS PUMP SERVICE WITH CREDIT CARD







### Garretson, S.D.

Garretson High School will make its first appearance at the Tri-State Band Festival this year. The band will participate in parade competition only. The director is Andrea Harstad. Drum majors are Laura Irvine, Candace Stoterau and Leslie Lowe. School enrollment is 148 students.

**Custom  
Floor Covering  
Sales & Installation  
JERRY HOFF  
Floor Covering**

311 West Dodge • Luverne, MN 56156  
Phone 507-283-4543



**We believe in you.™**  
Member FDIC. And the community.

303 East Main Street  
Luverne, MN 56156  
(507) 283-4463

luverne@ffmbank.com

107 East Main Street  
Pipestone, MN 56164  
(507) 825-3301

**Good Luck To All  
Band Festival Participants!**

**Keith's Grocery & Bake Shoppe**

219 Maine Ave., Adrian, MN

507-483-2959

Hours: Mon.-Sat. 8 a.m. to 9 p.m.; Sun. 8 a.m. to 2 p.m.

**SOUTHWEST CRISIS CENTER**



107 South McKenzie • Luverne, MN

507-263-9317

*Providing advocacy service  
to victims of domestic and  
sexual abuse.*

**24 Hour Crisis Line**

**1-800-376-4311**





## George, IA

The George-Little Rock Community School Marching Band is directed by Brian LeMaster. It has competed approximately 30 years in the Festival. The band will appear in parade only. Drum majors are Becky Harms and Amanda Venenga. School enrollment is 126 students.

## Fall for Hallmark



Boyd's  
Collectibles



- ✓ Harry Potter
- ✓ Harmony Kingdom
- ✓ Snowbabies
- ✓ Beanie Babies
- ✓ Snowbuddies
- ✓ and lots more!

## Laudon's Gifts & Collectibles

121 E. Main • Luverne, MN • 507-283-2137

## Edward Jones

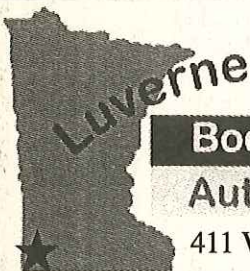
### Earl Hanson

Investment Representative

101 East Main  
P.O. Box 626  
Luverne, MN 56156  
Bus. 507-283-4469 Fax 888-823-9798  
800-243-4469



Serving Individual Investors Since 1871



## Body Shop Auto Glass

411 W. Gabrielson Road, Suite 2  
Luverne, MN 56156

Phone: 507-283-8711 Fax: 507-283-8711  
E-Mail: lbs@rconnect.com



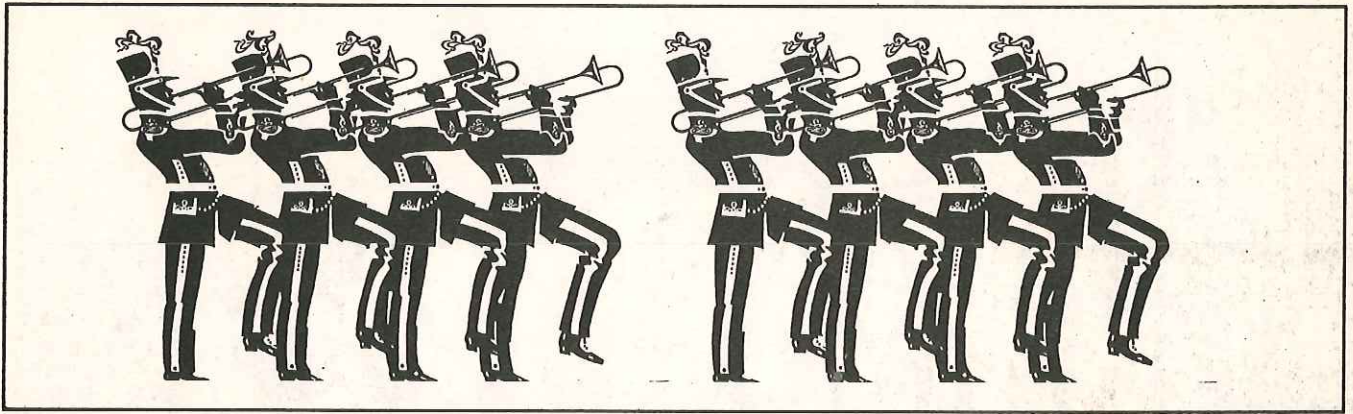
The State-of-the-Art  
Video Store  
206 W. Main, Luverne  
507-283-2737

**\$1.00**

**off** purchase of a  
movie or game  
or movie rental

Limit 1 coupon per household. Good Sept. 28-Oct. 5, 2000.





## Worthington, MN

The Worthington High School Band is directed by Craig Brenden. Drum majors are Alicia Christenson and Travis Greeley. The band has appeared at the Tri-State Band Festival for 36 years. It will participate in parade only. School enrollment is 750 students.



**New**  
30,000 sq. ft.  
Store!

**1 Block South of Main Street**  
205 East Warren • 283-4408



**Breakfast Buffet**

**7 - 11 a.m. on Sat.**  
waffles, egg bake, sausage,  
hashbrowns, muffins,  
fruit, roll, & more!

**Coffee & Roll - all day**

only **50¢**





**Relax in NEW large, sit-down deli!**



**Sandwich & Potato Salad**

only **\$1.99**

**Lots of Hot & Cold Deli Selections**  
Chicken Dinners • Ice Cream Novelties  
Pop & Juice • Fresh Fruit • Much More!



**BEST Choice for Cable TV and  
LOWEST Basic Cable Rate in Luverne!**

\*\*\*\*\* **CHANNEL LINE-UP** \*\*\*\*\*

2 KTCA-MN Public	3 KELO - CBS
4 KTIV - NBC	5 KDLT - NBC
6 KTTW - FOX	7 TBS
8 WCCO - CBS	9 KCAU - ABC
10 KMSP - UPN	11 Public Access
12 KSFY - ABC	13 KUSD -SD Public
14 A&E	15 Cinemax (P)
16 The Movie Chan. (P)	18 WGN
19 USA Network	20 KSMN - MN Public
21 HBO Plus (P)	22 HBO (P)
23 Fox Family Channel	24 ESPN
25 Animal Planet	26 CNN
27 KSTP - ABC	28 Discovery Channel
29 MSC	30 TNT
31 Nickelodeon	32 Lifetime
33 Headline News	34 TNN
35 TV Land	36 TCM
37 Weather Channel	38 History Channel
39 Learning Channel	40 ESPN 2
41 KSCB Christian	42 Fox News Channel
43 C-SPAN	44 WB
45 C-SPAN 2	46 CMT
47 VH-1	48 MTV
49 AMC	50 Golf Channel
51 Sci-Fi	52 Comedy Central
53 HGTV	54 CNBC
55 Disney	56 Cartoon Central
57 Trinity	58 EWTN

P = Premium Channels

**24 Hour Customer Service, 7 Days a Week**

**507-283-9578**

**924 5th Avenue • Worthington, MN**





### Lennox, S.D.

The Lennox High School Band will appear in both parade and field competition. It participated in the Festival from 1985 to 1995. The band is under the direction of Steve Olson. Ann Hendrickson, Tracy Lonning, Diana Ringen and Alissa Shaffer are drum majors. School enrollment is 492 students.

# SEARS

Appliances • Lawn & Garden **In Stock**  
Tools • Electronics

**507-283-8786**

500 East Main (East Main Street & Blue Mound Ave.)  
in Luverne, MN

HOURS: Monday - Friday 9 a.m. - 8 p.m., Saturday 9 a.m. - 6 p.m., Sunday 12 noon - 5 p.m.  
Tim & Karis Gust, owners

## The Furniture House

Dining • Bedroom • Blinds • Wallcoverings  
Mattresses • Family & Living Room

Plus a wide selection of unique decorating accessories & lamps!

**507-283-9501**

500 East Main (East Main Street & Blue Mound Ave.)  
in Luverne, MN

HOURS: Monday - Friday 9 a.m. - 8 p.m., Saturday 9 a.m. - 6 p.m., Sunday 12 noon - 5 p.m.  
Tim & Karis Gust, owners

Banquet Rooms for  
Wedding Receptions • Dances • Reunions

# SHARKEE'S

SPORTS BAR & GRILL

705 South Kniss, Luverne, MN 56156

**507-283-4942**

Al Hurlbut & Brian Wixon, owners

*Welcome to the 2000  
Tri-State Band Festival*  
**QUALITY USED CARS**

# CONNELL

CAR CARE

509 East Main Luverne, Minnesota

**Phone 507-283-2341**

After Hours: Dave Connell 507-283-8690,  
Terry Connell 507-283-8848 or John Sudenga 507-283-4359

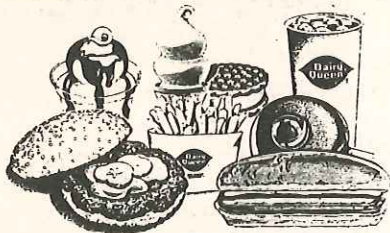




## Sioux Falls, S.D.

The Lincoln High School Marching Band has appeared in the Tri-State Band Festival many times over the past 50 years. It will participate in both parade and field competition. The band is directed by Bob Carlson. Drum majors are Allison Fuerst, Lori Woltman, Matt Schmidt and Matt Leedom. The school enrollment is 1,820 students.

Welcome to Dairy Queen...  
For a cool treat or a hot meal!



**We Treat You Right®**

Dairy Queen® stores are proud sponsors of the Children's Miracle Network  
Telethon, which benefits local hospitals for children.

© AM D.Q. Corp./1993

**HOT EATS  
COOL TREATS.**



**brazier.**

Luverne, MN  
Phone 283-9082  
Open 10:30 a.m.  
to 10 p.m.  
7 days a week.

© Reg. U.S. Pat. Off., AM D.Q. Corp.

*Where fine craftsmen  
produce work with pride!*

## Country Cupboards

2 miles south of Luverne, MN on Highway 75

**507-283-8176**

# MANITOU CARPETS

113 West Main, Luverne, MN 56156 • 507-283-9206

*Welcomes Tri-State Musicians!!*

**Carpet • Vinyl • Tile • Laminates**





## Slayton, MN

The Murray County Central High School Band will appear in parade competition only. It has participated in the festival since the '70s. The band is under the direction of Donna Larson. Amy Christiansen, Ashlee Lolkus, Cody Gerber and Kim Spartz are drum majors. School enrollment is 300 students.

## Enjoy The Band Festival!



**TACO JOHN'S**  
A WHOLE LOT OF MEXICAN.

More Than You Imagined™  
South Hwy. 75, Luverne, MN  
Phone 283-4562

Sunday - Saturday 11 a.m. to 10 p.m.  
Drive Thru Extended Hours - Friday &  
Saturday 11 a.m. to 11 p.m.

## Welcome to the Tri-State Band Festival

For all your insurance needs see  
Stacie Remme & Carrie Tunnissen

**MINNWEST  
INSURANCE CENTER**

located in the Minnwest Bank Building  
**507-283-9586**



Roger Achterhof



Paul Alink

**FGL Commodity Services**

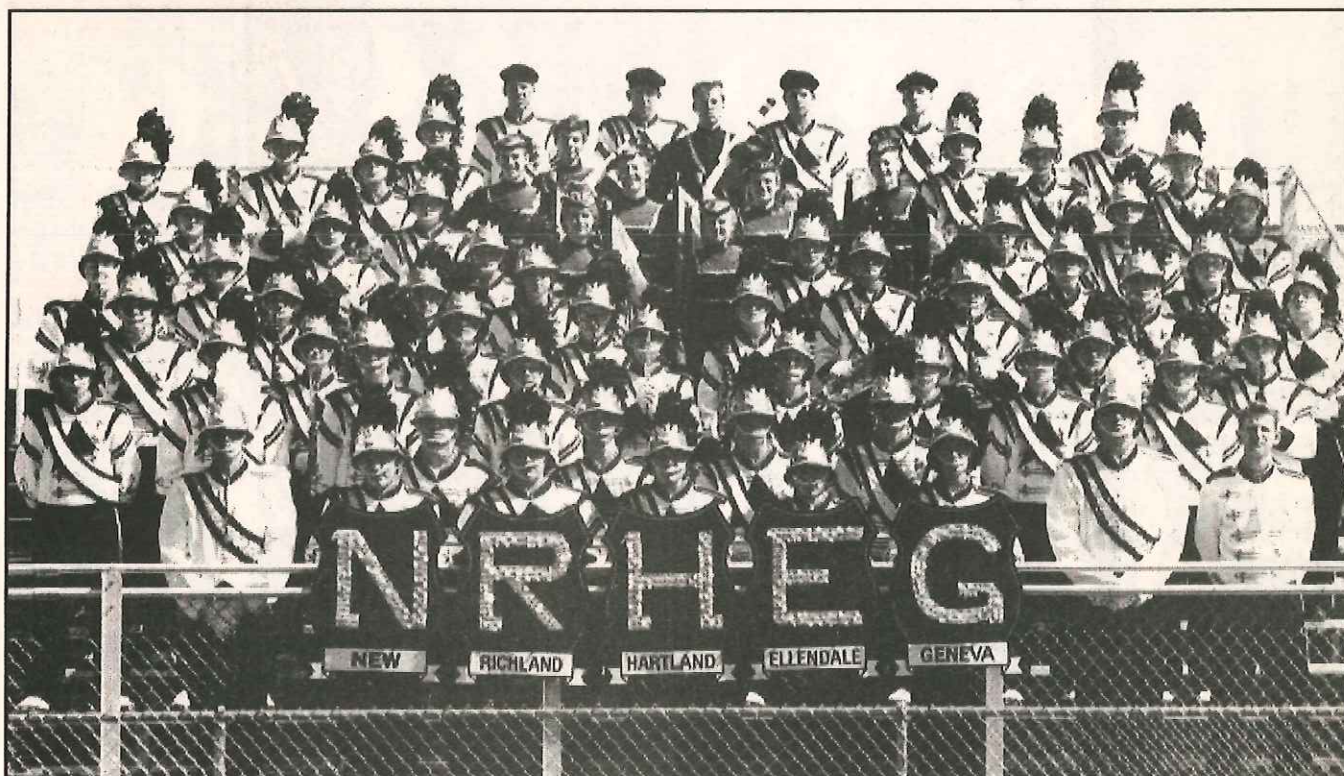
106 East Main, Luverne, Minnesota 56156  
Phone 507-283-9101



**MANUFACTURING, INC.**  
LUVERNE, MN

**1-800-649-2252**





### **New Richland, MN**

The New Richland-Hartland-Ellendale-Geneva Marching Band is under the directorship of David Haugh. This will be the band's third appearance in the Festival. It will participate in parade competition only. Drum majors are Joel Eastvold and Gavin Berg. School enrollment is 348 students.

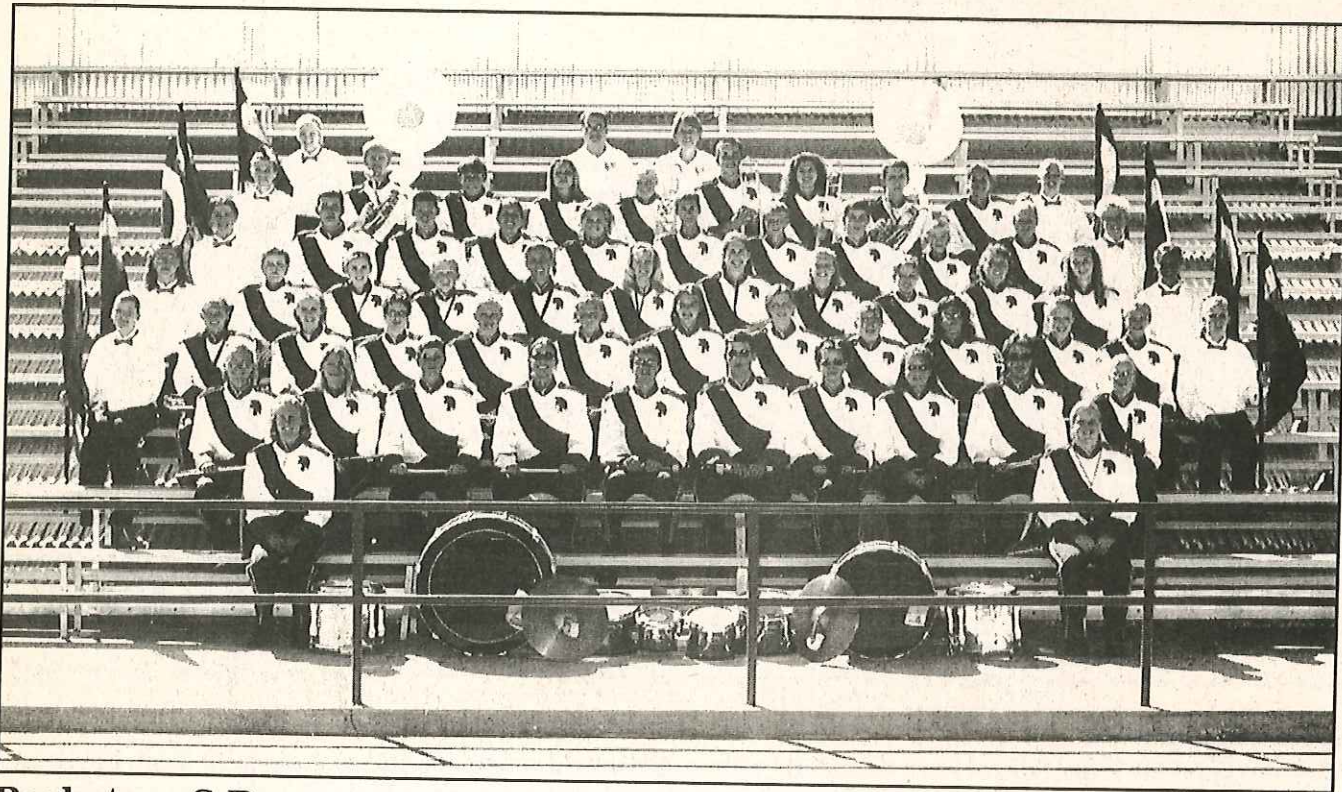
## **March To A New Tune**

Choose McLeod USA for your telecommunications services:

- ♪ Local & Long Distance Phone Service
- ♪ Cable TV
- ♪ Internet
- ♪ Distance Learning
- ♪ Computer Networking







## Parkston, S.D.

Parkston High School Marching Band will appear in the Festival for the third time. It will participate in field competition only. The band is directed by Jon Mattheis. Drum majors are Amber Sperlich and Andrea Marquardt. Enrollment is 224 students.

Save \$\$\$ on top-quality  
**"OVER-STOCK MERCHANDISE"**

- Cleaning Supplies
- Personal Care
- Small Appliances
- Toys, Books, Games
- Bedding • Tools
- Home Dec Items
- Kitchen Ware
- Curios & Bookcases
- Upholstered Furniture
- Glide Rockers

**Framed Art**  
Wildlife • Nostalgic • Floral  
Tractor & Farm

**Bargain Center**  
118 S. McKenzie, Luverne  
**507-283-8013**

**PRINT EXPRESS** 207 E. Main  
Luverne, MN

**Screenprinting** 507-283-1770  
**Embroidery** or Toll Free  
**Ad Specialties** 888-283-1770

T-Shirts	Bags	Calendars	Buttons
Jackets	Towels	Keychains	Can Coolers
Caps	Denim Shirts	Mugs	Magnets
Sweatshirts	Shorts	Pens	Squeeze Bottles
Uniforms	Golf Shirts	Pencils	Etc.
	and MORE!		

Fast, Friendly Service

Enjoy the 50th Annual  
**Tri-State Band Festival!**



**Berkley**  
Information Services

10 Roundwind Road, Luverne, MN  
Phone 507-283-9195 • FAX 283-2627

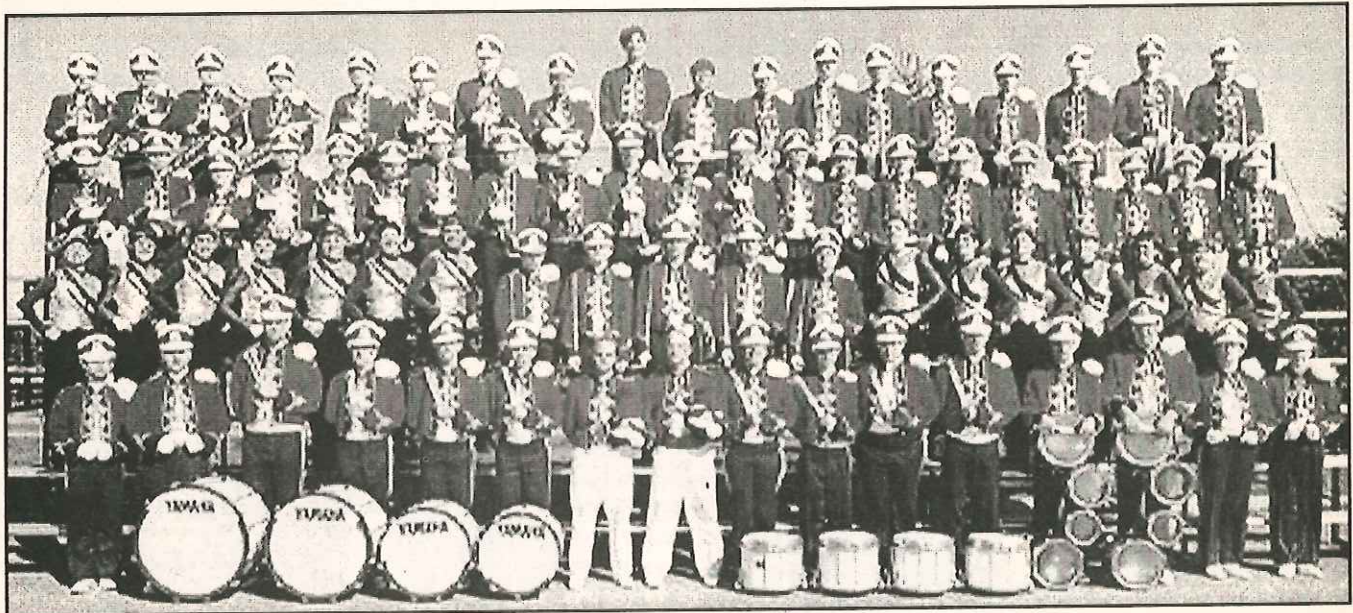
**Welcome to Luverne**

from the office of

**Skewes, Klosterbuer  
& Vajgrt, LLP**

120 N. McKenzie, Luverne, MN  
**507-283-9111**





## Inwood, Iowa

West Lyon Community School High School Band is under the direction of Lynette Wedeking. Leah Karli and Brian Twedt are drum majors. They have participated in the Tri-State Band Festival for more than 30 years. The band will compete in both parade and field competition. The school has 260 students enrolled.



**IMAGE WEAR INC.**

220 E. Main      Luverne, MN      507-283-8605

**Scott VandeWeerd**

**Imprinted & Embroidered Sportswear**

**Promotional Products**



**Kozlowski**  
**INSURANCE AGENCY**

•PFL Long-Term Care	•Auto	•Commercial	•Home
•Recreational Vehicles	•Hail	•BlueCross BlueShield	•Farm
•Disability	•Boat	•Motorcycle	•Life

**Located in the First National Bank Building**  
Hatting Street & South Hwy. 75, Luverne

**507-283-3704 or Toll Free 1-877-631-3704**  
**fax 507-283-3733**

Main office located in Pipestone, MN Toll Free 1-888-825-3366

**Welcome to the**  
**2000 Tri-State Band Festival!**

**Since 1948**  
**LUVERNE FARM STORE**

**Quality & Service**

**Gary Golla**

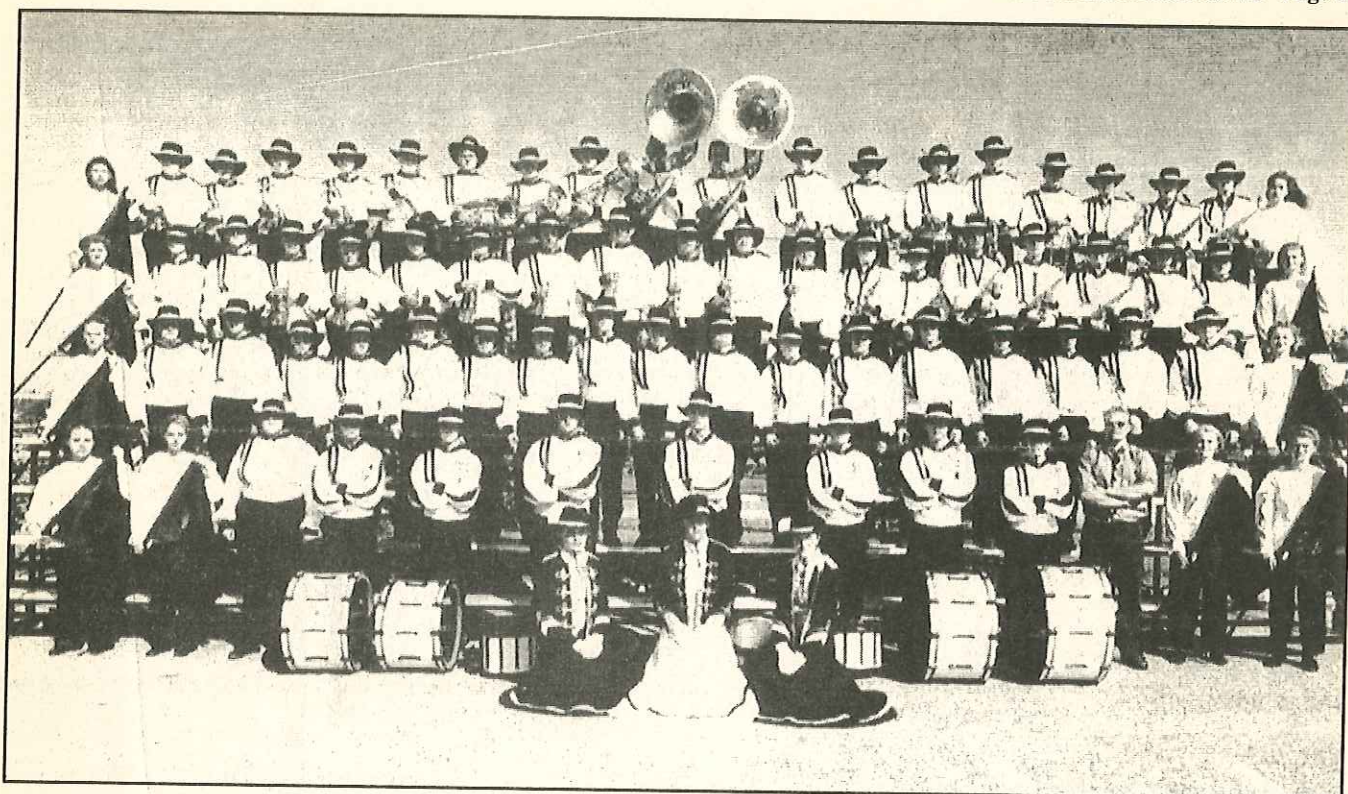
**S. Highway 75 • Luverne, MN • 507-283-9555**

**Dr. Paul Henriksen**  
**Optometrist**

212 West Main St.  
Pipestone, MN 56164

**Phone 507-825-5444**  
**Toll free 1-800-750-5448**





## Paullina, IA

South O'Brien High School Marching Band is participating in the Festival for the first time this year. It will appear in both field and parade competition. The band is under the directorship of Neil Peterson. Drum major is Leah Lundquist. Enrollment is 277 students.

## Welcome to Luverne! "We Service What We Sell"

- Muzzle Loading • Guns & Accessories • Licenses
- Fishing Supplies • Scopes & Binoculars
- Loading Supplies • Archery Supplies

**Full Service Licensed Gunsmith**

# HARVEY'S

Trading Post, Inc.

Hwy. 75 & Main • Luverne, MN

507-283-8158

## ServiceMASTER

*the  
cleaning people  
who care®*

Serving all of Rock & Pipestone Counties

- Water and Fire Restoration
- Commercial Cleaning or Residential Cleaning

**Deb or Gene Aanenson**

404 W. Main, Luverne, MN

**507-283-9473 or 507-283-9393**

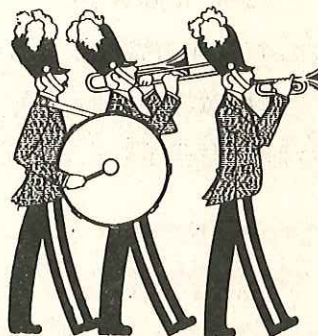
Satisfaction Guaranteed - Free Estimates

*We serve because we care.*

We urge everyone to take the day off & attend the

# TRI-STATE BAND FESTIVAL

Good luck to all bands in the competition!!



**FARMUTUAL**  
A POLICY OF WORKING TOGETHER

Confident in the future of Luverne & the surrounding areas.

## Latham Agency, Inc.

Insurance

126 E. Main • Luverne, MN

507-283-9181





## Sibley, IA

Sibley-Ocheyedan High School is competing in the Tri-State Festival for its 26<sup>th</sup> time this year. The Marching Generals are under the direction of Peter Carlson. Drum majors are Courtney Kemp, Abbie Hansen and Meghan Ostermann. Enrollment is 327 students.

### Need a Quick Lunch Today?

**Glen's Food Center is Grilling!**

(serving from 10 a.m. to 1 p.m.)

Saturday, Sept. 30th only

**Hamburger, Rib Tickler,  
Bratwurst or Hot Dog  
served with Chips & Pop**

**\$1.50**  
for only

**Glen's  
Food Center**

210 East Lincoln  
Luverne, MN  
507-238-4429 or  
507-283-2445

## MainStreet financial services

"Your Road To Financial Independence"

212 E. Main St. • P.O. Box 716  
Luverne, MN • 507-283-9590 or 800-260-1014



**Mike Cox**  
Registered Representative  
FSC Securities Corporation



**Nancy Van De Berg**  
Insurance Agent  
MN 2006 2720

**Good Luck to all the bands at  
the Tri-State Band Festival!**

## HAIR Ltd.

101 S. McKenzie • Luverne, MN • 507-283-9519

Open Monday & Friday 9 a.m. - 5 p.m.

Tuesday 9 a.m. - 7 p.m. (Kid's day - \$6 haircuts 12 & under)

Wednesday & Thursday 9 a.m. - 8 p.m.

Saturday 8 a.m. to 3 p.m.





## Sioux Center, IA

The Sioux Center Community High School has appeared in the Tri-State Band Festival for 44 years. The band is directed by Julie Hulstein. Drum majors are Jana Bahrke, Stacy Brenneman, Kate Daniel and "Mickey Mouse." The school's enrollment is 290 students.



Enjoy a round of golf at the

# LUVERNE



# COUNTRY CLUB

Located east of Luverne. Take Hwy. 16 east to Cty. Rd. 9 south, turn on first left. Clubhouse is located on right side.

Golf Carts & Driving Range Available

**CALL 507-283-4383**

for tee times

Welcome to the

## 50th Annual Tri-State Band Festival!

Hills-Beaver Creek  
Hills, MN  
962-3221

Beaver Creek, MN  
673-2388

# COOP FARM SERVICE



CENEX  
LAND O LAKES



# Fred's Body Shop

Now available,  
collision repair on the

## CHIEF E-Z-LINER

For untized body damage, we use the Chief EZ Liner II to accurately and quickly repair your car to manufacturer's specifications.

303 W. Edgehill

Luverne, MN

**PHONE 507-283-2728**



# Good Luck

## Adrian Dragons Marching Band

in Tri-State Band Festival Competition!

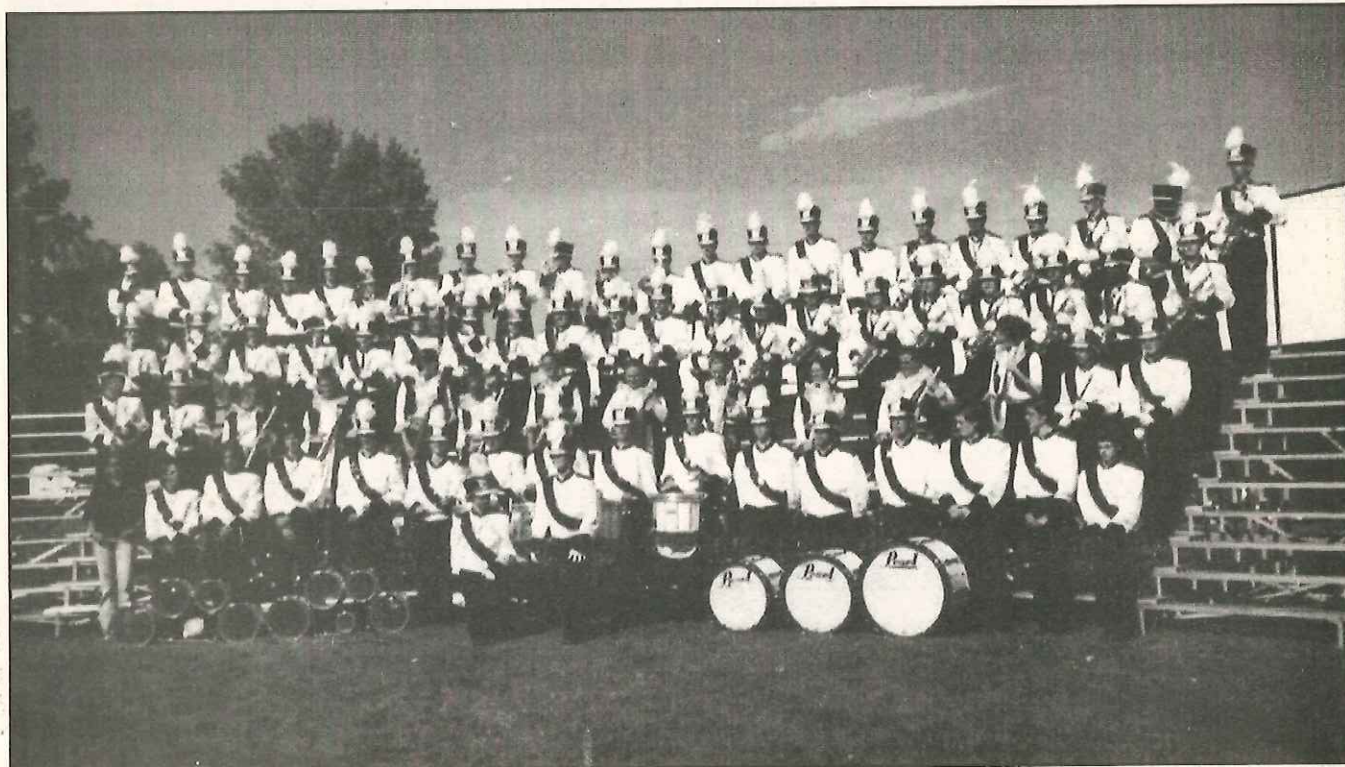


### Adrian State Bank

P.O. BOX 129 322 MAINE AVENUE  
ADRIAN, MINNESOTA 56110  
PHONE: 507-483-2447

Member F.D.I.C.





### Rochester, MN

Lourdes High School Marching Band will appear in field competition only. This will be the band's second appearance in the Festival. The band is under the direction of Bonnie Poterucha. Drum majors are Stephanie Scheitel and Jennifer Martinson. School enrollment is 549 students.

### *Luverne Flowers and Greenhouses*

811 West Warren  
Luverne, Minnesota 56156

**507-283-4451**

Full service floral and  
landscaping!

***Plant Now For Spring!***



### **WALL STREET MOTOR** *Company*

**Quality Used Cars & Trucks**

P.O. Box 248, Jasper, MN

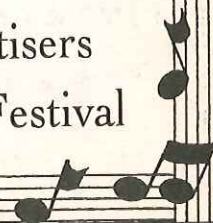
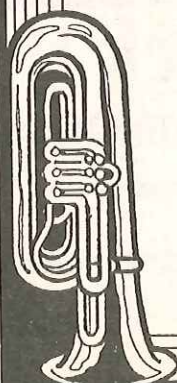
**507-348-8612 or Toll Free 1-800-381-8353**

Hours: Tues. - Thurs. 9:00 a.m. - 5:00 p.m.; Saturday 9:00 a.m. - 2:00 p.m.

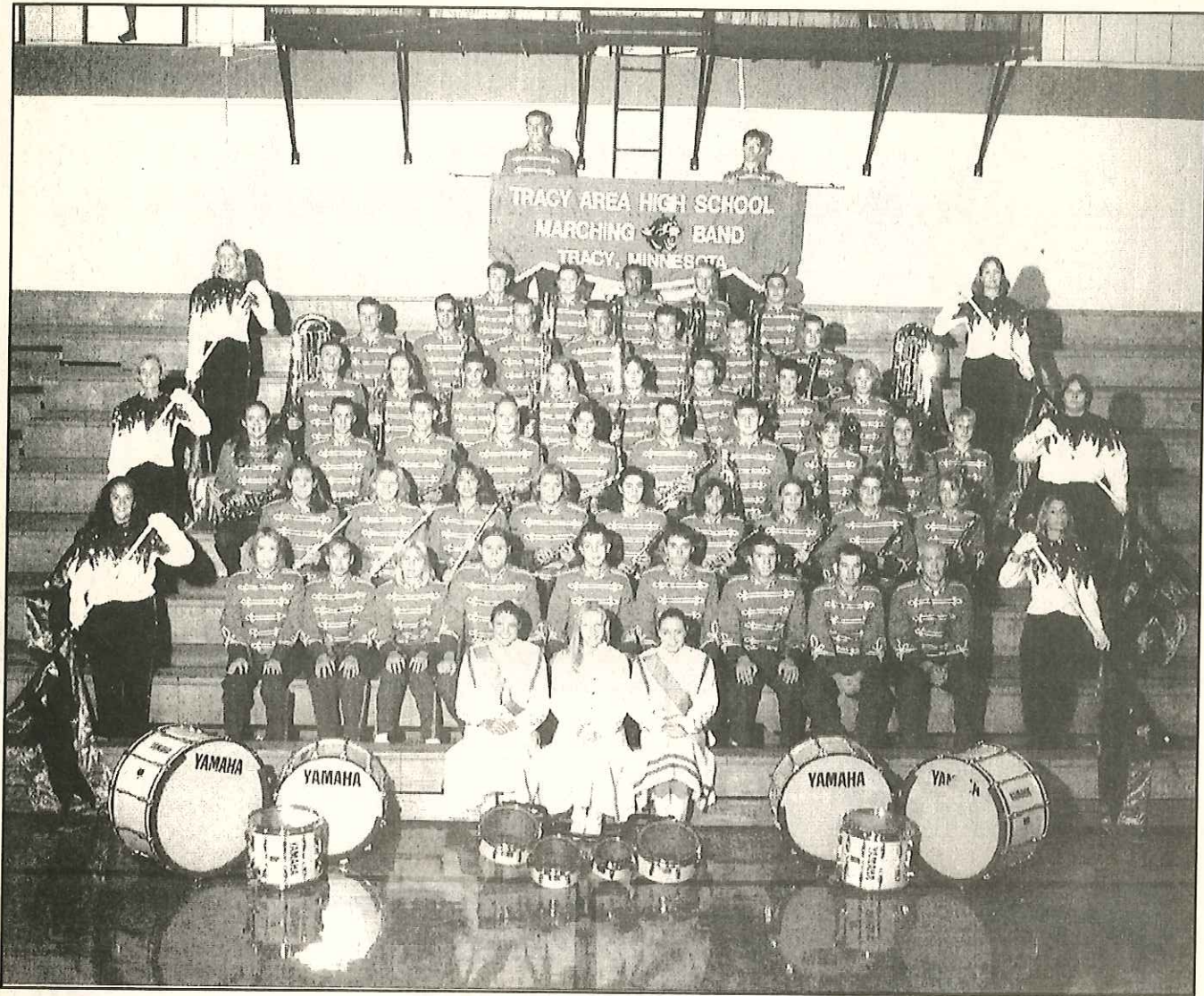
Open Monday 'til 7:00 p.m.

## ***THANKS EVERYONE!***

...the bands for participating,  
the spectators for coming to watch & the advertisers  
for supporting the 50th Annual Tri-State Band Festival







## Tracy, MN

Tracy Area High School will appear in Class A parade competition under the direction of Chris Miller. Kelly Warner, Carin Gervais and Elizabeth Malmberg are the drum majors. Senior High enrollment is 347. The band has attended the Festival for 13 years.

## PORTTRAITS

*en Nichele, Inc.*

117 MAINE AVE., ADRIAN, MN  
507-483-2929

*"Helping You  
Make Memories!"*

Why buy new when used will do?

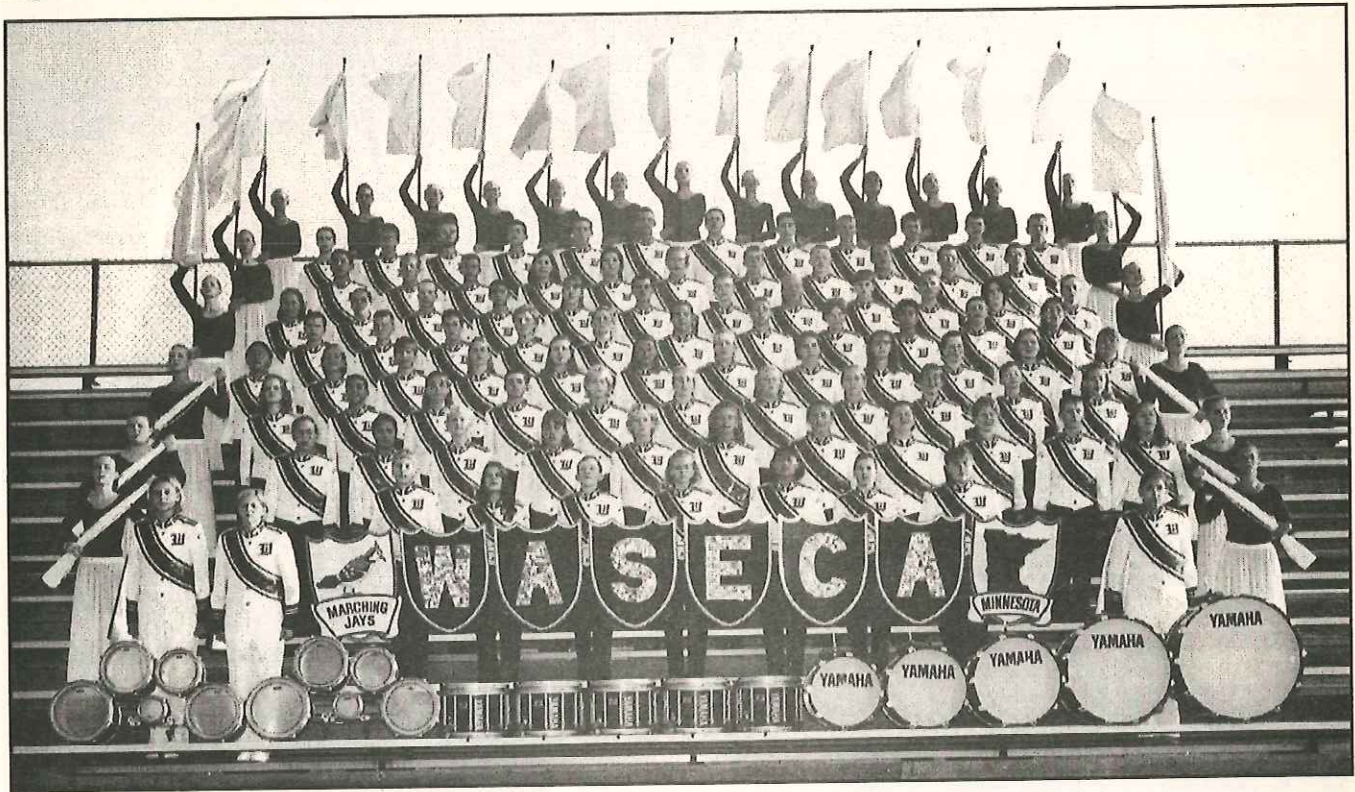
**Jim's A**uto Sales  
of Luverne, MN

203 South Kniss (Highway 75), Luverne, MN  
507-283-2656 or 507-283-4276 (home)

1993 & newer models include 3,000 mile or 3 month drive train warranty.

• • We Rent Cars & Vans • •





## Waseca, MN

The Waseca Marching Jays band has made many appearances at the Festival over the last 50 years. It will appear in both parade and field competition. The band is under the directorship of Kim Cosens. Drum majors are Lindsay Dodd, Karen Prechel and Kelly Wilder. School enrollment is 750 students.



# Welcome Area Bands



## 2 Extra Value Meals

Starting at

# \$2.99



"We love to see you smile"

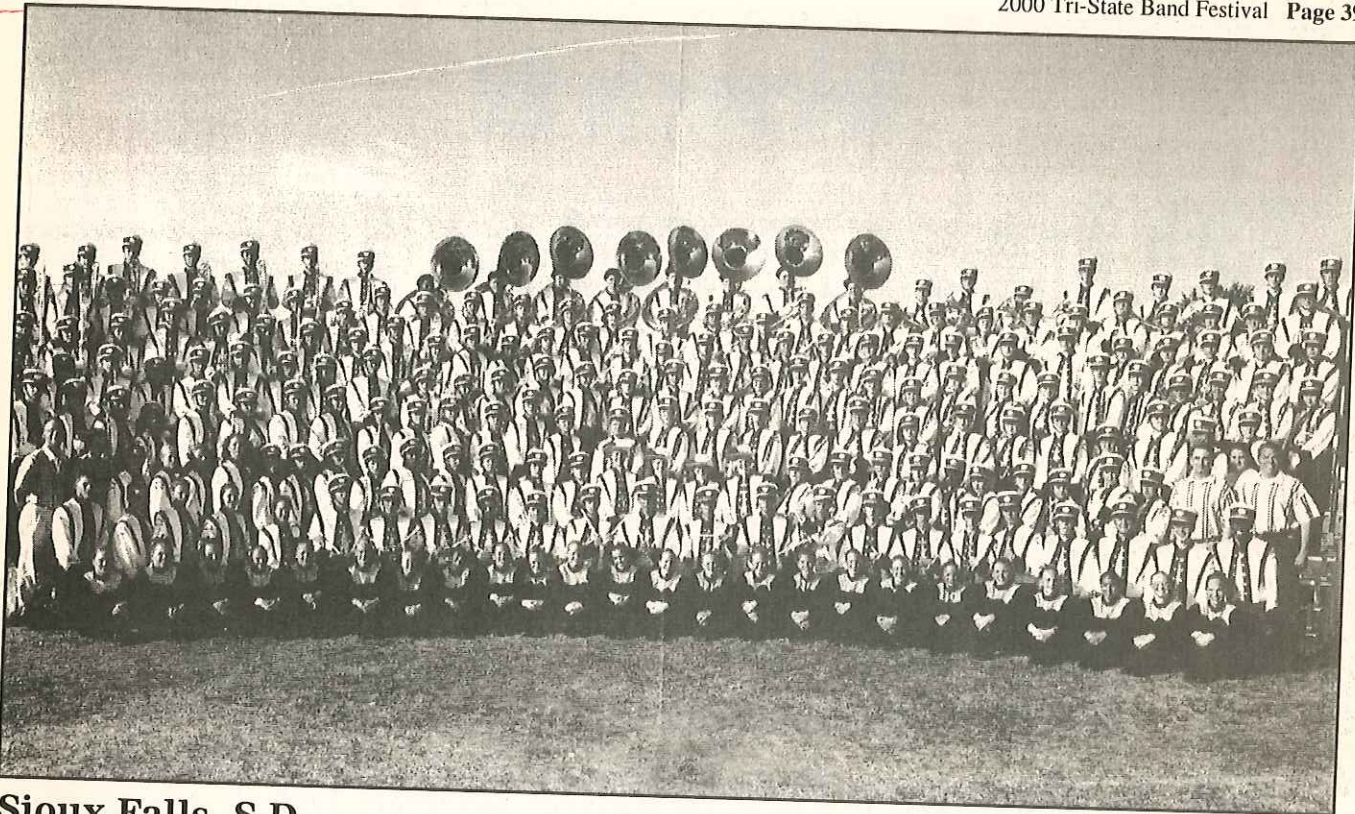
Hwy. 75 & I-90 • Luverne, Minnesota



PLUS TAX. PRICES MAY VARY BASED ON INDEPENDENT OPERATOR PARTICIPATION.







## Sioux Falls, S.D.

Washington High School Marching Band will make its 12<sup>th</sup> appearance at the Tri-State Band Festival. The band is under the direction of Gary Pederson and assistant director Rick Jensen. Drum majors are Kayla Bickett, Katrina Connary, Keith McCollister and Stacey Strickler. High school enrollment is 1,900.



Mark & Annie Opitz, owners

PRINTING  
COPYING  
GRAPHIC DESIGN  
SPECIALTY PRODUCTS  
OFFICE SUPPLIES

**Good Luck  
Band Members**



116 W. Main St.  
Luverne, MN 56156

(507) 283-1716  
Fax (507) 283-1726  
1-888-933-4457



South Highway 75  
Luverne, MN  
507-283-4216  
1-800-240-4294

***Real Estate is our ONLY Business...  
And we work at it full time!***

Edwin Elbers, broker, home 283-8047  
Ray Hooegeveen, home 283-2095  
[www.siouxfallsrealestate.com](http://www.siouxfallsrealestate.com)



**Buy a  
Band  
Button!**  
**\$3<sup>00</sup>**

**Good Luck to All  
Band Festival Participants!**



405 W. Interstate Drive  
Luverne, MN  
507-283-1965



405 W. Interstate Drive  
Luverne, MN  
507-283-2156



# Welcome to the 50th Annual Tri-State Band Festival

[www.papik.com](http://www.papik.com)



## 5th Anniversary Celebration Going on Now at Papik Motors, I-90 in Luverne

### Service after the Sale

- FREE** pickup & delivery in the tri-state area
- FREE** shuttle service
- FREE** alignment check with every service visit
- FREE** loaner car
- FREE** car wash with every service visit
- FREE** coffee (Seattle's Best)

**Papik**  
MOTORS  
I-90 • LUVERNE, MN.

*Drive Satisfied.*


[www.papik.com](http://www.papik.com)

  
Genuine Chevrolet

 **PONTIAC**  
DRIVING EXCITEMENT

  
**BUICK**

  
Cadillac

 Oldsmobile

**GMC**

**507-283-9171 • 1-800-634-7701 • [www.papik.com](http://www.papik.com)**







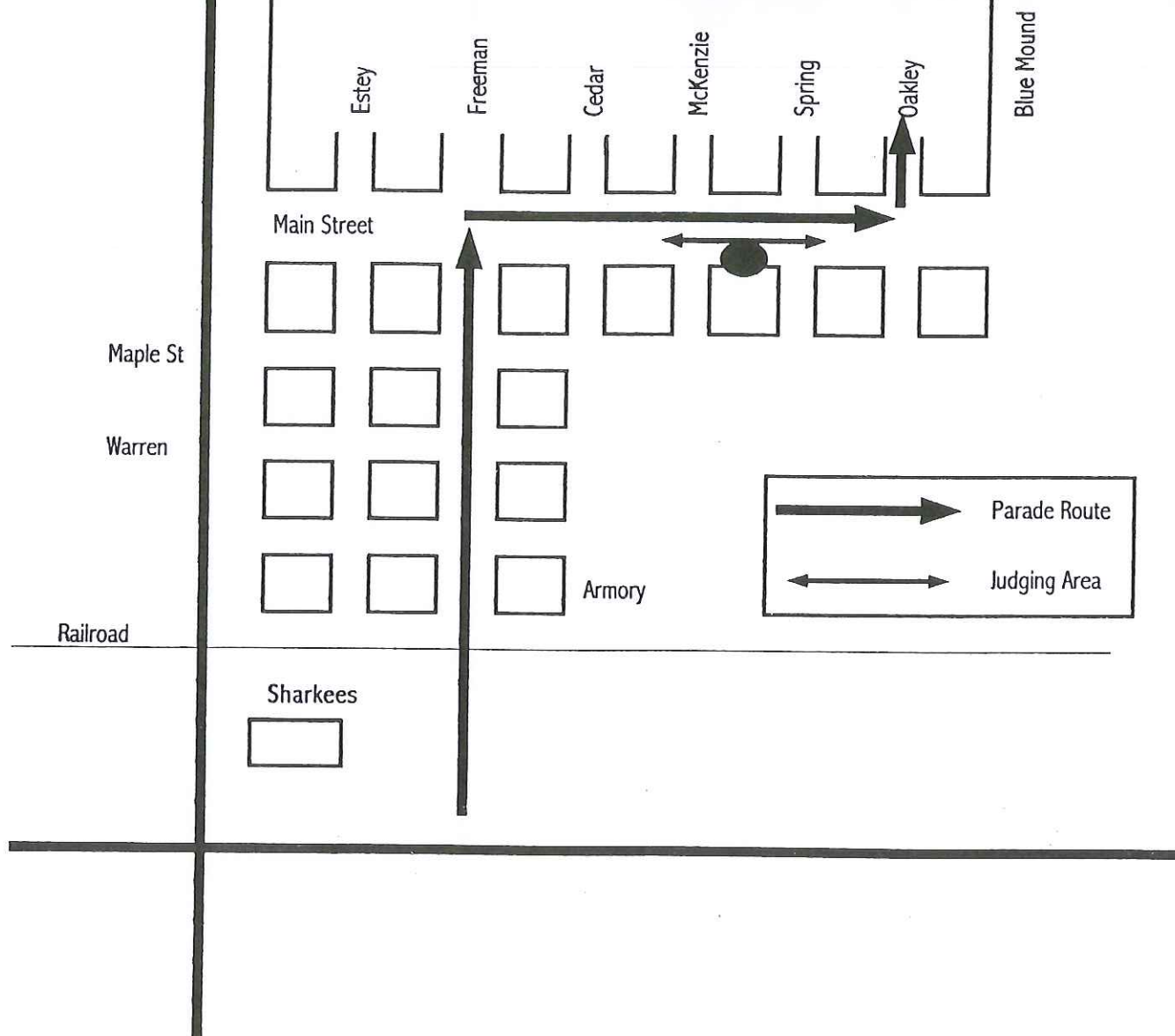
Athletic Field

High School



Bus Parking

# Tri-State Band Festival Parade Route Luverne, Minnesota









# 50 Years of Marching Band Excellence



**AREA CHAMBER OF COMMERCE  
Convention and Visitors Bureau**

102 East Main • Luverne, MN 56156-1831

Phone/Fax 507-283-4061 or 1-888-283-4061 • E-Mail: [chamber@rconnect.com](mailto:chamber@rconnect.com)