

\$2.00



PARADE

10:00 a.m. Main Street

FIELD

1:00 p.m. LHS Athletic Field



Welcome

to the

45th Annual Tri-State Band Festival

The Tri-State Band Festival is a special time for the people of Luverne. Each year we look forward to hosting the multitude of festival fans that congregate in our city.

This year, the 45th Annual Tri-State Band Festival brings together 24 high school marching bands from the far corners of Minnesota, Iowa, and South Dakota for a day of spirited competition. We are also proud to host the 2d Marine Aircraft Wing Band as our guest band.

The City of Luverne and the Band Festival Committee extend a warm welcome to all band members, band parents, and everyone who participates in and supports the Tri-State Band Festival. Enjoy the day!



2d Marine Aircraft Wing Band

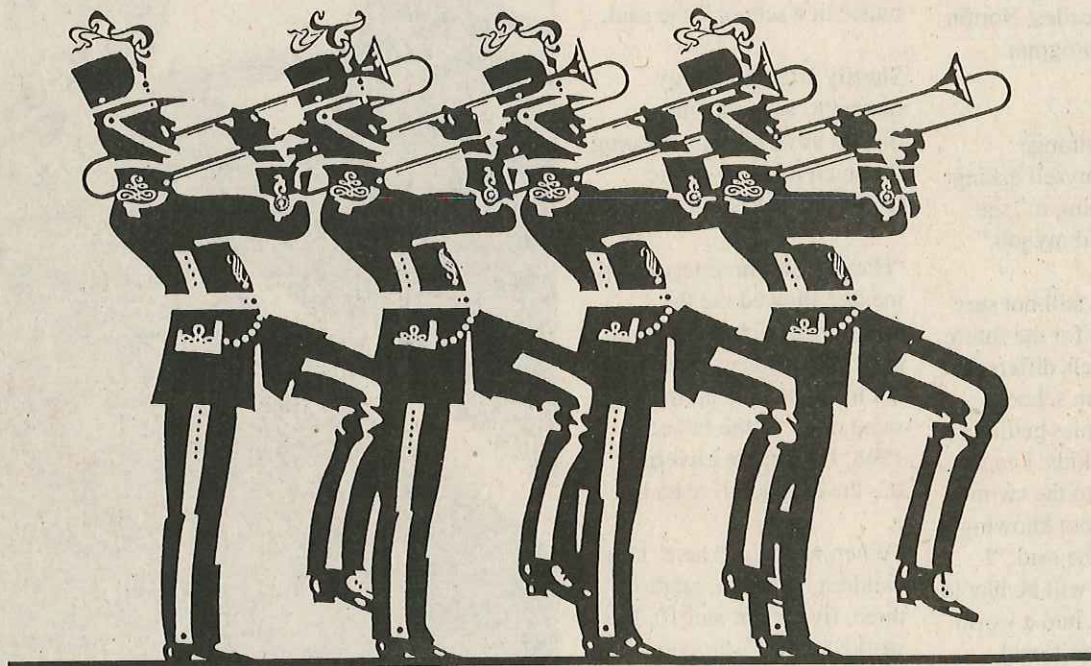
The 2d Marine Aircraft Wing Band was organized in 1943 during World War II in the Pacific Theater of Operations and is currently based at Marine Corps Air Station, Cherry Point, North Carolina. Since April of 1993, the band is under the direction of Chief Warrant Officer 3 Edward D. Harris. The Enlisted Band Leader is Master Sergeant Craig Wells, and the Drum Major is Gunnery Sergeant Lamar McGee Jr.

Comprised of approximately 50 Marine Musicians, the 2d Marine Aircraft Wing Band is a highly trained and versatile musical organization capable of performing in a multitude of settings that include its primary mission as a ceremonial unit, Concert Wind Ensemble, Big Band, Jazz Combos, Dixieland, Rock, Country, and various chamber ensembles.

The 2d Marine Aircraft Wing Band travels extensively throughout the Eastern United States and entertains millions of people in nearly 300 performances annually. Highlights from these performances include numerous performances for the Presidents of the United States, and other national events such as the Mardi Gras Parade, the Cotton Bowl, the Kentucky Derby, the Indy 500, the Pro Football Hall of Fame, the dedication of the Ted Williams Baseball Museum and most recently the Miss America Pageant Parade in Atlantic City, New Jersey.



45th Annual Tri-State Band Festival



September 30, 1995

Luverne, Minnesota

• PARADE •

Luverne
Main Street
Begins at 10:00 a.m.

• FIELD •

Luverne High School
Athletic Field
Begins at 1:00 p.m.

**Listed in Top 25 Festivals & Events
in Minnesota!**

A production of Tollefson Publishing
Luverne, MN

Myrna Norton is 1995 parade marshal

By Carole Olson

Myrna Norton is this year's Tri-State Band Festival parade marshal. Norton has recently retired from the Luverne School District after 27 years of teaching elementary music.

Now, for the first time in nearly three decades, Norton isn't planning program themes.z

"It's kind of a strange feeling. I find myself asking if I'm really doing it," she said. "I've loved my job."

Although she's still not sure about her plans for the future, she knows it feels different being away from school. "I'm going to miss getting to know so many kids. I can't imagine going to the swimming pool and not knowing the children," she said. "I wonder what it will be like to be thrown back into a world of adults. I haven't paid much attention to them."

Norton grew up in the East Chain and Fairmont area. Her parents, who were both musical, shared their gifts with her. She said her dad could play just about any musical instrument, and her mother plays the piano.

"For awhile my dad had a little orchestra on the side. He always said the orchestra paid the grocery bills during the Depression," Norton said. She started taking piano lessons when she was 4 years old.

Norton continued to develop and use her talents. She taught piano lessons while

she was still in high school and while her four children were small.

When her three boys and one girl were older and starting school, the family moved to Madison, S.D., where Norton pursued a college degree and teaching certificate. "I went to school when I was 30. I'd always had a yen to teach music in a school," she said.

Shortly after the family moved to Luverne, the district advertised an opening for an elementary music teacher and she applied.

"Harvey Eitreim interviewed me and showed me the school. I thought I'd have to go home and hear from him, but he signed me up that same day. "In the fall of 1968, I started in Luverne. It's the only job I've had.

"When we moved here, I had children in school, grades three, five, eight and 10. It worked great," she said.

At first she taught music in grades three through six. The class sections often numbered 30. From tonettes to recorders, phonograph records to compact disks, she saw many changes over the years.

Always the programs

But one thing was constant. Every year she coordinated at least two music programs. The community learned to anticipate the shows with pleasure. Some parents shed tears when their last child graduated from elementary school. Their tears combined nostalgia for their child's passing youth and for their last program with Mrs.

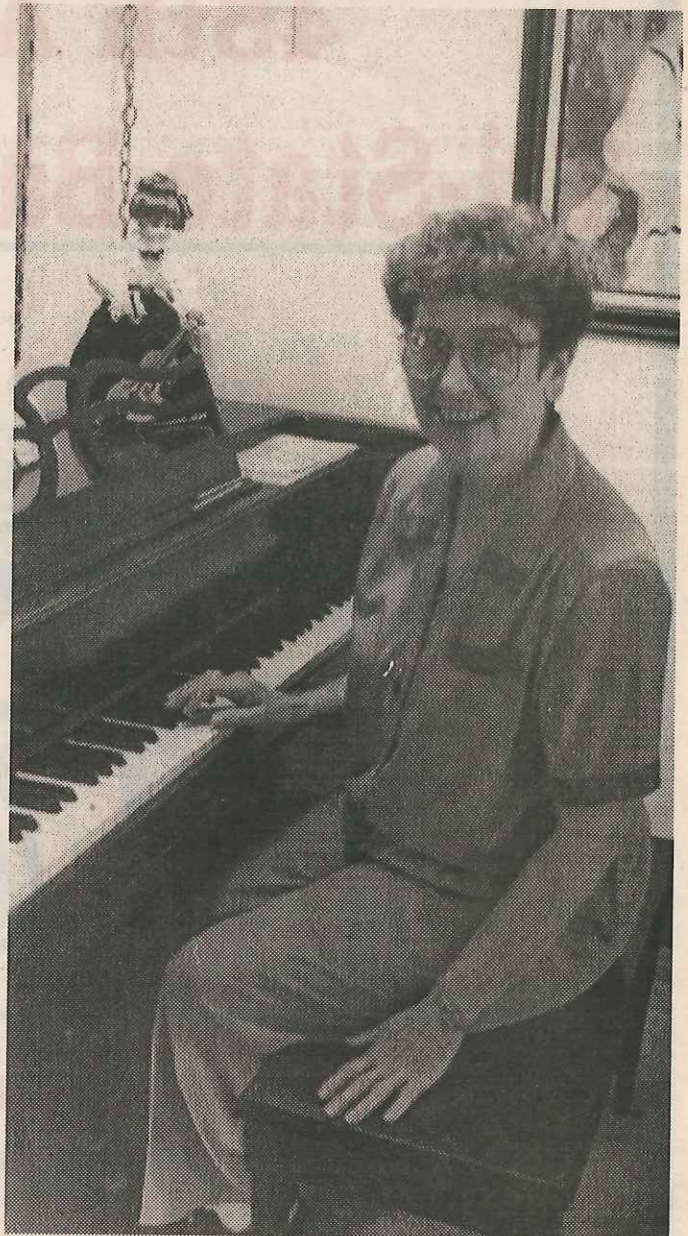


Photo by Carole Olson

Myrna Norton, long-time elementary music teacher in the Luverne School District, is this year's parade marshal.

Norton.

Each year the children energetically showed off their talents under her leadership. Each year she stood at the piano to accompany and direct the programs. Each year, the themes reflected the interests of children and used a variety of songs. Sometimes the words to familiar tunes were

changed, and sometimes whole songs were created to fit with the demands of a program theme. From the silly to the sublime, Norton was the head architect of it all.

"There are so many materials (now) compared to 27 years ago. We were very limited.

Norton/See page 4

Finals Score Sheet

PARADE WINNERS

CLASS A

1st Place _____

2nd Place _____

3rd Place _____

CLASS AA

1st Place _____

2nd Place _____

3rd Place _____

CLASS AAA

1st Place _____

2nd Place _____

3rd Place _____

CLASS AAAA

1st Place _____

2nd Place _____

3rd Place _____

Tri-State Band Festival

Traveling Sweepstakes Trophy _____

FIELD WINNERS

CLASS A

1st Place _____

2nd Place _____

3rd Place _____

CLASS AA

1st Place _____

2nd Place _____

3rd Place _____

CLASS AAA

1st Place _____

2nd Place _____

3rd Place _____

CLASS AAAA

1st Place _____

2nd Place _____

3rd Place _____

K.M. GETMAN Award _____

AUXILIARY AWARDS:

Outstanding Drum Major _____

Outstanding Drum Line _____

Outstanding Flag Corps _____

Outstanding Horn Line _____

Judging and Scoring

TRI-STATE BAND FESTIVAL TRAVELING SWEEPSTAKES TROPHY

This trophy is awarded for the band with top points over all. The winning band also receives a plaque. A band must win this trophy 3 consecutive years to retain it permanently. All winners will retain the plaque.

K.M. GETMAN ORIGINATORS AWARD

This award will be a special award made to the band which, throughout their Tri-State Band Festival participation, best exhibits the pride, spirit, enthusiasm, friendliness and unity of high school marching bandmen. In 1951 Ken Getman and other originators of the festival saw a need for an educational opportunity for bands to share ideas and see one another perform. This award commemorates the past ideas and future hopes of the Tri-State Band Festival. Judging for this award will be done by members of the Tri-State Band Festival Committee who have worked with and observed bands the entire day. The trophy must be returned yearly, but the band will retain the accompanying plaque.

SPECIAL UNIT AWARDS

Auxiliary Unit Plaques will be awarded in field competition to the top band in each category for drum major, flag corps, drum line and horn line. These plaques will be given in addition to the regular awards.

PARTICIPATION

Bands that do not place in the categories will receive a very presentable trophy for participating in the Tri-State Band Festival. All trophies will be awarded after the completion of the field competition.

ADJUDICATION

There are 7 judges evaluating each band: 2 Music Judges-Execution; 1 Marching and Maneuvering Judge-Execution; 1 Music Judge-General Effect; 2 Marching and Maneuvering Judges-General Effect; 1 Timing and Penalties Judge-Field Only. All judges, whether execution or general effect, shall work on a build-up scoring system.

SCORING SYSTEM

Point allotment:
 25 Points: Music-Execution
 25 Points: Marching and Maneuvering-Execution
 25 Points: Marching and Maneuvering-General Effect
 25 Points: Music-General Effect

The Tri-State Band Festival is sanctioned by the appropriate musical agencies in all states involved. It is also approved by the National Association of Secondary School Principals (NASSP) for their 1995-96 Advisory List of Contests and Activities.

Spacing of bands during the parade is required for judging purposes.



First Farmers & Merchants

NATIONAL BANK

We believe in you.™

Member FDIC. And the community.

303 E. Main
 Luverne, MN 56156
 507-283-4463

Norton/Continued from Page 2

That's why I got into creating programs. Now we can order tapes, directions and patterns for programs.

"That first year I was absolutely terrified. That was the year that it snowed all the time. We rescheduled and rescheduled (the winter program) and finally canceled. I never did that again. The kids were so disappointed. I made a lot of mistakes that first year. I had a lot to learn," she said.

Teaching and creating programs never became hum-drum. "It was blood, sweat and tears every year. One time I remember saying I didn't think things would ever come together, and I think it was Doris Korthank who said, 'You know, you say that every year.' I guess I needed the pressure. Like now. I don't know if I could write without the pressure."

Every year she tried to start with a theme in mind. "The hardest thing to decide was what the theme was going to be and get going. Themes varied from the serious to the lighthearted. She's done programs based on history, and she's done programs on Cabbage Patch Kids. In 1993, she received an award

"Teaching is never boring. It's demanding, but it's never boring. You never know what's going to happen. I've always felt fortunate. For me, it was a dream come true. I'd always wanted to do elementary music."

- Myrna Norton, parade marshal

from the Minnesota Historical Society for excellence in history curriculum for her program on the history of Luverne.

"That very first year, I discovered kids have a lot of ideas. You might have to tone them down a bit, but you find things that kids think are fun."

For the joy of singing

For her, teaching was never dull. Every fall she was excited about starting another year.

"Teaching is never boring. It's demanding, but it's never boring. You never know what's going to happen. I've always felt fortunate. For me, it was a dream come true. I'd always wanted to do elementary music.

"You have to be really enthused yourself. One of my most important goals was to

help kids enjoy and love music and to get them to try participating in it. Sometimes you had to do funny things (for programs) like Mr. Custer with an arrow through his head or for the Boston Tea Party, having the boys throw the boxes overboard. They'd sing if they could throw the boxes over. I suppose it was a type of bribery.

"The joy of it was the top priority," she said.

Music for the programs included "good" music with some of less long-term value. "Kids have a good ear for good music, but sometimes you have to get them into it with the other.

"Kids don't learn to sing on key all at the same time, but that shouldn't lessen the joy of participating. They don't have to be Pavarotti to enjoy singing. The joy of it is the essential element.

"I also learned this was a town that loved music. I think it's highly esteemed. We've always had a strong program. We always stressed finding kids with talents. And we wanted to give kids an opportunity to discover their talents."

Norton retrieved a Christmas program from several years back. One solo she wrote for a character expresses her thoughts as she retires.

When the song is ended, and the music dies away, the only sound is in my memory. I say they may sing kinda funny, a little bit off key, but they'll always sound beautiful to me.

Sometimes their hands are sticky, sometimes their hair's a mess, sometimes I find them noisy, I confess. But then I hear their laughter, and eyes like stars I see, And they always look so beautiful to me.

The years will pass so quickly, and they will grow so tall, Perhaps they won't remember me at all But I'll still hear them singing, their faces I will see And they will still sound beautiful to me.



Buy a Band Button!

They are \$2 before the Band Festival and \$3 on Sat., Sept. 30.



105 S. Estey Luverne, MN
Phone 507-283-4408

OPEN 7 DAYS A WEEK
Monday thru Saturday 6 a.m. to 10 p.m.
Sunday 8 a.m. to 6 p.m.

- Complete Deli & Bakery Departments • Mylar Balloons
- Quality Meats & fresh Produce • Dry Cleaning
- Travelers Express Money Orders • Ice
- Friendly Employees and Fast Service
- Copy Machine Available
- Fuji Film Developing




45th Annual Band Festival to feature a *different* Marine band

To those attending the 45th annual Tri-State Band Festival, the featured band may seem familiar, but it will be different.

Yes, the Marines are going to perform in the festival again, but this time it won't be the Commandant's Own, as the past guests to the Luverne

musical celebration have been known.

This year the 2nd Marine Aircraft Wing Band will be on hand to entertain the crowd.

The band was organized in 1943 during World War II in the Pacific Theater. It is

based at Marine Corps Air Station, Cherry Point, N.C.

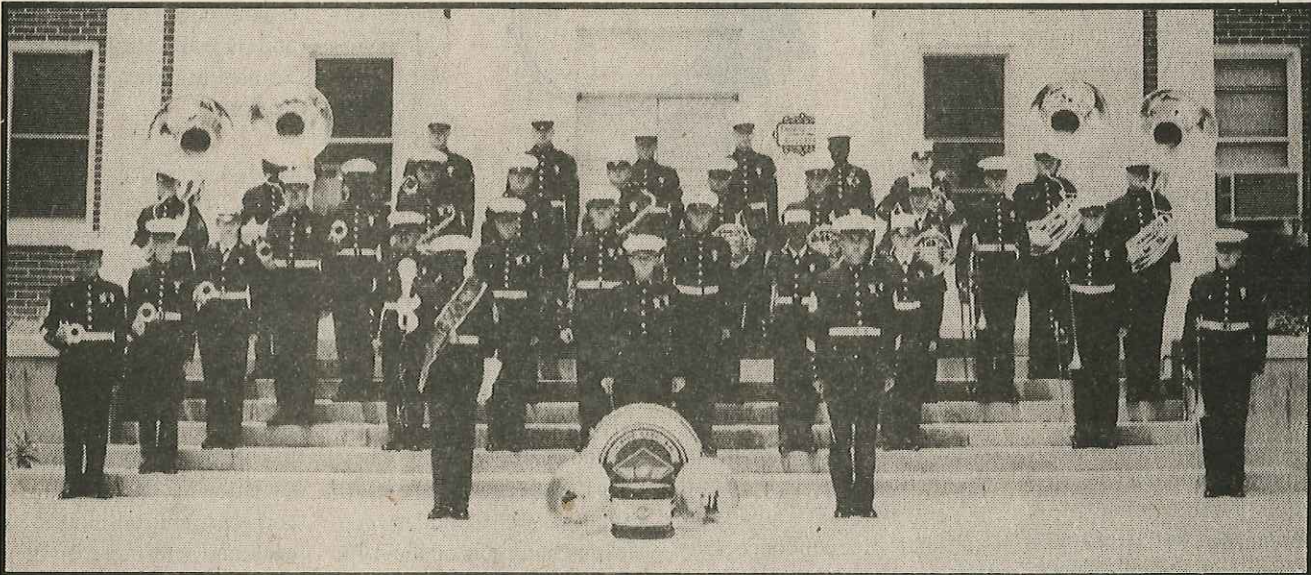
The band, under the direction of Chief Warrant Officer 3 Edward D. Harris, is comprised of approximately 50 Marine musicians.

The band is capable of performing as a ceremonial

unit; concert wind ensemble; big band; jazz combos; Dixieland; rock; country; and various chamber ensembles.

The group entertains in nearly 300 performances annually, including numerous performances for the president, the Kentucky Derby and the Indy 500.

WELCOME TO LUVERNE'S 45TH ANNUAL TRI-STATE BAND FESTIVAL



2d Marine Aircraft Wing Band from Cherry Point, North Carolina

M
MINNWEST
BANK
Luverne
116 East Main Street
Luverne, MN
507-283-2366
Member FDIC

MARINE CORPS MUSIC PROGRAM - TRADITION

Music is an integral part of Marine Corps history and tradition. The first Marine musicians were enlisted as drummers and fifers in the First and Second Battalions of the Continental Marines, authorized by Congress on November 10, 1775. In 1798, Congress established the United States Marine Band, the oldest organization of its kind in the United States. Since that time, Marine musical units have grown and set the tempo for new and exciting developments in Military music. For over two centuries, Marine musicians have continued the standard of excellence for which Marine musical units are known today.

1995 Band Festival Judges

Tom Haugen, Alexandria, is the music general effect and head judge.

He is a graduate of Luther College, Decorah, Iowa, and has completed graduate work at Bemidji State University in Bemidji.

In his 34th year of teaching, he is the associate band director at Jefferson High School, Alexandria. His duties include director of jazz studies, concert band and symphonic band and associate director of the pep and marching bands. His bands have been consistent Division I winners in state, regional and national competitions as well as guests performing at many conventions and festivals.

Recently the Jefferson High School Marching Band was named the grand champion of the 1994-95 Fiesta Bowl competition in Phoenix, Ariz. In February the Jefferson High School Jazz Band will appear at the Minnesota Music Educators annual convention.

Haugen is in constant demand as a judge, clinician and guest conductor throughout the U.S. and Canada. He is the past chairman of the Minnesota All-State Jazz Band and the MBDA Marching Band Affairs Committee.

Barry Peterson, Eagen, is a music execution judge.

He graduated with a bachelor of science degree in music education from St. Cloud State University.

He is actively involved as an adjudicator, clinician and com-

poser/arranger in the field of percussion.

He served as the percussion caption head for the Minnesota Brass Drum and Bugle Corps from 1991 through 1994.

John Anderson, Alexandria, is a music execution judge.

He is a graduate of Winona State University and has a master's degree from St. Cloud State University.

He teaches instrumental music in Jefferson High School, Alexandria, where he has taught the past 13 years. He is active throughout the Midwest, Texas, Colorado and California as a marching band and concert band adjudicator.

The Alexandria Marching Band has participated in the Cotton Bowl Parade, the Tournament of Roses Parade, the National Independence Day Parade and the Olympic Closing Ceremonies.

In 1991 the Jefferson High School Wind Ensemble performed at the Minnesota Music Educators Convention. The Jefferson High School Marching Band participated in the 1994 Fiesta Bowl parade competition in Phoenix, Ariz.

Ken Martinson, Fargo, N.D., is a marching and maneuvering execution judge.

He is graduate of Concordia College in Moorhead and is a graphic designer for an international software corporation. He is a free-lance color guard designer and currently works with two Minnesota high school marching bands.

His work with the Alexandria High school Band the past 11 years, as well as the Bertha-Hewitt Band the past eight years, has earned numerous top guard awards.

The bands have appeared in prestigious national events such as the Tournament of Roses Pa-

rade, Cotton Bowl Parade, National Independence Day Parade and Calgary Stampede. Bertha-Hewitt is a five-time class champion of the Vikingland Band Festival and a grand champion of the Cheyenne Frontier Days Parade. Alexandria was named sweepstakes champion of the 1994 Fiesta Bowl Parade in Phoenix, Ariz.

He marched with a DCI "Top 12" drum and bugle corps and in 1991 founded Alexandria's Vikingland Drum Corps Classic. He also was instrumental in establishing the Vikingland Band Festival which has become Minnesota's biggest summer marching band competition. He has served on judging panels at band competitions in Iowa, South Dakota

and throughout Minnesota.

William Van Devender, Oskaloosa, Iowa, is a marching and maneuvering general effect judge.

Van Devender has been a band director for 36 years and is in his 30th year in the Oskaloosa Community School system in Oskaloosa. He teaches in the junior high and directs the 7th and 8th grade band. He specializes in low brass and gives lessons to all of the low brass players throughout the entire system. On the district and state level, he serves as chairperson on the Junior High Affairs Committee in the state of Iowa and is past president of the South East Iowa Band Association.

He has served as a drill and music instructor with the Oskaloosa High School Marching Band, which toured and competed on a national level throughout the country, for 18 years.

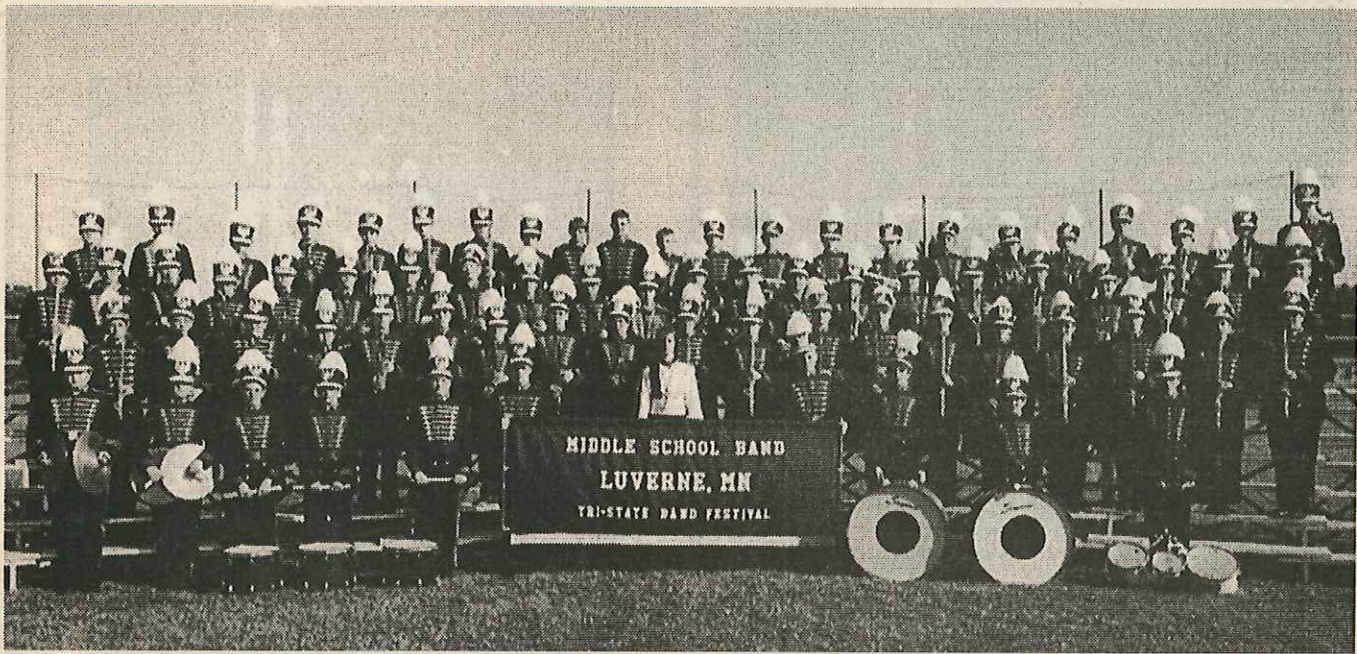
He is an adjudicator for the Iowa High School Music Association in concert, marching and solo and ensemble contests and is a member of the National Federation of Judges. He has been a marching band adjudicator throughout the U.S., in all captions, for the past 21 years and has been guest clinician for numerous festival bands.

Richard Dufault, Waseca, is a marching and maneuvering general effect judge.

Dufault received his bachelor

Judges/Continued on page 13





Luverne Middle School Band hosts 1995 Tri-State Band Festival

The host band for the 45th Tri-State Band Festival is the Luverne Middle School Band. The seventh- and eighth-graders in the band will march in the parade playing "Free Spirit." The band is directed by Mary Goheen.

Edward D. Jones & Co.®

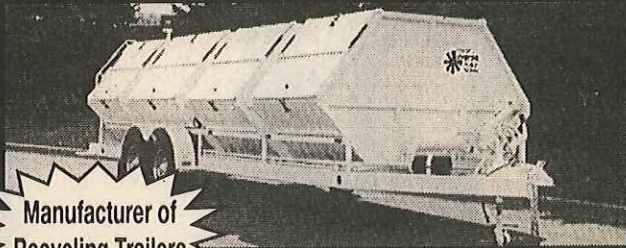
Member New York Stock Exchange, Inc. and Securities Investor Protection Corporation



Earl Hanson
INVESTMENT
REPRESENTATIVE

101 EAST MAIN
P.O. BOX 626
LUVERNE, MN 56156
Bus. (507) 283-4469
Toll Free 800-243-4469

CTM COR-TECH MFG.



Manufacturer of
Recycling Trailers

MACHINING & REPAIR

Behind Taco John's • 411 West Gabrielson Road •
Luverne, MN

New loader blades - Re-flight augers - New cylinder kits -
Keyways in shafts - Press work - Make new axles -
Rebuild gear boxes - Big grinder shafts -
Lathe & Mill work - Hitches on all types of vehicles -
Aluminum Welding

Monday-Friday 7 a.m.-5:30 p.m. • Saturday 7 a.m. - Noon

PHONE 507-283-9081

CECE'S

208 E. Main • Luverne, MN • 507-283-2156

Affordable • Casual • Comfortable
Clothing and Jewelry
(Junior, Misses & Women's Sizes)

Come & see the neat things
at terrific prices.



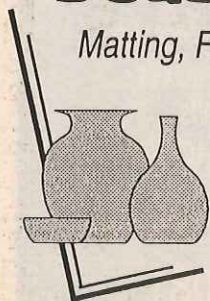
Eyes on the prize

The sweepstakes trophy spent the year in Waseca but time will tell which band will bring it home.



Deuschle Studio

Matting, Framing, Handmade Pottery



Jerry & Kathy Deuschle
1012 N. Cedar
Luverne, Minnesota
(507) 283-8477

"Taking care of your matting and framing needs throughout the Tri-State area"



We Have

30% - 50% MORE SELECTION

Than The Dept. Stores & You

SAVE 30% - 50%

Sale Thursday - Saturday
Sept. 28, 29 & 30

CREEGER COAT COMPANY

211 E. Main • Luverne, MN • 507-283-4449



Photo by Carole Olson

Terry's trophies

Terry Reisch, Luverne, constructed all of the trophies for the festival. Reisch has owned Terry's Trophies since May.

TERRY'S TROPHIES



Trophies & Plaques
Custom Engraving
Free Delivery
Terry Reisch, owner
211 S. Donaldson
Luverne, MN
507-283-2234

**We supplied & engraved 1995
Tri-State Band Festival Trophies!**

Welcome to Dairy Queen...
For a cool treat or a hot meal!



**HOT EATS
COOL TREATS.**



brazier.

Luverne, MN
Phone 283-9082
Open 10:30 a.m. to
10 p.m. Sun.-Thurs.
10:30 a.m. to 11 p.m.
Fri. & Sat.

We Treat You Right®

Dairy Queen® stores are proud sponsors of the Children's Miracle Network
Telethon, which benefits local hospitals for children.

© AM D.Q. Corp. 1993

© Reg. U.S. Pat. Off., AM D.Q. Corp.



Specials good thru
Sunday, Sept. 30th

SPECIAL

Bring in a band button & get

10% off

total purchase
excluding sale merchandise & cigarettes

STORE HOURS:

- Mon.-Fri. 8 a.m. to 8 p.m.
- Saturday 8 a.m. to 5 p.m.
- Sunday 12 noon to 5 p.m.



Luverne

No Coolers Allowed on the Field.

Welcome to the 45th
Annual Tri-State
Band Festival!



2 for
\$2

2 Quarter
Pounders® with
Cheese for \$2⁰⁰

LIMITED TIME OFFER.



I-90 and S. Hwy. 75, Luverne, Minn.

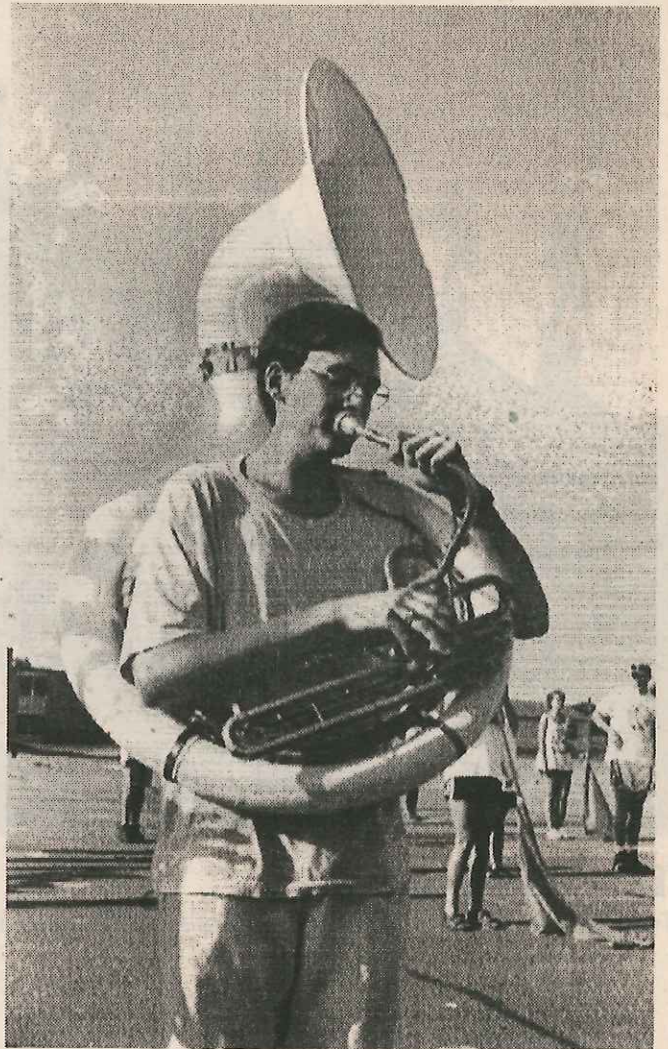


Photo by Ingrid Sanden

'Tis the season

Luverne High School band members gathered from 8 a.m. to noon each weekday from July 31 to Aug. 11 and each morning before school to prepare for marching season. Pictured above is Matt Tilstra, a senior at Luverne High School.

Fred's Body Shop

Now available,
collision repair on the

CHIEF E-Z-LINER



For unutilized body damage, we use the Chief EZ Liner II to accurately and quickly repair your car to manufacturer's specifications.

303 W. Edgehill

Luverne, MN

PHONE 507-283-2728

Lloyd, your band idea was a dandy

This article was printed in a September 1970 issue of the Rock County Star Herald.

The board of directors of the Luverne Chamber of Commerce were sitting at a meeting one day in 1951 discussing community events.

The topic of conversation turned to what things people enjoy, and someone made the comment, "Everybody enjoys a parade." Somebody else mentioned something about bands. Lloyd Herreid was a member of the board. He asked the question, "Why don't we have a parade of bands?"

The idea captured the imagination of the board. As it so often happens, a person who makes a suggestion is faced with the challenge, "It is your idea, see if you can make it work," and Herreid was elected chairman of the project.

Herreid could see at the outset that the task wasn't going to be an easy one if the event was going to amount to anything, so he immediately enlisted a working force: Nor Manion, Warren Schoon, Hugh Connell, Maggie Christensen, Al Gruber, Doc Getman, Lloyd Rapp, Ray Ronlund, Russ Forrest, Hugh Fay, Boyd Rolph, 'Sparky' Johnson, Larry Brinkman, Don Levey and Lawrence Foight.

During the weeks that followed, more and more enthusiasm was generated. Besides a parade, they decided, why not have a marching contest and give trophies? And why

not have some pretty queens in the parade?

They had to give it a name, so it was decided to call it the Tri-State Band Festival.

The date for the festival was set for Oct. 6. Fifteen bands came: Marion, Canton and Alcester, S.D.; Windom, Worthington, Pipestone, Hills, Tracy, Beaver Creek and Luverne, Minn.; and Sioux Center, George, Hawarden and Sheldon, Iowa.

Miss South Dakota, whose talent in the Miss America contest was baton twirling, accepted the invitation to be in the parade.

The rest is history.

Twenty years later, the Tri-State Band Festival is still the most popular of all band events in the Tri-State area.

Many other communities have hosted similar functions, but the one in Luverne is the one which has gained the most prestige and maintained it throughout the years. This year, 27 bands will be here.

Lloyd Herreid's idea has resulted in a combination that's unbeatable - young people, music, parades and friendly competition.

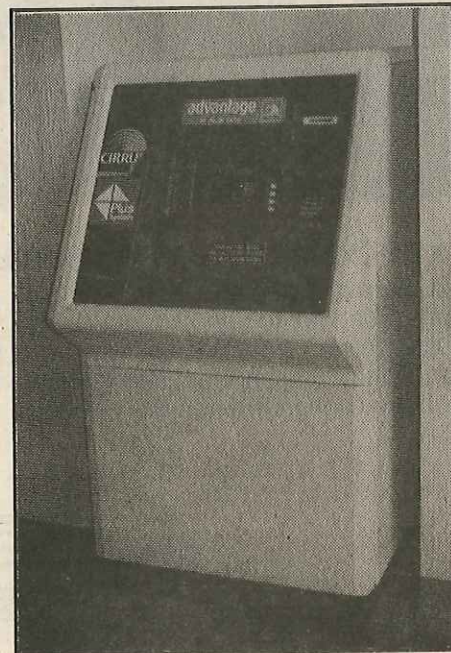
So a tip of our hat to Lloyd Herreid for coming up with the idea and to those who have since been carrying on the Tri-State Band Festival. It's one of the great things that have happened to Luverne.

Cash

24 hours a day
with our



WHEN... YOU NEED IT
WHERE...



Advantage

- Available 24 hours at our office in Luverne, located on S. Hwy. 75.
- Use your card nation-wide where you see the Cirrus symbol.



First
NATIONAL BANK AND TRUST

Pipestone • Luverne • Magnolia • Beaver Creek

Financial leadership for Southwest Minnesota

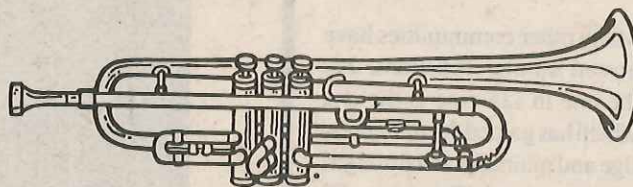
Member FDIC



Photo by Carole Olson

45th Tri-State Band Festival Committee

Local volunteers and Chamber staff members work all year to make the annual Tri-State Band Festival a success. Pictured are (front, left to right) Norma De Jongh, Marcia Bork, Deb Fick, Paula Theilbar, Anna Van Batavia, Lezlie Jensen, Dale Nelson, John Siebenahler, Craig Boysen, (on steps) Keith Aanenson, Dave Smith, Bill Stegemann, La Nita Usher, Darla Fransen, Pam Haakenson and Kim Boysen. The festival is set for Sept. 30. Committee members not pictured are Glenda Bremer, Mary Goheen, Terrie Gulden, Mike Haakenson and Kyle Oldre.



Have you tried our NEW Chicken Fajitas?



- 9 Different Pizzas
- Chinese Stir-Fry
- Lasagna (2 sizes)
- Bread Sticks & Sauce
- Breakfast Pizzas
- Dessert Pizzas
- Beef & Bean Burritos

116 West Main • Luverne, MN
507-283-2501 or 1-800-261-2694

HOME DELIVERY SERVICE AVAILABLE



Prudential Life Insurance

Serving the Tri-State area for over 47 years

Timothy J. Burns

Licensed in South Dakota, Minnesota &
Iowa

119 E. Main • Luverne, MN



Photo by Carole Olson

Button designer

Rachel Ennenga, daughter of Doug and Carla Ennenga, Magnolia, designed the button for the 45th annual Tri-State Band Festival. She is pictured with Pam Haakenson, chairman of the band festival button committee. Luverne High School art students submitted button designs for committee consideration. Ennenga is a sophomore at LHS.

Judges/From Page 6

of science degree from St. John's University and his master's degree from Mankato State University. He was nominated for Teacher of Excellence in Minnesota and Outstanding Music Educator in Minnesota.

He recently retired from teaching in public schools after 30 years of service at Jeffers High School (three years), Sherburn High School (eight years) and Waseca High School (19 years).

His Waseca bands were noted for their excellence in all areas of instrumental music. The Marching Jays have been consistent winners in the marching competitive arena. Some of the noteworthy records under Dufault were set at the Tri-State Band Festival in Luverne where the band has won the sweepstakes trophy eight times with a current five-string win.

His marching bands have performed in Canada, Wyoming, Michigan, New York, Florida, Texas and Arizona.

Bands under Dufault have enjoyed success in the marching and jazz areas, but the center of the band emphasis has always been the concert band with a strong effort in the solo and ensemble area.

He was a member of the Minnesota Music Educators governing board as well as a long-time member of the Minnesota Chapter of Phi Beta Mu.

As a Waseca teacher association member Dufault also served as president of the Waseca Education Association and was teacher of the year in 1982-83. He has served as a clinician and adjudicator in South Dakota, Nebraska, Iowa, Illinois and Minnesota for the past 20 years.

**Welcome to the 1995
Tri-State Band Festival!**



**6" Cold
Cut Combo
Meal Deal** **\$2.79**
plus tax



1-90 &
S. Hwy. 75,
Luverne, MN
507-283-4133

9 a.m. to 12 Midnight Sun.-Thurs. • 9 a.m. to 2 a.m. Fri. & Sat.

**Welcome to Luverne & the
Tri-State Band Festival!**



See what FORD has for 1996

•Fords •Mercurys •Ford Trucks



Herman Motor Co.
ROCK COUNTY'S ONLY FORD & MERCURY DEALER
312 EAST MAIN, LUVERNE Phone 283-4427

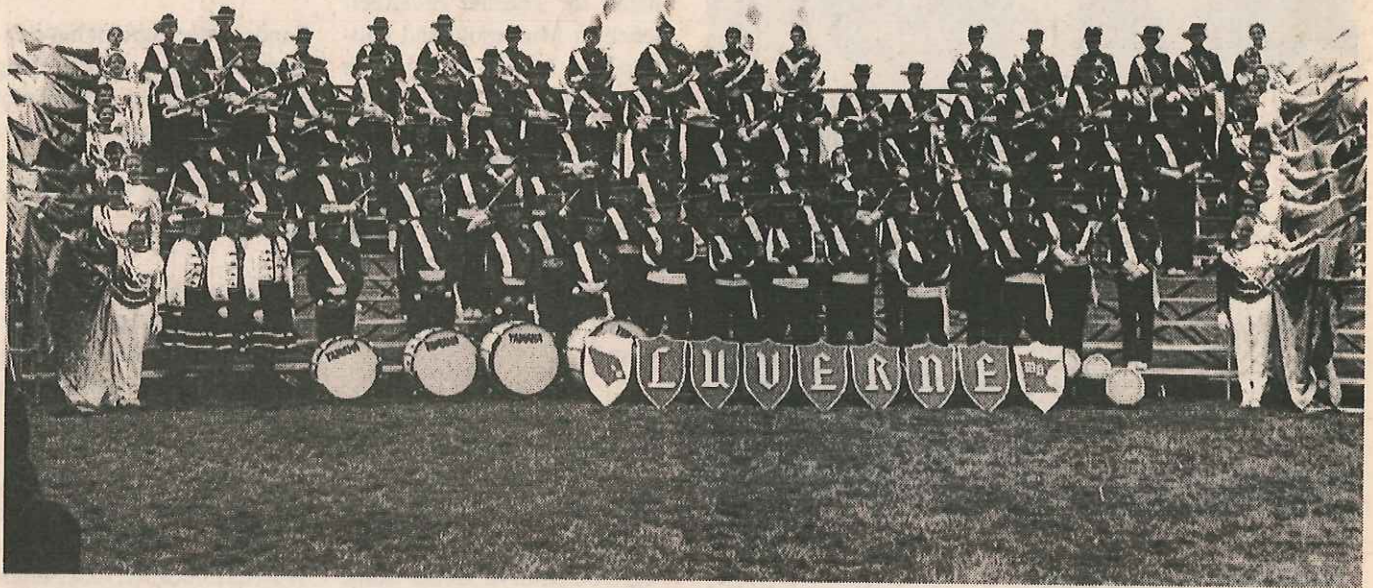
**James M.
Sonntag**



1020 North Jackson St.
Luverne, MN 56156
Phone
507-283-2299



LUTHERAN BROTHERHOOD
A Family of Financial Services for Lutherans



Luverne, MN

Luverne's band is under the direction of Dale Nelson and Mary Goheen. Drum majors are John Gulden, Lindsay Cronin and Gretchen Papik. Senior high school enrollment is 450.



Luverne Eagles Club
 312 West Harrison, Luverne, MN
 Phone 507-283-9661

Open 4 p.m. Weekdays & 1 p.m. on Saturdays
 Happy Hour: 5:30-6:30 p.m

LADIES NIGHT every Wednesday night
 MEN'S NIGHT every Thursday night

The Eagles Club is available for any non-profit organization to use. Call the Club Manager at 283-9661 if you're interested in booking the Eagles Club for wedding receptions, class reunions, parties, etc.

Buffalo Ridge
INSURANCE

First National Bank Bldg.
 South Highway 75
 Luverne, MN
 Phone 507-283-2381



Marilyn Bloemendaal, Cory Bloemendaal, Pam Haakenson
 CPCU

Auto
 Home
 Business
 Life
 Health
 Investment

**We hope you enjoy the
 45th Annual Tri-State Band Festival!**

Rock County



Heartland Express
 Transportation available for all ages. . .all incomes!

NOW Transportation **Call 283-2343**
 to Medical Facilities **8 a.m.-5 p.m. - Monday thru Friday**
 in Sioux Falls. **Discounted Coupon Books Available!**

311 West Gabrielson Road • Luverne, MN

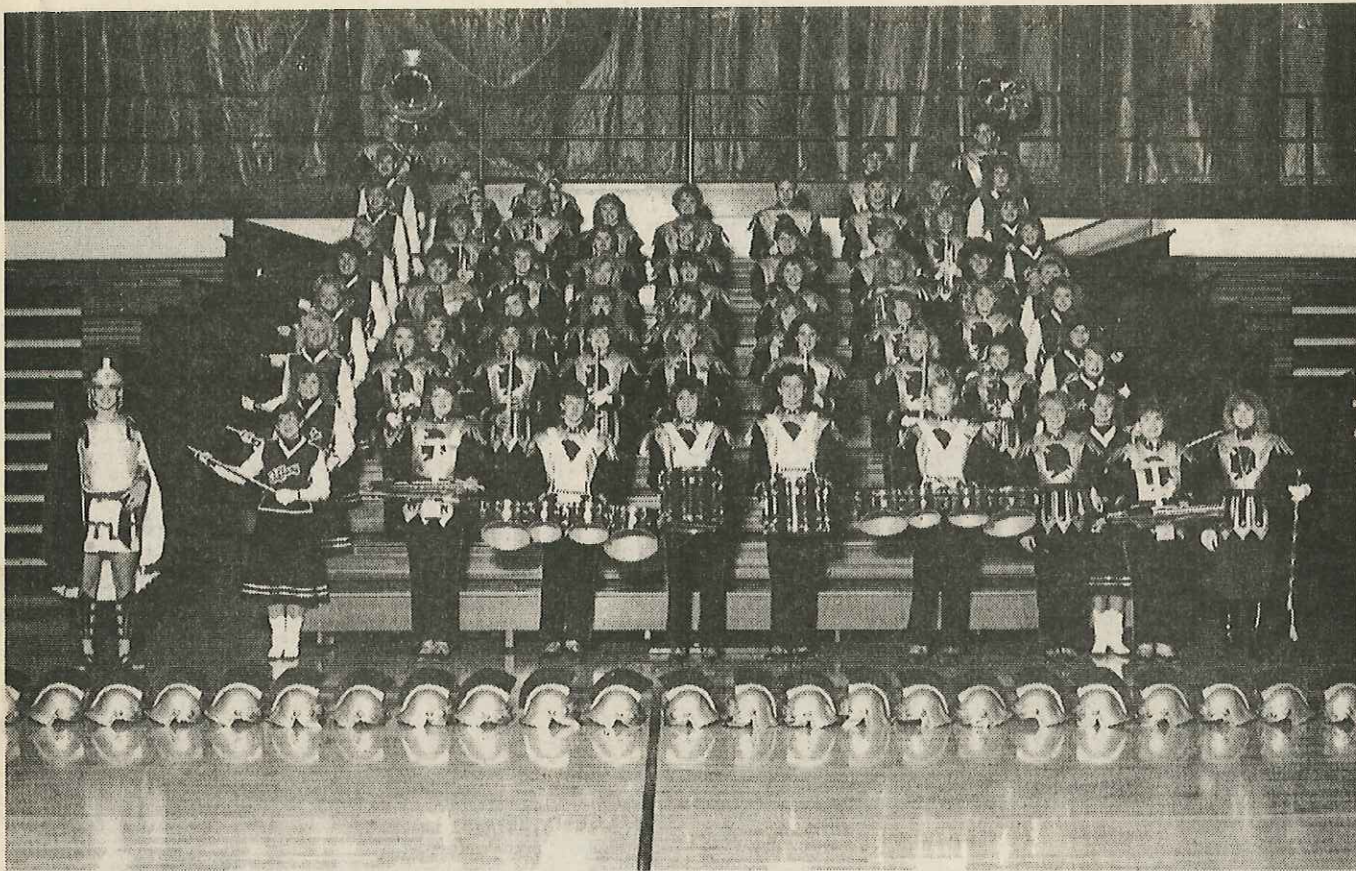
Welcome to the 45th Annual
Tri-State Band Festival!

We wish all of the participants in the
 Tri-State Band Festival the
BEST of LUCK!!

SHAW DRUG
 Phone 283-4709 or after hours 283-2138
 Derald - Linda - Geneva - Arlene - Mary - Janet

PCS Member - FREE DELIVERY





Worthington, MN

Worthington High School Band is directed by Clay Wachholz. The band has appeared at the Tri-State Band Festival for 25 years. The band will appear in the parade competition only. Drum majors are Jennifer Galstad and Jessie Roos. School enrollment is 850.

Busse Plumbing, Heating and Air Conditioning

Ken Busse

OUR NAME ALONE
WILL MAKE YOU FEEL
COMFORTABLE.



Residential & Commercial Heating & Cooling

Busse Plumbing, Heating and Air Conditioning

213 W. Maple, Luverne, MN, Phone 507-283-2529

Pamida

Hometown Values

Main & Blue Mound • Luverne, Minnesota

"SIMPLY"

will not be undersold!

Bring in a competitor's ad & we'll match the price!
NOW...There's no reason to shop anywhere else!



Auto Glass & Collision Repair

104 N. Spring, Luverne, MN

Phone 507-283-8711

CRAGOE

Real Estate Agency

419 East Main • Luverne, MN • 507-283-2647

**Homes • Acreages • Commercial
Land • Lake Property • Mobile Homes**

- Gene Cragoe - Home 507-669-6911
- Lowell Binford - Home 507-283-8385
- Bob Zinnel - Home 507-283-2695
- Gert Wessels - Home 507-283-4410
- Leon Pick - Home 507-283-8151
- Mary Pick - Home 507-283-4721





Adrian, MN

Adrian High School Marching Dragons will appear only in parade competition this year. They have performed at the Tri-State Band Festival since its beginning. The band is under the direction of Paul Swick. Christy Vastenhout is drum major. School enrollment is 170 students.

Good Luck

Adrian Dragons Marching Band
in Tri-State Band Festival Competition!



P.O. BOX 129 322 MAINE AVENUE
ADRIAN, MINNESOTA 56110
PHONE: 507-483-2447

Member F.D.I.C.

Luverne Farm Store

- Feeds
- Fertilizers
- Chemicals
- Lawn Supplies

Gary Golla

South on Hwy. 75 • Luverne, MN • 507-283-9555

Good Luck To All Participating Bands

Tollefson Publishing



Slayton, MN

The Murray County Central High School Band will appear in parade competition only. The band is under the direction of Donna Larson. The band has appeared on and off over the past 20 years. Tammy Johnson, John Stern and Elizabeth Andert are drum majors. School enrollment is 307 students.



"More Than Just A Convenience Store"
 601 East Main 302 S. Kniss
 507-283-9970 507-283-9902

- Pizza - whole or by the slice
- Donuts, Rolls & Cookies - made daily
- Hot Sandwiches - variety available
- Hot Potato Wedges • Ice Cream Treats & Candy
- Pop, Coffee, Hot Chocolate & Tea • Clean Restrooms
- Gas and Automotive Supplies

OPEN 6 a.m. to 11 p.m. - 7 Days a Week!



Luxury Limousine of Luverne

Licensed & Insured For
 Interstate Travel
 MN157428
CALL 507-283-9639
 OR
1-800-295-9639

Welcome to the Tri-State Band Festival

All-You-Can-Eat

PIZZA & CHICKEN BUFFET

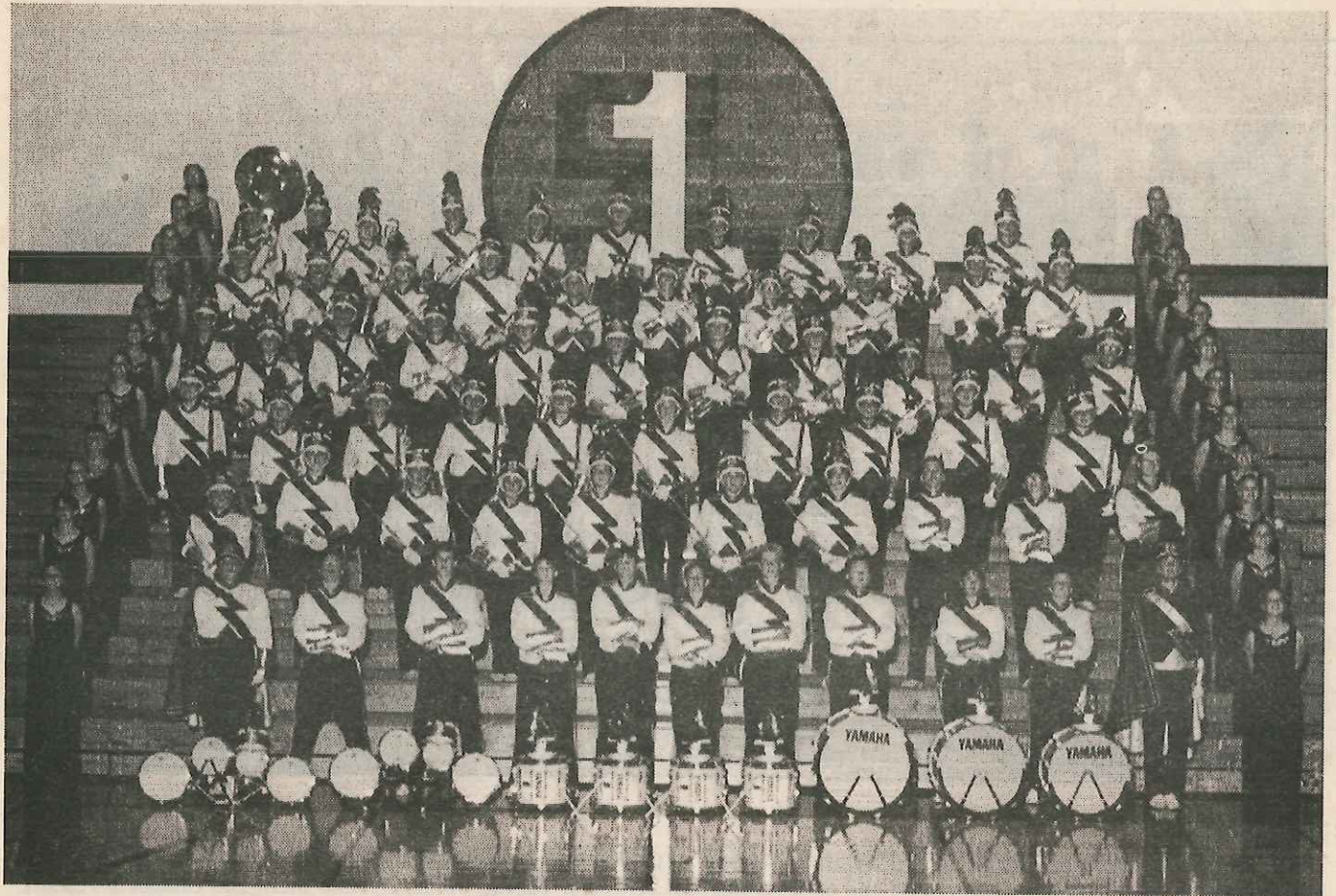
11 a.m. to 2 p.m.-Saturday, Sept. 30

Includes pizza, chicken, broasted potatoes and salad bar

The Pizza Ranch®

"Home of the Pizza Lover's Pizza"®

110 East Main
Luverne, Minnesota
Phone 283-2379



Spirit Lake, IA

Spirit Lake High School Band is making its eighth appearance in the Festival. The band is under the direction of Boyd Perkins. Drum majors are Lisa Donnenwerth and Chris Ford. Enrollment is 422 students.

-- DIS IS DA MENU --

Luverne VFW (South Hwy. 75) - Open Monday - Saturday

<p>APPETIZERS</p> <p>Potato Skins \$3.95 Covered with Bacon Bits, Cheddar, Sour Cream, & Green Onion</p> <p>Cheese Basket \$3.95 Delicious Deep Fried Mozzarella & Cheddar Cheese Balls</p> <p>Nacho Basket \$3.50 Tortilla Chips smothered in Hot Cheese with Tomato, Jalapenos, and Sour Cream. Side of Salsa</p> <p>Onion Ring Basket \$2.95</p> <p>Basket of Fries \$1.95</p> <p>With Hot Nacho or Cheddar Cheese & Bacon Bits \$2.75</p> <p>Breaded Steak Cubes \$5.50 (When available) 24 oz. basket</p> <p>FULL DINNERS Dinners Include Toast, Salad, and Fries or Baked Potato</p> <p>16 oz. Top Sirloin Steak \$8.95</p> <p>8 oz. Top Sirloin Steak \$5.95</p> <p>Jumbo Shrimp Dinner \$7.95</p> <p>NEW Surf N'Turf Combo \$9.95 8 oz. Top Sirloin and 3 Jumbo Shrimp, Includes Toast, Salad, and Fries or Baked Potato</p> <p>SEA SPECIALS</p> <p>Shrimp Basket \$4.25 With Fries or Salad</p> <p>Kitchen Hours: Monday - Thursday 5:30 - 10:30 Friday & Saturday 5:30 - 11:00</p>	<p>BURGERS, BURGERS BURGERS</p> <p>(All burgers are 1/2 pound on a 4" Kaiser Roll with: lettuce, tomato, onion, pickle & mayo unless otherwise requested) (All burgers served with fries or side salad)</p> <p>V-Burger \$4.50</p> <p>Mushroom & Swiss \$4.75</p> <p>Bacon Cheeseburger \$4.75</p> <p>Patty Melt \$4.75</p> <p>Thunder Humper \$4.75</p> <p>CHICKEN FIXINS</p> <p>Chicken Breast Sandwich \$4.50 With Swiss & Bacon, served with Fries or Salad</p> <p>Chicken Strips \$4.50 Served with Fries or Salad and choice of Bar-B-Que or Sweet & Sour Sauce</p> <p>SUPER SALADS</p> <p>Chef Salad \$4.25 Fresh Garden Lettuce, Ham, Turkey Julienne, Tomato, Egg Wedges, Swiss & Cheddar Cheese, Onion & Choice of Dressing</p> <p>1/2 Chef \$3.00</p> <p>Shrimp Louie Salad \$4.50 Topped with Tiny Shrimp, Egg, Tomato, and our Special House Louie Dressing</p> <p>1/2 Shrimp Louie \$3.25</p> <p>Side Salad \$1.75</p> <p>SPECIAL SOUP</p> <p>Firing Squad Chili Try a cup or a bowl of the best chili around.</p> <p>Cup \$1.95 Bowl \$2.95</p>
---	---

Luverne V.F.W.
South Hwy. 75, Luverne 507-283-4942

*Welcome to the 1995
Tri-State Band Festival*

QUALITY USED CARS

CONNELL CAR CARE

509 East Main Luverne, Minnesota
Phone 507-283-2341

After Hours: Dave Connell 283-8690
or Don Spease 283-2750

PALACE VIDEO

MOVIE RENTALS AND ARCADE

111 E. Main • Luverne 507-283-2737 1039 Oxford • Worthington 507-372-7050 301 W. Main • Marshall 507-532-6134

**We Sell Pop & Candy During
The Band Festival Parade!**



Inwood, IA

West Lyon Community School High School Band is under the directorship of Lynette Wedeking. Jane Knobloch and Jodi Snyders are drum majors. The band will compete in both parade and field competition. The school has 317 students enrolled.

Tri-State Band Festival Button



SALE

To all customers wearing a Tri-State Band Festival Button, The Luverne Style Shop will discount:

10% off

the purchase of any dress, blouse, slack, skirt, sweater, purse, hat or knitwear item!

Sale good thru Saturday, Sept. 30

Buy your Band Buttons at the Luverne Area Chamber of Commerce Office.

Luverne Style Shop

202 East Main Street • Luverne, Minn ^c

PRESCRIPTIONS



Luverne

Rock Rapids

507-283-9549

712-472-3983

Your  Pharmacy.



Sturdevant's Auto Supply

505 East Main
Luverne, Minnesota 56156
Phone 507-283-2371

Steve Popp, Manager

45th Annual Tri-State Band Festival ORDER OF PARADE AND



<u>PARADE NO.</u>	<u>FIELD TIME</u>	<u>STREET ORDER</u>
1.		VFW & Legion Color Guard
2.		Luverne Fire Department
3.		Girl Scouts & Boy Scouts
4.		Luverne Float
5.		Luverne Mayor (William)
6.		Luverne Middle School
7.		Parade Marshal (Myrtle)
	12:45 p.m.	National Anthem (Luv
8.		Adrian, MN
9.	1:00 p.m.	Boyden-Hull, IA
10.	1:15 p.m.	North Kossuth - Swea
11.		Westbrook-Walnut Gr
12.	1:30 p.m.	West Lyon - Inwood, I
13.		Tracy Area, MN
14.		Elk Point-Jefferson, S
15.		Murray County Centr
16.	1:45 p.m.	Sioux Center, IA
	2:00 p.m.	Sibley-Ocheyedan, IA
17.	2:15 p.m.	Madison, SD
18.	2:30 p.m.	Maurice-Orange City-
19.		Lennox, SD
20.	2:45 p.m.	Pipestone-Jasper, MN
	3:00 p.m.	15 Minute Break (Fie
21.	3:15 p.m.	Luverne, MN
22.		New Richland-Hartla
23.	3:30 p.m.	Maple River - Maplet
24.	3:45 p.m.	Spirit Lake, IA
25.	4:00 p.m.	Washington - Sioux F
26.		Worthington, MN
	4:15 p.m.	North - Sioux City, IA
27.	4:30 p.m.	Brandon Valley, SD
28.	4:45 p.m.	Waseca, MN
	5:00 p.m.	Marshall, MN
29.	5:15 p.m.	2d MARINE AIRCRA
	5:35 p.m.	OLYMPIC RETREAT
	5:45 p.m.	AWARDS CEREMON



Tri-State Insurance
One Roundwind Road, Luverne, Minn
a subsidiary of W.R.

Band Festival AND FIELD TIME



CLASS

uard ent ts			
n Weber) Band a Norton) erne Sr. High Band)	(Host)		
	(Parade Only)	A	
		A	
City, IA ve, MN	(Parade Only)	A	
		AA	
	(Parade Only)	AA	
	(Parade Only)	AA	
l - Slayton, MN	(Parade Only)	AA	
		AA	
	(Field Only)	AA	
		AAA	
loyd Valley, IA	(Parade Only)	AAA	
		AAA	
		AAA	
l-Ellen-Gen, MN , MN	(Parade Only)	AAA	
		AAA	
ls, SD	(Parade Only)	AAAA	
	(Field Only)	AAAA	
		AAAA	
		AAAA	
	(Field Only)	AAAA	
T WING BAND	(Guest Band)		

PARADE TIME:

10:00 a.m.

Main Street, Luverne

FIELD EXERCISES:

1:00 p.m.

Luverne High School

Field Gates will open

at 12:00 p.m.

****No Coolers Allowed
On The Field****

The Tri-State Band Festival committee members wearing white jackets with red lettering will be more than willing to help anyone who may have questions or need directions on the day of the festival. Feel free to use this service.

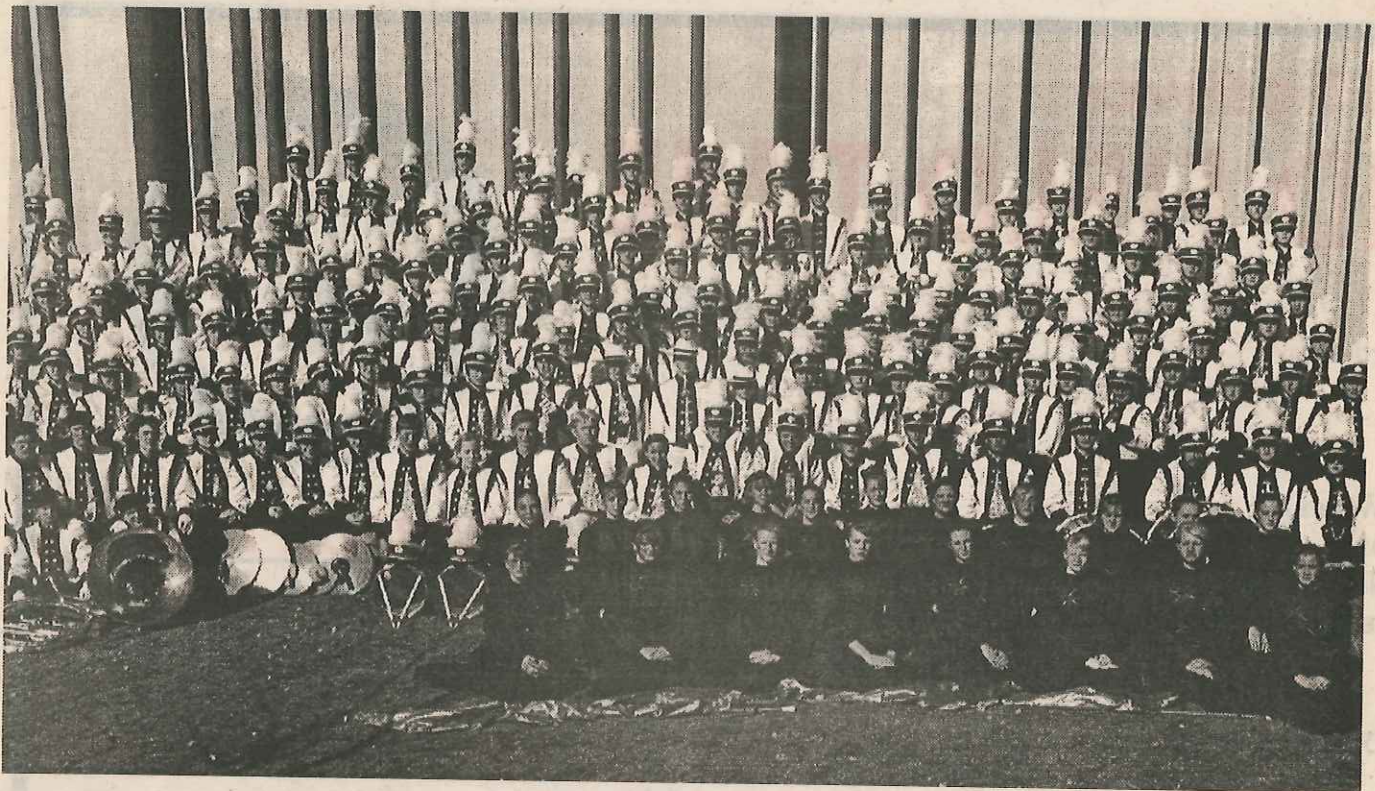
**Handicapped parking &
seating available.**

**Welcome to Luverne.
We hope you enjoy the
Tri-State Band Festival!**

Company of Minnesota

ota 561 56-9989 (507) 283-9561

erkley Corporation



Sioux Falls, SD

Washington High School Marching Band will make its second appearance at the Tri-State Band Festival. The band is under the direction of Gary Pederson and assistant director, Rick Jensen. Drum majors are Justin Hurst, Tim Beckler and Emily Breitag. High school enrollment is 1,800.



South Hwy. 75
Luverne, MN 56136
507-283-4216
1-800-240-4294

All States Realty Inc.
***Real Estate is our
ONLY Business...***
And we work at it full time!

Edwin Elbers, broker
Home 283-8047

Ray Hoogeveen
home 283-2095

Bob Jarchow, Audrey Aanenson, Evelyn Bremer, Bud Bush, Ken Husen,
Keith Luthje, Ida Reverts, Roger Spease, Joyce Wessels & Terrie Gulden

**WE'VE ONLY
ACCOMPLISHED
ONE THING IN
OVER 50 YEARS.**

We've made water better.
At Culligan International, we have over 50 years of water improvement experience. If you'd like to find out how we might improve your water, call your local Culligan Man.

114 N. Kniss Luverne, MN
PHONE 507-283-9105

*TRY
CULLIGAN
MAN!*

Culligan.
Trust The Experts...

© 1990 CULLIGAN INTERNATIONAL COMPANY
Since Culligan Dealers are independently operated, offers and participation may vary.



FULL REFUND
*of purchase price of old serger
toward the purchase of a new*
5-Thread HUSKY LOCK Serger
Hurry, offer is limited!
THE SEWING BASKET

 204 E. Main • Luverne, MN • 507-283-9769 90 days same
 Viking & White Sewing Machines & Sergers as cash - with
approved credit.

Enjoy the 45th Annual
Tri-State Band Festival!

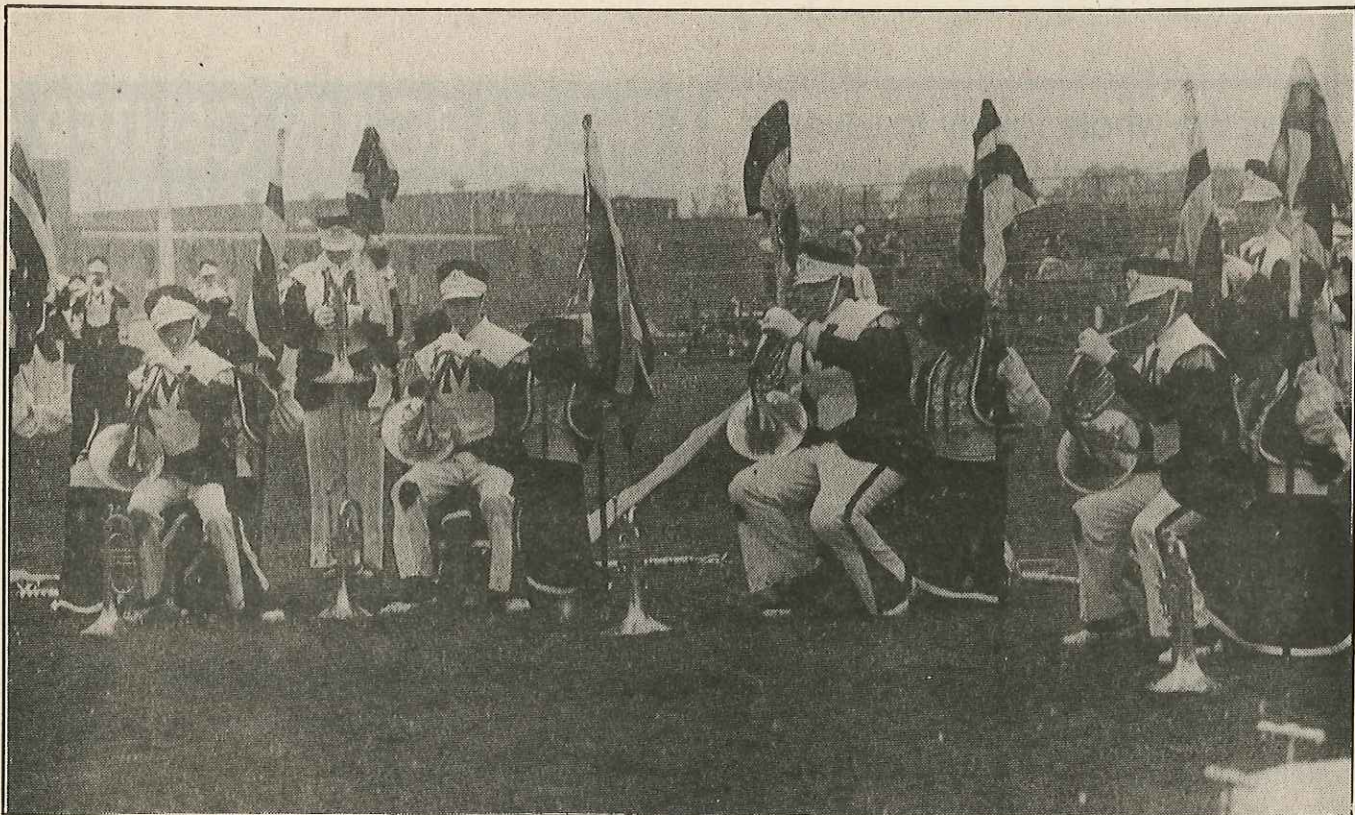
bis Berkley
Information
Services

10 Roundwind Road, Luverne, MN
Phone 507-283-9195 • FAX 283-2627



Elk Point, SD

The Elk Point-Jefferson Public School Marching Band will make its first appearance in the parade competition this year. The band is directed by Larry Petersen. Drum majors are Stana Donnelly and Cara Briggs. School enrollment is 275 students.



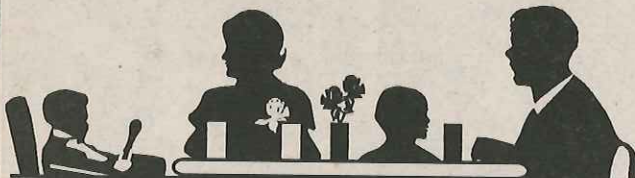
During the 1985 Tri-State Band Festival, field competition took place in the mud after a rainy, snowy day dampened festivities. Above, Marion french horn players sit on the knees of their fellow flag carriers during their field routine. From the looks of their muddy knees, they had previously taken their turn in the flag carriers' position on the ground.



Westbrook, MN

Westbrook Walnut Grove Charger Marching Band will attend the Tri-State Festival for the first time this year and appear in the parade competition. The band is under the direction of Thomas J. Vondracek with drum major Wendy Wagner. Senior high school enrollment is 178.

Bring the whole family to Luverne
for the Tri-State Band Festival



BREAKFAST SPECIALS 6:00 a.m. to 11:00 a.m.

- French Toast and 2 links
- 1 Egg, 2 strips of Bacon and Toast
- 2 Eggs and Toast
- Diced Ham and Scrambled Egg with Toast

LUNCHEON SPECIALS 11:00 a.m. to 2:00 p.m.

- Cup of Vegetable Beef Soup w/Beef Sandwich
- Ham Dinner w/spuds and gravy, vegetable or coleslaw, and roll
- Cup of Chili w/Cheeseburger
- Hamburger w/French Fries
- 2 pcs. Chicken w/spuds & gravy, vegetable or coleslaw, and tea roll

CHICKEN TO GO

10 pcs. Broasted Chicken,
and Family Fries

\$6⁷⁵
To Go!

Phone
283-9321

**The
Pantry**

Downtown
Luverne

C

THE BARGAIN CENTER

118 S. McKenzie, Luverne • 507-283-8013

Just in Shipment of NEW FURNITURE

- Sofas • Loveseats
- Recliners • Dinettes • End Tables
- Coffee Tables • Glide Rockers

Always a nice selection of good, used merchandise.



**Turbes Drealan
Kvilhaug & Co., P.A.**

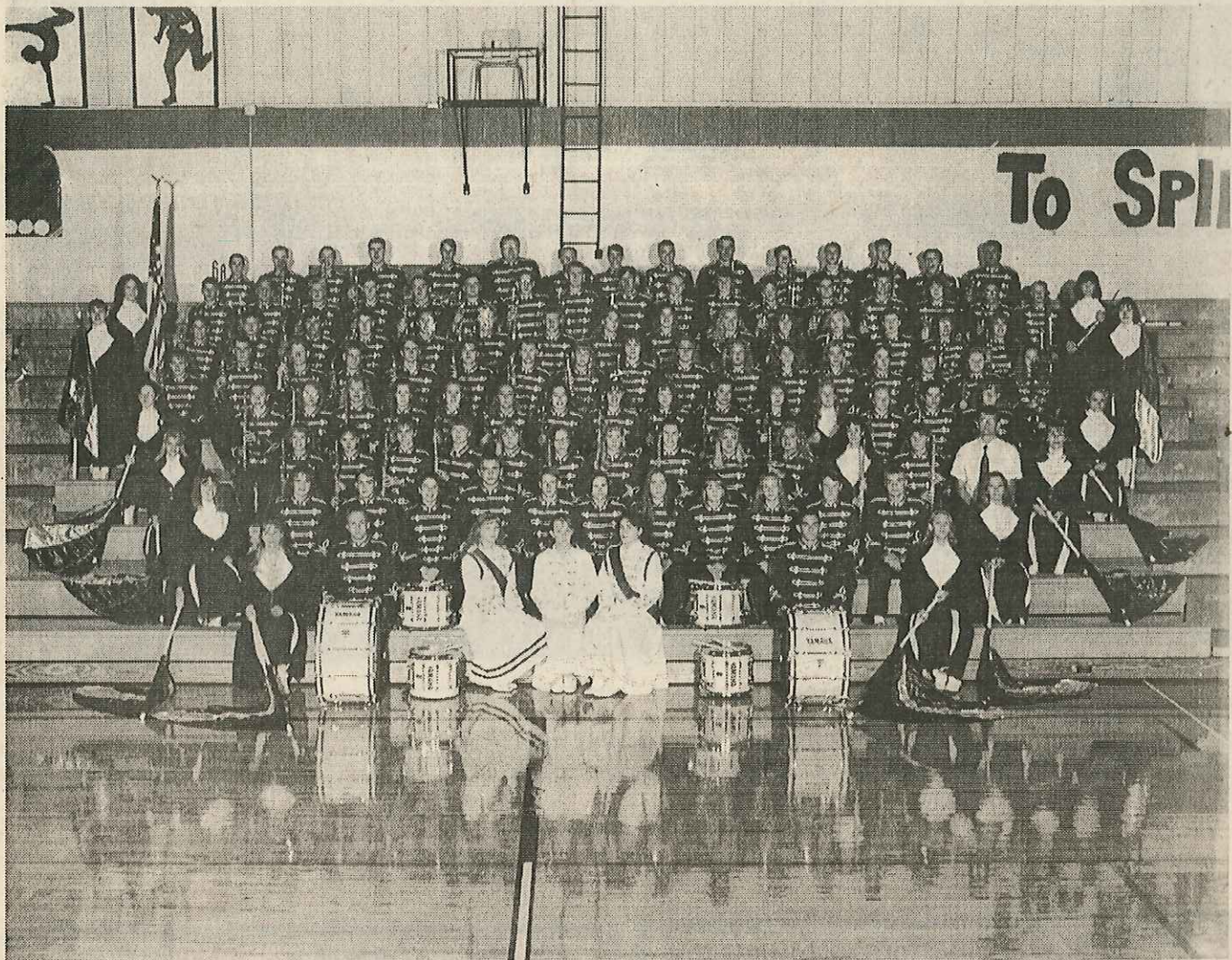
Certified Public Accountants

- Financial Statements
- Accounting Services
- Tax Service - - Corporate & Individual

114 West Main

Luverne, MN

507-283-2116



Tracy, MN

Tracy Area High School will compete in the parade competition in its eighth year at the Festival. Chris Miller directs the band. Drum majors are Dawn Buysse, Dacia Verlinde and Holly DeSmet. Senior high school enrollment is 320.

Roundwind Travel

110 West Main, Luverne, MN
Phone 507-283-2308 or 1-800-227-3273

**Remember, there is NO
CHARGE for our SERVICE!**

Airlines - Cruises - Amtrak - Bus Tours
Hotel/Motel Reservations - Car Rentals

DUG OUT PLUS

- Pawgs, Slammers & Containers
 - Magic Cards Available
- Fishing Equipment & Tackle Accessories
 - Sports Cards & Supplies
- Ceramics, Collectibles & Miniatures
 - Sprints & Stock Cars - all sizes
 - Collector Sport Plaques & Clocks

Game room with pool tables & video games, food & pop machines.
OPEN 11 a.m. to 11 p.m. - 7 DAYS A WEEK

124 E. Main • Luverne, Mn • 507-283-4107



Pipestone, MN

Pipestone-Jasper High School has competed at the Tri-State Band Festival every year since its beginning in 1951. The band is directed by Robert Carlson and assistant director Georgia Taylor. Drum majors are Nancy Torkelson, Erin Hellie and Kelly Gillin. Enrollment is 431 students.

We salute the Pipestone Arrows Band
at the Tri-State Band Festival!!

Good Luck in competition!

Fall Fashions for Young Adults

Fashion choices from:

- Double Exposure
- APEX
- Levi
- Beetlehead
- B.U.M.



- Z Cavaricci
- Northern Isle
- Jantzen
- California I.V.Y.
- Lawman
- Rafaella

Wilson's

Fashions for Him
on the Mall • Pipestone, Minn.
825-3166

the other place

Fashions for Her
on the Mall • Pipestone, Minn.
825-2113

Hours: Monday-Friday 9 a.m. to 5 p.m., Thursday 9 a.m. to 8 p.m.,
Saturday 9 a.m. to 5 p.m.

SO JO's

Sportswear

122 W. Main
Pipestone, MN
507-825-2906
Sue Fey
Home 777-4164

- Sweaters • Letter Jackets • Socks
 - Nylon Jackets • T-Shirts
 - Sweatsuits • Hats
- in YOUR school colors!

COMPUTERIZED EMBROIDERY
for teams, parents or individuals!

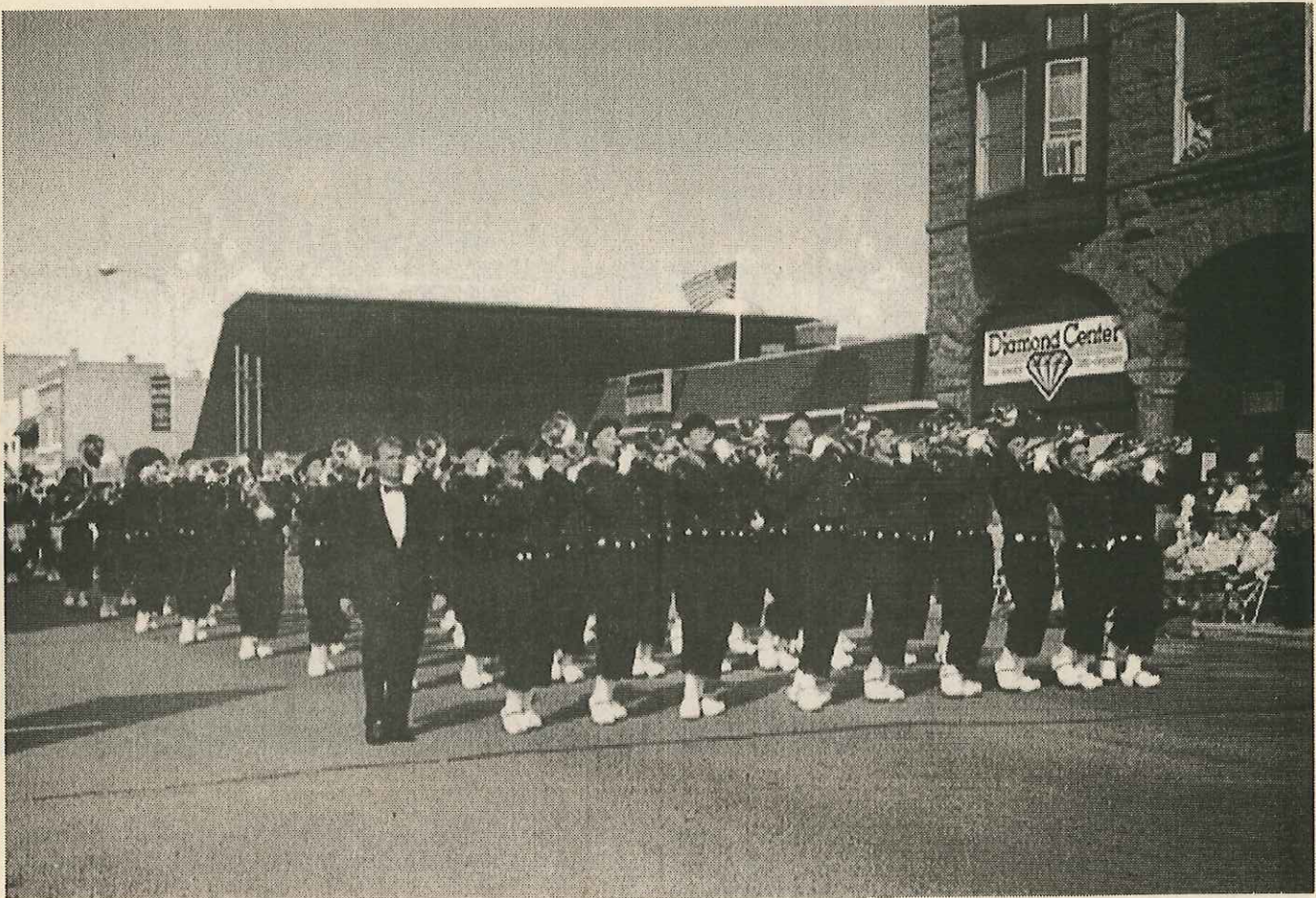
Lookin' Great
Expert Hair Care

NEXXUS

PAUL MITCHELL

NEW SERVICE *Pedicures*

MAKE YOUR APPOINTMENT TODAY!
109 East Main Street • Luverne, MN 56156
507-283-2052 or 1-800-950-4407
Rosalia Baumgard, owner



Maurice-Orange City/Floyd Valley, IA

The Pride of the Dutchmen Marching Band under the direction of Steve Connell, a 1970 graduate of Luverne High School, and assistant director James S. Moen will participate in both parade and field events. Robyn Smit and Amber Blom are drum majors. Senior high enrollment is 425.



Roger Achterhof



Paul Alink

FGL Commodity Services

106 East Main, Luverne, Minnesota 56156
Phone 507-283-9101

W & W Welding & Machine

204 West Hatting

Luverne, Minnesota



Farm welding, portable welding, millwork, brazing, cutting lathe work, custom built trailers, stock point for oxygen and acetylene.

- 24 Hour Service -

Shop Phone
507-283-2260

Dean Wenzel
owner

Home Phone
507-283-2528



**Welcome to Luverne's
45th Tri-State Band Festival!**

Good Luck to all Participating Bands!

Smith Furniture

Downtown Luverne, Minnesota

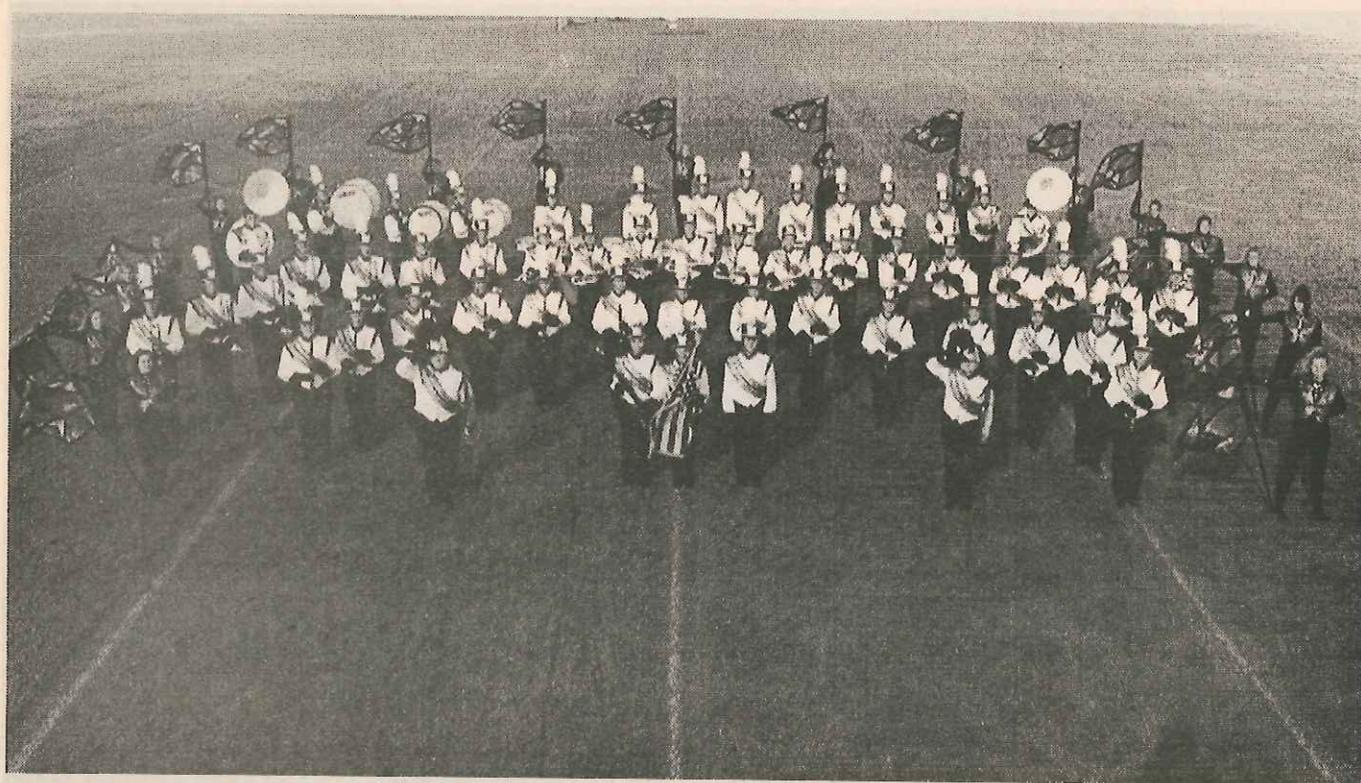
Hours: Monday-Friday 9 a.m. to 5:30 p.m.

Thursday evenings till 9:00 p.m.

Saturday 9:00 a.m. to 5:00 p.m.

Phone 507-283-4368





Mapleton, MN

Maple River High School Band is directed by Rebecca Carpenter. The band will make its second appearance in the Tri-State Festival. Drum majors are Karyn Kruse and Dana Goettlicher. Guard captains are Shannon Sullivan and Lisa Bach. Drumline captains are Dan Kunkel and Matt Holland. School enrollment is 405.

Good Luck to all Band Festival Participants!

Vander Kooi Law Office, P.A.

Benjamin Vander Kooi, Jr.
Attorney at Law
127 East Main, P.O. Box 746
Luverne, Minnesota
Phone 507-283-9546

TODD'S I-90 MOBIL

South Highway 75, Luverne, Minnesota
PHONE 283-8797

Mobil & All Major Credit Cards Accepted

Some of the Shop Services available:

- FREE Brake Inspection
- Brake Repair
- Oil Change
- Tune-up
- Car Cleanup, Wash & Vac



Open 6:00 a.m. to 10:00 p.m. 7 days a week

K J's



Korner Bar

Kathy & Randy Johnson, owners
Hardwick, Minn.
Phone 507-669-2322

We're available

for birthday parties,
Christmas parties,
wedding dances,
anniversary parties
or any time you
want to party!

Open 8 a.m. to 1 a.m.
Monday-Saturday
Grill on 11 a.m. to 10 p.m.
ON-OFF Sale Mon.-Sat.



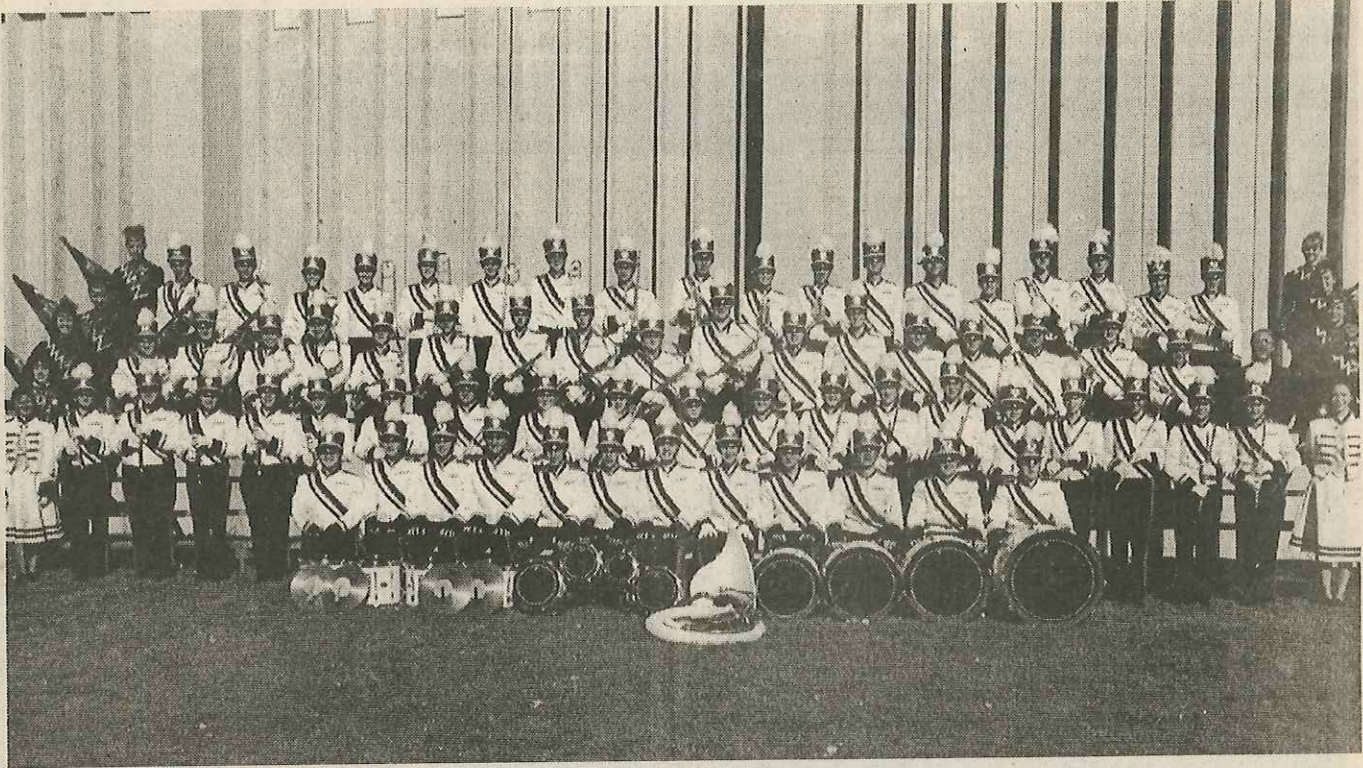
Custom Printing & Computerized Embroidery

- T-Shirts
- Sweatshirts
- Caps
- Jackets

**NO JOB TOO BIG OR TOO SMALL!
FREE ESTIMATES!**

Sue's Shirts & Sportswear

207 East Main, Luverne, MN • Phone 507-283-8538



Lennox, SD

The Lennox High School Band is under the direction of Robert Reid. Drum majors are Gina Poppens and Sara Lund. The band will appear in parade competition only. There are 450 students in Lennox High School.

Luverne Flowers and Greenhouses



811 West Warren
Luverne, Minnesota 56156
Phone 507-283-4451

Full service
floral and
landscaping!
Plant Now
For Spring!



Jim's Auto Sales and Service
of Luverne, Inc.
See Jim or Irwin



Bring your vehicle to Irwin. He specializes in automotive electronics.



Certified Technician.

24 Hour Towing
Service
Truck & Semi
Towing



507-283-8146

After Hours: 507-283-4276 or 1-800-620-6501
24 Hour Towing Service • We Rent Cars

For all of your
•Housewares
•Paint •Appliance
•and Hardware
Needs, See Us!

Just Ask RENTAL

For all of
your rental needs!

LUVERNE TRUE VALUE

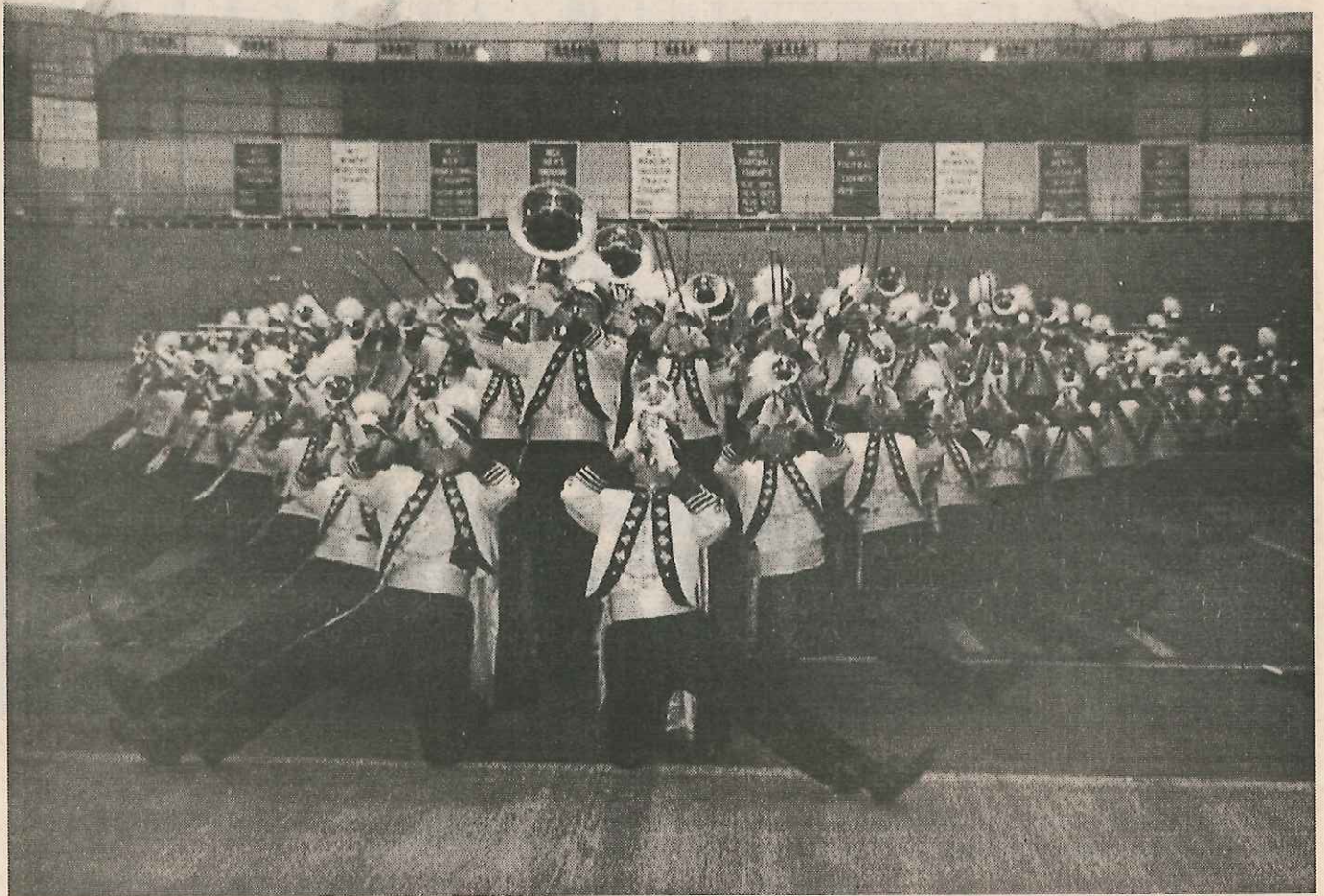


PHONE 283-8068

Highway 75 South, Luverne, MN

MOST MAJOR CREDIT CARDS ACCEPTED

STORE HOURS:
Monday thru Friday
8 a.m.-5:30 p.m.
Thurs. evenings
till 9 p.m.
Saturday 8 a.m.-5 p.m.
Closed Sunday



Madison, SD

Madison High School has competed for more than 20 years at the Tri-State Band Festival. The Spirit of Madison is directed by Dennis Hegg and assistant director Dan Mortenson. Drum majors are Jessica Lemme, Kristin Sanford, Steve Sims and Katie Ericsson. Enrollment is 480 students.



Welcome to the 1995 Tri-State Band Festival



Linda L. Wenzel, LUTCF

102 S. Cedar
Luverne, Minnesota 56156
Business 507-283-9103
Residence 507-283-2528

FARM BUREAU
FAMILY OF FINANCIAL PLANNING SERVICES



**Buy a
Band
Button!**

They are \$2 before
the Band Festival and
\$3 on Sat., Sept. 30.



Boyden-Hull, IA

Boyden-Hull Community School Comet Marching Band is making its first appearance in the Tri-State Band Festival since 1986. Nancy Schuerman is the band director. Drum major is Matt Landman. High school enrollment is 180 students.

EXHAUST PROS



NEW for your convenience!
TOLL FREE 1-800-840-7150

Maynard's Exhaust Pros

404 S. Kniss, Luverne, MN Phone 507-283-0025
Mon.-Fri. 8 a.m.-5:30 p.m., Sat. 8 a.m.-12 Noon
"Only what you need...at a price guaranteed"

LARRY'S ANTIQUE FURNITURE & REFINISHING

Larry Swenson

507-283-2275

Directions: 4 miles north of Luverne on Hwy. 75, turn west on County Road 20, go 3 miles west, then go north about 1/10 mile.

**Welcome to Luverne's
Tri-State Band Festival!**

RENFRO *Variety Store*

*It's the FUN place to shop
for all your needs!*

206 East Main Street, Luverne, Minnesota
PHONE 507-283-2628
Margaret Vegge, owner

OFFERMAN & COMPANY
LUVERNE COMMODITIES
STOCKS & BONDS
IRAs

Robert Loosbrock

REGISTERED REPRESENTATIVE

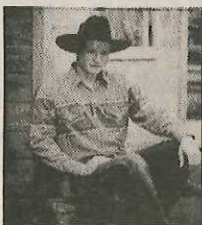
Call Toll Free
1-800-950-4561

313 E. Main
Luverne, MN 56156
Call Collect
507-283-9575



New Richland, MN

New Richland-Hartland-Ellendale-Geneva Panther Marching Band is under the direction of Jamie Skjeveland. The band is led by drum major Jake Williams. Enrollment is 377 students.



*Portraits
with Style*



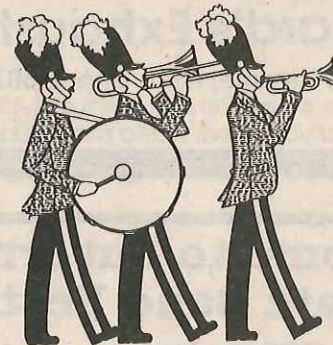
mybri
studio

118 West Main
Luverne, MN 56156
(507) 283-4325

We urge everyone to take the day off & attend the

**TRI-STATE
BAND FESTIVAL**

Good luck to all bands in the competition!!



Confident in the future of Luverne & the surrounding areas.

Latham Agency, Inc.

Insurance

126 E. Main • Luverne, MN
507-283-9181

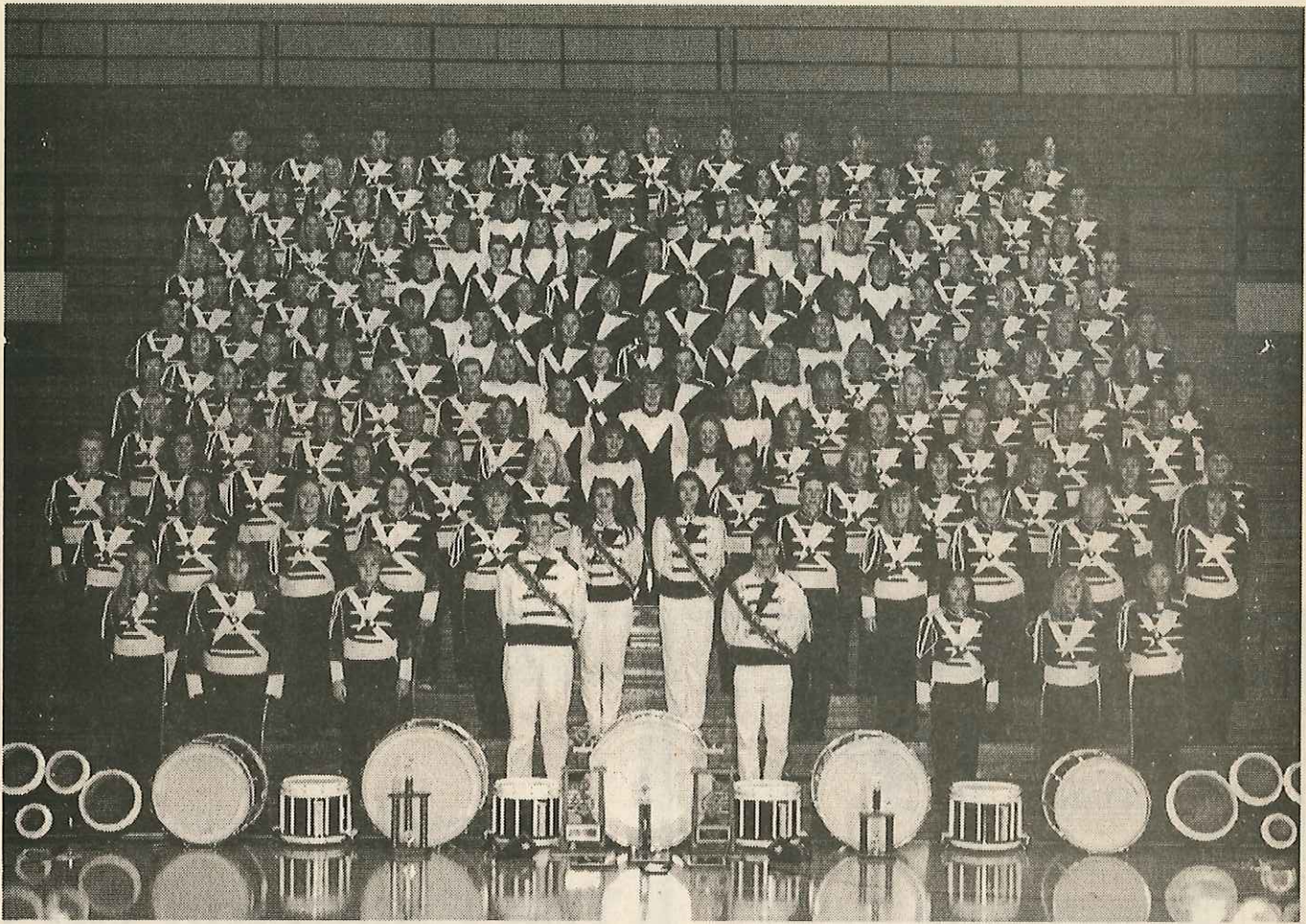


**LUVERNE
BUILDING
CENTER**

102 East Maple
Luverne, MN
Phone 507-283-9151
Larry Voss &
Sam Berghorst

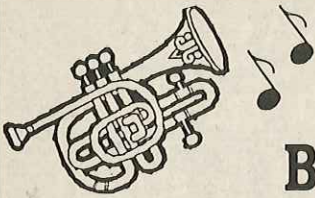
Lumber - Windows - Cabinets - Siding
Plywood - Doors - Vanities - Cement - Steel
Paint - Paneling - Fencing - Roofing
Hardware - Ceiling Tile - Insulation

OPEN Monday thru Friday 7:30 a.m. to 5:30 p.m.
Saturday 8:00 a.m. to 12:30 p.m.



Marshall, MN

Marshall Senior High School Band is under the direction of Wayne Ivers. The band has appeared at the festival more than 25 times. Karis Ridley, Joe Mulder, Kristi Huettl and Michelle Koch are drum majors. Enrollment is 880 students.



Welcome to the
**Tri-State
Band Festival!**

NELSON AUTOMOTIVE

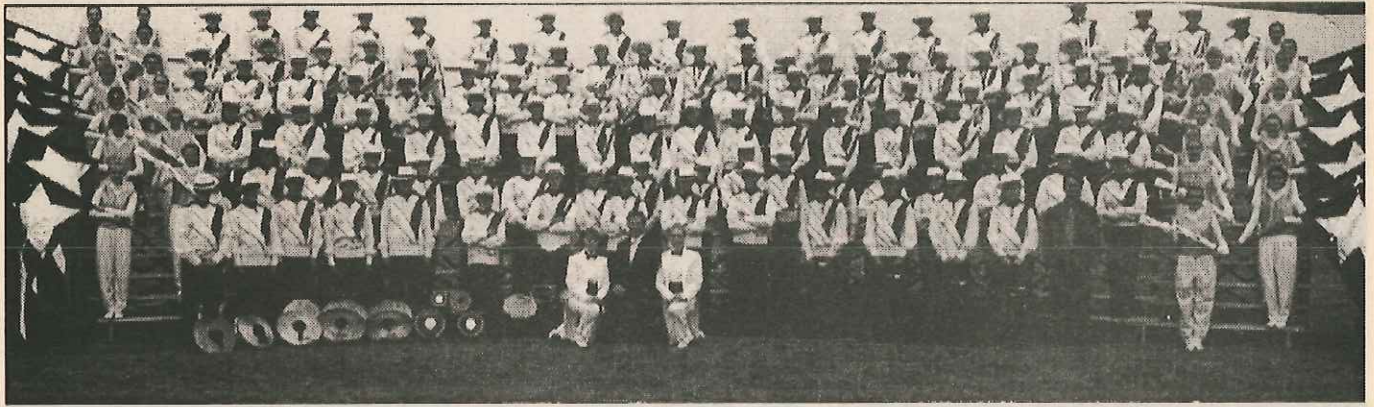
126 West Main Street • Luverne, Minnesota
507-283-8659

Enjoy The Band Festival!



More Than You Imagined™
South Hwy. 75, Luverne, MN
Phone 283-4562
Sunday-Saturday 11 a.m. to 10 p.m.
Drive Thru Extended Hours - Friday &
Saturday 11 a.m. to 11 p.m.

Welcome to the 45th Annual
TRI-STATE BAND FESTIVAL!



Sibley, IA

Sibley-Ocheyedan High School is competing in the Tri-State Festival for its 20th time this year. The Marching Generals are under the direction of Kelly Jacobsma with assistants Luci Ferrin and Hans Willadsen. They will appear in field competition only. Drum majors are Renae Rubsam, Amie Hartwig and Sarah Huisenga. Enrollment is 320 students.

**Band Festival
Sat. Nite
Special!**

SIRLOIN FOR TWO

With two baked potatoes & two house salads

Only \$19⁹⁵ Served from 5 p.m.-10 p.m.

Lounge: Mon.-Sat. 4:30 p.m.-1:00 a.m.

Dining Room: Mon.-Thurs. 5-9 p.m., Fri. & Sat. 5-10 p.m.



Magnolia BAR, LOUNGE & STEAK HOUSE, INC.

located at I-90 & South Hwy. 75, Luverne
Phone 283-9161

- Insurance
- Accounting
- Income Tax Service

The Estenson Co.

123 West Main, Luverne, Minnesota
Phone: 507-283-2386

Welcome to Luverne! "We Service What We Sell"

- Muzzle Loading • Guns & Accessories • Licenses
- Fishing Supplies • Scopes & Binoculars
- Loading Supplies • Archery Supplies

Full Service Licensed Gunsmith

HARVEY'S

Trading Post, Inc.

Hwy. 75 & Main • Luverne, MN

507-283-8158

Welcome to Luverne's 45th Tri-State Band Festival

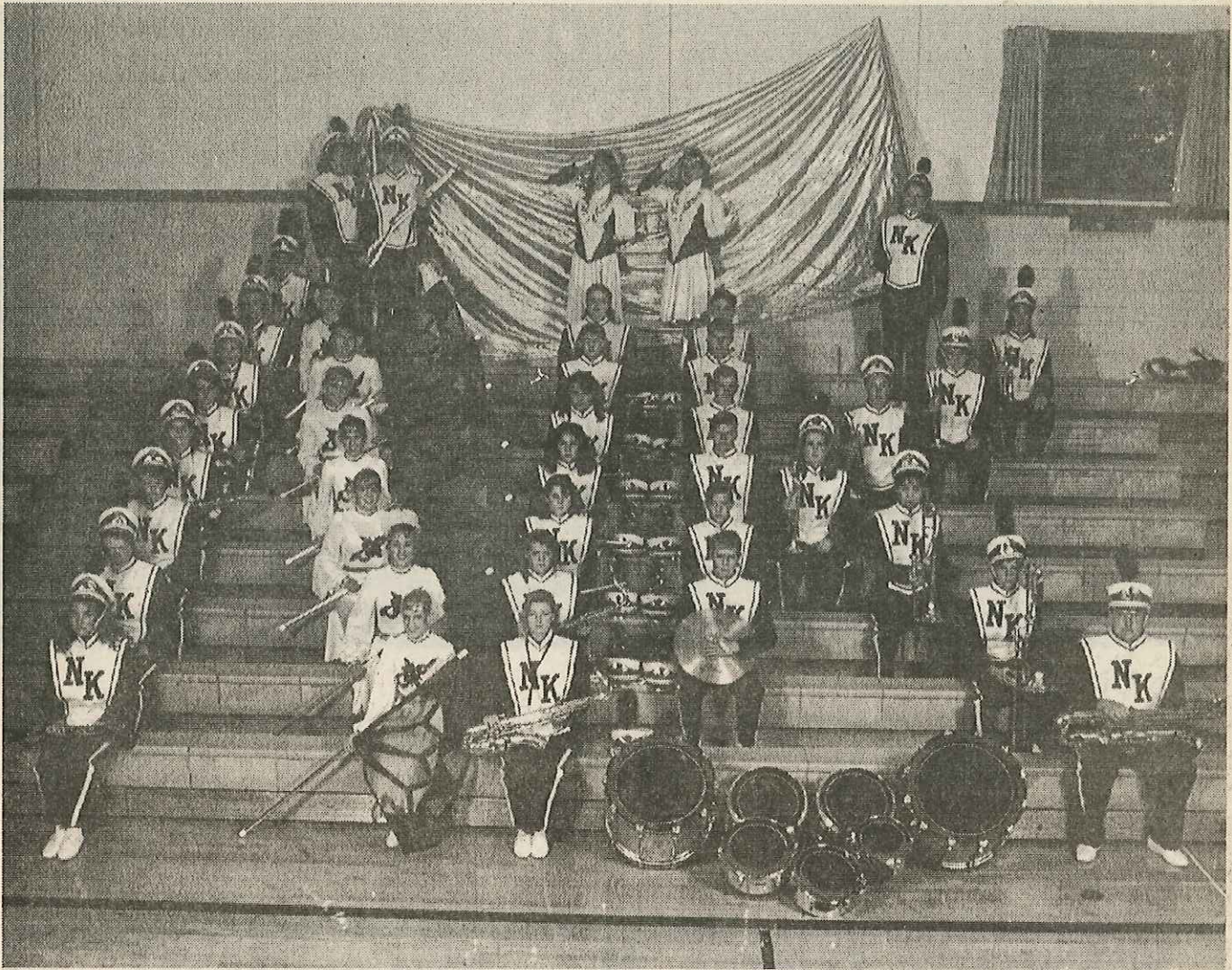


We hope you
enjoy the day
and come back
again next
year!



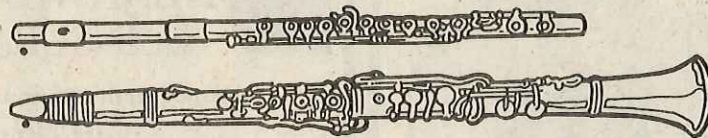
Buy a Band Button!

They are \$2 before
the Band Festival and
\$3 on Sat., Sept. 30.



Swea City, IA

North Kossuth High School will compete in the Tri-State Band Festival for the first time this year. Stephanie Kaufman and Betty Lou Jones are the band directors. Drum majors are Brandon Schrauth and Brandy LaRow. Megan Krantz is flag captain. School enrollment is 176.



Welcome to the 45th Annual
Tri-State Band Festival!

COOK'S

No Tax On Clothing & Shoes

- CLOTHING FOR MEN
220 E. Main, Luverne, MN, Phone 283-9617
- LADIES WEAR
217 East Main, Luverne, MN, Phone 283-8224
- MEN'S/LADIES SHOES



33% Photo Savings

• One or Two Sets of 3" Std. Prints

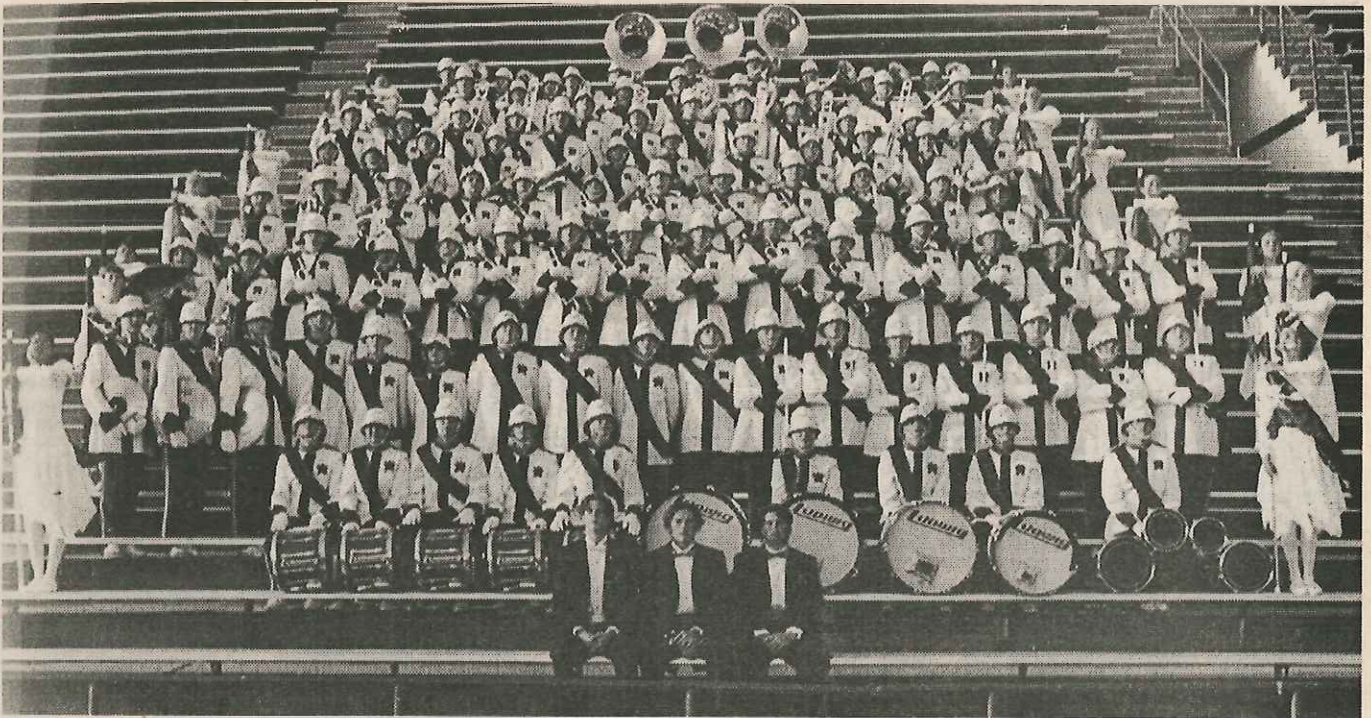
• One or Two Sets of 4" BIG Prints

Coupon must accompany order. Not valid with any other offer.
C-41 process only. Offer expires 10-14-95.



LAUDON DRUG STORE

121 E. Main • Luverne, MN • 283-2137

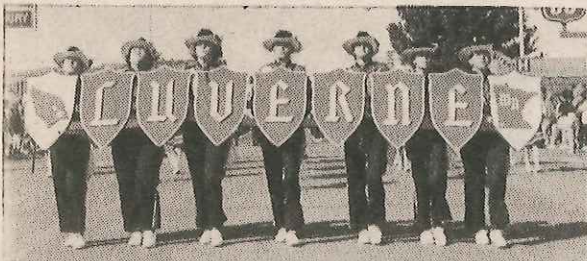


Sioux City, IA

North High School Marching Band will compete in field events in its third appearance at the Tri-State Band Festival. The band is under the direction of Larry Kisor, Brad Mitchell, Mark Lucas and Kirk Lilly. Brad Lemons and Ben Baron are the drum majors. School enrollment is 1,300.

Welcome to Luverne and to the Tri-State Band Festival!

Good luck to all participating bands!



Stop in for Great Country Cookin' and
"Down Home" Hospitality!

6 a.m. to Midnight
7 days
a week

Kids' Menu &
Senior Citizens'
Menu

Call 283-4458
for Take-Out



1-90 & Hwy. 75, Luverne

Best Pancakes in Town!
BREAKFAST ANYTIME
Raney & Jan Israelson, owners

Large Homemade
Cinnamon Rolls

Try Our
New
Southwest
Skillet!

Welcome to the Tri-State Band Festival

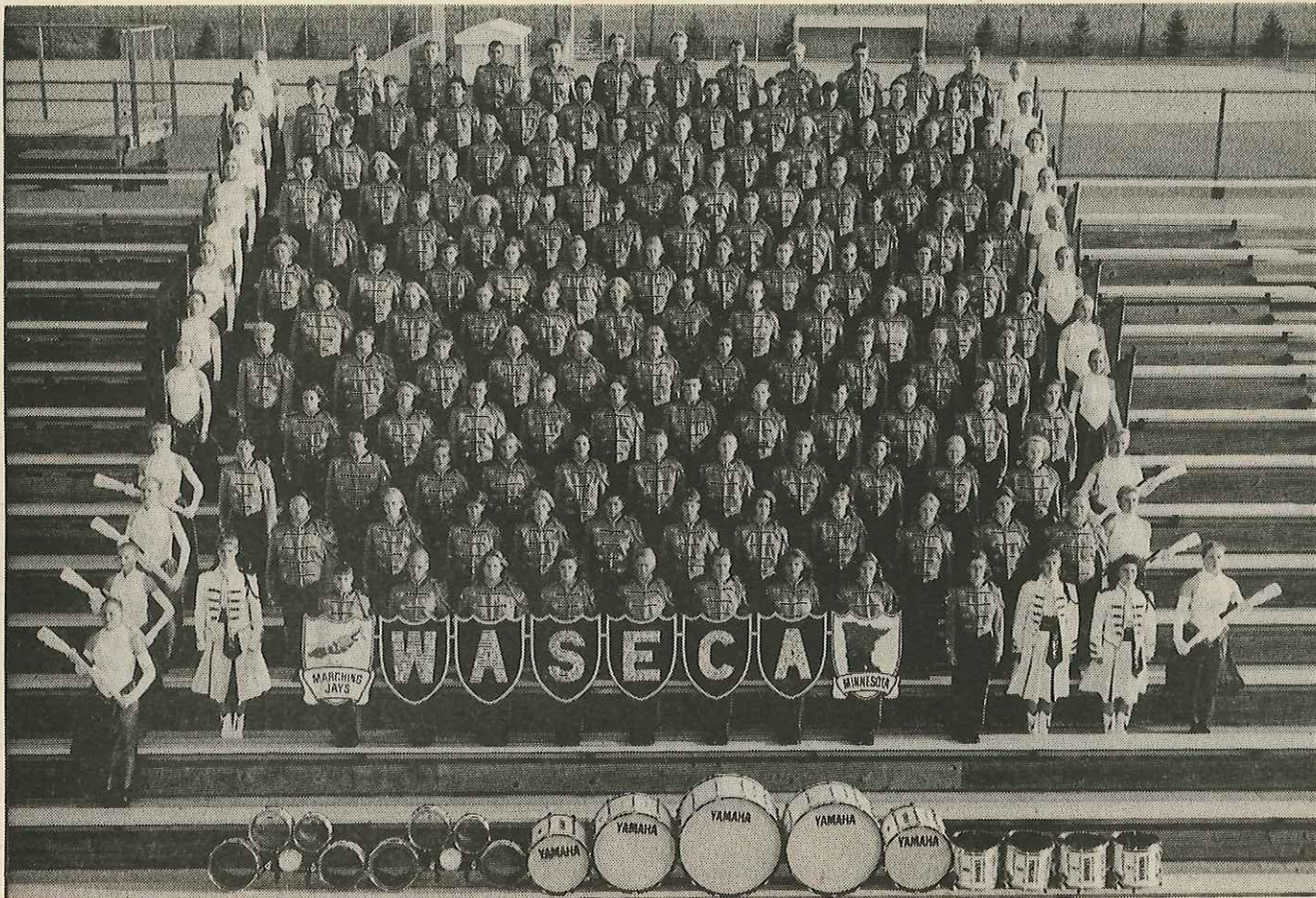
For all your insurance needs see
Dennis McNeil, Jenny Binford & Stacie Remme at

M MINNWEST INVESTMENT
& INSURANCE CENTER

located in the Minnwest Bank Building
Phone 507-283-9586

Custom Floor Covering Sales & Installation JERRY HOFF Floor Covering

311 West Dodge • Luverne, MN 56156
Phone 507-283-4543



Waseca, MN

Waseca High School Marching Jays are under the direction of Kim Cosens and four drum majors, Jana Wessman, Tami Robran, Betsy Senst and Molly Wood. The band has competed more than 20 times in the festival and will compete in both parade and field. Enrollment is 774 students.



*If It's Fuel, Tires or
Lubricants, Call Us!*

Phone 507-283-9116

On-The Farm or At-The-Station

ROCK COUNTY CO-OP OIL CO.

Jim Jellema, manager

South Highway 75 • Luverne, MN • Phone 507-283-9116

WAYNE'S BODY SHOP

We'll Restore Your Car
To Factory
Specifications.



CELETTE

- Auto Glass Installation
- Body Repair & Refinishing
- Classic Car Restoration

310 West Hatting • Luverne, MN • 507-283-8083

Wayne Walgrave, Owner

When attending the Tri-State Band Festival ...Be sure to visit the Blue Mound Inn!

Located only 1 mile north of the Luverne football field on Hwy. 75
- LOTS OF PARKING -

OPEN: Tuesday-Saturday 11 a.m. to 2 p.m.

Evenings: Tuesday-Saturday 4:30 p.m. to 9 p.m.

Sunday: Smorgasbord 11a.m. to 8 p.m.

Monday Noon or Evening for group reservations only!

NOON BUFFET served from 11 a.m. to 2 p.m.

EVENING BUFFET served from 4:30 p.m. to 9 p.m.

Featuring BBQ ribs, turkey & chicken

BLUE MOUND INN

PHONE 507-283-2718

PRIEBE CHIROPRACTIC

114 E. Lincoln (in Jensen Management Bldg.) • Luverne, MN



Dr. Jeff Priebe

Monday - Friday: 8 a.m. - 5 p.m.
Most Saturdays: 9 a.m. - 12 noon
Special hours by appointment.

507-283-9484

MOST INSURANCE ACCEPTED



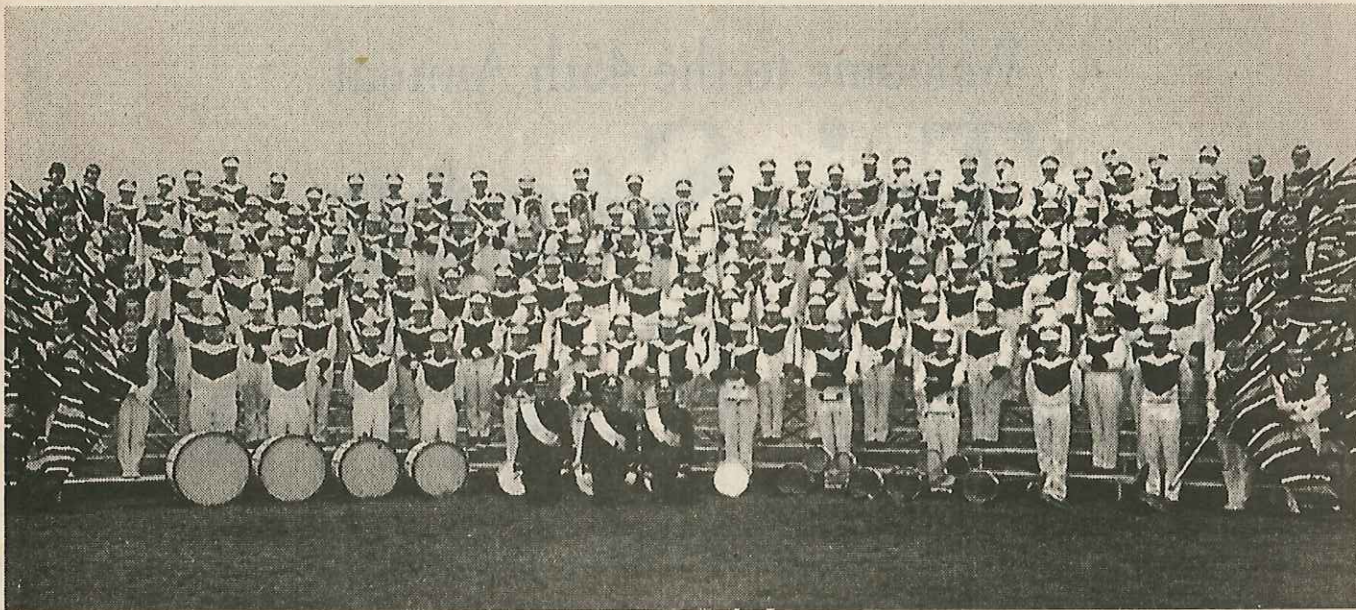
Sioux Center, IA

Sioux Center Community High School has competed in the Tri-State Band Festival every year of its existence. David Silhacek directs the band, and Andrea VanVoorst is drum major. Senior high school enrollment is 336.

THANK YOU EVERYONE

the Bands for participating,
the Spectators for coming to watch
& the Advertisers for supporting
The 45th Annual Tri-State Band Festival!!





Brandon, SD

Brandon Valley High School has had 14 years of experience with the Tri-State Band Festival. Bob Goheen directs the band, and Matt Jensen, Jenni Erpelding and Ryan Tysdal are Commanders. The school's enrollment is 650.



**PREUSS
Chiropractic Center**

Dr. William L. Preuss

Provider for Blue Cross Blue Shield
& other insurance companies

Massage Therapy given by Wilma Van Heerde

103 E. Main • Luverne, MN • Phone 507-283-2561

Good Luck to all the bands at the
Tri-State Band Festival!

HAIR Ltd.

302 East Main • Luverne, Minnesota

Phone 507-283-9519

Open Monday-Thursday 9 a.m. to 8 p.m.

Friday 9 a.m. to 6 p.m.

Saturday 8 a.m. to 3 p.m.

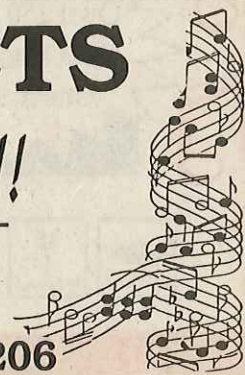
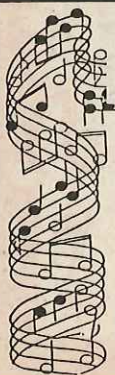
MANITOU CARPETS

Welcomes Tri-State Musicians!!

Manitou Carpets

113 West Main, Luverne

507-283-9206 or MN WATTS 1-800-300-9206



Welcome to the 45th Annual Tri-State Band Festival

While in Luverne, be sure to
stop & see our new facility on
I-90 and just off Hwy. 75

(turn west at Hardees)

1-800-634-7701

507-283-9171

Papik
MOTORS
LUVERNE, MINN.



Over 150 new &
used trucks and
vans in stock.

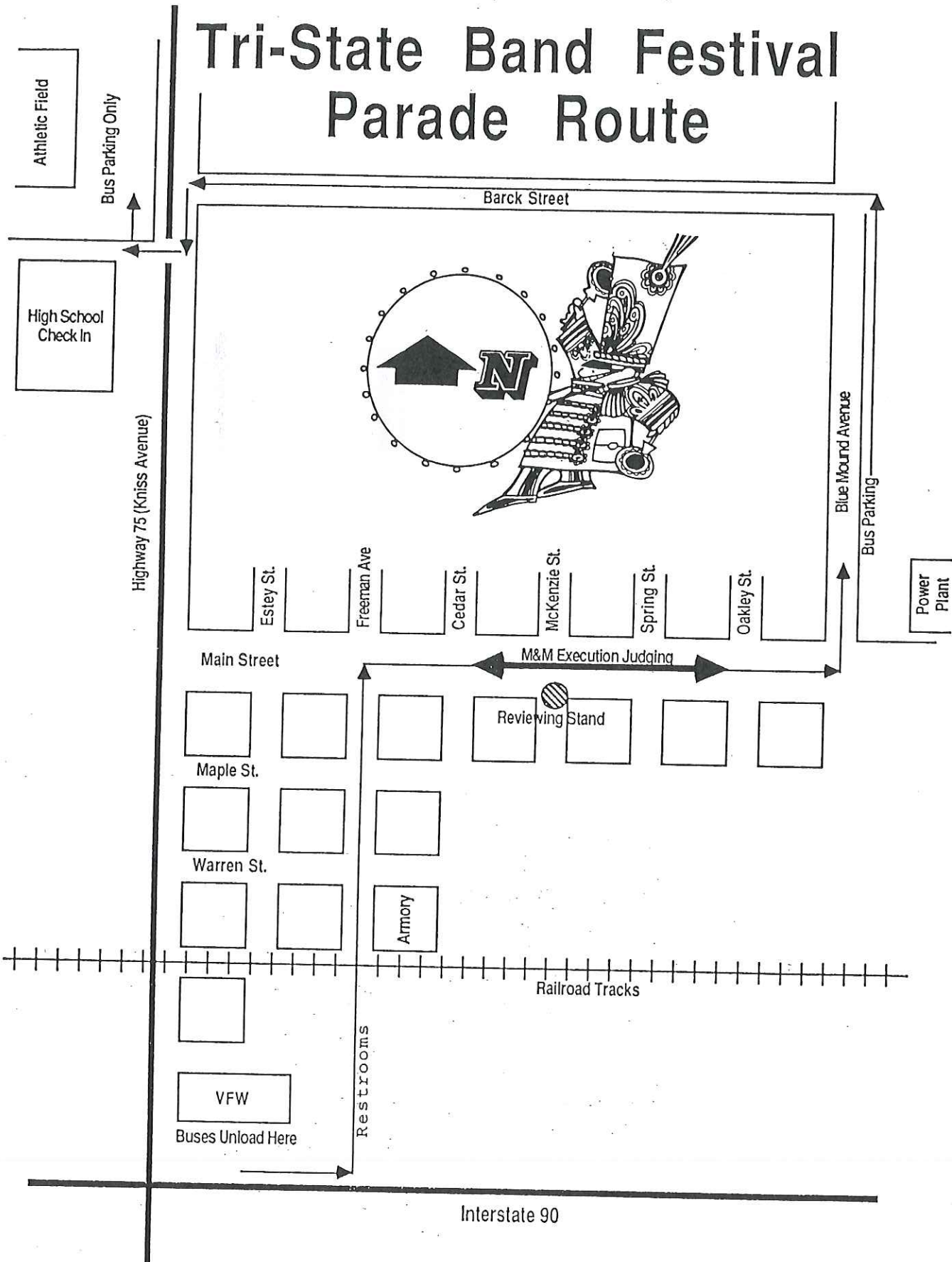
Buy now and
save like never
before!

Low-rate GMAC
Chrysler credit and
bank financing
available.



**"Doing Business
With A
Handshake"**

Tri-State Band Festival Parade Route





Luverne

AREA CHAMBER OF COMMERCE

102 East Main • Luverne, Minnesota 56156

• **Calendar of Upcoming Events** •

***Music Boosters Carnival**

January 27 from 5 to 9 p.m. in the LHS Gym

***Buffalo Days/Arts in the Park**

June 1-2

***34th Annual Hot Dog Night**

July 18

***Rock County Fair**

August 1-2-3

***Border-to-Border Triathlon**

August 5-6

***46th Annual Tri-State Band Festival**

September 28

• **Special Attractions** •

*Rock County Indoor Pool & Fitness Center

*Blue Mound Ice Arena

*Palace Theatre & Museum

*Holy Trinity Church

*Rock County Courthouse

*Hinkly House Museum

*Rock County Community Library

*Carnegie Cultural Center

*Luverne City Park

*Schoneman Park

*Blue Mounds State Park

*Historic Walking Tour

*Maplewood Chapel

For more information, please contact:

Luverne Area Chamber of Commerce

102 East Main • Luverne, MN 56156 • 507-283-4061

