



Lu**verne**
MINNESOTA
Love the life!

Exchange

STATE BANK

Local. Dependable. Strong.

THREE LOCATIONS
to serve all your banking needs!

Hills
116 County Rd 6
507-962-3250

Ellsworth
210 South Broadway St.
507-967-2570

Luverne
310 Gabrielson Road
507-449-6000

Visit our website at:
www.exchangestatebankmn.com



Member FDIC



Local. Dependable. Strong.

Hills • Ellsworth • Luverne
www.exchangestatebankmn.com



Welcome. to Luverne, Minnesota and the 64th Annual Tri-State Band Festival!

Welcome to Luverne, Minnesota and the 64th Annual Tri-State Band Festival!

The Tri-State Band Festival Committee is honored to welcome you to our "hometown" as we celebrate 64 years of high school marching competition.

The standards of excellence that mark this festival are the results of strong partnerships with the Band Festival Committee, City of Luverne, Luverne Public School, Luverne Area Chamber, Rock County, Business Community and Citizens.

The thousands of hours of work and preparation that go into this event are the keystone of Tri-State's success. It takes a community to make an event a great experience for 2,500 high school band students, directors and the public.

The Tri-State Band Festival Committee remains true to the original purpose of this festival. Sixty-four years ago, a group of passionate citizens pledged to create a marching and field competition that would be a educational experience for student musicians. We are proud to carry out this tradition through the hard work and dedication of everyone in the Luverne community.

*Let the drums roll...
let the trumpets sound...
let the flags fly...
and strike up the bands...*

FOR THE 64th ANNUAL TRI-STATE BAND FESTIVAL September 27, 2014!

TRI-STATE BAND FESTIVAL COMMITTEE:



Row 1 (L to R): Karen Roberts, Nancy Scheidt, Richard Owen
Row 2: Marla Van Dyk, Susan Schneekloth, Cheryl Hartman
Row 3: Gavin Folkestad, Randy Schneekloth
Row 4: Laurie Ketterling, Evan Verbrugge
Row 5: Sharla Reisch, Marc Boelman
Row 6: Jody Reisch, Derek Boeve
Row 7: Eric Hartman

Missing from photo: Robin Folkers, Keith Graber, Seana Graber, Ashley Kurtz, Dale Nelson, Dave Nelson, Marilyn Van Grootheest

Staff at the Luverne Area Chamber:
Lorna Bryan & Jane Wildung Lanphere

**CLASS A-1:**

1st & 2nd Place
Trophies in the
parade competition

CLASS A:

1st Place Trophy in
parade and 1st & 2nd
Place Trophies in the
field competition

CLASS AA:

1st & 2nd Place
Trophies in the
parade & field
competition

CLASS AAA:

1st & 2nd Place
Trophies in the
parade & field
competition

CLASS AAAA:

1st Place Trophy in
parade and 1st & 2nd
Place Trophies in the
field competition

**SPECIAL TROPHY
AWARDS:**

OVERALL

**PARADE & FIELD
SWEEPSTAKES:**

representing the
highest score
combined in field
and parade in
all the divisions

*The 2014 Tri-State Band Festival is honored to award
trophies to the outstanding bands you have witnessed today*



Each band in the 2014 Tri-State Band Festival competition are true champions as they demonstrate the hard work and dedication that they put into the development of their marching and field performance. The Committee and the citizens of the community congratulate each and every high school band for sharing their "best" with us today. The Festival is honored to present each participating band with a custom-made "PARTICIPATION AWARD" for sharing their talents with us today!

5th Annual TRI-STATE BAND FESTIVAL & BIG SIOUX REVIEW JOINT TROPHY

Presented to the high school marching
band with the highest combined scores
of the Tri-State Band Festival and the
Big Sioux Review!

**"STAR OF THE
GREAT PLAINS"**



**SPECIAL TROPHIES
WILL BE
PRESENTED IN
CLASSES A, AA,
AAA, & AAAA IN
THE CATEGORY
OF FIELD
PERFORMANCE:**

**OUTSTANDING
AUXILIARY:**

representing
outstanding auxiliary
performance as
determined by the
total score of the
color guard/auxiliary
ballots

**OUTSTANDING
PERCUSSION:**

representing
outstanding percus-
sion performance in
each division as
selected by the
percussion execution
and analysis ballot

**OUTSTANDING
WINDS:** determined
by the total score of
the music execution
ballot

**OUTSTANDING
DRUM MAJOR:**

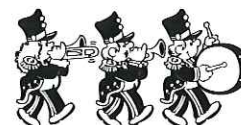
selected by the
music general effect
judge based on
conducting and
leadership skills,
musicality, and the
content/demand of
the music performed

K. M. GETMAN ORIGINATORS AWARD:

This award is presented to the band who has demonstrated throughout their participation in the Tri-State Band Festival: *pride, spirit, enthusiasm, friendliness and unity*. The Getman award, judged by the members of the Tri-State Band Festival Committee, represents the grand history of this festival that was created in 1951. Dr. Ken Getman and the other originators of this festival worked to create an annual event that would enhance high school band performance by sharing ideas, innovations, and education through competition. The high standards laid down in 1951 to further band music performance in the tri-state region remain the focus of the Band Festival Committee today. This prestigious award is given in honor and in dedication to these grand principles of excellence.



TABLE OF CONTENTS



HIGH SCHOOL	CLASS	PAGE
Adrian	A-1	15
Beresford.....	A-1	16
Boyden-Hull	A-1	17
Brandon Valley.....	AAAA	33
Brookings	AAA	29
Garretson	A-1	18
Harrisburg	AAA	30
Lennox.....	AA	21
Luverne High School.....	HOST.....	10
Luverne Middle School	HOST.....	7
Madison	AA	24
Murray County Central.....	A-1	19
O'Gorman - Sioux Falls, SD	AAA	31
Pipestone	AA	25
Roosevelt - Sioux Falls, SD	AAAA	34
Sibley-Ocheyedan	A	13
Sioux City East	AAAA	35
Stewartville.....	AA	26
Tea	AA	27
Tracy	A-1	20
West Central - Hartford, SD	AA	28
West Lyon.....	A	14
Worthington	AAA	32
<hr/>		
Luverne City Map.....		42
Parade & Field Schedule.....		22&23
Parade Marshals.....		6
Band Photos from the Past.....		38&39



2014 Tri-State Band Festival Parade Marshals - Luverne Public Works Department

The Tri-State Band Festival Committee is honored to announce the 2014 Parade Marshals – Luverne Public Works Director John Stoffel and Staff of the Public Works Department.

The Luverne Public Works Department has long been an important part of the planning and execution of the Tri-State Band Festival. This department of dedicated individuals works very hard during Festival week to put together the pieces to allow us to stage and coordinate the parade.

This year, the Committee selected these individuals not only for their support of Tri-State but for the outstanding work they have done during this past year with the challenging disaster of this early spring.

Through the support of the Luverne City Council and coordination of City Administration, this department spent countless hours of hard work to make many of our community's special events possible.

The June flood of 2014 led devastation to many places in the community, none more public than the complete destruction of the grounds of Redbird Field and Luverne City Park.

The Luverne Baseball Association had been working diligently over the past four years in preparation of hosting the 2014 American Legion State Baseball Tournament, anticipating hosting approximately 1,500 teams and fans. When the waters finally receded, it looked like it would have been impossible to clean and sanitize the grounds and repair the turf.

Our heroes at Luverne Public Works stepped in to make the impossible happen! John and his staff spent countless work hours and overtime



Front row (L to R): Bob Desplinter, Cory Schmuck, Dave VanBatavia, Eric Lammert, Dustin Smeins, John Stoffel and Landon Gacke. Back row (L to R): Robin Stratton, Butch Hatting, Tim Anderson, Frank Mongold and Greg McClure. Not pictured: Dan Serie and Rich Deschepper.

rebuilding, reconstructing and repairing Redbird Field. In less than 30 days, they made it possible for Luverne to welcome the Legion Tournament fans to a state-of-the-art baseball field that was in top shape for this state competition.

This example represents the outstanding work Luverne Public Works does, not only in times of disaster, but in the course of every work day. Our community takes pride in the way our streets, sidewalks and public infrastructure is cared for and maintained. We are proud that our town always looks like we are "ready for company." This great group of individuals deserves this special acknowledgment of "jobs always...well done and exceeding expectation."

Congratulations to LUVERNE PUBLIC WORKS – Tri-State Band Festival's 2014 Parade Marshals!

JOHN STOFFEL – DEPARTMENT HEAD

Timothy Anderson
Richard Deschepper
Robert DeSplinter
Landon Gacke
Clem Hatting
Brady Hudson
Eric Lammert
Gregory McClure
Frank Mongold
Cory Schmuck
Daniel Serie
Dustin Smeins
Robin Stratton
David Van Batavia



LUVERNE MIDDLE SCHOOL MARCHING BAND

The Luverne Middle School band, under the direction of Richard Owen has 44 members in grades 7 and 8. They have been participating in the Luverne Tri-State Band Festival since 1980. We are proud and honored to act as hosts for the Tri-State Band Festival again this year.

DIRECTOR: Richard Owen

SCHOOL ENROLLMENT: 360

PARADE MUSIC: Luverne School Song

BAND MEMBERS: 52

Luverne School District Welcomes You!!!

The Luverne Public Schools... students, teachers and administrators...would like to welcome you to the 64th Annual Tri-State Band Festival, our community and our school.

The Luverne Public School is a reflection of our community's continued efforts to provide our students with quality educational opportunities and excellent scholastic facilities. We strive to challenge our students to grow and develop into adults who will be ready for the opportunities that life brings to each of us. We feel that education needs to prepare youth for post-secondary education, military service, community service and the

world of work. Our staff members, our parents and our students are second to none. Without their commitment and the support of the community – we would not be able to boast about the success of our students and our educational programs. Our graduates continue to support our school through the Luverne Education Foundation and our local Dollars for Scholars program.

Each year the Luverne Public School looks forward to working with the Tri-State Band Festival Committee to help put together a remarkable day of music and marching. We thank the members of the Tri-State Band Festival Committee and

the Luverne community for making this day possible. As you experience this 64th Annual Tri-State Band Festival...we hope that you enjoy these performances as much as we do! May all of the band students and directors leave this experience with a feeling of success!

Gary L. Fisher
Superintendent
Luverne Public Schools





Glen's Food Center

205 E Warren • Luverne, MN

Monday - Saturday 7 AM - 10 PM

Sunday 7 AM - 9 PM

283-4429

Check us out at www.glens-food.com

Locally owned & operated



Your Full Service Supermarket
LOW PRICES, GREAT SPECIALS, FRIENDLY SERVICE



BLUE MOUND BANQUET & MEETING CENTER

401 W. Hatting Street • Luverne, MN

449-1122

"Where people meet for a good time"



Glen's Food & Gas

818 N. Kniss Ave. • Luverne, MN

283-4889

Open 7 Days a Week - 24 Hour Pumps



449-0335
**GODFATHER'S
DELIVERY
AVAILABLE**



Monday - Thursday
& Sunday 6 AM - 9 PM
Friday 6 AM - 10 PM
Saturday 6 AM - 10 PM



Bring your
Tri-State booklet to
Glen's Food & Gas
and receive 5¢ off
per gallon of gas!

Deli • Gourmet Coffee • Pizza • Convenience Store



The one spot.



Good Luck Participants of the
Tri-State Band Festival. Visit us afterwards!
McDonald's I-90 and Hwy. 75
Luverne, MN

© 2011 McDonald's. At participating McDonald's.

The Estenson Company, Inc.

Independent Insurance Agent

Lisa Diekmann



419 E. Main, P.O. Box 868 FAX: 507-283-8405
Luverne, MN 56156 Toll Free: 866-753-8426
507-283-2386 Res: 507-472-8283
MN LIC. #32554

Good Luck to all
Tri-State Band Festival Participants!



Luverne • Pipestone • Lake Benton • Tyler

www.HartquistFuneral.com

**Your Hometown Farm
and Home Discount Store
Supports the
Tri-State Band Festival.**

321 W. Hatting, Luverne, MN
507-283-2075

STORE HOURS:
Mon.-Fri. 8 a.m. to 7 p.m.;
Sat. 8 a.m. to 6 p.m.
Sun. Noon to 5 p.m.

bomgaars
What You Need... When You Need It

www.jaycoximplement.com
www.jaycoxpowersports.com

JAYCOX
IMPLEMENT, INC.

Luverne, MN • 1-507-283-2319
Worthington, MN • 1-507-376-3147
Lake Park, IA • 1-712-832-3151

CASE II DIESEL TRUCK
AGRICULTURE SERVICE & PARTS

**LUVERNE
MUSIC BOOSTERS**

invite you to eat at the
BANDSTAND

- Walking Tacos
- Pizza
- Hamburgers
- Hot Dogs • Drinks
- Meal Deals • Candy
- Homemade Bars & More!

**Located
at the
High School
tent &
brick
concession
stand!**

**ALL PROCEEDS TO BENEFIT
BAND AND CHOIR STUDENTS!**

Please lend your Support!



LUVERNE HIGH SCHOOL MARCHING BAND

DIRECTOR:

Richard Owen

ASSISTANT DIRECTORS:

Gavin Folkestad - Color Guard/ Visual
 Julie Fettes - Colorguard
 Bryan Maurer - Percussion

DRUM MAJORS:

Spencer Schacht
 Mitchell Graber
 Sam Ykema

COLOR GUARD**LEADERS:**

Danielle Kneip
 Madison Stearns

SOLOISTS:

Connor Crabtree
 Oscar Holmberg

PERCUSSION**LEADERS:**

Drew Weis
 Emma Verbrugge

MUSICAL SELECTION:

PARADE NUMBER: "BRAVEHEART – Freedom!" by James Horner
 and arranged by Jeremy Hegg

AWARDS AND ACCOMPLISHMENTS:

2nd place, King Turkey Day
 1st place, Waseca 2013
 2nd place, Big Sioux Review
 Outstanding Colorguard, Big Sioux Review
 Outstanding Percussion, Dutchmen Field Championship

FIELD PERFORMANCE: "BRAVEHEART"

The musical selections include: Introduction, Dance, The Princess, and Freedom! Featuring Scottish elements throughout, watch for items such as bagpipes, the blue and white Scottish flag, and even an Irish Jig!

SCHOOL ENROLLMENT: 360**BAND MEMBERS:** 65

National Anthem



The Tri-State Band Festival Committee is honored to have the Luverne High School Cardinal Marching Band open the 2014 Field Competition with their performance of our National Anthem.

The Luverne High School Marching Band is under the direction of Richard Owen. This wonderful group of high

school band students...support, perform, and participate in all aspects of the Tri-State Band Festival as Host Band.

We thank them for their performance as we salute and pay respect to our nation!

*We thank them for their
 salute to our nation!*



LUVERNE MARCHING BAND

GOOD LUCK IN YOUR 2014 MARCHING BAND COMPETITIONS!

BEAVER CREEK MUTUAL INSURANCE

BUFFALO RIDGE INSURANCE

CATTNACH INSURANCE COMPANY

CONNELL CAR CARE

HEIDEBRINK & ASSOCIATES AGENCY

JENSEN MANAGEMENT SERVICE INC.

KETTERLING SERVICES, INC.

KQAD-AM/KLQL-FM RADIO

LUVERNE ACE HARDWARE

ROCK COUNTY CHIROPRACTIC

SUDENGA COMMUNICATIONS

THOSE BLASTED THINGS

VAN AARTSEN CONSTRUCTION

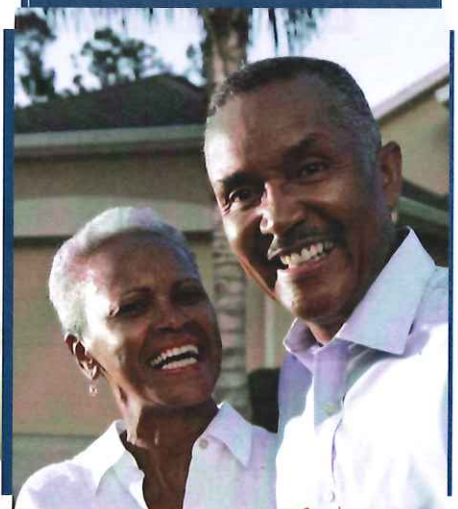
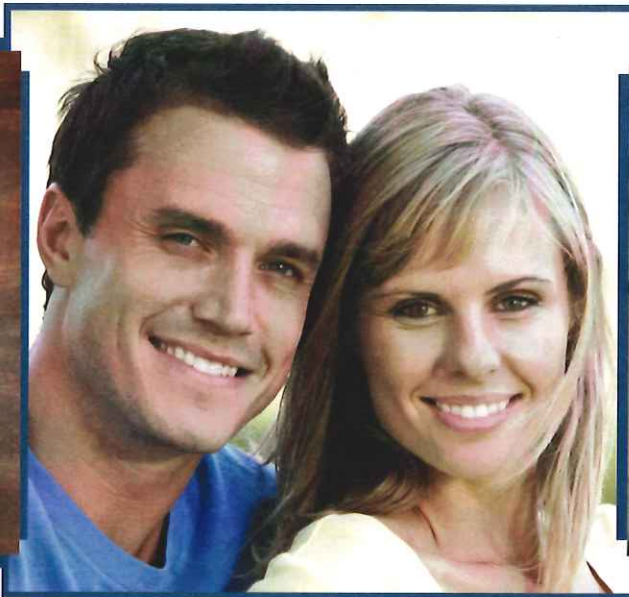
W & N CONSTRUCTION





MINNWEST BANK®

Minnwest Bank is committed to the Tri-State Community



Offering superior products, three locations, weekend and evening hours all at your convenience!

800 S Kniss Ave
Luverne
(507) 283-9131

116 E Main St
Luverne
(507) 283-2366

304 E 1st Ave
Beaver Creek
(507) 673-2334

MEMBER
FDIC





SIBLEY-OCHEYEDAN MARCHING GENERALS BAND

DIRECTOR:

Peter Carlson

PERCUSSION

LEADER:

Jada Carlson

Alec Hoppe

Maddie Lonneman

Erin Swenson

Ellie Klaassen

DRUM MAJORS:

Sarah Honken

Ellie Klaassen

Marissa Pham

SOLOIST:

Frances Wiese, Soprano Sax

Marissa Pham, Baritone

Sarah Honken, Horn

Katelyn Johnson, Sara Egging
and Brenden Pham, Guard

COLOR GUARD

LEADERS:

Sara Eggink

Brenden Pham

ASSISTANT DIRECTORS:

Kelly Jacobsma

SCHOOL ENROLLMENT: 234

BAND MEMBERS: 80

MUSICAL SELECTION:

PARADE MUSIC: "September". Music from Earth, Wind & Fire
and arranged by Am Cox

FIELD MUSIC: "ARABIA" arranged by Peter Connell

I. Arabian Nights

II. Caravan

III. The Grand Bazaar

IV. Schedherazade

AWARDS AND ACCOMPLISHMENTS:

Pursuit of Excellence - 5th Place - Crimson Class Field

Tri-State Band Festival - 1st Place - Class A Field, Outstanding

Winds and Outstanding Drum Majors; 2nd Place - Class A Parade

Big Sioux Review - 1st Place Class AA Field, Outstanding Winds
and Outstanding Drum Majors

Festival of Bands - 2nd Place Class AA - Field, 4th Place - Class
AA Parade

State Marching Festival - 1st Place - Class 2A Field

Dutchmen Field Championships - 2nd Place - Class 2A - Field,

Triple "S" Award

Quad State Marching Competition - 1st Place Class 2A - Field,

Outstanding Winds, Outstanding Percussion, Outstanding Color

Guard, Outstanding Drum Majors

Welcome to the Tri-State Band Festival

Buffet - Delivery - Party Rooms Available

**Serving Buffet (11 a.m. - 8 p.m.)
on Saturday**



110 E. Main · Luverne · 507-283-2379



WEST LYON WILDCAT MARCHING BAND

DIRECTOR:

Drew Balta

BAND MEMBERS: 80**SCHOOL ENROLLMENT:** 229**AWARDS AND ACCOMPLISHMENTS:**

The West Lyon High School Band program offers a comprehensive music education experience that includes the Symphonic Band, the West Lyon "Wildcat" Marching Band, Jazz Band, Percussion Ensembles, and the NOIZ Machine Pep Band. The West Lyon "Wildcat" Band program is strongly represented at the State Solo and Ensemble Contest.

At the state level, the West Lyon "Wildcat" Marching Band has received the states top honor, division one rating in 45 of the past 47 marching seasons. On a national level, the band program has participated in festivals in Florida, Texas and Colorado.

SOLOISTS:

Evan Ver Steeg, Trombone
Torrie Luethold, Trumpet
Amber Klarenbeek in the guard.

DRUM MAJORS:

Marissa Munger
Grace Gilbertson

PERCUSSION**LEADERS:**

Shannan Michelson &
Alecia Martinez (Drumline)
Kenzie Schindler (Concert
Percussion)

COLOR GUARD**LEADERS:**

Brooke Block
Brenden Pham
Sara Eggink

ASSISTANT**DIRECTORS:**

Lynette Wedeking *Associate Band Director*
Joan Huggendoorn *Color Guard Instructor*
Larissa Van Beek *Color Guard Instructor*
Jason Raether *Drumline Instructor*
Miranda Metzger *Drumline Instructor*

FIELD MUSIC: "TO CATCH A THIEF" By: Gary Gilroy.

1. The Heist
2. Jewels by Moonlight
3. Entrapment/ The Slip

Our opening number "The Heist" begins with the thief "Noah Blankenspoor" stealing the grand saxophone and finding his hiding place within the band. Solists are Torrie Luethold and Grace Rens on Trumpet. We then continue with a gorgeous ballad entitled "Jewels by Moonlight", where our thief finds true love. Our show concludes with the thrilling movement entitled "Entrapment, The Slip". Watch to see how our story concludes.

Welcome Tri-State Band Participants & Parents

Have your parade pictures developed
between the street & field competitions.

DIGITAL PRINTS

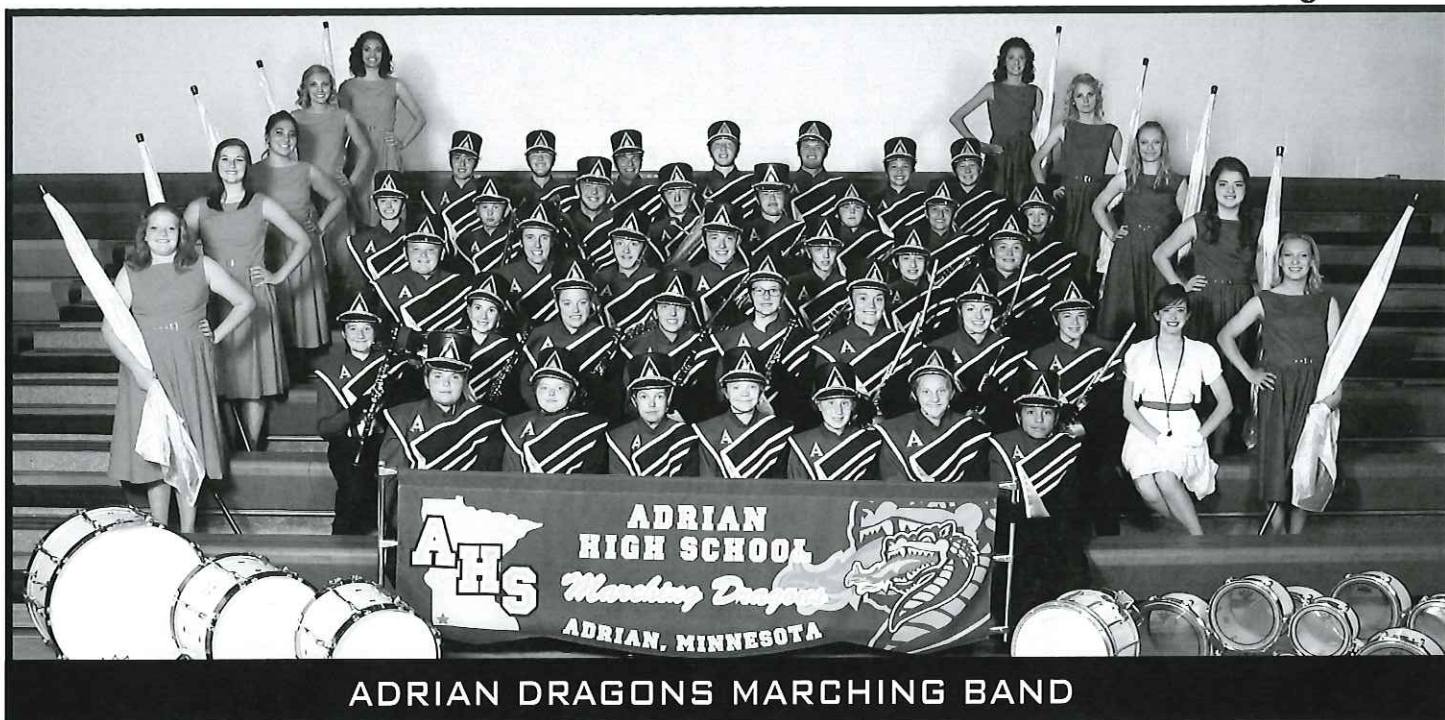
19¢ ea. 4x6"
1-99 prints

15¢ ea.
100+ prints



@Lewis
Family Drug

202 S. Kniss Ave. • Luverne, MN • 507-283-9549 | Store Hours M-F: 8am-7pm / Sat: 9am-5pm / Sun: 9am-1pm



ADRIAN DRAGONS MARCHING BAND

DIRECTOR:
Erika Bierman

ASSISTANT DIRECTORS:
Sarah Jensen, Drumline
Kristyne Walth, Colorguard

DRUM MAJORS:
Justice Redding

SCHOOL ENROLLMENT: 200
BAND MEMBERS: 55



MUSICAL SELECTION
PARADE NUMBER:

"West Side Story" by Leonard Bernstein and arranged by Dawson. This arrangement includes excerpts from "Tonight" and "America" from Leonard Bernstein's timeless Broadway musical, "West Side Story".

AWARDS AND ACCOMPLISHMENTS:

2014 performances include Minnesota State Fair on August 30; Worthington Turkey Day Parade on September 13; Tri-State Band Festival on September 27; Sioux Falls Festival of Bands on October 4th and the Adrian Marching Band Indoor Concert on October 14th.

**Good Luck To All
Band Festival Participants!**

Keith's Grocery & Bake Shoppe

219 Maine Ave., Adrian, MN

507-483-2959

Hours: Mon.-Sat. 8 a.m. to 8 p.m.; Sun. 8 a.m. to 1 p.m.

Good Luck

Adrian Dragons Marching Band
in Tri-State Band Competition!

Celebrating
125
years



Adrian State Bank

P.O. Box 129 322 Maine Avenue
Adrian, Minnesota 56110
507-483-2447

Member FDIC





BERESFORD MARCHING WATCHDOGS MARCHING BAND

DIRECTORS:
Brian LeMaster

**ASSISTANT
DIRECTOR:**
Mike Jones

**PERCUSSION
LEADER:**
Berk Ehrmantraut
Molly McInnis
Taylor Watkins

DRUM MAJORS:
Maddie Antonson
Hannah Hepner

**COLOR GUARD
LEADER:**
Tiffany Hoffman
Bailey Nelson

**SCHOOL
ENROLLMENT:** 191

BAND MEMBERS: 75

AWARDS AND ACCOMPLISHMENTS:

The Beresford Marching Band will be competing this year in Platte, SD, Chester, SD, Sioux Falls, and Volga, SD. In April of 2015 the band will be traveling to Norfolk, Virginia to take part in the NATO Parade of Nations. While there, the band will attend the Virginia International Tattoo where they will see military musical units perform from all across the world.

MUSICAL SELECTION:

PARADE MUSIC: The album "Thriller" by Jay Bocook was released by Michael Jackson in 1982 and has sold more copies than any other album in history. The video "Thriller" was the first video of it's kind to be shown on MTV. Never before had any musical artist combined theater with music in a video. Thriller remains the most watched video of all time.

Since 1948

LUVERNE FARM STORE

Quality & Service

Lawn Care

We take pride in your lawn
as if it was our own.

Good Luck to all marching band participants ~ from the Golla Family



BOYDEN-HULL COMET MARCHING BAND

DIRECTOR:
Virginia Eulberg

DRUM MAJOR:
Tyrone Fude

**PERCUSSION
LEADERS:**
Nolan Meerdink

**COLOR
GUARD:**
Carmen Garcia

SCHOOL ENROLLMENT: 180
NUMBER IN BAND: 25

PARADE MUSIC:

"Know Your Enemy". Music by Green Day and arranged by Mike Story. "Know Your Enemy" is the first single from Green Day's album *21st Century Breakdown*. Green Day had one of its biggest hits with this infectious rock anthem.

AWARDS AND ACCOMPLISHMENTS:

The Boyden-Hull Comet Marching Band has participated in Luverne's Tri-State Band Festival for many years. The band performs at the home football games and the Festival of Bands in Sioux Falls, SD.



JIM REMME

1601 S. Kniss • PO Box 595 • Luverne, MN 56156
Office: 507-283-2529 Fax: 507-283-9052

CONCRETE CREATIONS

of Minnesota LLC.

All types of Concrete Flat Work

Jason DeBeer

(507) 227-8759 or (507) 283-3861

*Where experienced craftsmen
produce work with pride!*

Country Cupboards

2 miles south of Luverne, MN on Highway 75

507-283-8176

**Receiving proceeds from
selling your farm?**



Cary K Schroeder
Financial Advisor

101 East Main
Luverne, MN 56156
507-283-4469
www.edwardjones.com

Edward Jones
MAKING SENSE OF INVESTING

Member SIPC



GARRETSON BLUE DRAGONS MARCHING BAND

DIRECTOR:
Nick Sittig

**COLOR GUARD
LEADER:**
Amyah Ockenga

DRUM MAJOR:
Keara Beck

**PERCUSSION
LEADER:**
Jacob Liester

PARADE MUSIC TITLE:

"You're a Grand Ol' Flag & American" arranged by Mike Story. A small medley of a patriotic song.

SCHOOL ENROLLMENT: 150
BAND MEMBERS: 53

We Buy Corn.



AGRI-ENERGY, LLC  **gevo™**

For Current Prices Call:

507-283-9518

or Toll Free at:

1-877-333-CORN



502 South Walnut, Luverne, MN 56156

Visit our websites
www.agrienergy.com
www.gevo.com

Proud to support
the Garretson
Blue Dragons
in academic and
athletic excellence!



644 N MAIN AVENUE GARRETSON
800.942.3423 WWW.BANKEASY.COM

Member
FDIC



MURRAY COUNTY CENTRAL MARCHING BAND

DIRECTOR:
Michael Helgeson

**PERCUSSION
LEADERS:**
Nick Dahlhoff

**COLOR GUARD
LEADERS:**
Jordan Schmidt
Abby Tauer

DRUM MAJORS:
Marina Kremer

ASSISTANT DIRECTORS:
Katie Gillette, Colorguard
Janese Seidschlag - Colorguard

AWARDS & ACCOMPLISHMENTS:
2010 – 1st place at Tri-State and 2nd at Festival of Bands
2011 – 2nd place at Tri-State and 3rd at Festival of Bands
2012 – 3rd place at Tri-State and 2nd at Festival of Bands
2013 – 2nd place at Tri-State. We also traveled to New York in June and performing at University of Wisconsin in La Crosse and the Intrepid Museum in NYC.

SCHOOL ENROLLMENT: 225
BAND MEMBERS: 85

MUSICAL SELECTION:
PARADE MUSIC:

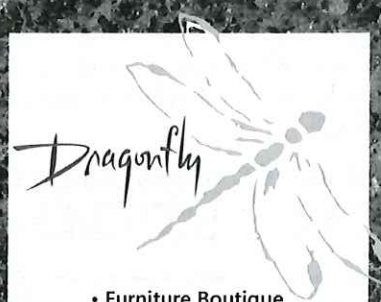
“Captain America March” by Alan Silvestri and arranged by Paul Murtha. Bold, contrasting themes, fanfares and rhythmic drive make this march from the 2011 blockbuster action film Captain America: The First Avenger an exciting and distinctive parade number!



**Gene Cragoe • Scott Adams
& Staff**

203 East Main • Luverne, MN 56156
507-283-2647 • 800-689-2647
www.cragoe.com • info@cragoe.com


GOOD LUCK TO ALL PARTICIPATING BANDS!!

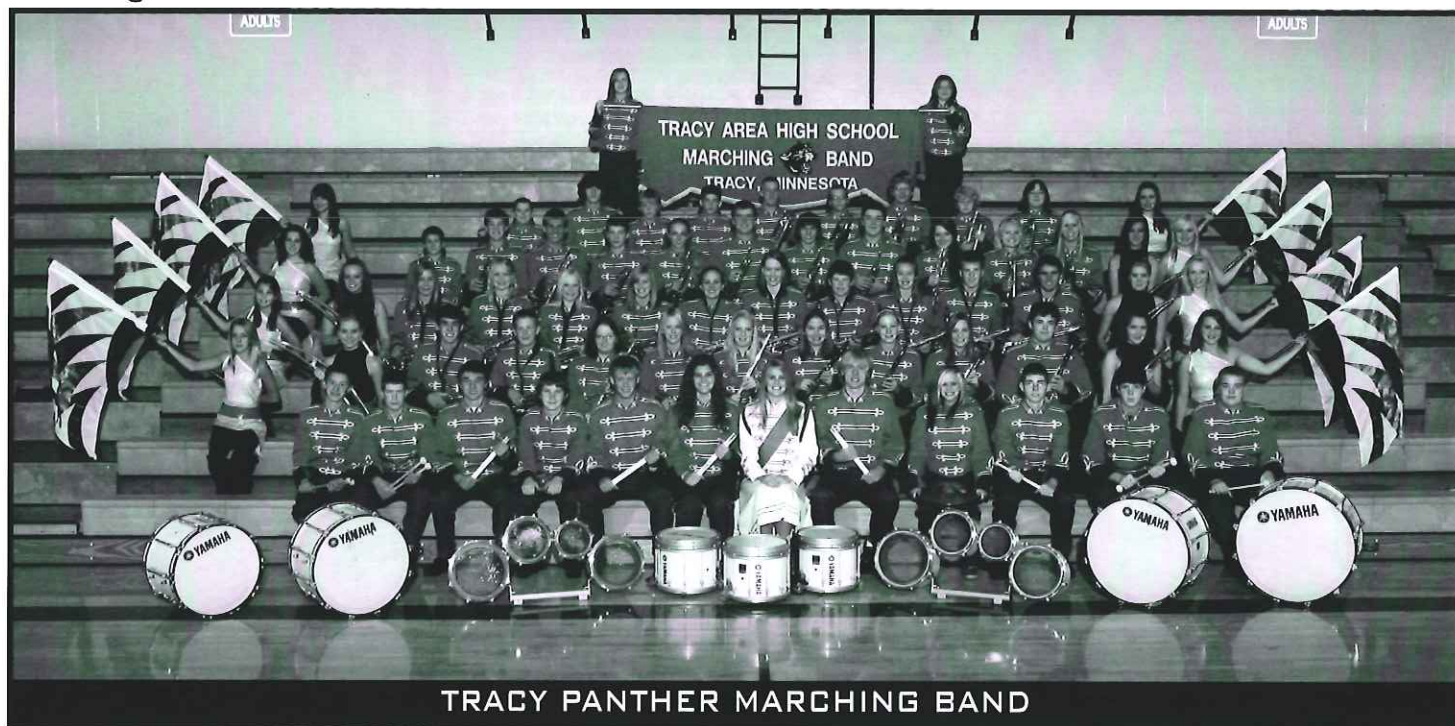


- Furniture Boutique
- Lighting
- Home Decor

Stacy Riphagen
Owner/Interior Designer

206 East Main Street
Luverne, MN 56156
507-449-2060
luvernedragonfly@gmail.com

Like us! 



DIRECTOR:
Chris Miller

ASSISTANT DIRECTOR:
Katyln LeClaire
Katie Olafson, Flag Corps

DRUM MAJORS:
Cassandra Hood
Anna Peterson

PERCUSSION LEADERS:
Samantha Gervais

COLOR GUARD LEADERS:
Kaarlie Mayer

MUSICAL SELECTION:

PARADE MUSIC: "Applause" by Stefani Germanotta and arranged by Michael Brown. Lady Gaga keeps spinning out the hits with "Applause".

SCHOOL ENROLLMENT: 240

BAND MEMBERS: 72



Luverne Country Club



www.luvernecountryclub.com

Located east of Luverne. Take Hwy. 16 east to Cty. Rd 9 south, turn on first left. Clubhouse is located on right side.

Golf Carts & Driving Range Available

CALL 507-283-4383
for tee times



www.mainstreetfinancial.net

MainStreet financial services

212 East Main Street
P.O. Box 716
Luverne, MN 56156
(507) 283-9590
(507) 283-2660 fax
(800) 260-1014 toll free

- Retirement planning • Professional money management
- Long term care • Estate planning

INVEST Financial Corporation, member FINRA/SIPC, and its affiliated insurance agencies offer securities, advisory services and certain insurance products and are not affiliated with MainStreet Financial Services, Inc.

CHS®





LENNOX ORIOLE PRIDE MARCHING BAND

DIRECTOR:
Tyler Nettetstad

ASSISTANT DIRECTORS:
Sara Bakken, Assistant Director
Tyler Klussman, Percussion
Alaina Meyer, Colorguard

DRUM MAJOR:
August Meyer
Delane Hood

**PERCUSSION
LEADER:**
Jordan Wittrock

SOLOISTS:
Traesha West
Taylor Smidt
Catlynn Lee
Austin Odland
Brianna Homelvig

AWARDS AND ACCOMPLISHMENTS:

1st Place Parade and Field at Waseca Marching Classic in Waseca, MN
1st Place Parade and 2nd Place Field at Tri-State Festival in Luverne, MN and Outstanding Percussion Award
3rd Place Field at Big Sioux Review in Brandon, SD and Outstanding Percussion Award
2nd Place Parade at Festival of Bands in Sioux Falls, SD
3rd Place Field at Dutchmen Field Championships in Orange City, IA and Outstanding Hornline

MUSICAL SELECTION:

PARADE MUSIC: "Ode to Joy". Music by Beethoven and arranged by Diischer
FIELD MUSIC: "Into the Joy of Spring." The show is a take on the Anne Bradstreet quote: "If we had no winter, the spring would not be so pleasant." It is set in four parts: Winter, The Blizzard, The Rebirth, and Spring's Joy. The two opening movements depict the brutally cold and harsh blizzards of winter. The change of the seasons is apparent during the rebirth as spring rains and thunderstorms move in. Finally, the last movement evokes emotions of pure joy and bliss with the onset of abundant sunshine. Music includes works by Gustav Mahler, Ludwig Van Beethoven, Tyler Nettetstad, and Mark Diischer.

SCHOOL ENROLLMENT: 285

BAND MEMBERS: 59

Welcome to Luverne

from the office of

**Klosterbuer
& Haubrich, LLP**

120 N. McKenzie, Luverne, MN

507-283-9111



**Body Shop
Auto Glass**

507-283-8711



Finals Score Sheet



PARADE WINNERS

Class A-1

1st Place _____

2nd Place _____

Class A

1st Place _____

Class AA

1st Place _____

2nd Place _____

Class AAA

1st Place _____

2nd Place _____

Class AAAA

1st Place _____

FIELD WINNERS

Class A

1st Place _____

2nd Place _____

Class AA

1st Place _____

2nd Place _____

Class AAA

1st Place _____

2nd Place _____

Class AAAA

1st Place _____

2nd Place _____

SWEEPSTAKES TROPHY

OVERALL _____

K.M. GETMAN AWARD

AUXILIARY AWARDS

OUTSTANDING	Class A	Class AA	Class AAA	Class AAAA
Drum Major _____				
Percussion _____				
Winds _____				
Auxiliary _____				

PARADE ORDER

VFW & Legion Color Guard

Parade Marshals (Luverne
Public Works Department)

Luverne Middle SchoolHOST

Sibley-Ocheyedan A

Murray County Central ... A-1

Beresford A-1

Tracy A-1

Boyden-Hull A-1

Garretson A-1

Adrian A-1

Stewartville AA

Tea AA

Lennox AA

Pipestone AA

West Central AA

Brookings AAA

Worthington AAA

Brandon Valley AAAA

Luverne High School ... HOST

**Here's to a *STRONG* performance
by *ALL* participants!**

Great North Region
Ten Roundwind Road
Luverne, Minnesota 56156
800.533.0303 | www.CWGins.com



CWGSM
a W. R. Berkley Company



PARADE TIME: 9:30 AM MAIN STREET

(Field Gates will open
at 11:30 am)

FIELD EXERCISES: 12:30 PM LUVERNE PUBLIC SCHOOLS

12:25 pm National Anthem by Luverne High School Marching Band

YOU BE THE JUDGE!

FIELD ORDER			MUSIC EXECUTION - Overall how well the band plays including: expression, balance, timing, tempos and etc...	MARCHING & MANEUVERING EXECUTION - Lined up straight, body posture, confidence, poise & discipline.	GENERAL EFFECT - MUSIC Artistry, spirit and emotion - difficulty of music & variety	MARCHING & MANEUVERING - Formation of designs & patterns - show of spirit & professionalism	PERCUSSION - EXECUTION & ANALYSIS using the same techniques, enhance the music overall - how difficult are the drum parts	COLOR GUARD - creativity & originality in routines, in sync, emotion throughout routine and body posture	YOUR SCORE	JUDGE'S SCORE
POSSIBLE SCORE			20	20	20	20	10	10	100	
12:30	WEST LYON	A								
12:45	SIBLEY-OCHEYEDAN	A								
1:00	LENNOX	AA								
1:15	PIPESTONE	AA								
1:30	MADISON	AA								
1:45	WEST CENTRAL	AA								
2:00 - 2:15 CLASS A-1 & A AWARD CEREMONY & JUDGES BREAK										
2:15	HARRISBURG	AAA								
2:30	BROOKINGS	AAA								
2:45	O'GORMAN	AAA								
3:00	SIOUX CITY EAST	AAAA								
3:15	BRANDON VALLEY	AAAA								
3:30	ROOSEVELT	AAAA								
3:45	LUVERNE	HOST								
4:00 CLASS AA, AAA & AAAA AWARDS CEREMONY										

THE JUDGES:

The TRI-STATE BAND JUDGES is a judging association founded by Tom Haugen. Mr. Haugen founded the association in 1985 to bring together band professionals to provide a comprehensive judging resource. This resource provides judging panels for parades, festivals, field shows and marching band clinics throughout the Midwest. This past year, the TRI-STATE BAND JUDGES have provided judging teams for over 100 events. Based out of Decorah, IA, the association draws from a pool of 28 highly qualified judges who are or have served as band directors and specialists in the marching band area. Today's judging team represents 150 years of judging experience!



HEAD JUDGE
TOM HAUGEN
Music Execution
Decorah, IA



Marching Execution
Music General Effect
Visual Effect
Color Guard/Band Front
Percussion

Dale Nelson
Jon Mattheis
Steve Citta
Lane Powell
Lee Krueger

Luverne, MN
Edgerton, MN
Cedar Falls, IA
Harmony, MN
Oronoco, MN



THE SPIRIT OF MADISON MARCHING BAND

DIRECTOR:

Tim Echart

ASSISTANT DIRECTORS:Brett Kroeger, Percussion
Liz Lynam, Color Guard**DRUM MAJORS:**Emily Dreeszen
Courtney O'Connell**SCHOOL ENROLLMENT:** 384**NUMBER IN BAND:** 80

FIELD MUSIC: "A Night at Prom" arranged by Tim Eckart and Brett Kroeger. A Night at Prom represents the musical soundtrack of the emotions and events of the typical high school prom. There is the fun of the dance, the disagreement, the argument, and the suspense of will the couples make through this ordeal or not.



.....

Check out our daily
**Lunch & Dinner
Specials**

.....

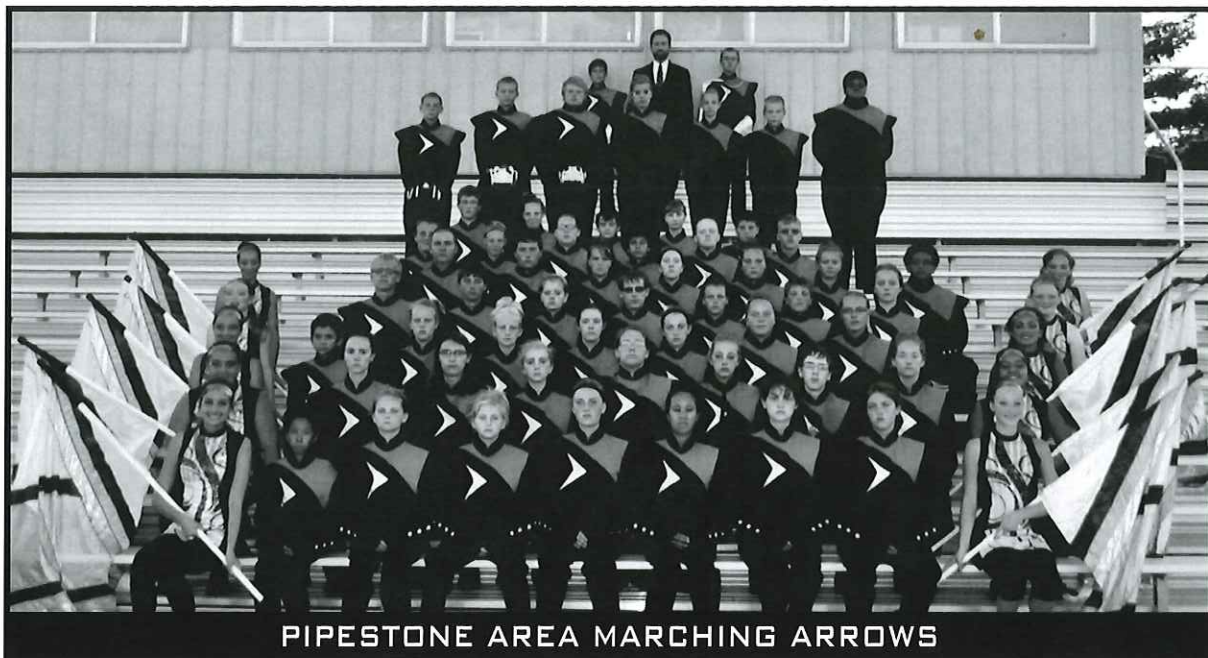
449-0454
909 S. Kniss

McClure Electric

Quality Service Since 1927

121 North Cedar, Luverne
Al Aanenson, owner

507-283-4716



PIPESTONE AREA MARCHING ARROWS

DIRECTOR:
Steve P. Olson

DRUM MAJORS:
Taylor Ference
Mason Reynolds

COLOR GUARD LEADERS:
Caylee Clipper
Erica Swenson

PERCUSSION LEADER:
Samantha Gervais

SOLOISTS:
Kirk Morgan, trumpet
Whitney Norberg, alto sax

ASSISTANT DIRECTORS:

Peggy Reynolds - Assistant Director
Spencer Kruse - Percussion Instructor, Wind Arrangements
Ellen Germain - Colorguard Instructor & Design
Monica Halbur - Assistant Colorguard Instructor & Design
Leon Sieve - Colorguard Design
Shane Macklin - Drill Design
Zach Ploeger - Visual Instructor
Zach Norber - Visual Technician
Ethan Ploeger - Visual Consultant & Designer
Marques Eckhoff - Percussion Arrangements

MUSICAL SELECTION:

PARADE MUSIC: "A Matter of Red, White and Blue" and arranged by David Samuel. A medley of patriotic music including: Yankee Doodle; Columbia, the Gem of the Ocean; National Emblem and You're a Grand Old Flag

FIELD MUSIC: "Clockwork"

I. Time Crawls Coldplay/Chopin/arranged by Spencer Kruse
II. The Hours (Time Flies) Philip Glass/arranged by Spencer Kruse
III. Got The Time Arranged by Spencer Kruse/Marques Eckhoff
IV. So Much To Do, So Little Time

AWARDS AND ACCOMPLISHMENTS: The Arrows have earned hundreds of trophies in the last 20 years, competing in festivals in Minnesota, South Dakota, Iowa, Nebraska, and other nearby states. The Marching Arrows also travel extensively, having performed in Washington D.C., Florida, the Tournament of Roses Parade in California, the Macy's Thanksgiving Day Parade in New York City, and the Portland Rose Festival in Portland, Oregon. In June of 2014, the Marching Arrows traveled to Boston and New York City. The Arrows marched in two 4th of July parades including the Randolph, MA parade and the Bristol, RI parade.

2013 AWARDS/ACKNOWLEDGEMENTS:

Waseca Marching Classic — Waseca, MN 2nd Place—Class AA Parade Competition
2nd Place—Class AA Field Competition
Tri-State Marching Festival—Luverne, MN 2nd Place—Class AA Parade Competition
2nd Place—Class AA Field Competition
Big Sioux Review—Brandon, SD 1st Place—Class A Field Competition
Class A Best Drum Majors Class A Best Winds
Festival of Bands—Sioux Falls, SD 3rd Place—Class AA Field Competition
Youth In Music Marching Championships— Minneapolis, MN: 3rd Place – Class AA Field
Quad-State—Vermillion, Sd: 2nd Place Class AA Field

SCHOOL ENROLLMENT: 318
NUMBER IN BAND: 63

The
Bluestem
CASUAL • FRESH • LOCAL

1202 S. Kniss Ave.

507-449-2583

www.the-bluestem.com



Luverne Flowers

Full service florist with greenhouses on site

507-283-4451 

Kevin & Kathy Jacobsma, Owners
811 W Warren • Luverne, MN

Luverne Landscaping, L.L.C.

Professional Landscape Design,
Installation & Maintenance

507-283-4220





STEWARTVILLE HIGH SCHOOL MARCHING TIGERS

DIRECTOR:
Jessica Honsey

DRUM MAJORS:
Hosanna Biffert
Lacey Ratajczyk

COLOR GUARD CAPTAIN:
Co-Captains: Callie Severson
Gabrielle Espinosa

**PERCUSSION
LEADERS:**
Captain Danika Dahle

SCHOOL ENROLLMENT: 530
NUMBER IN BAND: 72

PARADE MUSIC:

"Incantation: by Benoit Jutras and arranged by Jay Dawson. Exotic mid-Eastern flavor infuses this high energy song from "Cirque du Soleil: Quidam" featuring the percussion section, vocals for the wind section and a final fanfare statement! This is a dynamic and unique performance for the street!

AWARDS & ACCOMPLISHMENTS:

Have competed at the Waseca Marching Classic since 2001, Luverne Tri-State Band Festival in 2004 (consistently since 2008), and the Sioux Falls Festival of Bands since 2006.

The band program also received numerous awards at the Fiesta-val music festival in Williamsburg, VA in 2008 including outstanding soloist and 1st place for Parade and Concert Band performances. The band has also travelled to and performed in Chicago in April of 2011, and performed at Disney in March of 2014.



bp

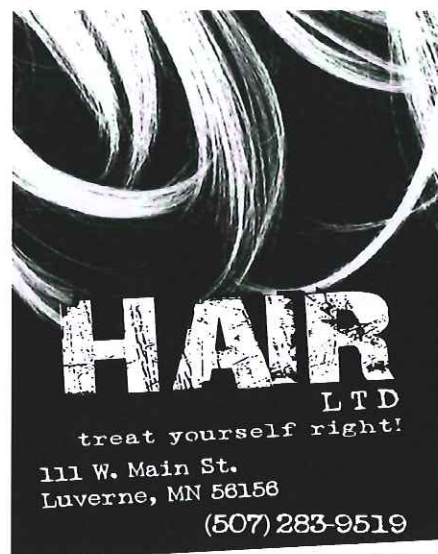


ExpressWay – Luverne
1002 S. Kniss Ave
Luverne, MN 56156
507-283-3942

bp



**Proud Supporters of
area Band Participants!**



**GOOD LUCK TO ALL
BAND PARTICIPANTS!**

Find us on Facebook
search: **HAIR LTD**



TEA TITANS MARCHING BAND

DIRECTOR:
Stephanie Wranek

ASSISTANT DIRECTORS:
Mary Beth Sutton, Assistant Director
Bob Goheen, Percussion
Tasha Weber, Flags

SCHOOL ENROLLMENT: 375
NUMBER OF BAND MEMBERS: 81

PARADE MUSIC:
"Jai Ho". Arranged by Michael Brown and percussion by Will Rapp. From the movie "Slumdog Millionaire"

AWARDS AND ACCOMPLISHMENTS
This is the first year of competitive parade marching for Tea High School at Tri-State Band Festival.

We still make house calls



There are many advantages to having a local insurance agency. We know our customer, and will work with you to protect what matters most.

Call our office today for a quote and discover our Policy of Working Together®.

FARMUTUAL
Insurance.

Kozlowski

Insurance Agency & Financial Services, Inc.

626 South highway 75, Luverne • (507) 283-3704 or (877) 631-3704
Pipestone - (888) 825-3366
www.kozlowski-insurance.com

THE MOLLY TROLLEY

330 W Warren St, Luverne, MN • 507-283-4053



LUVERNE TROLLEY LLC called Molly the Trolley offers personalized interstate and intrastate transportation services based out of Luverne, MN

Our 14-passenger enclosed vehicle is available any time of day for charter tours, trips and shuttle services.

The trolley features interior and exterior sound systems, microphone, temperature control ride and food & beverage storage.

- Historical Tours
- Custom Shuttle Service
- Weddings and Parties
- Business & Group Travel
- Sober Cab Services

Larry Lanphere **MANAGER**
Cell: 507 920-0332
E-mail: llanphere@knology.net



DIRECTOR:
Mr. Danny Eye

COLOR GUARD LEADER:
Hailey Johnson
Aurora Goetsch

DRUM MAJORS:
Dean Knuth
Melissa Wollman
Taylor Lewin

PERCUSSION LEADER:
Madelyn Miller
Hanna Wahl
Ryan Hoag

SOLOISTS:
Nathan Saygili - Parade
Jared Blume - Parade
Eli McMahon - Field
Nathan Saygili - Field

ASSISTANT DIRECTORS:
Amanda Beck, Colorguard Instructor
Joe Cataneo, Colorguard Choreography
Shane Macklin, Drill
Nick Shumaker, Battery Percussion
Isaac McMahon, Marching Technician
Courtney Andersen, Marching Technician

MUSICAL SELECTION:

PARADE MUSIC: "Carambola" by Victor Lopez – Spanish style
FIELD MUSIC: "Red"

AWARDS AND ACCOMPLISHMENTS:

King Turkey Days Parade – 1st Place Parade,
Outstanding Winds, Outstanding Colorguard,
Outstanding Drumline, Outstanding Drum
Majors, People's Choice.
Tri-State Band Festival – 1st Place Parade,
3rd Place Field;
Big Sioux Review – 2nd Place Field,
Outstanding Colorguard;
Festival of Bands – 3rd Place Parade Class,
People's Choice Award

SCHOOL ENROLLMENT: 370
BAND MEMBERS: 75

The Area's Best and Newest Hotel!

GrandStay Hotel & Suites of Luverne, MN




GRANDSTAY.
HOTEL & SUITES

Amenities at Grandstay

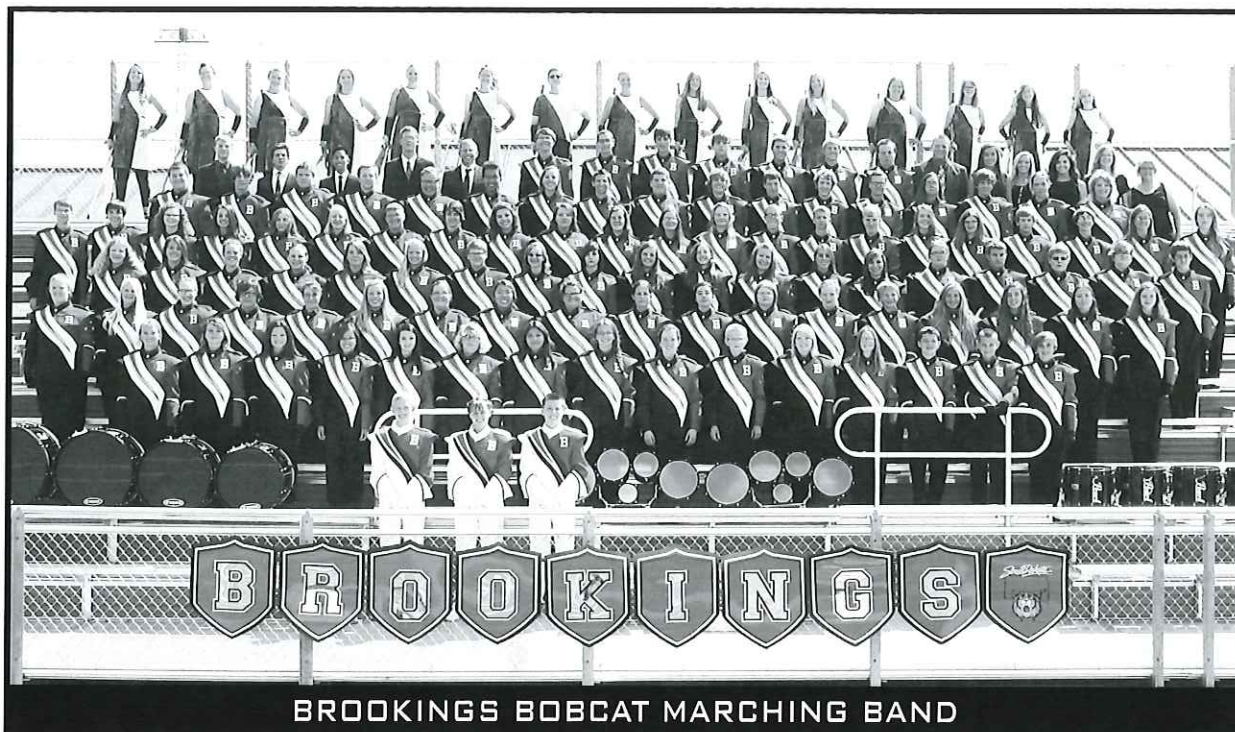
- Complimentary Gourmet Express Breakfast™
- Microwaves and Fridges in All Rooms
- Free Wireless and Wired Internet
- Large Flat-panel TV with Cable
- Spacious Indoor Pool
- On-site Guest Laundry
- Walking Distance to Restaurants

Nightly • Weekly • Monthly

908 South Kniss Avenue | Luverne, MN 56156

507.449.4949

www.GrandStayLuverne.com



DIRECTOR:
Ron Stary

DRUM MAJORS:
Ellie Koerner
Cole McDougall
Alex Barthel

COLORGUARD:
Katie Kindvall

PERCUSSION LEADERS:
Nick Fox
Taylor Mileham
Madelynn Hotchkiss

WIND SOLOISTS:
Tess Owens
Isabel Kees
Bridgette Ramlo
Lucas Abraham
Esther Schagim
Conor Lanning

ASSISTANT DIRECTORS:

Jeremy Hegg, Music Writer & Arranger
Kevin Carlson, Drill Design
Jeff Wroblewski, Color Guard Choreographer
Nick French, Percussion Instructor
Dr. Aaron Ragsdale, Percussion Arranger
David Schuman, Percussion Instructor
Laura Steinstra, Color Guard Instructor
Kevin Kurtz, Percussion Tech
Holly Horst, Color Guard Instructor
Jackie Meyer, Visual tech
Kaylie Timm, Rifle tech
Preston Parker, Sound Tech
Kelsey Marker, Visual Instructor
Seth Bradley, Sound Tech
Collin Ottson, Visual Instructor

SCHOOL ENROLLMENT: 890
NUMBER IN BAND: 120

PARADE MUSIC:

John Phillip Sousa, Washington Post and Semper Fidelis March by and National Emblem March, arranged by Ron Stary, drum book by Dr. Aaron Ragsdale

FIELD MUSIC: "The Sky's the Limit" a story of the trials, tribulations and eventual triumph of reaching for your potential in three movements; "Skyrise", "Skyfall", & "Sky Awakes" based on Irving Berlin's "Blue Skies", the Theme from "Apollo 13" by James Horner, "Skyfall" by Adele and "Aurora Awakes" by contemporary composer John Mackay. Original music & Score Arrangements by Jeremy Hegg. Drill Design by Kevin Carlson, Percussion Book by Dr. Aaron Ragsdale, Show Concept by Ron Stary. Color Guard Design & Choreography by Jeff Wroblewski.

AWARDS AND ACCOMPLISHMENTS:

Minnesota State Fair Parade, Marshall, Minnesota – Pursuit of Excellence, Luverne Minnesota Tri-State Band Festival, Brandon Valley Big Sioux Review, Arlington East Central Parade, Sioux Falls Festival of Bands, Dutchmen Field Competition-Orange City-Iowa, Omaha Nebraska Invitational Marching Competition, SDSU-Brookings Hobo Days Parade.



*For All
Your
Building
Needs*

507-283-9151

**OPEN Monday thru Friday 7:30 a.m. to 5:30 p.m.
Saturday 8:00 a.m. to 12 noon**



**Screenprinting • Embroidery
Ad Specialties**

**207 E. Main
Luverne, MN
(507) 283-1770
Toll Free 888-283-1770**



**Fast, Friendly
Service**

www.luvprintexpress.com



HARRISBURG HIGH SCHOOL MARCHING BAND

DIRECTOR:

Jason Groon

ASSISTANT DIRECTORS:Tim Stockman, Assistant Director
Elizabeth Martinez, Colorguard Instructor**SOLOISTS**Ben Aasheim, Trumpet
Paige Schnetter, Guard**DRUM MAJORS**Cole Hanselman
Sylvia Larson**MUSICAL SELECTION:****FIELD MUSIC:**

"Layrinth" arranged by Key Poulan. In ancient mythology, the Labyrinth was a complex maze designed by Daedalus and built by King Minos of Crete to contain the Minotaur, a half-man, half-bull creature that was killed by the Athenian Theseus. Utilizing a metaphoric interpretation of the Labyrinth, the journey into through and the emergence symbolizes personal reflection of one's life.

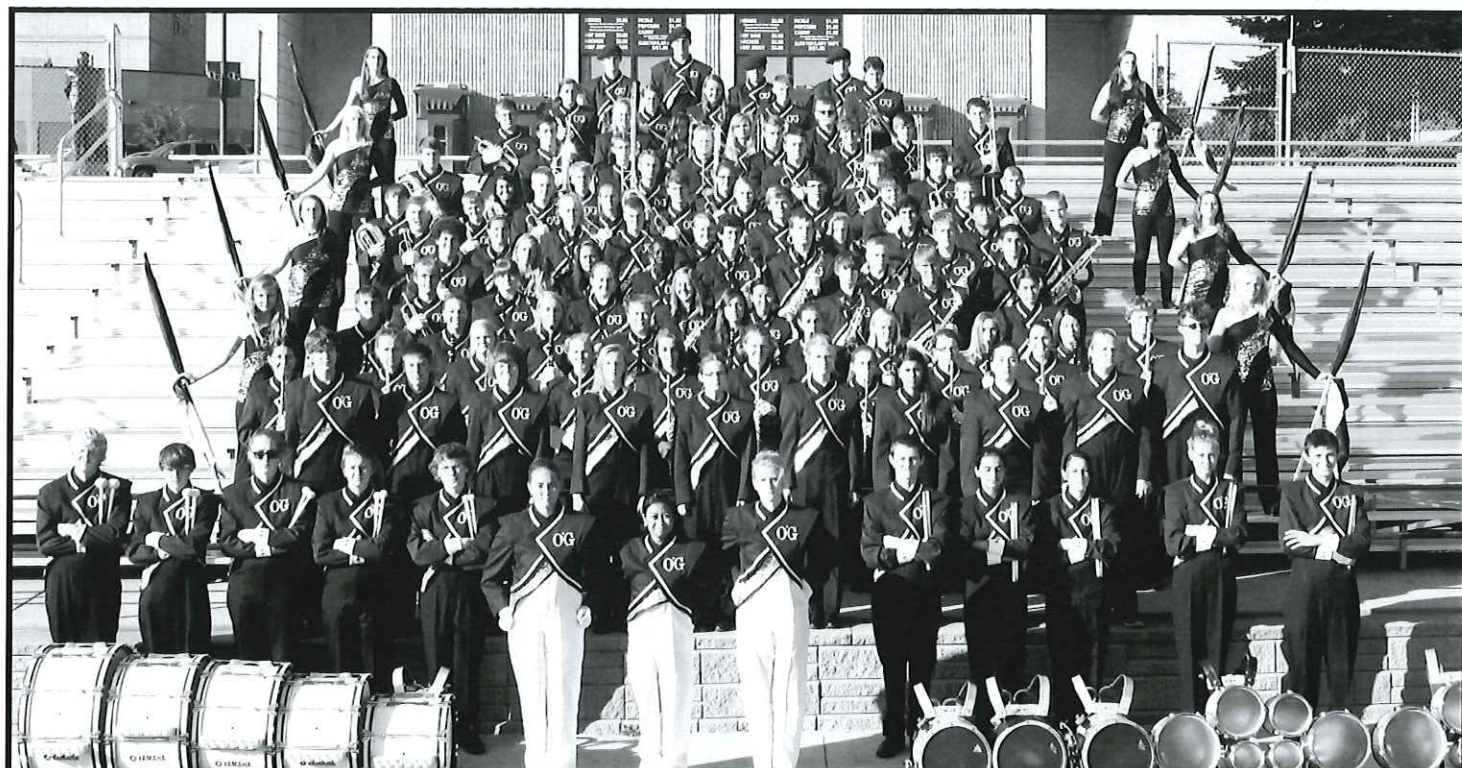
AWARDS AND ACCOMPLISHMENTS:

This is the first year of competitive field marching for Harrisburg. Along with the Big Sioux Review, the Harrisburg Marching Band is performing in the Pursuit of Excellence in Marshall, MN, the Tri-State Band Festival in Luverne, MN, the Dutchmen Field Championship in Orange City, IA, and the Quad State Marching Competition in Vermillion, SD.

SCHOOL ENROLLMENT: 700**BAND MEMBERS:** 50**Al's Upholstery****"We got you covered"**
Since 1981**Al Lais**Phone: 507-283-8835
E-mail: bigal@knology.net112 W. Crawford
Luverne, MN 56156**Meulebroeck, Taubert & Co., PLLP**Certified Public Accountants
109 S. Freeman • Luverne, MN 56156
507.283.4055**Experienced tax preparers with offices in
Pipestone, Luverne, Russell, Tyler & Lake Wilson**

- Tax planning and preparation
- Electronic tax filing
- Agri-Plan™ pretax medical deductions
- Accounting and bookkeeping services
- Payroll services
- Quickbooks setup & assistance

**Dave Friedrichsen, Krista Kroon,
Daryl Kanthak, Amy Mollberg, Cayla Hamm,
Phyllis Vos, Janet Slieter & Lois Mulder**



O'GORMAN MARCHING KNIGHTS

DIRECTOR:

Ben Koch

DRUM MAJORS

Andrea Veloira
Desiree Mercer
Erin Claussen

PERCUSSION LEADERS

Mira Yousef – battery
Destinee Mercer, front ensemble
Trudy Jones, front ensemble

COLOR GUARD LEADERS

Kelsey Renczykowski
Elizabeth Schlenker

ASSISTANT DIRECTORS:

Heather Nelson, Chris Haak
Meredith Molseed, Colorguard Coach
Julie Fettes, Colorguard Choreographer
Dan Carlson, Drill Designer
Eric Rath, Arranger

SOLOISTS

Ben Merritt, trumpet
Katie Drummond, trumpet
Nathaniel Pekas, mellophone
Bailey Lauret, mellophone
Alyssa Rokusek, clarinet
Maggie Eckerstorfer, alto sax
Kylie Schmidt, alto sax
Michael Sulaiman, tenor sax
Michael Leon, baritone sax

MUSICAL SELECTION:**FIELD MUSIC:**

"Rhapsodies" by Eric Rath features selections from George Gershwin's *Rhapsody in Blue* and Queen's *Bohemian Rhapsody*.

SCHOOL ENROLLMENT: 700**BAND MEMBERS:** 126**AWARDS AND ACCOMPLISHMENTS:**

The O'Gorman Marching Knights have been awarded many times in the past for their excellence in performance. In 2012 they were the Overall Grand Champions at the Quad-State Marching Festival at the University of South Dakota, and in 2013 they won the Sweepstakes Award at the River City Band Festival. This year the band will travel to competitions in Marshall and Luverne, Minnesota, Brandon and Vermillion, South Dakota, and Orange City, Iowa.

**(507) 227-2183****SchomackerClean.com****126 West Main Street ~ Luverne**

Blue Mound
Auto Glass

Brian Boll
Owner

1481 Rowe Drive
Luverne, MN 56156
Phone: 507.920.7051
Fax: 507.283.8379
bluemoundautoglass@gmail.com



"SPIRIT OF WORTHINGTON" TROJAN MARCHING BAND

DIRECTOR:	DRUM MAJORS:	COLOR GUARD LEADERS:	PERCUSSION LEADER:	SCHOOL ENROLLMENT: 763
Jon Loy	Brianna Kempema	Annie Lesnear	Ashby Hoefker	BAND MEMBERS: 160
	Troy Feller	Katherine Luke	Alicia Darling	
	Orissa Nitibhon	Jessica Arnt		
	Quinn Bents	Lauren Marting		

ASSISTANT DIRECTORS:

Jon Wendt, Assistant Director
 Joe Cataneo, Heather Loy and Anna Tims, colorguard
 Deann Naab, Matt Tims, Bryan Mauerer, Drumline
 Zach Brandt, Claree Bents, Frontline; Brent Turner, Visual Caption Head
 Judie Johnson, Pam Wendland, Bernie Brandt, Props Design
 Lisa Schutte, Kathy Lesnar, Historians
 Lisa Brandt, Head Chaperone.

PARADE MUSIC: "Les Miserables", the music of Claude-Michel Schönberg and arranged by Jeremy Hegg with percussion book by Matt Tims.

1. Look Down
2. At the End of the Day
3. Castle on a Cloud
4. One Day More

AWARDS AND ACCOMPLISHMENTS:

1st Place Parade - Open Class and Parade Grand Champions at Algona, IA Band Day; 1st Place Parade - Class 3A, Outstanding Colorguard, Drum Majors and Parade Grand Champions at Lake Area Festival of Bands - Chester, SD;
 2nd Place Parade - Class 3A, People's Choice and Herb Streitz Spirit Awards at Waseca Marching Classic - Waseca, MN;
 2nd Place Parade - Class 3A at Tri-State Band Festival - Luverne, MN;
 2nd Place Parade - Class 2A, People's Choice Award at Battle of the Bands - Lake Crystal, MN;
 1st Place Parade - Open Class at Wood Duck Festival - Fulda, MN;
 1st Place Parade - Class 1A, Outstanding Colorguard, Drumline, Winds, Drum Majors and Parade Grand Champions at Anoka Halloween Parade - Anoka, MN;
 Host Band - King Turkey Day Parade, Worthington, MN.



McClure
 PLUMBING, HEATING, AIR CONDITIONING, INC.

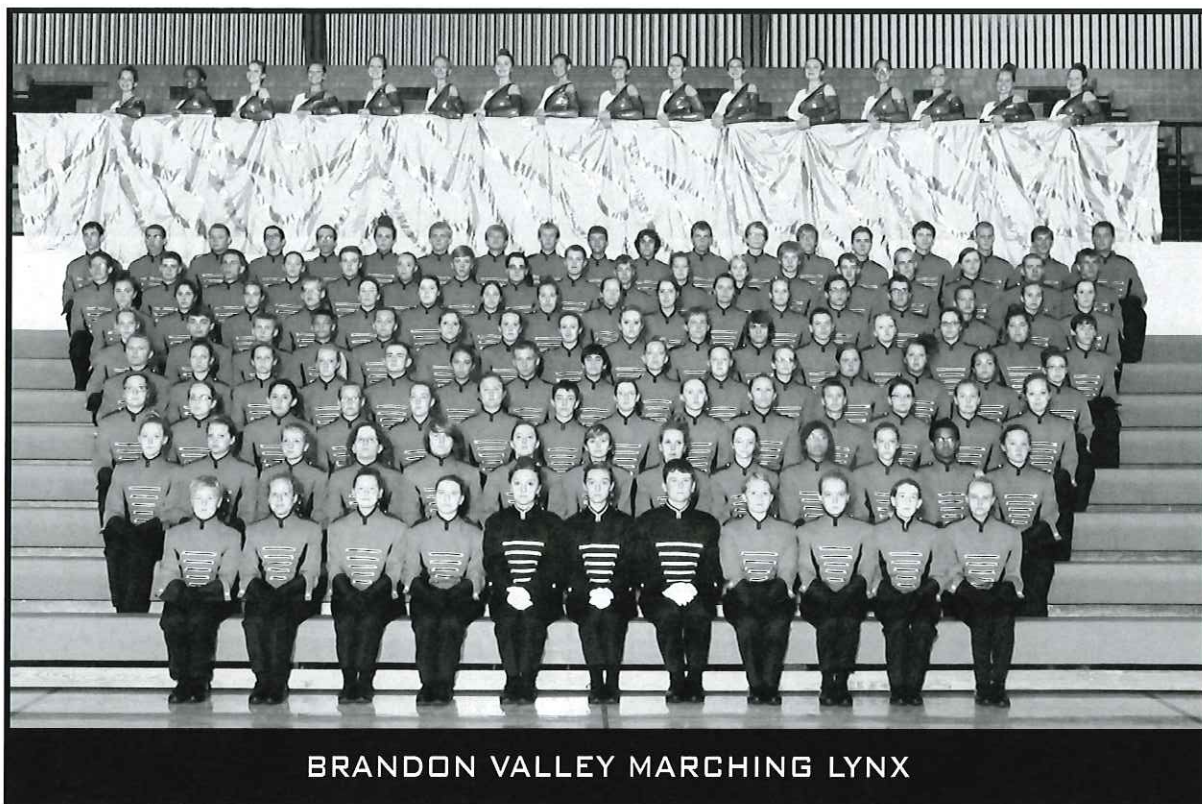
**412 South Kniss
 Luverne, MN
 507-449-2828**

FIGHT FIRE WITH FIRE



New Trucks • Service • ISO Pump Certification • Parts

MidwestFire.com • General Inquiries: mwf@iw.net
 Toll Free: 1.800.344.2059 • Fax: 507.283.9142



BRANDON VALLEY MARCHING LYNX

DIRECTOR:
Jesse Miller

DRUM MAJORS:
Kjerstin Williams
Joel Kocer
Summer Rogers

COLOR GUARD LEADERS:
Megan Swets

PERCUSSION LEADERS:
Tonner Bowman
Tate Green

SOLOISTS:
Chelsey Schmeling, Trumpet
Ginger Wardlow, Guard Soloist
Megan Swets, Guard Soloist

AWARDS AND ACCOMPLISHMENTS:

In 2013, the band placed first on the field and in parade in their class and was the overall sweepstakes champion at the Waseca Marching Classic, First place in their class on the field and in parade at the Tri-State Band Festival in addition to outstanding winds, percussion and drum majors, and the band was a finalist at the Festival of Bands Competition in Sioux Falls, SD. The Marching Lynx closed their 2013 season taking first place, best horn line, best colorguard, best percussion, and best conductors at the USD Quad State Marching Band Competition. 2014 appearances for the Marching Lynx will include The Pursuit of Excellence, The Tri-State Band Festival, The Big Sioux Review, The Festival of Bands, The Dutchmen Field Championship, and The Mid-Iowa Band Championship in Ankeny, IA.

SCHOOL ENROLLMENT: 1,006

BAND MEMBERS: 144

MUSICAL SELECTION:

PARADE MUSIC: "Jupiter" by Gustav Holst

FIELD MUSIC:

"Second Star to the Right and Straight on 'Til Morning"

- 1.) Part 1
- 2.) Part 2
- 3.) Part 3
- 4.) Part 4

ASSISTANT DIRECTORS:

Anne Chambers, Laura Baker - Assistant Directors
Shane Macklin, Kasey Wahl - Visual Designer
T. Andre Feagin - Wind Composer/arranger
Dave Hall - Percussion Writer
Kate Chambers, Kristyne Walth, Megan Swets - Guard Choreographer
Melanie Sittig, Kristyne Walth, Kate Chambers - Colorguard
Kasey Wahl - Visual Staff
Steven Versaevell, Jared Goede, Jessica Goede - Percussion

Family Restaurant

920 S Kniss Ave, Luverne, MN 56156

Prime Rib
Saturday 5pm until gone

Ribeye
Anytime

WITH

Soup & Salad Bar

Real Estate Retrievers

Home is where your story begins.

Keith 507-920-6131 Deb 507-920-9921
Gene 507-920-9920

www.realestateretrievers.com

Luverne, MN
507-283-4216

Hills, MN
507-962-3433



ROOSEVELT ROUGH RIDER MARCHING BAND

DIRECTOR:
Michael Hench

DRUM MAJORS:
Aaron Musser
Isaac Westerguard

**COLOR GUARD
LEADERS:**
Rebecca Susemihl

**PERCUSSION
LEADERS:**
Emily Wagner
Neil Leyda
Katie Wheaton

SOLOISTS:
Eric Sanchez, Horn

SCHOOL ENROLLMENT: 2,100
NUMBER IN BAND: 94

ASSISTANT DIRECTORS:
Cassandra Bechard, Assistant
Director

Kris Moe, Visual
Jill Hanson, Guard
Spencer Kruse, Jake Mahowald,
Alex Kischer, Percussion
Sarah Schmidt, Woodwinds
Andrew Klinger, Brass

MUSICAL SELECTION:
FIELD MUSIC:

"In My Life" is arranged by Stan Phillips and is based on the photography of Vivian Meyer. Vivian was an unknown street photographer who did most of her work in Chicago and New York in the 50s and 60s. After Vivian died in 2010 her work was discovered and has become world famous. Vivian's photographs are stark images of real life and catch moments of people's lives in the most unassuming way.

AWARDS & ACCOMPLISHMENTS:

In 2013 the Roosevelt High School Marching Band had a very successful season. The Rough Riders finished 1st in their class at the Pursuit of Excellence in Marshall, MN and Grand Champion at the Tri-State Band Festival, Big Sioux Review and Pride of the Dutchmen Festivals. This year the Roosevelt Band will participate in five regional competitions and the Bands of America Super Regional in St. Louis, MO.



2014
Premier
Store

sears
HOMETOWN STORE

JEFF COOK
STORE OWNER

507-283-8786
500 E. Main Street
Luverne, MN 56156
ds3790@shos.com

<https://www.facebook.com/SearsHTSLuverneMN>

State Farm Insurance Companies



Home Offices: Bloomington, Illinois
Pat Foerster, CLU

Agent

24 Hour Good Neighbor Service®

122 E. Main, Luverne • 507-283-4401



SIOUX CITY BLACK RAIDER MARCHING BAND

DIRECTOR:

Jeff Soukup
Brad Anderson

ASSISTANT DIRECTORS:

Paul McEntaffer - Marching/Music
Angela Ericson - Guard
Kiley Coyne - Choreography
Shane Macklin - Drill
Ron Smith - Percussion
Nick Osmonson - Marching Tech

DRUM MAJORS:

Hannah Ehmcke
Mitch Polley
Emily Fuentes

SOLOISTS:

Heidi Uhl, flute
Paige Susie, trumpet
Tyler Helton, sax

MUSICAL SELECTION:

FIELD MUSIC: "Live Life" arranged by Craig Fitzpatrick

SCHOOL ENROLLMENT: 1,325

BAND MEMBERS: 108

AWARDS & ACCOMPLISHMENTS: The Black Raider Marching Band consistently receives superior ratings at the Iowa State High School Marching Contest and placed 5th overall out of 25 bands at The 2013 Dutchmen Field Championships in Orange City. Last year the Black Raider Band took 1st place in 4A with outstanding drum majors, and outstanding percussion awards at the Quad State Marching Invitational in Vermillion.

This year the band is performing at The Wildcat classic in Bellevue, Big Sioux Review and Tri-State Marching Invitational, Festival of Bands, Quad State Invitational and the Waukee Marching Invitational.



Welcome to the

**Tri-State
Band Festival!**

Full Service Repairs

STROEH'S AUTO CENTER

321 East Main Street • Luverne, MN

507-283-4226



Junior's and Women's Clothing

118 West Main Street • Luverne, Minnesota 56156

Amy: 507.920.9115 • Tanna: 507.227.5620

Follow us on facebook tyanasboutique.com



BRANDENBURG GALLERY

INCLUDING 4 OF THE TOP 40
NATURE PHOTOGRAPHS OF ALL TIME
AS SELECTED BY THE INTERNATIONAL LEAGUE OF
CONSERVATION PHOTOGRAPHERS, SPRING 2010

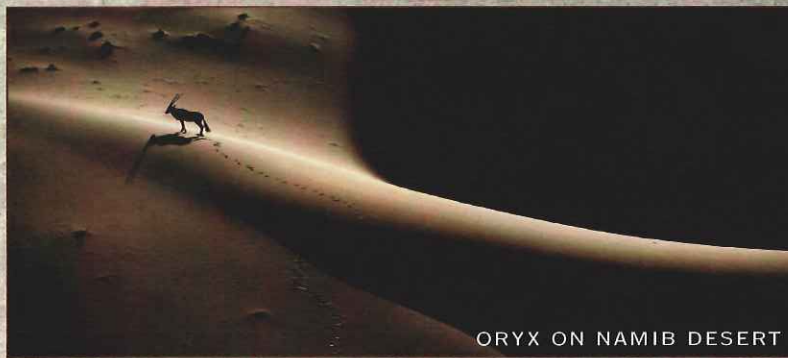
ROCK COUNTY VETERANS MEMORIAL BUILDING

ROCK COUNTY COURTHOUSE SQUARE

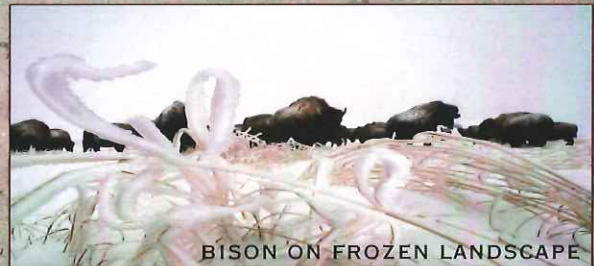
213 EAST LUVERNE STREET | LUVERNE, MN | 507-283-1884

WWW.JIMBRANDENBURG.COM | BRANDENBURGGALLERY@CO.ROCK.MN.US

M-F 8AM-5PM SAT 10AM-5PM



ORYX ON NAMIB DESERT



BISON ON FROZEN LANDSCAPE



GRAY WOLF

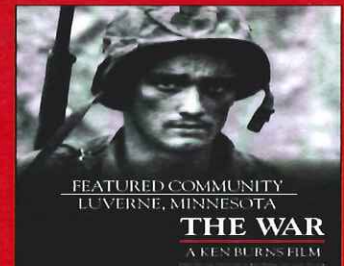


LEAPING ARCTIC WOLF

HERREID MILITARY MUSEUM



...telling the
stories of
service and
sacrifice of
soldiers from
the Civil War
through WWII



At the Rock County Courthouse Square

Rock County Veterans Memorial Building

213 East Luverne Street • Mon. - Fri. : 8 a.m. - 5 p.m. • Saturday: 10 a.m. - 5 p.m.



RESULTS FROM - TRI-STATE BAND FESTIVAL 2013

PARADE

CLASS A-1	Adrian High School, MN
CLASS A	Lennox High School, SD
CLASS AA	West Central HS, SD
CLASS AAA	Brandon Valley HS, SD

FIELD

CLASS A	Sibley-Ocheyedan HS, IA
CLASS AA	Madison HS, SD
CLASS AAA	Brandon Valley HS, SD
CLASS AAAA	Roosevelt HS, SD

KM Getman Award – Parkston High School, SD
Overall Sweepstakes – Brandon Valley High School, SD

CLASS A:

OUTSTANDING WIND - Sibley-Ocheyedan High School, IA
OUTSTANDING PERCUSSION - Lennox High School, SD
OUTSTANDING AUXILIARY - Parkston High School, SD
OUTSTANDING DRUM MAJOR - Sibley-Ocheyedan High School, IA

CLASS AA:

OUTSTANDING WIND - Madison High School, SD
OUTSTANDING PERCUSSION - Madison High School, SD
OUTSTANDING AUXILIARY - Madison High School, SD
OUTSTANDING DRUM MAJOR - Madison High School, SD

CLASS AAA:

OUTSTANDING WIND - Brookings High School, SD
OUTSTANDING PERCUSSION - Brandon Valley High School, SD
OUTSTANDING AUXILIARY - Brandon Valley High School, SD
OUTSTANDING DRUM MAJOR - Brookings High School, SD

CLASS AAAA:

OUTSTANDING WIND - Sioux Falls Roosevelt High School, SD
OUTSTANDING PERCUSSION - Sioux Falls Roosevelt High School, SD
OUTSTANDING AUXILIARY - Sioux Falls Roosevelt High School, SD
OUTSTANDING DRUM MAJOR - Sioux Falls Roosevelt High School, SD



WE OFFER:

Massage Therapy
Medical Laboratory Technician
Medical Assistant
Phlebotomy
Radiologic Technology
Surgical Technology
Liberal Arts Degree
Various online degrees

507.449.2772
311 N Spring St, Luverne, MN 56156
www.mnwest.edu



Packaging & Labels



Vehicle Graphics



Social Stationary



507-283-1716

116 W. Main Street - Luverne, MN
info@qualityprinting-luverne.com



YOUR FULL-SERVICE HOMETOWN PRINTER

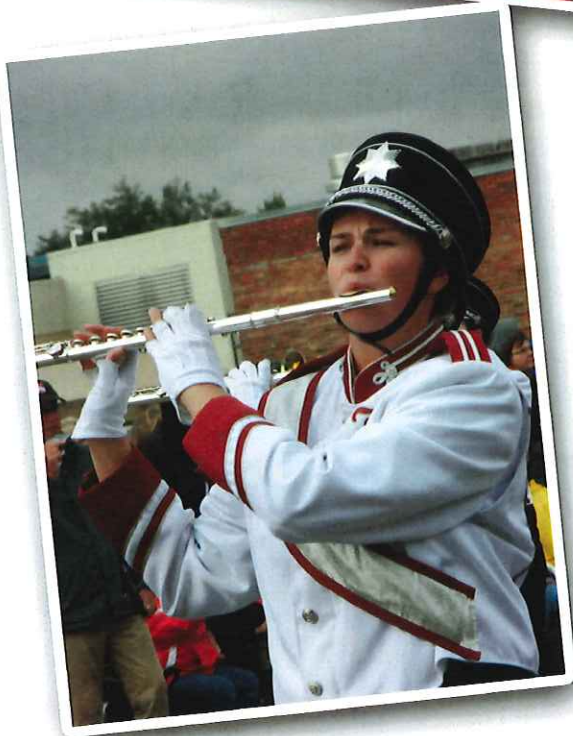
- Brochures
- Carbonless Forms
- Graduation Invitations
- Flyers
- Invoices
- Postcards
- Envelopes



Signs,
Banners,
& Vinyl
Lettering

GOOD LUCK TO ALL BAND PARTICIPANTS!







HEALTHY BANDS ARE WINNING BANDS

GOOD LUCK FROM THE PEPSI TEAM!



Proud Supporters of the Pipestone Marching Band

1809 Forman Drive, Pipestone, MN 56164

2014 Button Design Winner - CORA MUMME



The button design represents the creative spirit and energy of the 64th Annual Tri-State Band Festival. The button was designed by Luverne High School 2014 graduate –Cora Mumme.

Cora is the daughter of Mark and Beth Mumme (Hardwick). She participated in the button design contest held by the Tri-State Committee in partnership with Luverne Public Schools. Students enrolled in Fine Art classes taught by Chris Nowatzki and Graphic Design classes taught by Bill Thompson participate in the contest. Cora entry was submitted through her Graphic Design class. Her award-winning design was inspired by the innovative style of Andy Warhol.

Cora is attending Bethany Lutheran College in Mankato this fall with a major in either Studio Art or Graphic Design. She will also participate in both tennis and choir. Her future goals include doing mission work in a third world country before returning to the states to settle down with a husband, children, and an art career.

The Tri-State Band Festival Committee congratulates and applauds CORA MUMME in creating the **2014 TRI-STATE BAND FESTIVAL BUTTON!**





Proud to support participating bands

Sanford Luverne

- Clinic
- Medical Center
- Emergency Room

1600 N. Kniss Ave.
Luverne, MN 56156-1067
(507) 283-2321
sanfordluverne.org

SANFORD
Luverne

Powerful Features. Delivered.

MOBILE BANKING is here!

Three **POWERFUL** ways to deliver the ultimate on-demand service...



TEXT MESSAGING - Easily obtain balance or transaction information from any text enabled phone.

MOBILE BROWSER - Log in from any phone with Internet Access.

SMARTPHONE APP - Access your accounts via an app from any smartphone.

**LOG INTO INTERNET BANKING TO ENROLL OR
CONTACT TECH SUPPORT AT 866-733-3444 FOR DETAILS**



First Farmers & Merchants
We believe in you.TM
Member FDIC. And the community.

NATIONAL BANK

303 E. Main St. • Luverne, MN • 507-283-4463 • www.ffmbank.com

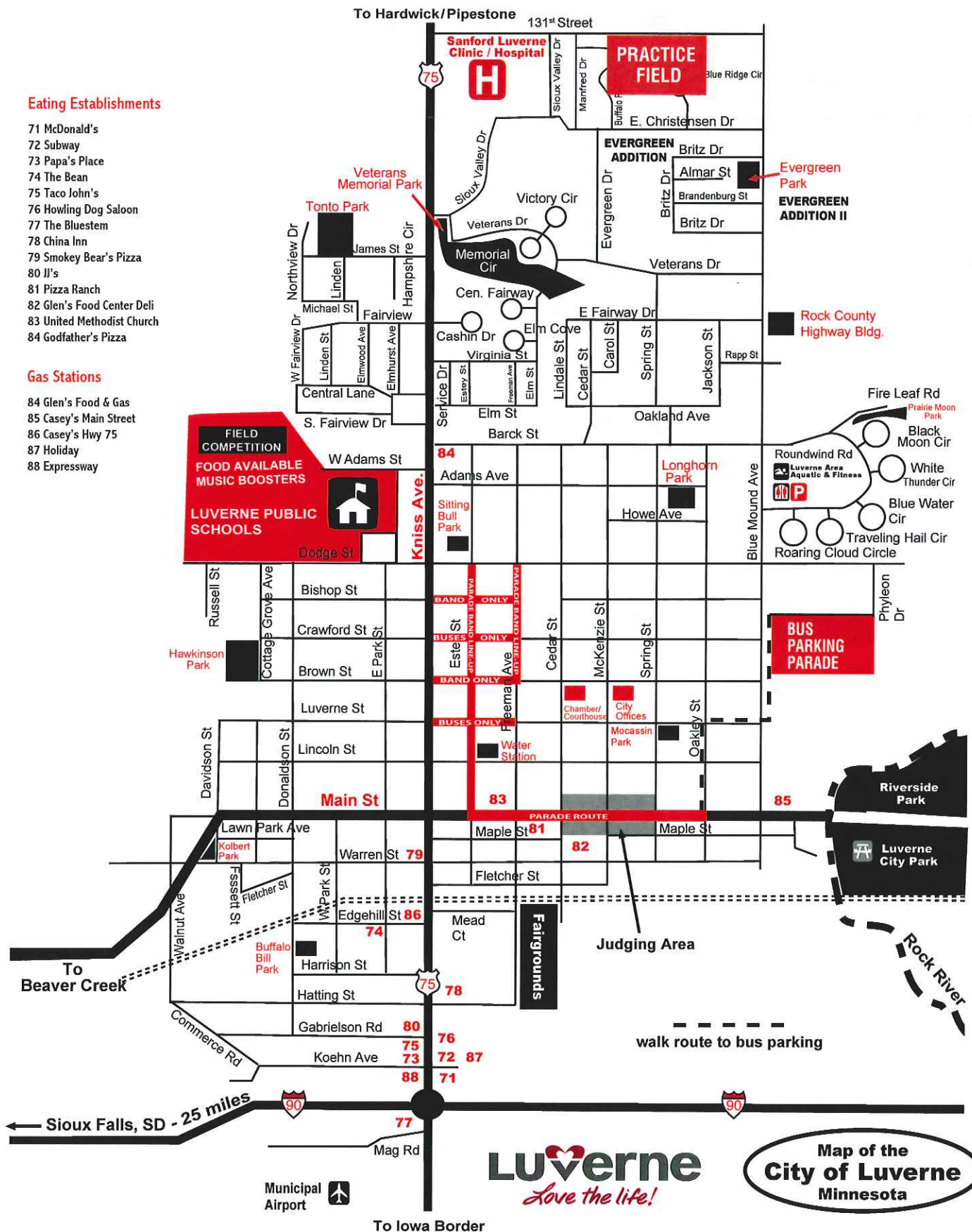


Eating Establishments

- 71 McDonald's
- 72 Subway
- 73 Papa's Place
- 74 The Bean
- 75 Taco John's
- 76 Howling Dog Saloon
- 77 The Bluestem
- 78 China Inn
- 79 Smokey Bear's Pizza
- 80 JJ's
- 81 Pizza Ranch
- 82 Glen's Food Center Deli
- 83 United Methodist Church
- 84 Godfather's Pizza

Gas Stations

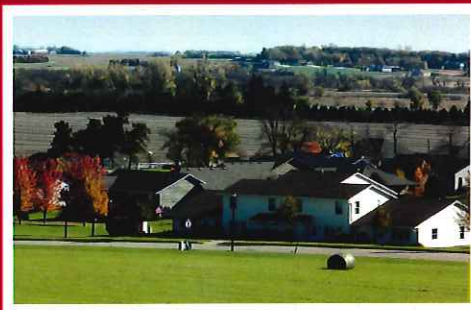
- 84 Glen's Food & Gas
- 85 Casey's Main Street
- 86 Casey's Hwy 75
- 87 Holiday
- 88 Expressway



Luverne
Love the life!

Map of the
City of Luverne
Minnesota

LOTS to Love



Build your new home on a beautiful lot in a charming city with a proud past and a promising future.

Come take a look at lots available from the Luverne Economic Development Authority **priced from \$5,000 to \$45,000 in five different subdivisions:**

- Sybesma Subdivision
- Veterans Addition
- Evergreen Addition
- Evergreen Second Addition
- Manfred Heights Addition

The community **boasts beautiful city parks**, an **outstanding public school system**, excellent healthcare resources and a wide variety of activities for people of all ages.

Luverne homeowners pay the **lowest property taxes** when compared to other county seat cities in southwest Minnesota, and a **Residential Lot Incentive Program** offers a \$2,500 credit per person* on the price of a lot.

There's a reason more than 4,500 are proud to call Luverne home. In Luverne, you'll love the life!

Maps and pricing at www.cityofluverne.org under Community Information.

Luverne
MINNESOTA
Love the life!

FOR MORE INFORMATION:

Holly J. Sammons

Economic Development Director
City of Luverne

P 507.449.5033

hsammons@cityofluverne.org

www.cityofluverne.com

*Some restrictions apply.

Papik

MOTORS

I-90 Luverne, MN

507-283-9171
800-634-7701



Enjoy the Flags Honoring America

Display brought to you by Papik Motors

www.papik.com
facebook.com/papik.com



GMC

